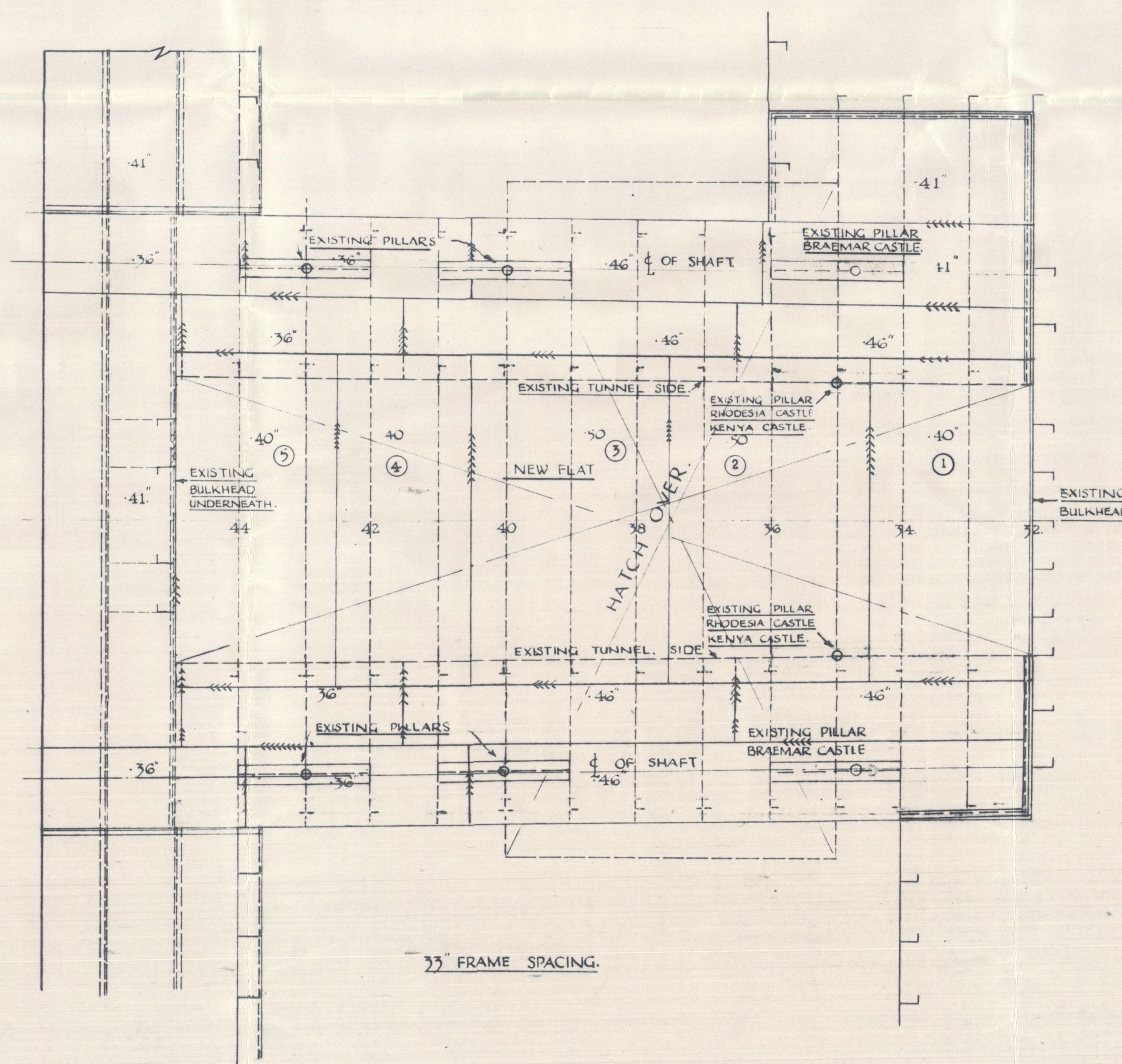
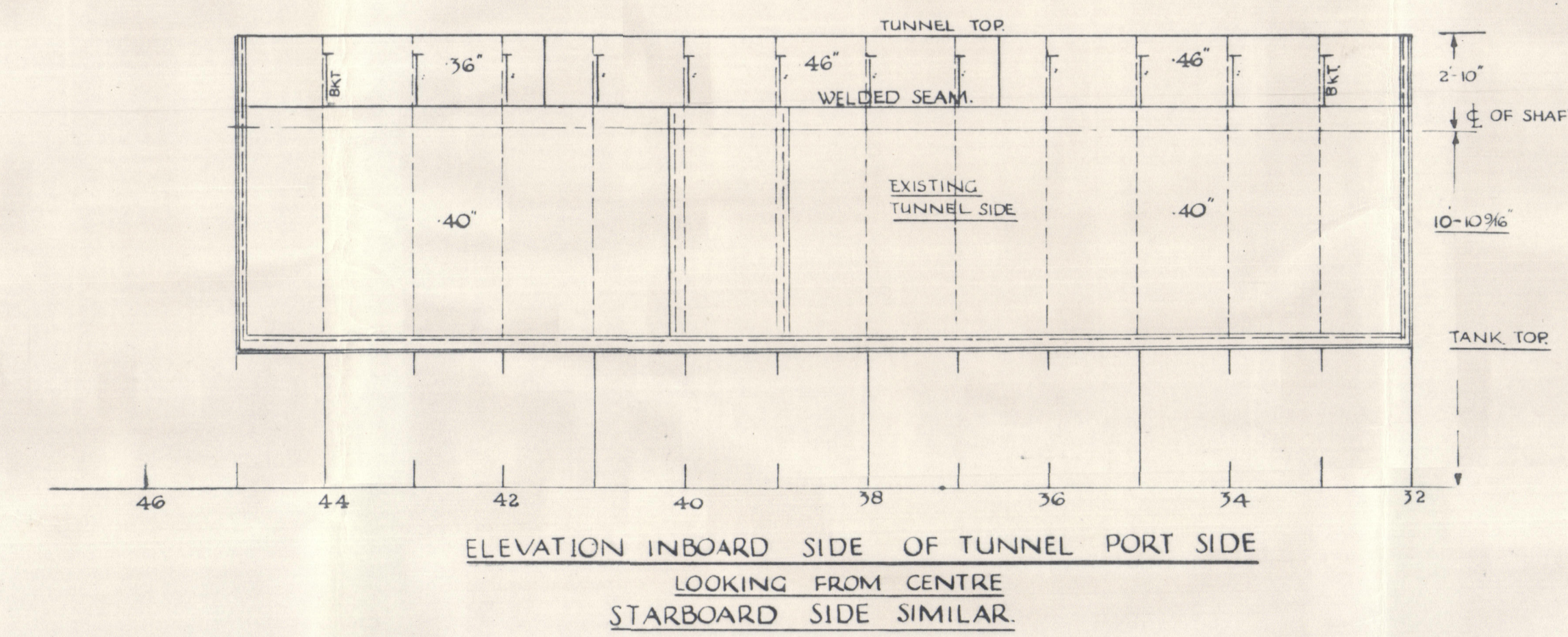


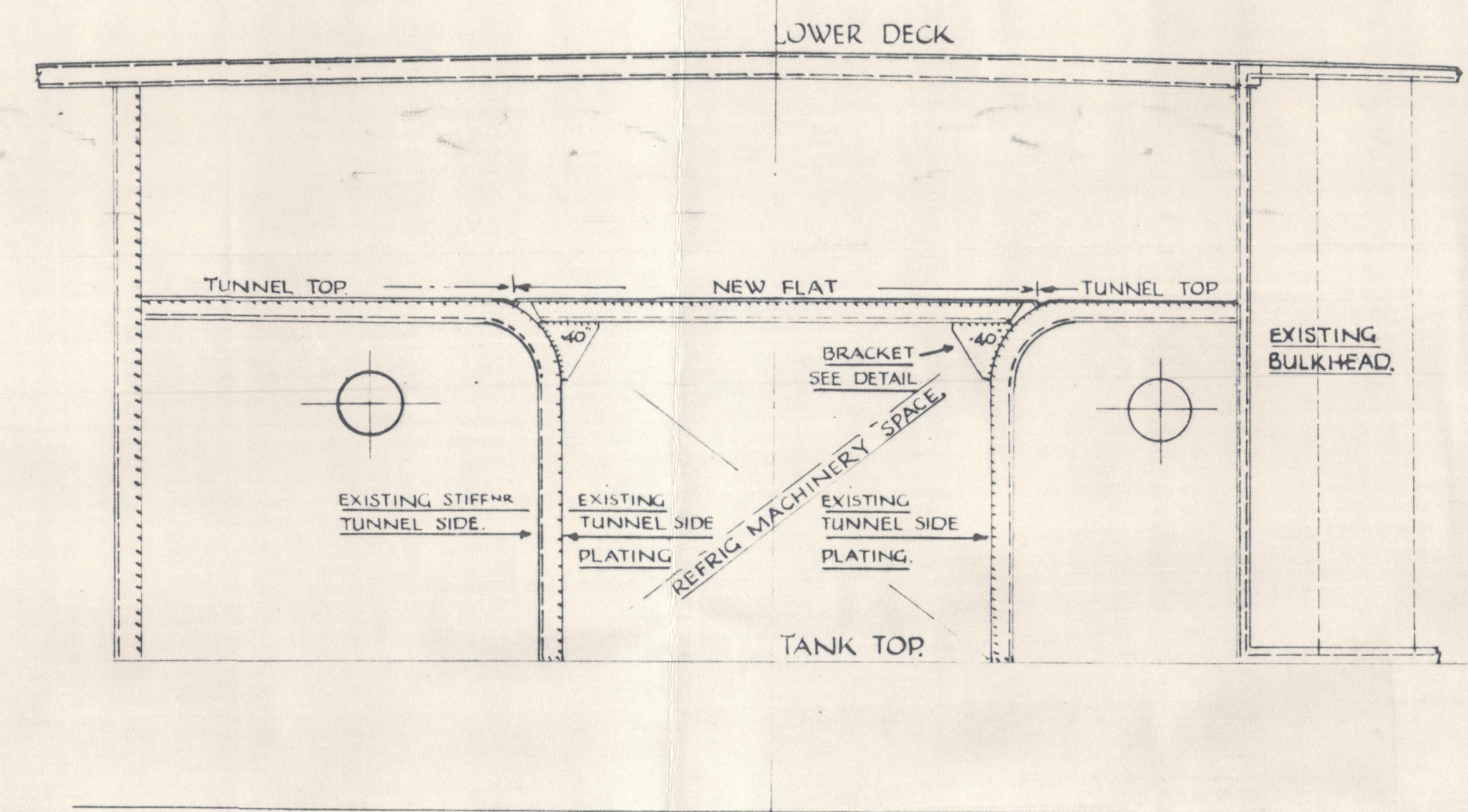
"RHODESIA CASTLE" "KENYA CASTLE" "BRAEMAR CASTLE"

NEW FLAT IN TUNNEL FOR REFRIG ~ MACHINERY

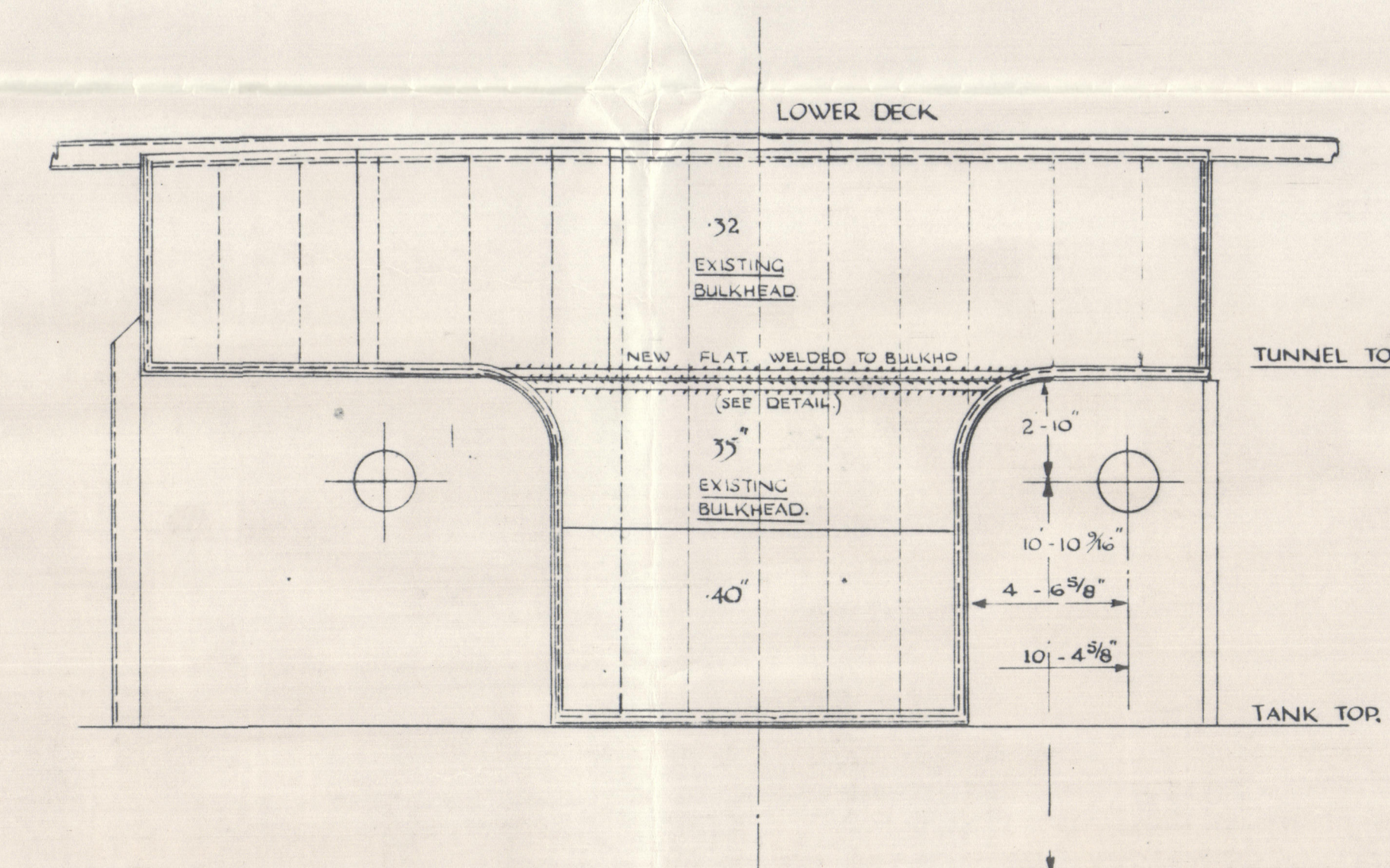
SCALE 1/4" = 1 FOOT



PLAN VIEW AT TUNNEL DECK



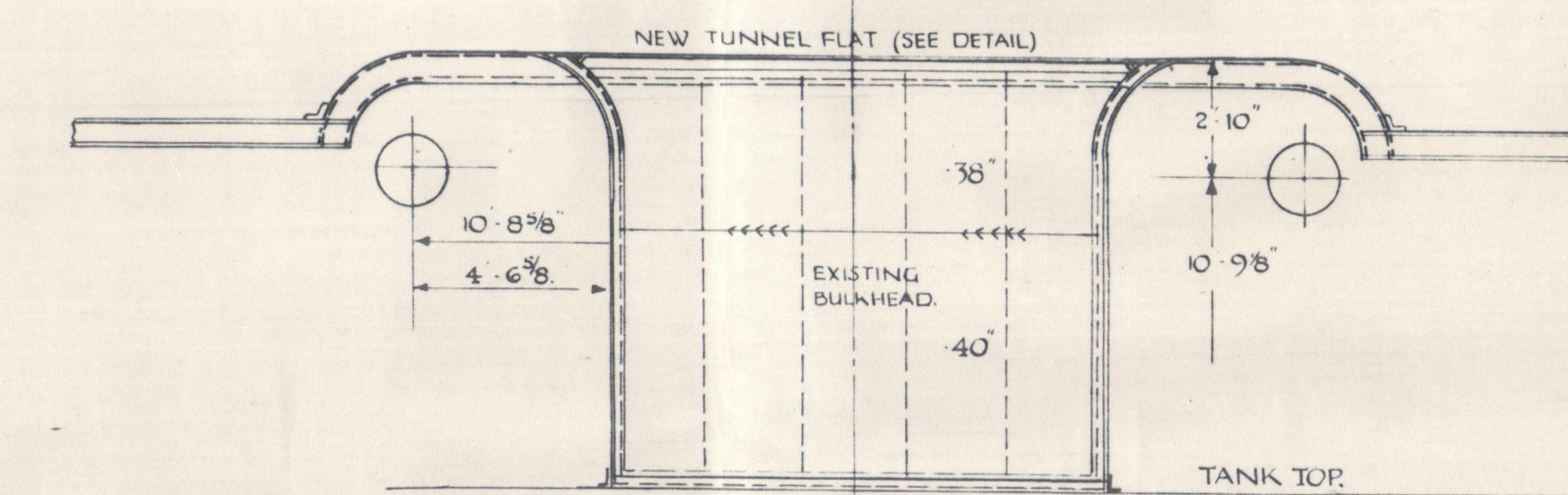
SECTION AT FR 34 LOOKING FORD



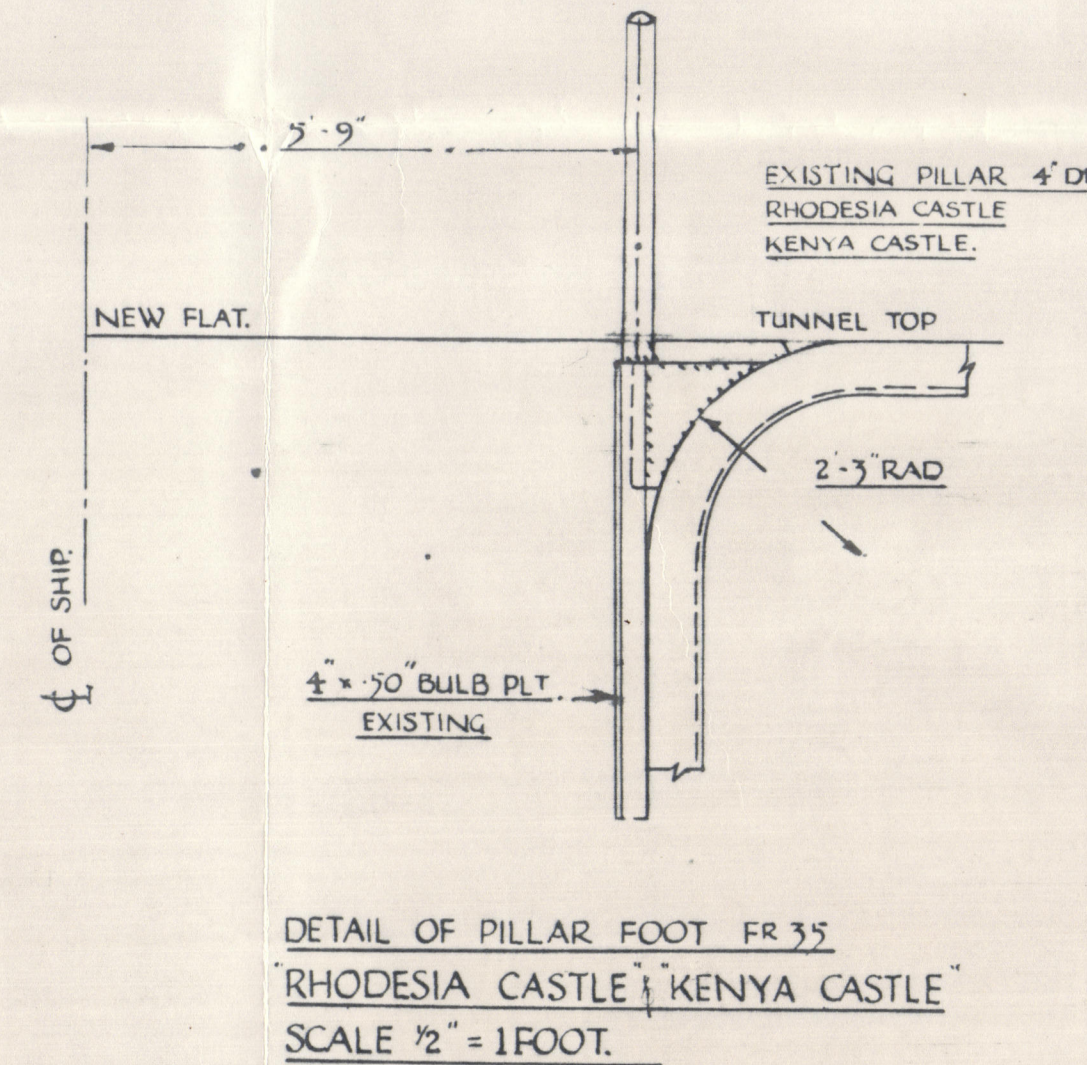
BULKHEAD FR 32 LOOKING FORD

| MATERIAL ORDER | | | | |
|----------------|------|---------|---------|-------|
| Nº | MARK | LENGTH | BREADTH | GUAGE |
| 1 PLT | TF/1 | 15'-3" | 85 1/2" | 40" |
| 1 " | 2 | 15'-6" | 87 1/2" | 50" |
| 1 " | 3 | 15'-8" | 87 1/2" | 50" |
| 1 " | 4 | 15'-10" | 86 1/2" | 40" |
| 1 " | 5 | 16'-0" | 84" | 40" |
| 1 " | 6 | 15'-0" | 37" | 40" |

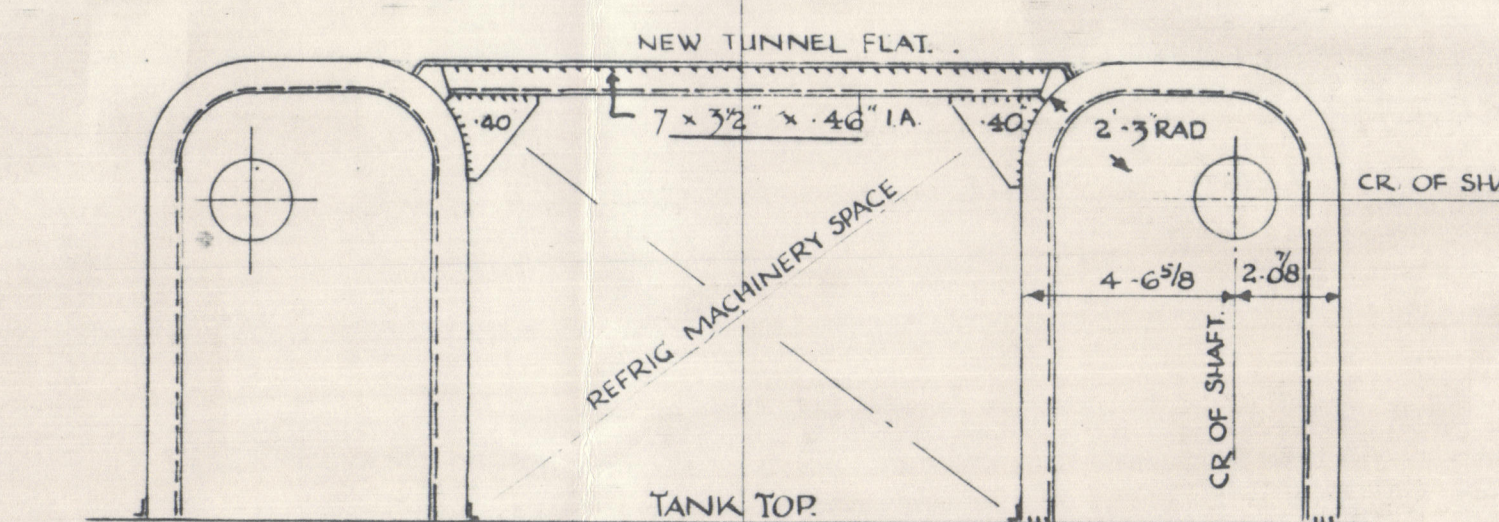
| SECTIONS Dº | | | | |
|-------------|------|--------|-----------------|--|
| 6 BARS | TF/1 | 28'-0" | 7'-3 1/2" x 46" | |
| 2 F.B. | 2 | 15'-6" | 5'-1/2" F.B. | |



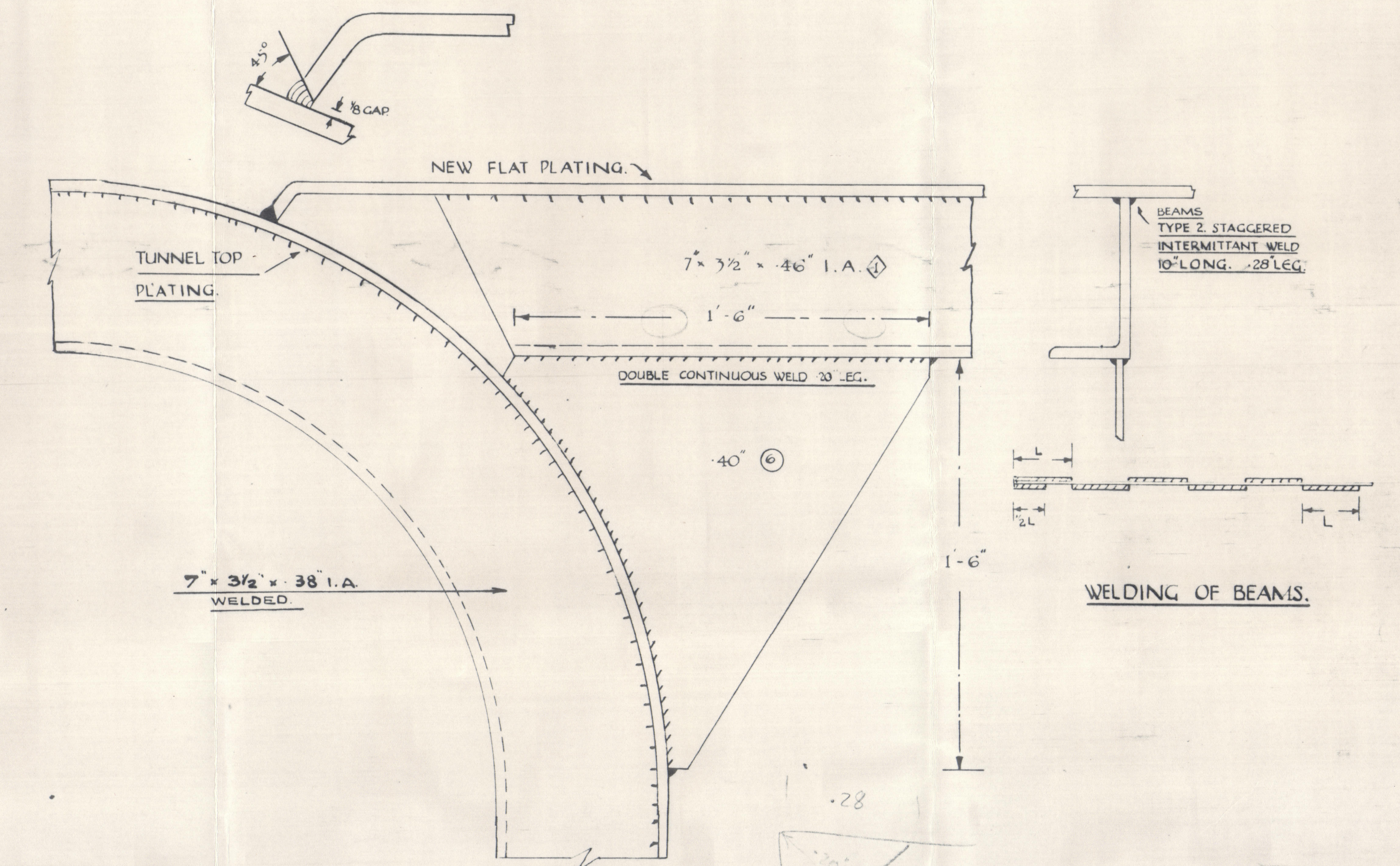
SECTION AT FR 45
LOOKING AFT



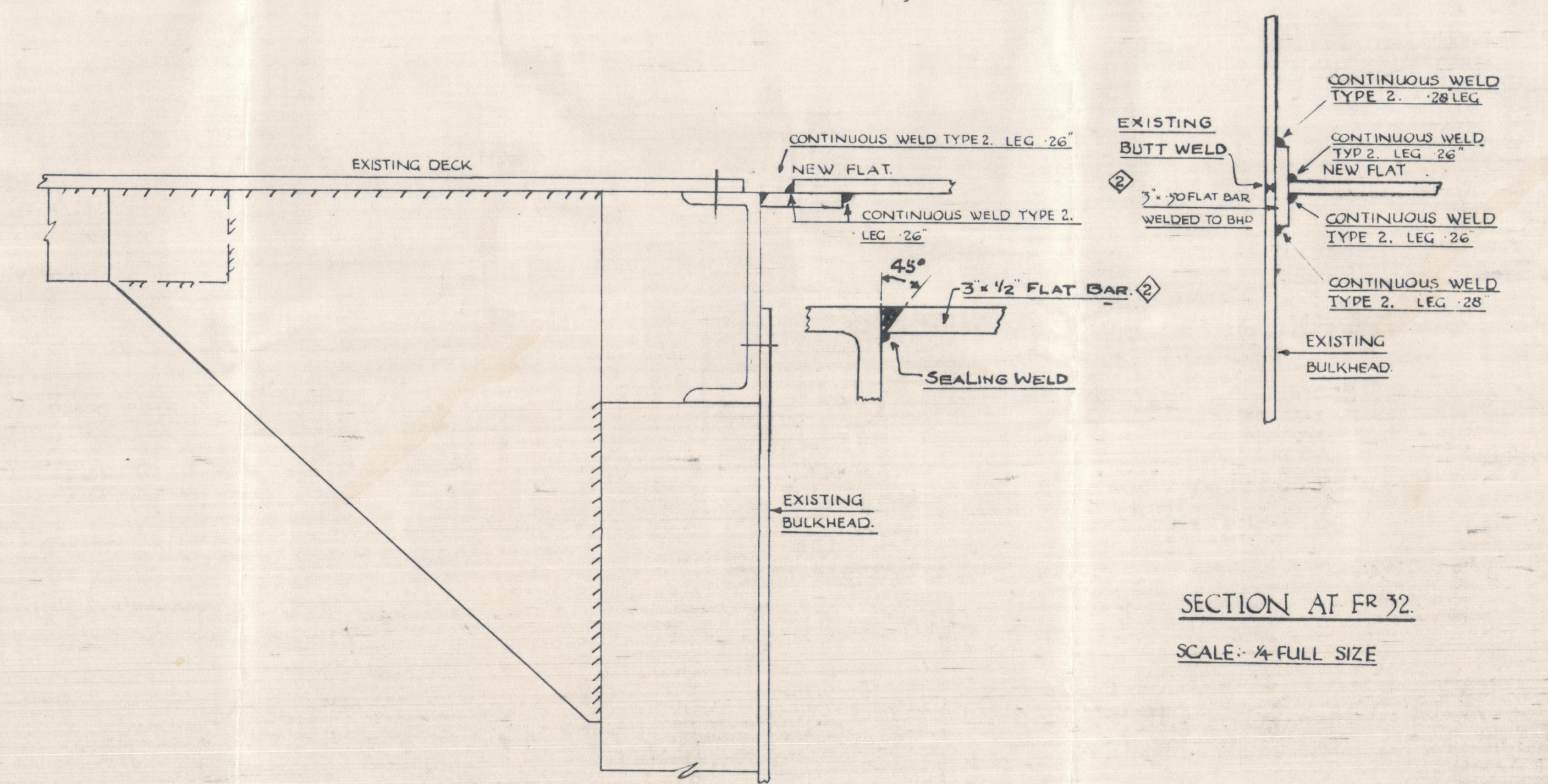
DETAIL OF PILLAR FOOT FR 35
"RHODESIA CASTLE" "KENYA CASTLE"
SCALE 1/2" = 1 FOOT.



TYPICAL SECTION 37-41
LOOKING FORD



TYPICAL SECTION
SCALE 1/4" FULL SIZE



SECTION AT FR 32
SCALE: 1/4" FULL SIZE

Liverpool Works
HARLAND & WOLFF
8 JUN 1960
Shipbuilders & Engineers
BELFAST

HARLAND & WOLFF
8 JAN 1961
LIVERPOOL

SS/45 "Rhodesia Castle"
TO ACCOMPANY Sir. Rpt. No. 153507
Dated 28/11/60
SUBJECT:- Flat in Ek. for frig. machy



© 2020

Lloyd's Register
Foundation

005353-005357-0088