

EQUIPMENT. (Letter M)			
2 BOWER	ANCHORS	Each	25 1/4 CWTs. (Stockless) Coll. W.T.
1	ANCHOR		20 1/4 CWTs. (") 66 1/4 CWTs.
1	STREAM	ANCHOR	(Ex-Stock) 6 CWTs.
210	FATHOMS		1 1/2" Stud Chain Cable.
60	"		3 1/2" F.S.W.R. Stream Wire.
90	"		3 1/4" (6 x 12) F.S.W.R. Towline.
1 @ 90	"		6" Manilla Hawser.
1 @ 90	"		5" Manilla Warp.

M.V. WELSH COAST MIDSHIP SECTION

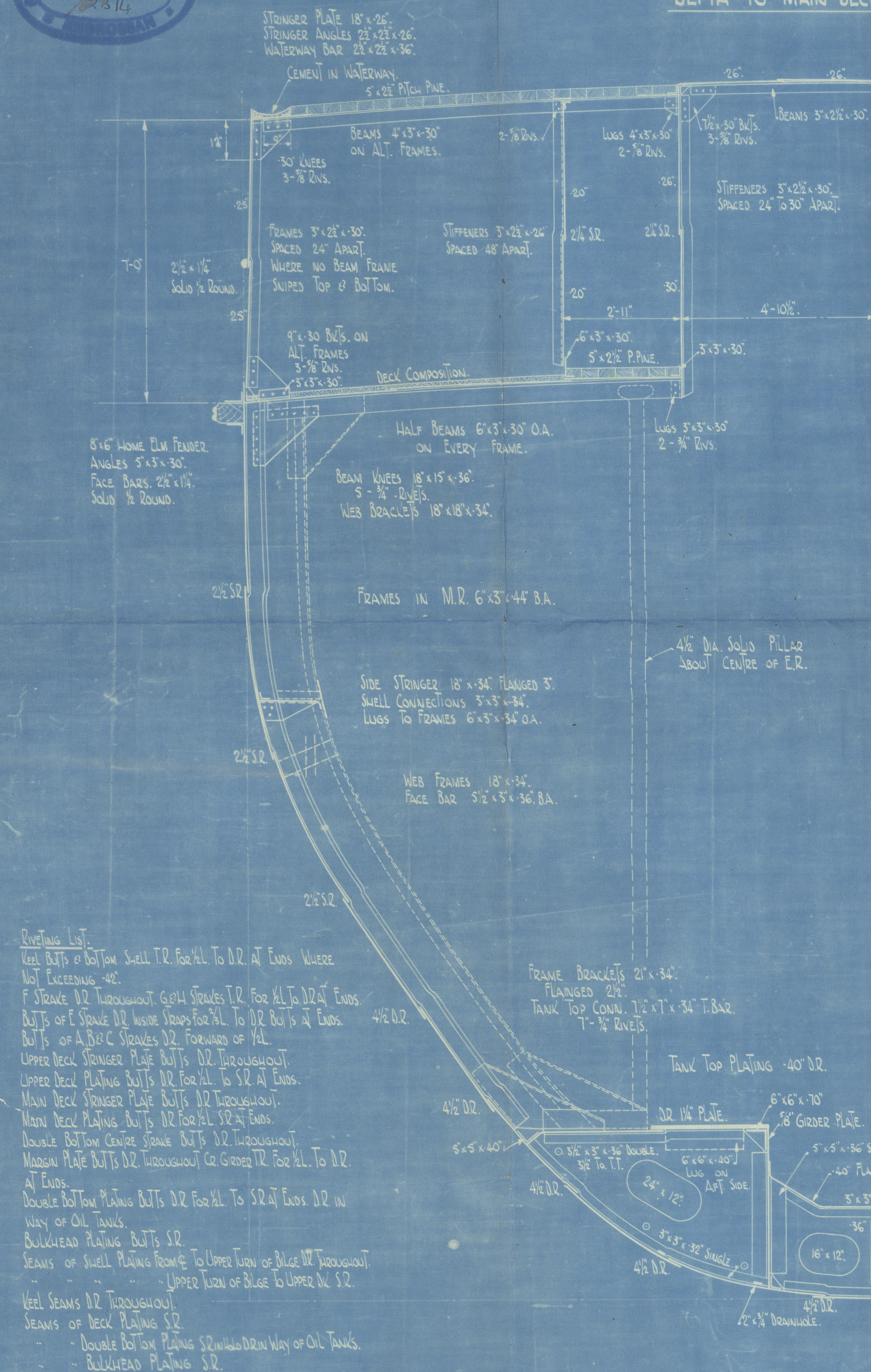
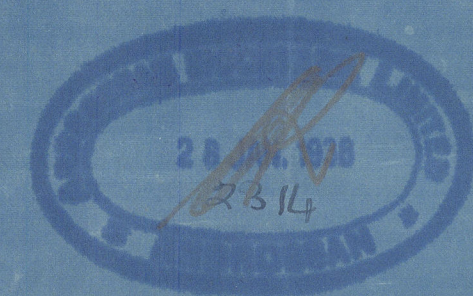
SCALE: 1/2" = 1 FOOT.

TO CLASS 100 A.I. WITH FREEBOARD CORRESPONDING TO A C.S.S. VESSEL WITH TONNAGE OPENING.

DIMENSIONS: LENGTH O.A. 209'-7", LENGTH B.P. 199'-0", BREADTH MLD. 33'-0".

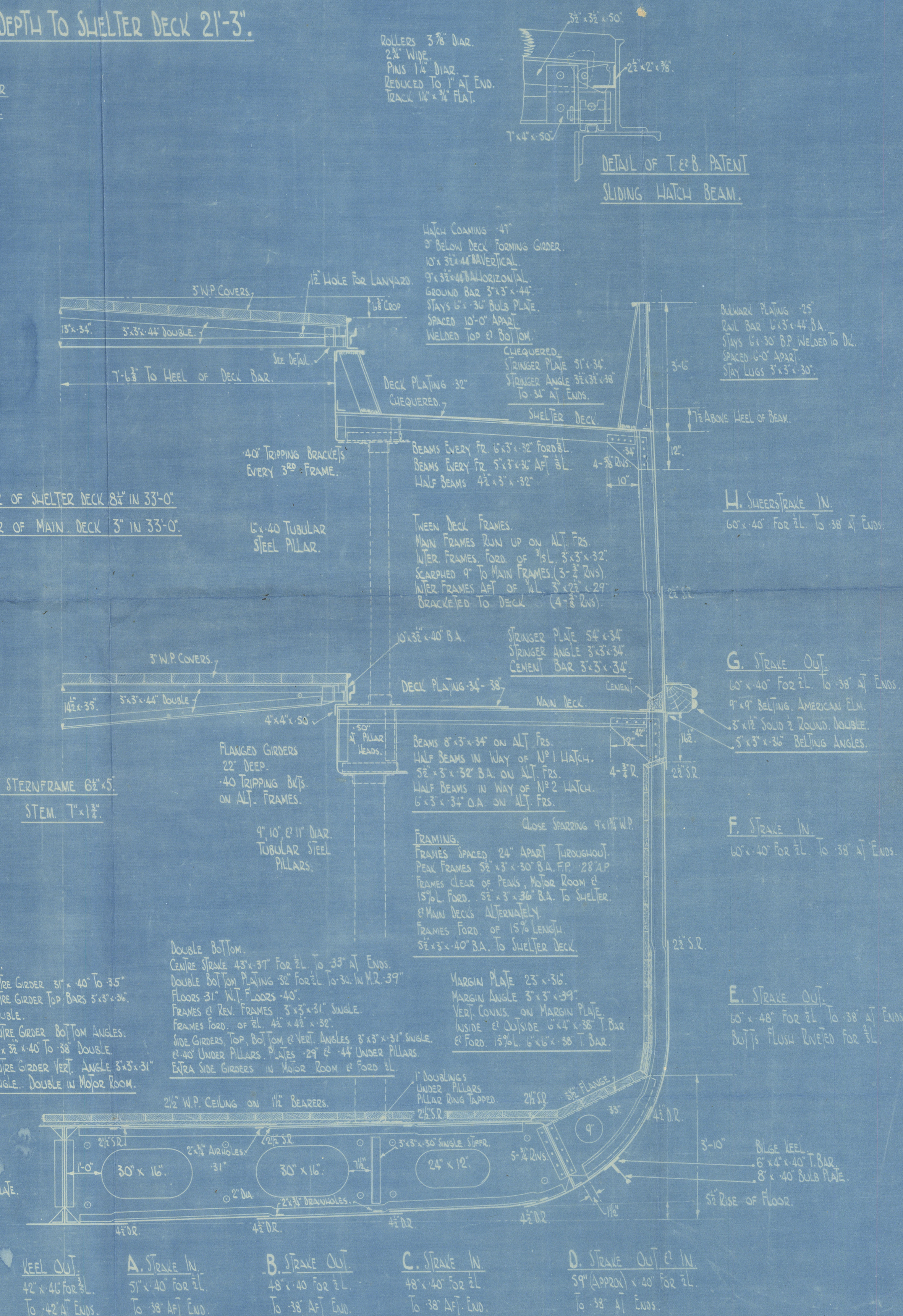
DEPTH TO MAIN DECK 13'-8", DEPTH TO SHELTER DECK 21'-3".

LLOYD'S NUMERALS.	
L	= 199.0.
B	= 33.0.
D	= 21.25.
d	IN HOLD = 11.08.
d	IN MOTOR ROOM = 17.04.
L x D	= 199 x 21.16 = 4211.
L x (B+D)	= 199 x 54.16 = 10778.
L D	= 199 / 21.25 = 9.36.



NORMAL CAMBER ON CASING TOP.

CAMBER OF SHELTER DECK 8 1/2" IN 33'-0".
CAMBER OF MAIN DECK 3" IN 33'-0".



SECTION THRO' MOTOR ROOM.

SECTION THRO' HOLD.

NOTE: STRAKES A, B, & C 44" FROM 1/2" TO RULE POSITION OF COLLISION BULKHEAD.

Ardrossan Dockyard Ltd

MIDSHIP SECTION

No. 368

EX
"WELSH COAST"

EX ~~SARK COAST~~ as built.

1111.
29.1.38.

~~1111.~~

X GUERNSEY COAST X

WRECK SECTION 1064

GLASGOW REPORT No. 59180

Sister Vessels:- ~~MILITARY~~

No 364 ^{EX} Auburn Coast Gls Rpt. No 57844

367 Norfolk Coast " " 59050

