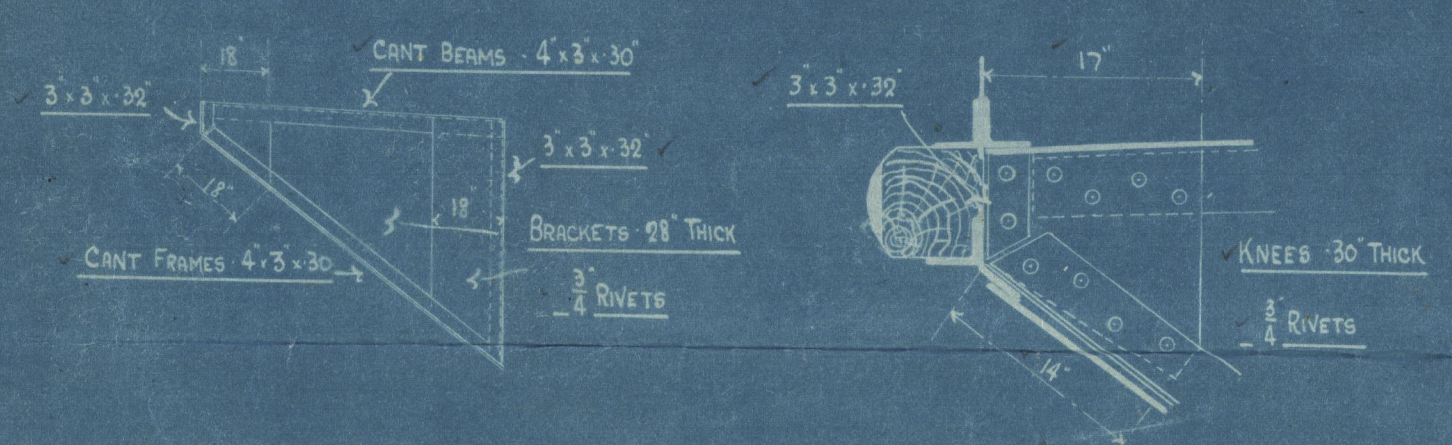


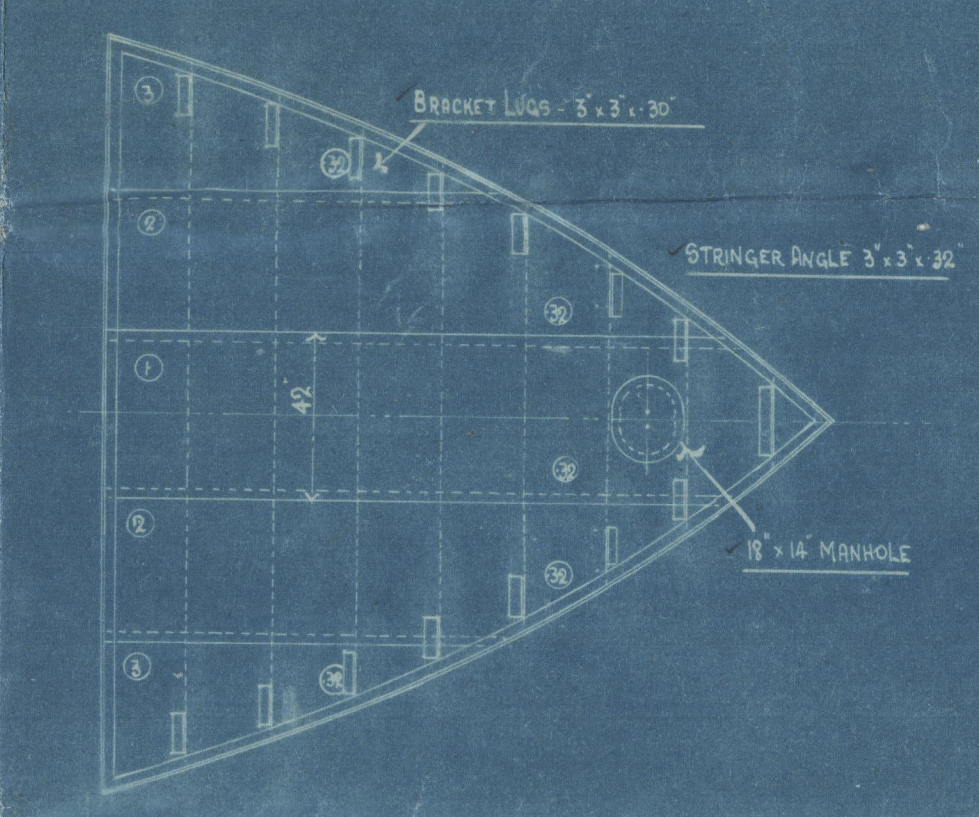
24/9/19

LLOYD'S NUMERALS
 TRANSVERSE NUMBER (B+D) - 33.5
 LONGITUDINAL L (B+D) - 4355
 DEPTH (d) - 9.55
 PROPORTIONS $\frac{1}{5} = 12.4$ $\frac{1}{5} = 5.63$ $\frac{1}{5}$ AT RD DECK - UNDER 10



DETAIL OF CANT FRAMES

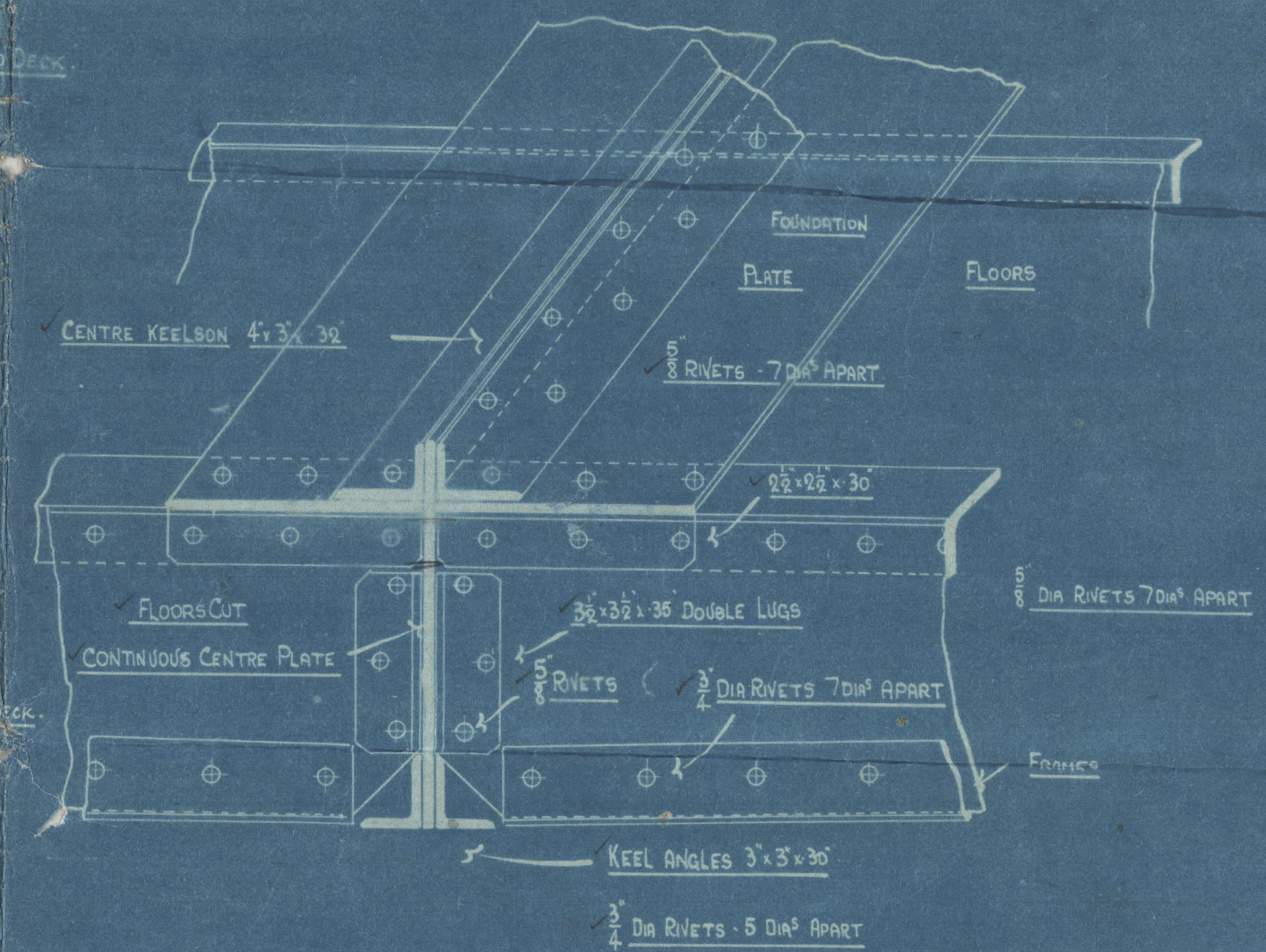
ARRANGEMENT OF FRAMES AT AFT KNUCKLE



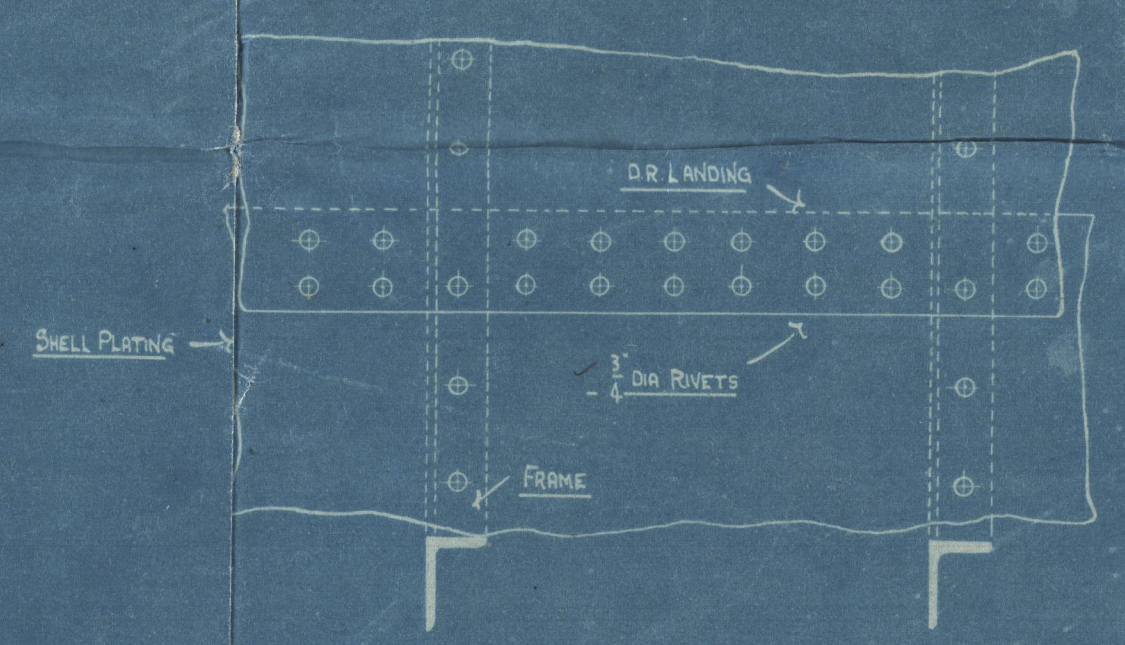
DETAIL OF FORE PEAK TANK TOP



DETAIL OF BRIDGE DECK



ELEVATION OF FLOORS



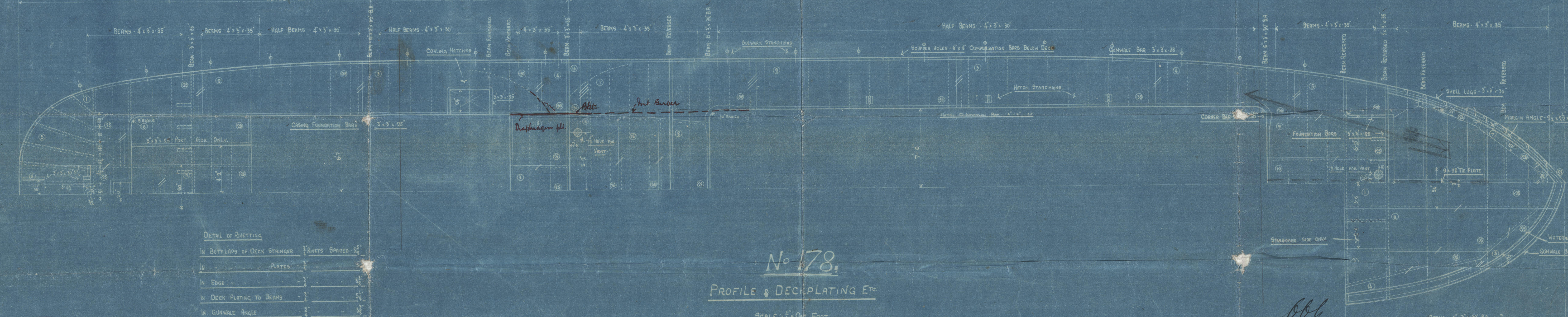
RIVETING IN SHELL MIDSHIPS



PLAN OF HATCH TO BE SUBMITTED

RAISED QUARTER DECK

MAIN DECK



Nº 178

PROFILE & DECK PLATING E.T.

SCALE: 1/4" = ONE FOOT

DETAIL OF RIVETING

IN BUTT LAPS OF DECK STRINGER	1/2" RIVETS SPACED 2'
IN PLATES	1/2"
IN EDGE	1/2"
IN DECK PLATING TO BEAMS	1/2"
IN GUNWALE ANGLE	1/2"
BREADTH OF DOUBLE RIVETED BUTT LAPS	5"
TREBLE	7 1/2"
SINGLE	5"



bb.
 24-9-19.

FORCASTLE DECK

005377-005386-0157

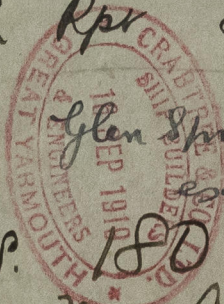
Glen Spray
Crabtree H.

S.S. 178

Profile

^{s/s} "Start Point."
^{s/s} Vox Maris

Ln Rpt 83242



(S.S. 180 *
S.S. Mary Aiston II)

Ln. Rpt. No. 84005

(SS No 181
SS Cannon)

Ln Rpt 84394 Register

005377-005386-0157