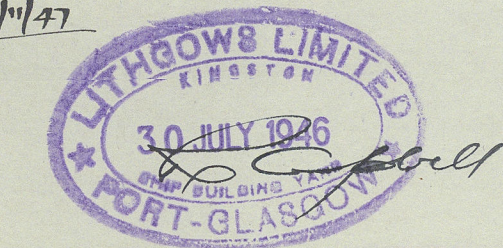


# CAST STEEL STERNFRAME.

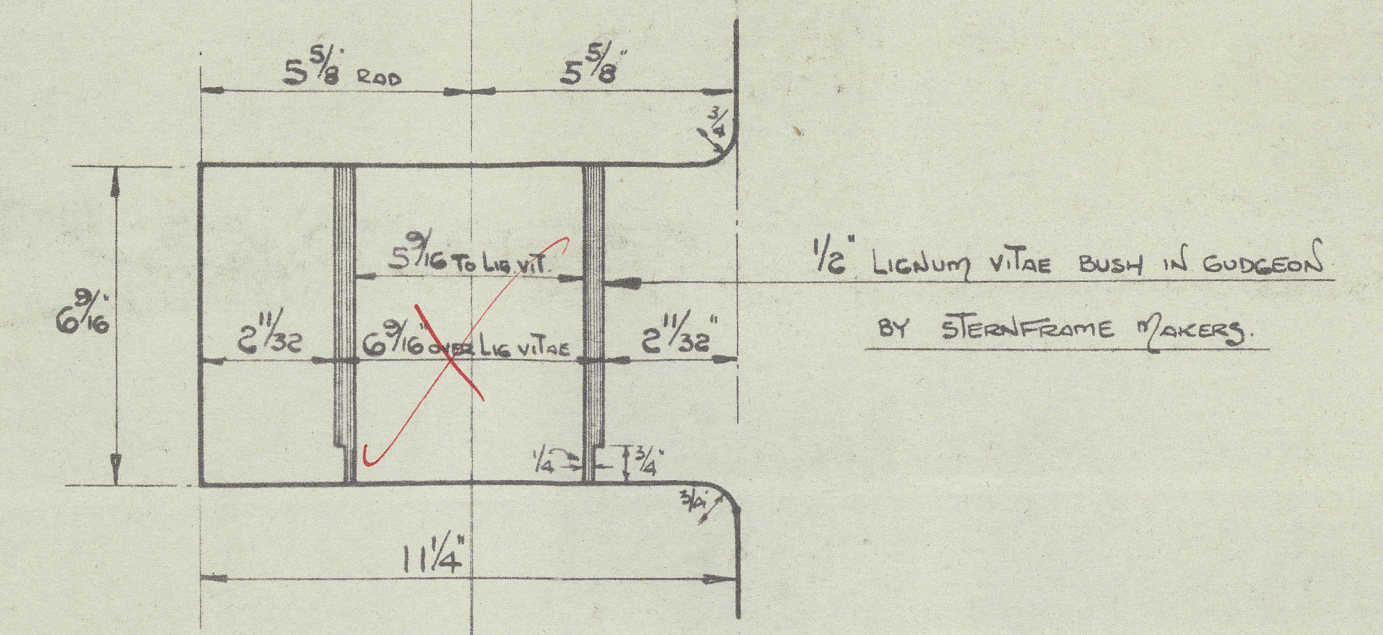
1049  
S.S. N° 1031



SCALE 1" = ONE FT.  
DETAILS AS INDICATED.

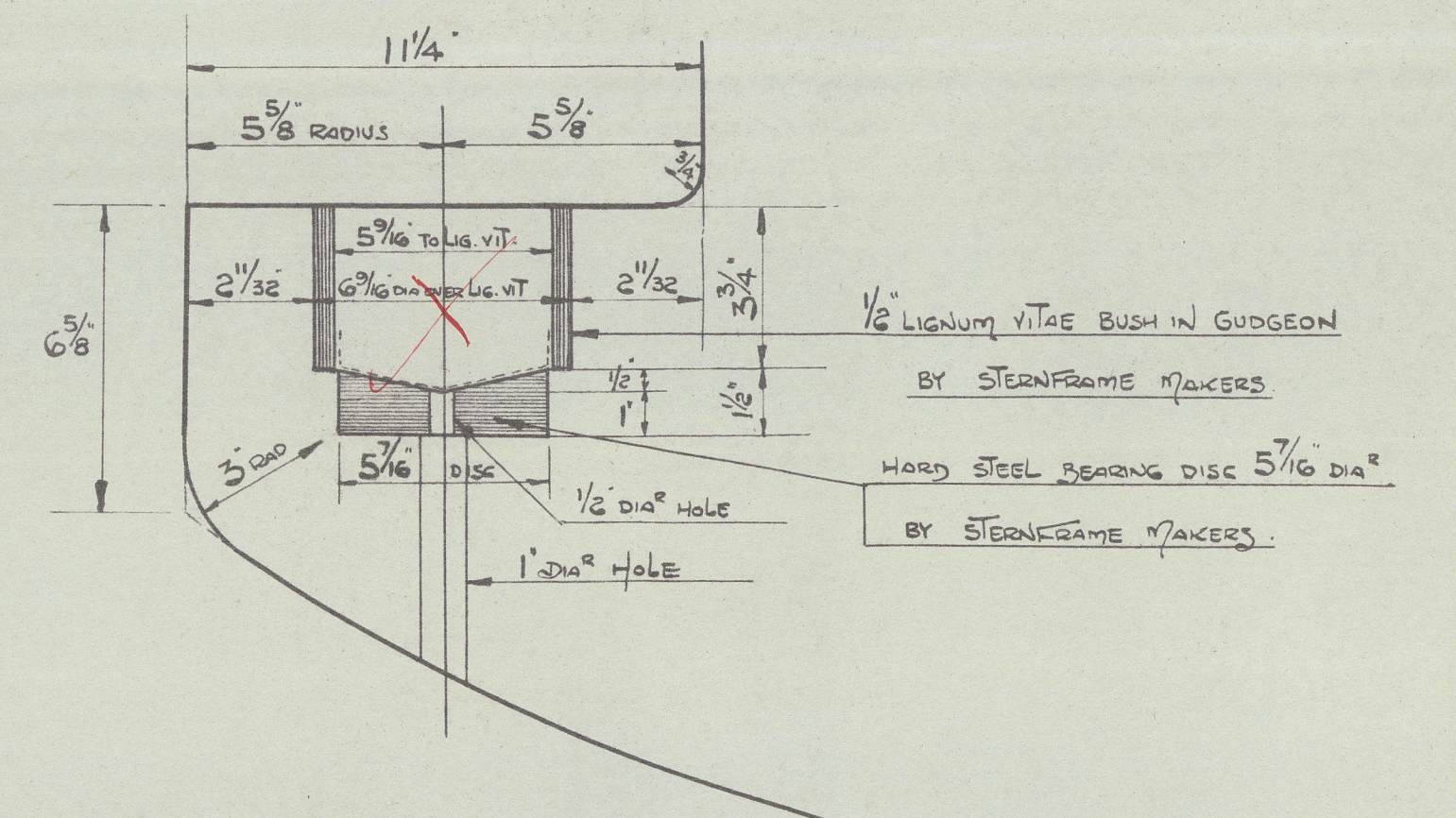
DIMENSIONS = 345'-0" B.P. (ON LIND) X 49'-0" EXT X 29'-7" MID TO UPPER DECK X 21'-6" MID TO 2<sup>ND</sup> DECK  
TO CLASS 100. A.I. WITH FREEDOM 2 LLOYDS SPECIAL SURVEY, S.S. VESSEL WITH CRUISER SPEED  
FIRST LONGITUDINAL NUMBER L+D = 10177.5, RULE STERNFRAME 10'-6"  
CASTING NOT TO EXCEED GIVEN SCANTLING, EXCESS OVER ESTIMATED WEIGHT WILL NOT BE PAID  
STERNFRAME TO BE RIVET HOLE SPACED, WITH RIVET HOLES SPACED AS SHOWN  
RIVET HOLES TO BE SPACED PLUMB THROUGH POST  
NO RIVET HOLES TO BE BORED IN PROPELLER BOSS  
CENTRE LINE OF STERNFRAME TO BE NICKED ALL ROUND CASTING IN GROUPS OF 3 NICKS SPACED 18" APART  
PATTERNS OF STERNFRAME TO BE APPROVED BY SHIPBUILDERS DESIGNER, BEFORE CASTING

N° 2

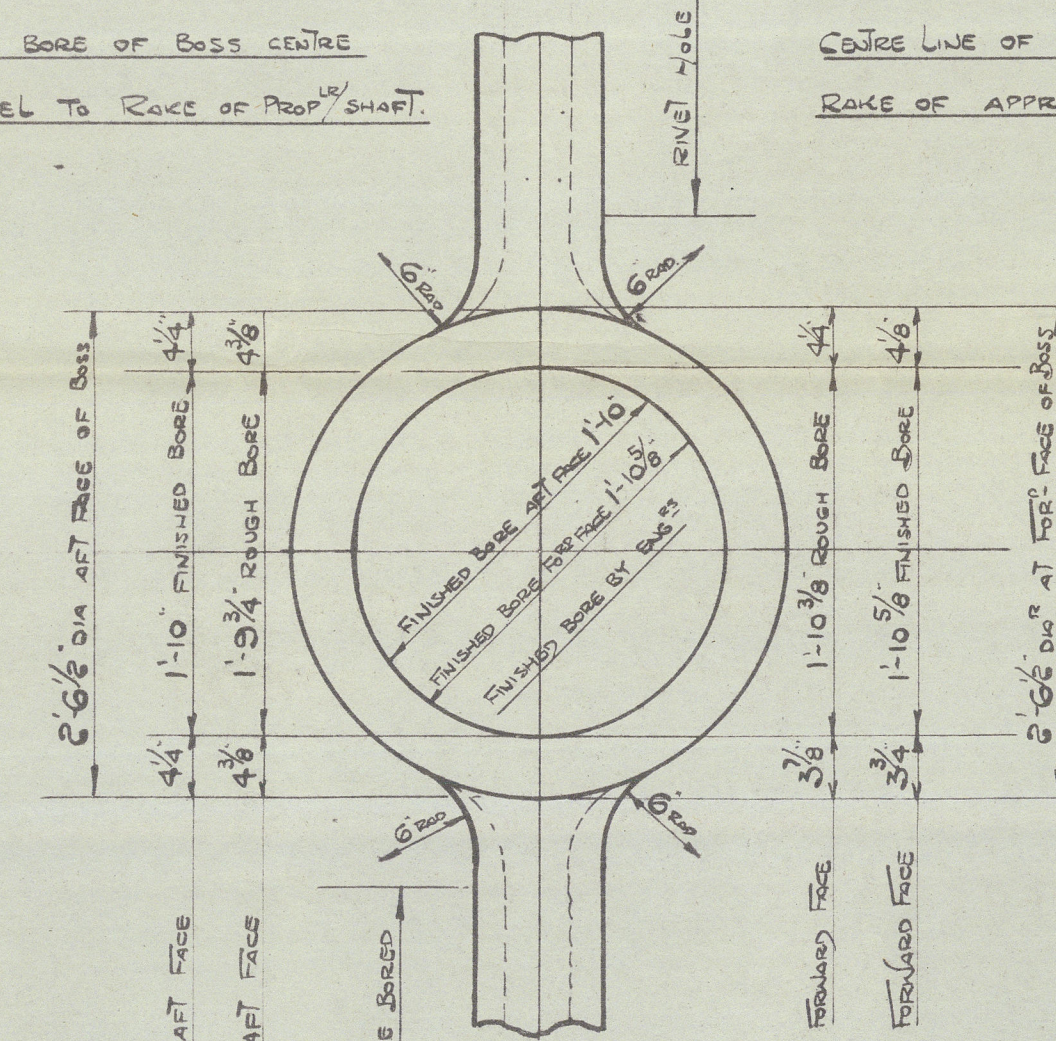


DETAIL of ALL RUDDER GUDGEONS  
(EXCEPT BOTTOM GUDGEON)  
SCALE 1/4" = 1 INCH.

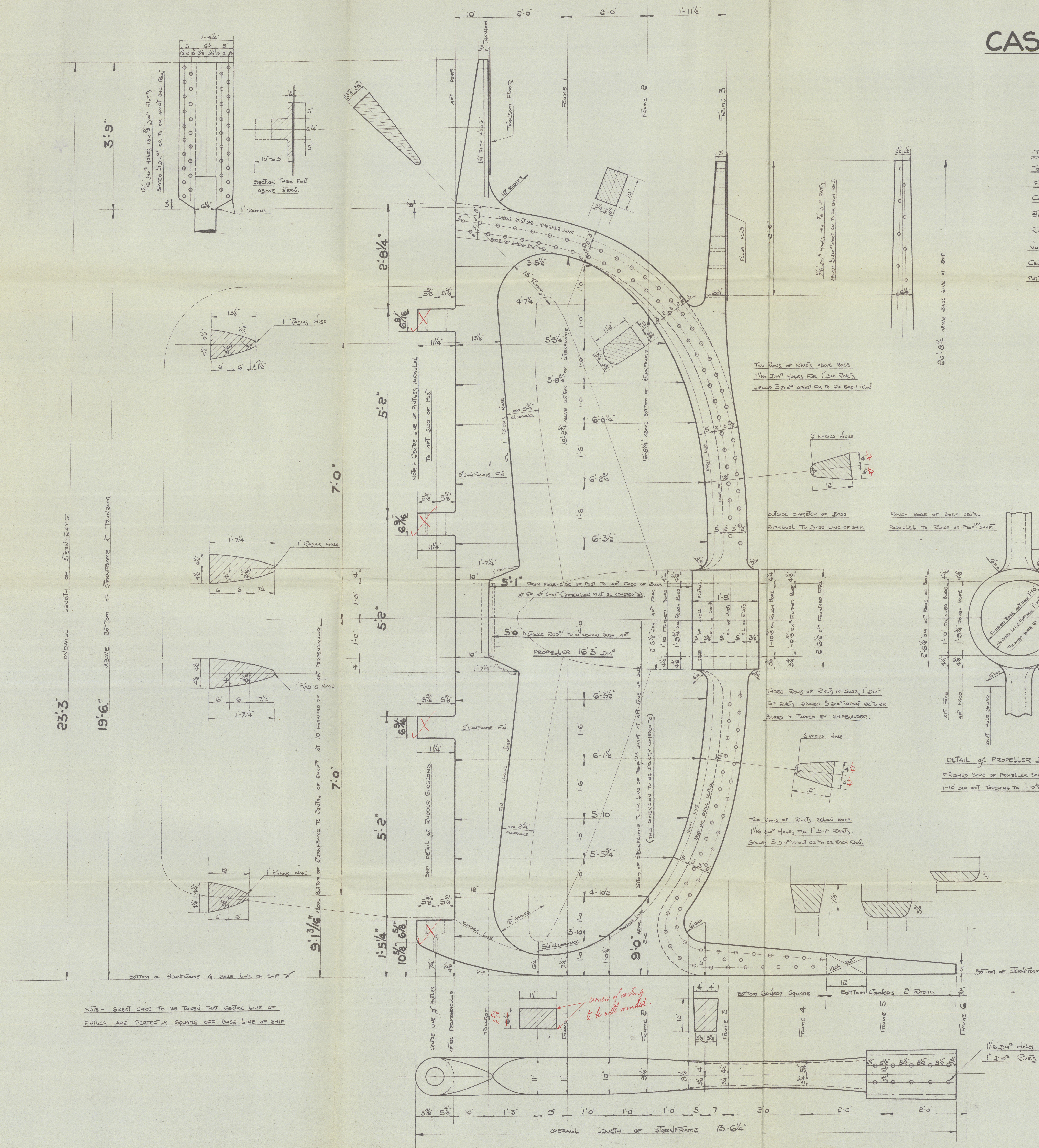
*X Gudgeons to be further considered when  
middle plan is submitted.*



DETAIL of BOTTOM RUDDER GUDGEON  
SCALE 1/4" = 1 INCH.



DETAIL of PROPELLER BOSS  
FINISHED BOSS OF PROPELLER BOSS BY END  
1-10 DIA ART TAPERING TO 1-10 3/8 AT FACE



NOTE - GREAT CARE TO BE TAKEN THAT CENTRE LINE OF  
PISTONS ARE PERFECTLY SQUARE OFF BASE LINE OF SHIP

M/M 5393

3

LITHGOW'S N<sup>o</sup> ~~1031~~ 1049 <sup>12th</sup> 18th/47

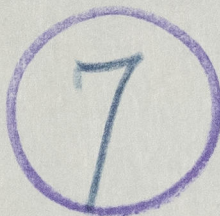
CAST STEEL STERNFRAME.

S.S. "COULGARVE"



GREENOCK FE REP<sup>T</sup> 23858

RECORDS DEPT.,  
LONDON



© 2020

Lloyd's Register  
Foundation

005387-005396-0285