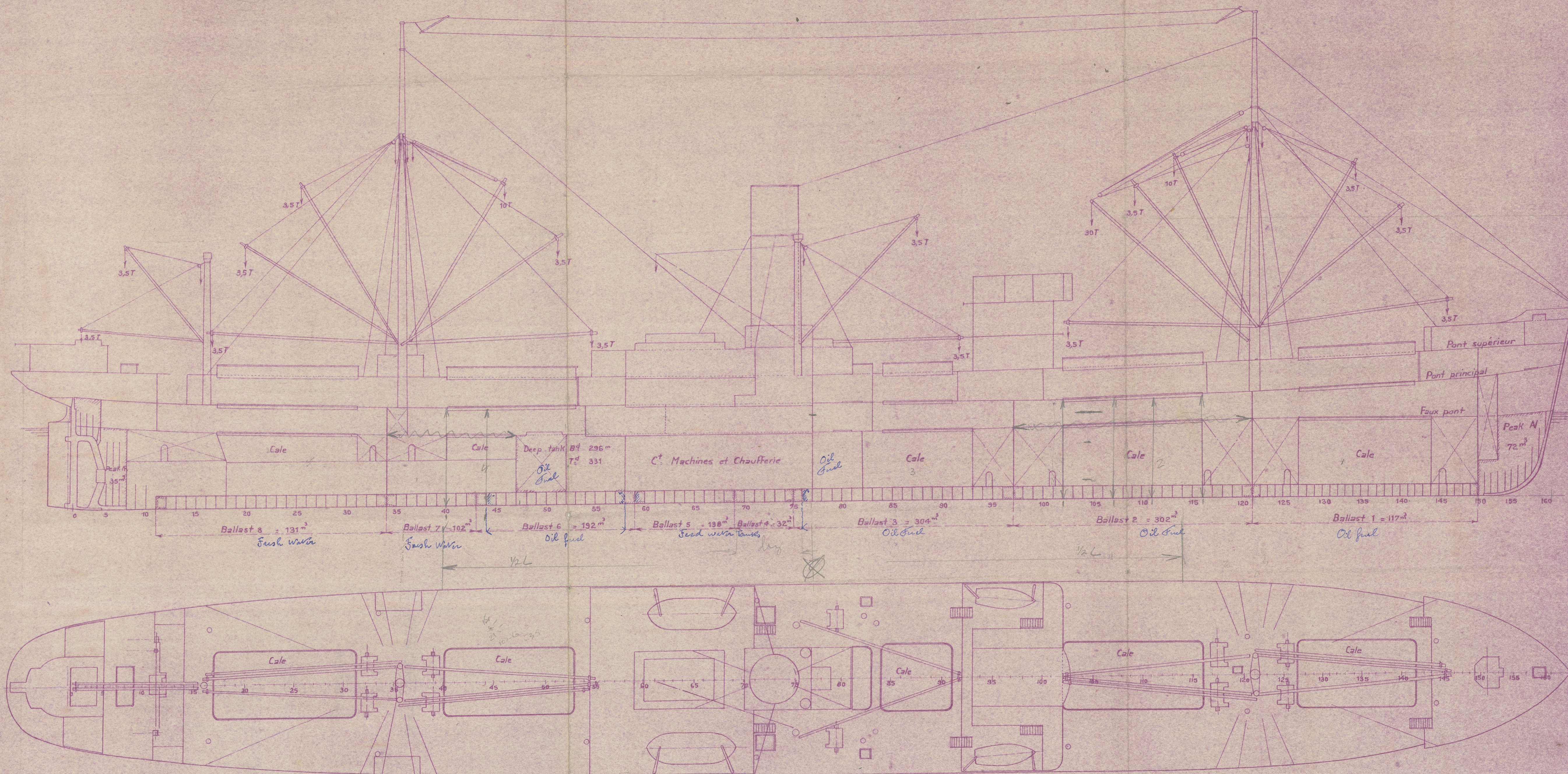


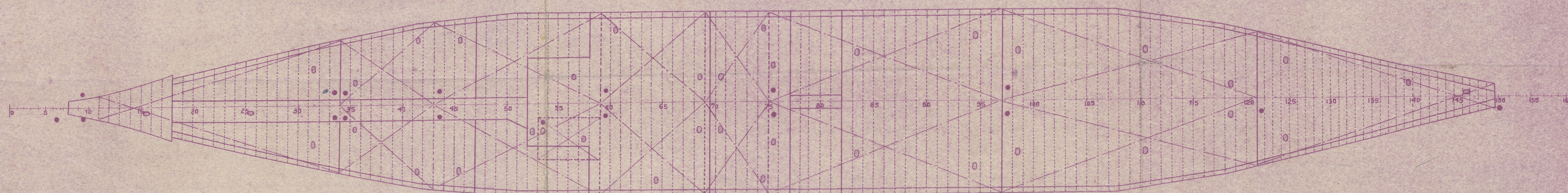
# S<sup>t</sup> Bertrand.

Echelle : 1/200

Longueur 141,25  
 Largeur 17,07  
 Creux 9<sup>m</sup> au pont principal  
 11,18 au pont supérieur  
 Tonnage brut 5521 To 69  
 Tonnage net 3309 To 58



## Plafond de ballast

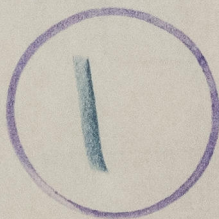


'SAINT BERTRAND' ★

General an.

Profile

RECORDS DEPT.,  
LONDON



© 2020

Lloyd's Register  
Foundation

005403-005411-0065