

28-29
(See Letter)

145
455

NO. 882-3-4-5. STERNFRAME & BOSS ARMS

SCALE - 1/2 IN. = 1 FT.

MATERIAL FOR STERNFRAME - BEST SCRAP IRON FORGING
" " BOSS ARMS - MILD STEEL CASTING.

TESTS - LLOYDS

CODE NO.:-

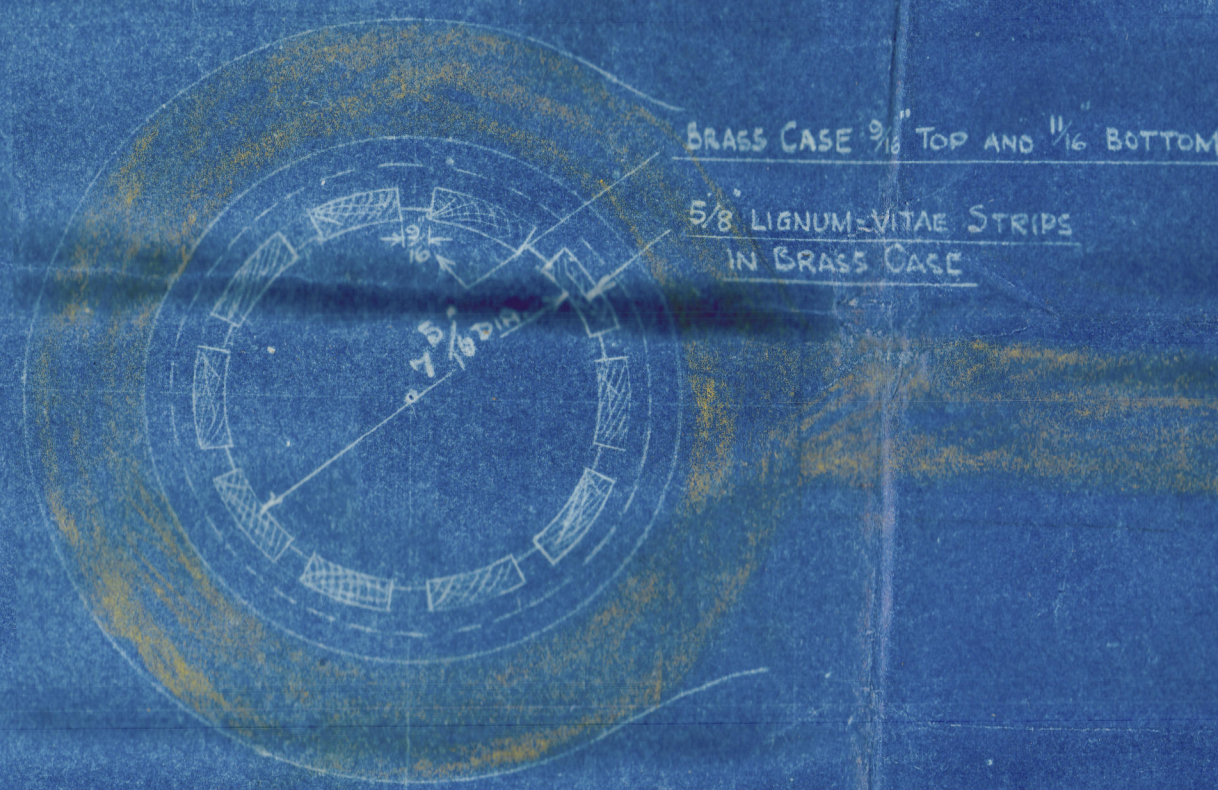
STERNFRAME - NO 18
BOSS ARMS - NO 20

DIA. OF TAIL SHAFT = 15 3/8"

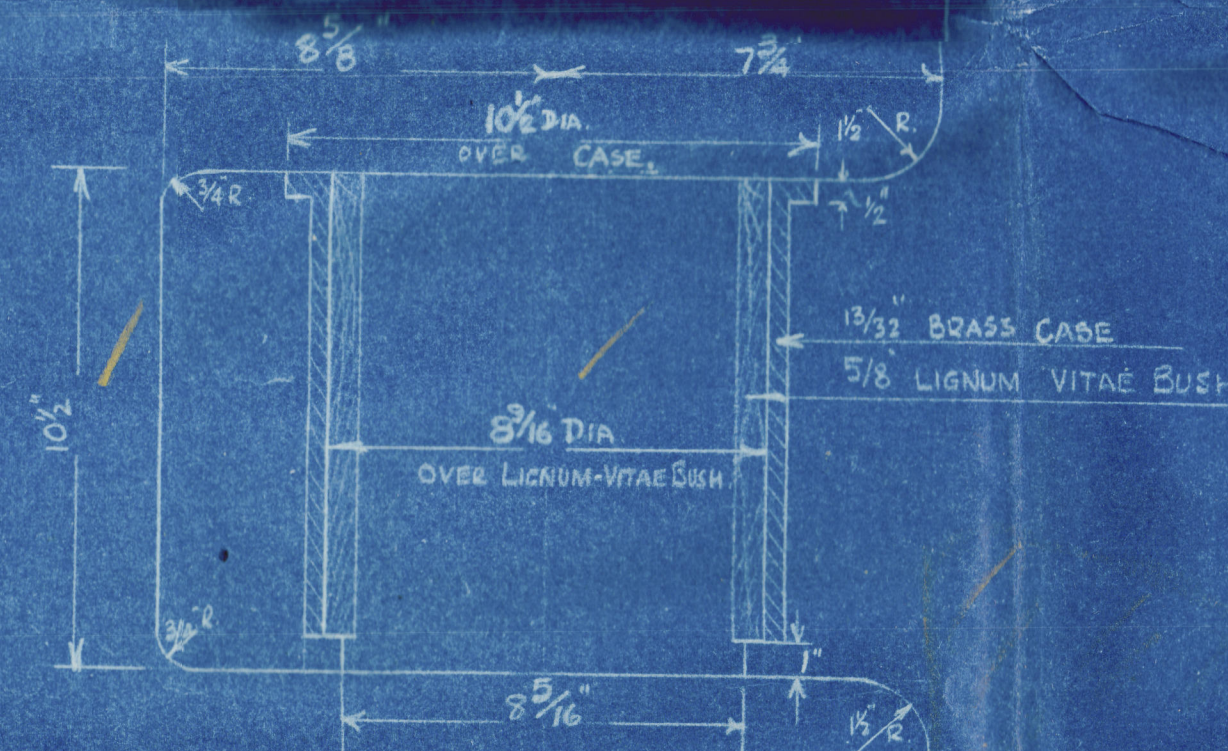
NOTES:-

PARTS TINTED RED TO BE MACHINED
MAKERS TO SUPPLY LIGNUM-VITAE BUSH IN BRASS CASE, AND
HARD STEEL BEARING CAP AS PER DETAILS.

Approved for sternframe only

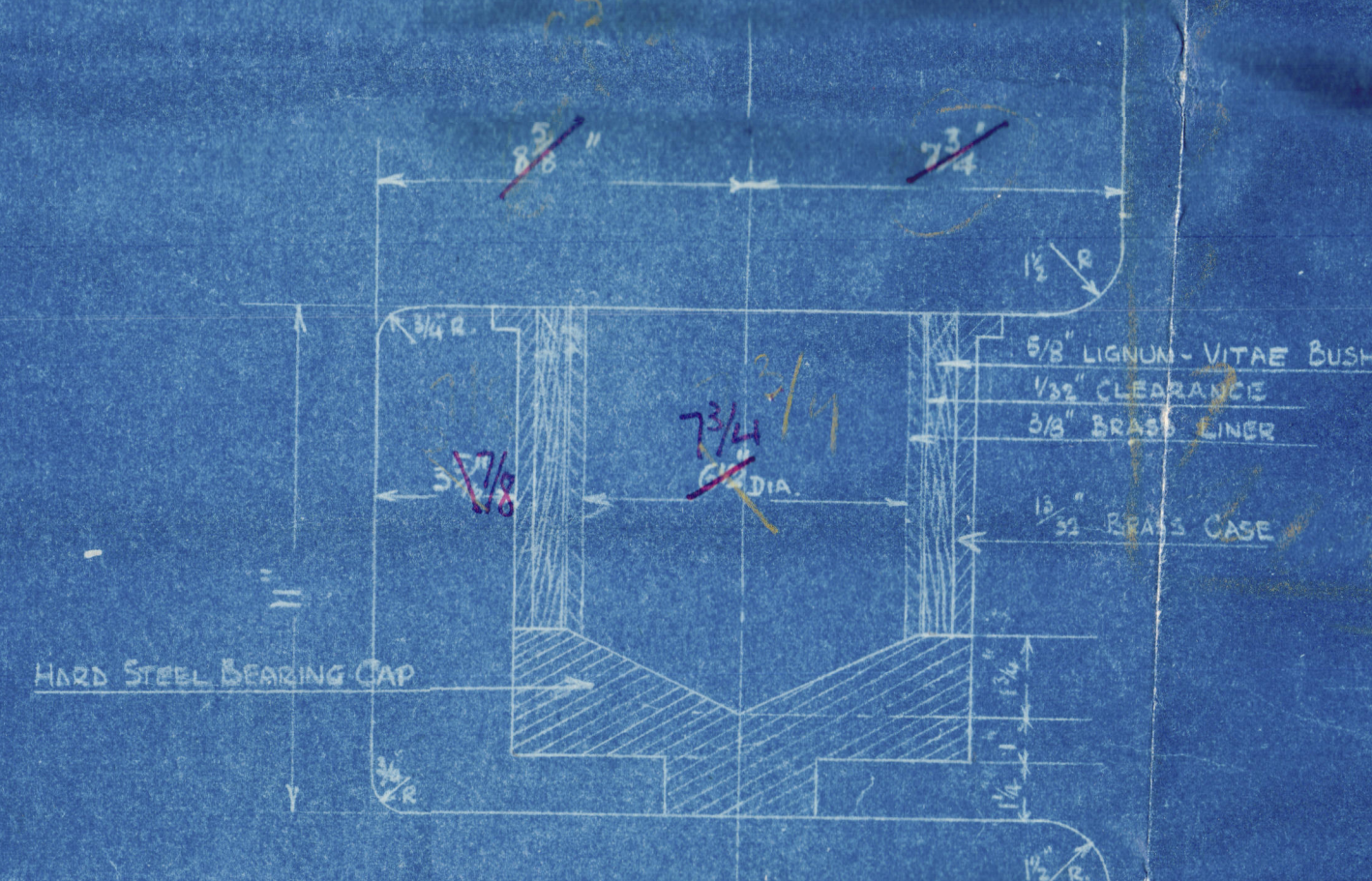


TOP OF BUSH



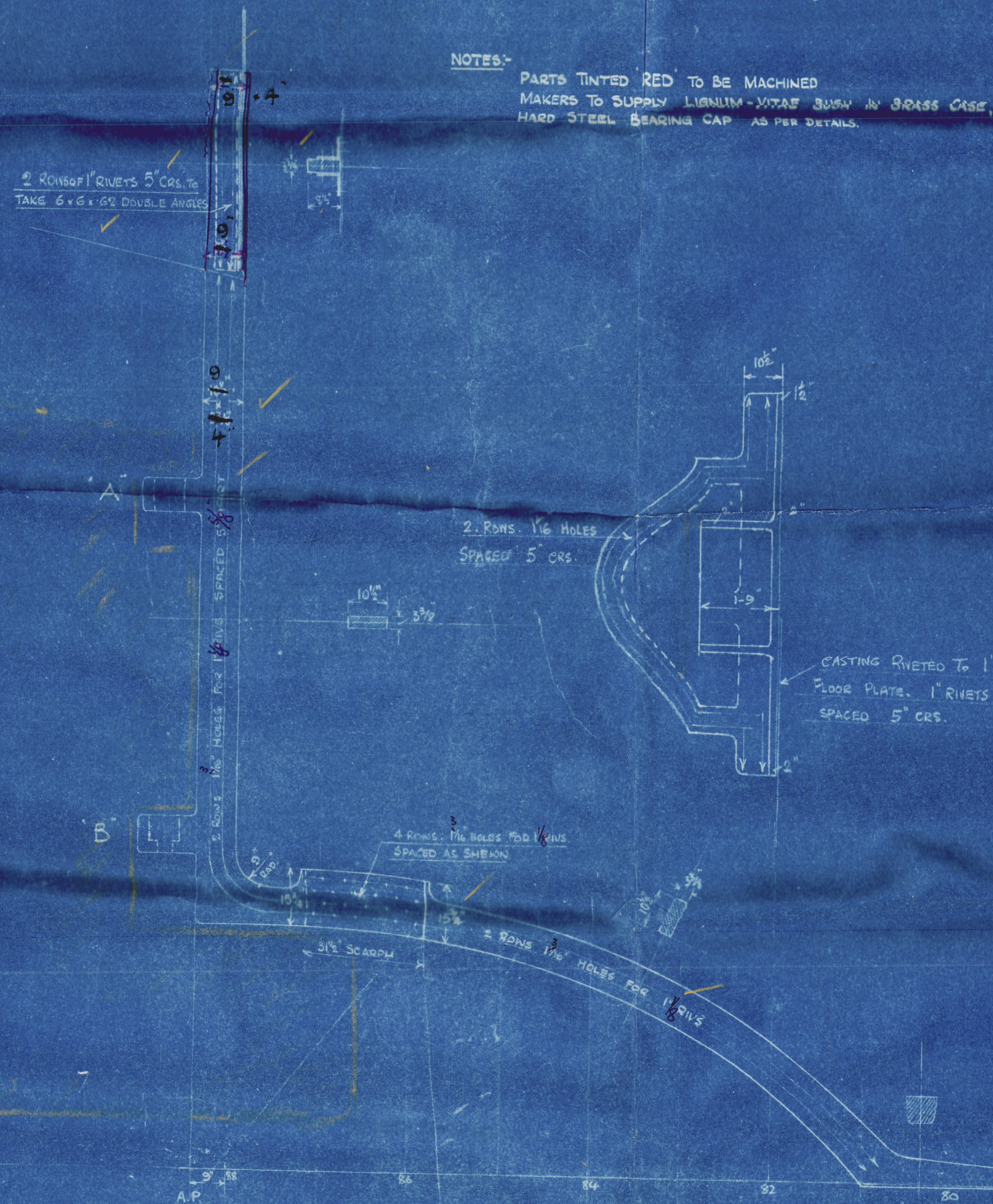
DETAIL OF GUDGEON 'A'

SCALE - 3\"/>

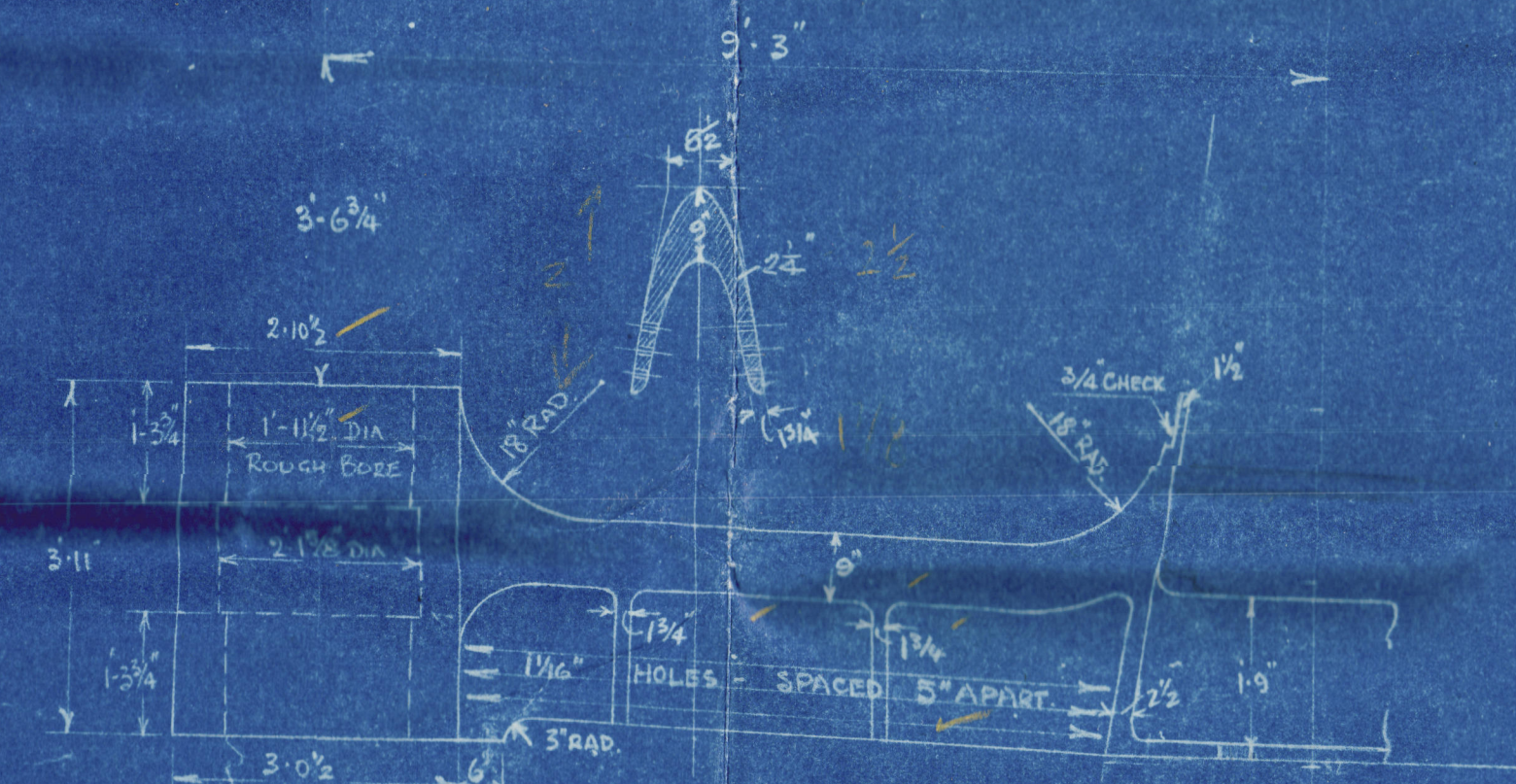


DETAIL OF GUDGEON 'B'

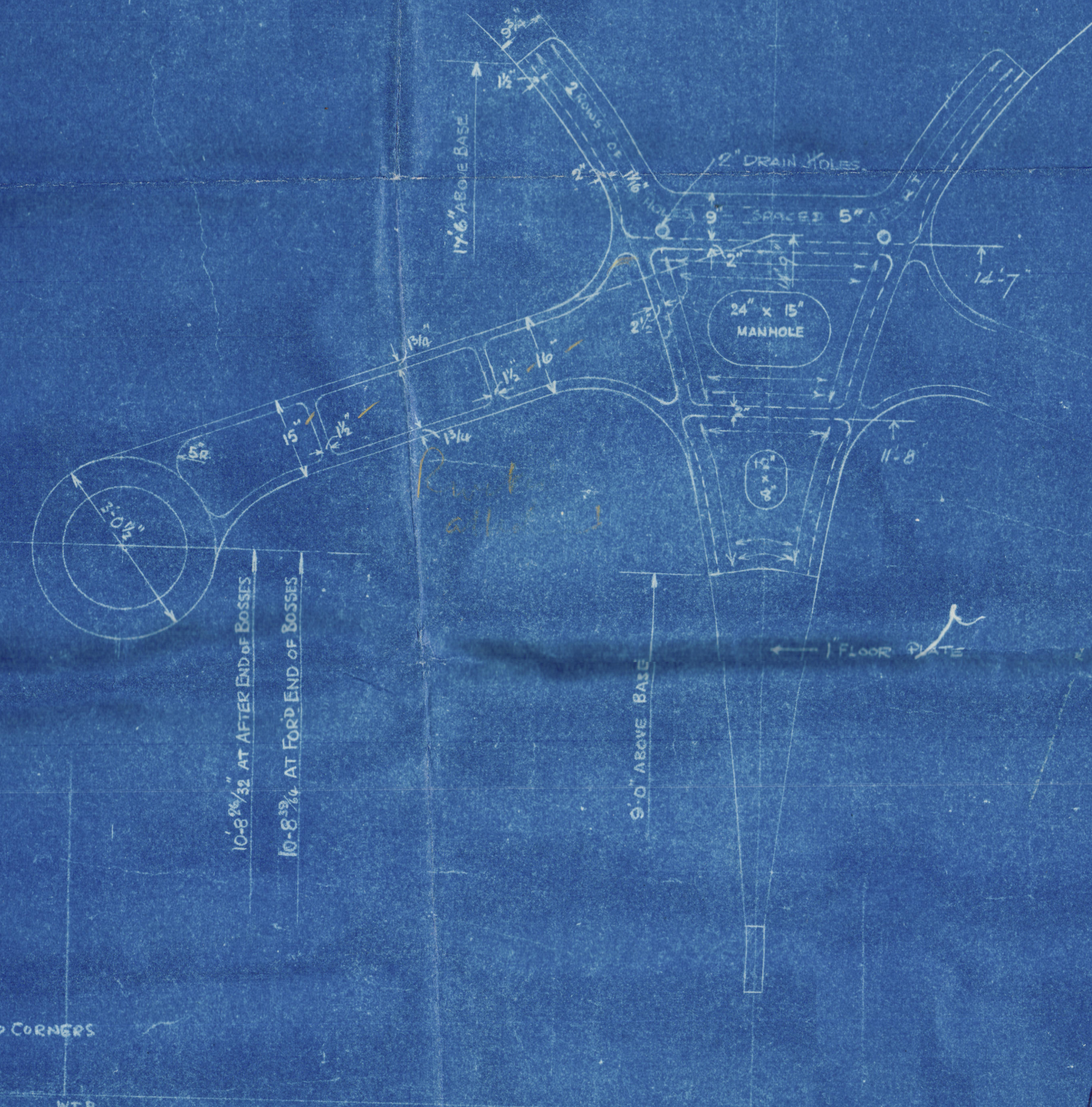
SCALE - 3\"/>



PLAN VIEW.



HALF-PLAN OF BOSS ARMS



SECTION 1' AFT OF FRAME 82

28-29

28/1/29

R

Harland & Wolff. 882.3.4.5.

Stein Jaume & Boss Arms

Copy to Jordan 8/8/29.

882. S.S. "Silvercypress"
transferred to

883. S.S. "Silverwatnott" X

884. S.S. "Silverteak"

885. S.S. "Silversandal"



© 2020

Lloyd's Register
Foundation