

Lloyd's Register of Shipping.

SURVEYS FOR FREEBOARD.
(CONDITIONS OF ASSIGNMENT.)

16 JAN 1942

Ship's Name "SAN VENANCIO"

Port of Survey NEWCASTLE - ON - TYNE.

Official Number

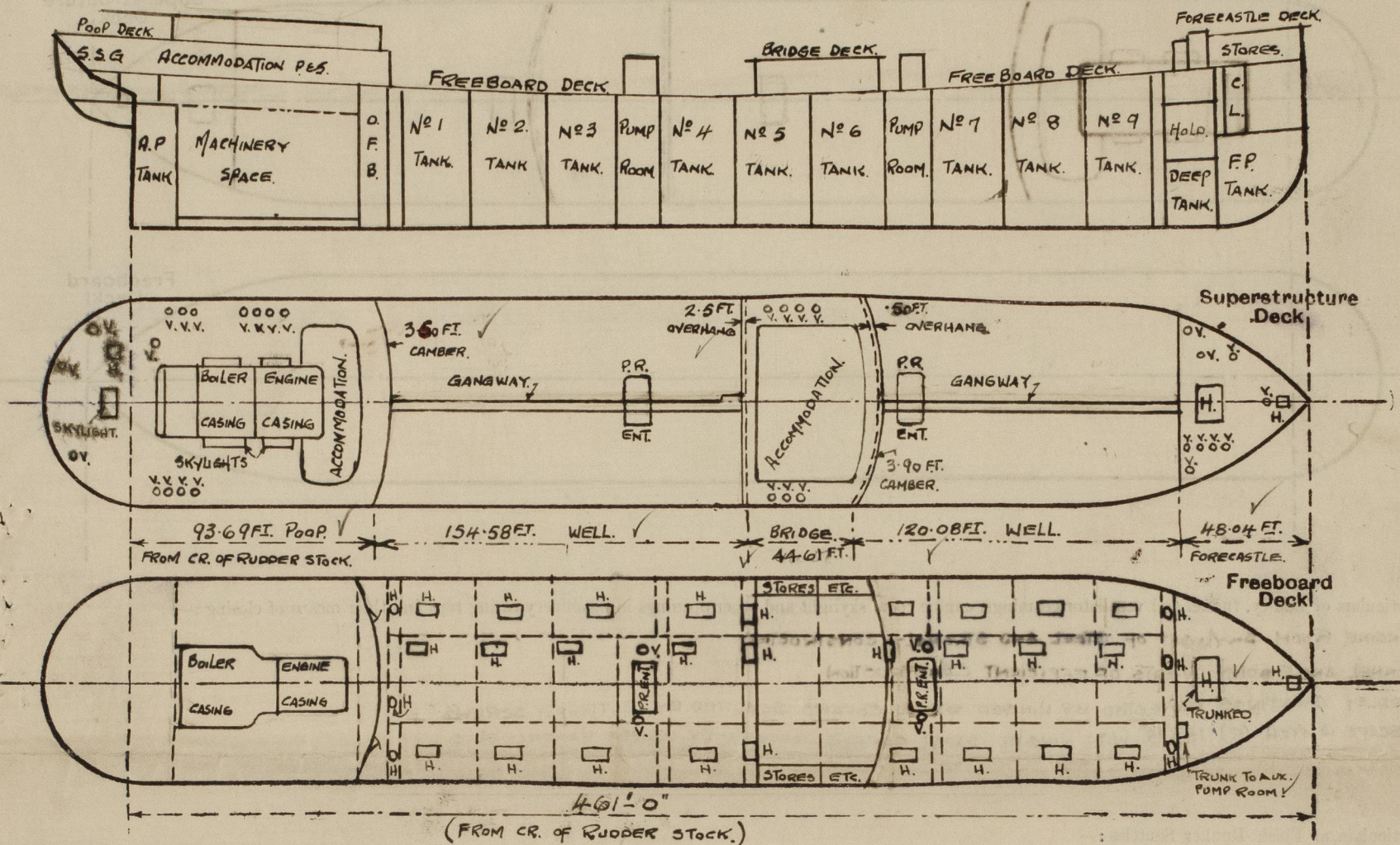
168252

Surveyor's Signature

Nationality and Port of Registry BRITISH,

Date of Survey DURING CONSTRUCTION. 1941-42.

Disposition and dimensions of superstructures, trunks, deckhouses and machinery casings to be inserted in the diagrams and tabular statement:—



Particulars of Superstructures, Trunks, Casings, Deckhouses.

	Coaming	Plating	Stiffeners	Spacing	End Attachments of Stiffeners	Size of Openings	Height of Sills	Height of Casings
Poop Bulkhead ...	44		10 x 3 1/2 x 40 BA	ABOUT 30"	LUSS AT TOP. BRACKETS AT BOTTOM.	5'-0" x 2'-10" (2)	18"	7'-6" ✓
Raised Quarter Deck Bulkhead ...	NONE.							✓
Bridge, After Bulkhead ...		32"	5' x 3' x 30 ANG.	ABOUT 30"	RIVS. THROUGH BOUNDARY BARS.	5'-0" x 3'-0 3/4" (2) A. 5'-0" x 2'-0" (1) B.	18" 20"	7'-6" ✓
Bridge, Forward Bulkhead ...		44"	9' x 3 1/2' x 42 BA	" 33"	BRACKETS TOP AND BOTTOM.	5'-0" x 2'-6" (1)	19"	7'-6" ✓
Forecastle Bulkhead ...		32"	4' x 3' x 34 ANG.	" 30"	RIVS THROUGH BOUNDARY BARS.	5'-0" x 2'-6" (1) A. 5'-4" x 4'-1" (1) B. 4'-1" x 2'-0" (1) C.	18" 23 1/2" 24"	7'-6" ✓
Trunk, Aft ...	NONE.							
Trunk, Forward ...	NONE.							
Exposed Machinery Casings on Freeboard or Raised Quarter Decks ...	NONE							
Exposed Machinery Casings on Superstructure Decks ...	34	30"	3' x 3' x 30" ANG.	30 3/4"	BRACKETS AT TOP, CONTR. BELOW SUPER. DECK.	NONE.		8'-4" ✓
Machinery Casings within Superstructures not fitted with Class I Closing Appliances ...	NONE.							
Pump Room Entrances on Fore Deck Ships ...	40 FRONT & 30 AFT END		6' x 3' x 36 B.A. 4' x 3' x 32 ANG.	ABOUT 30" & 33" " 30"	BRACKETS AT TOP LUGS. BOTTOM. BRACKETS AT TOP	4'-6" x 2'-3" IN EACH ENTRANCE.	24"	7'-6" ✓

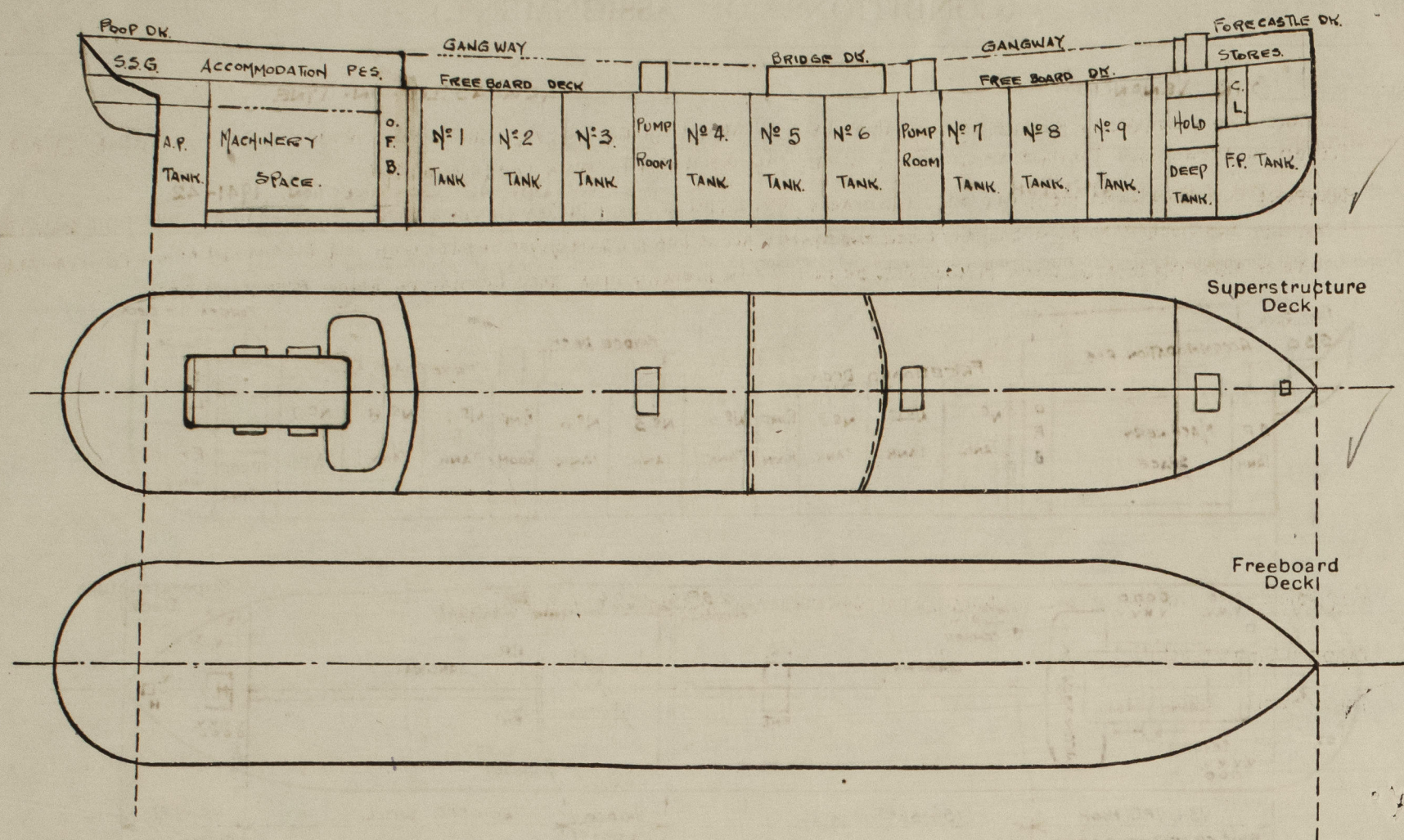
Particulars of Closing Appliances (state if capable of being manipulated from both sides).

Poop Bulkhead ...	2 HINGED STEEL W/T DOORS OPERATED FROM BOTH SIDES.	✓
Raised Quarter Deck Bulkhead ...	NONE.	✓
Bridge, After Bulkhead ...	1 HINGED STEEL W/T DOOR OPERATED FROM BOTH SIDES. 2 PORTABLE STEEL PLATES SECURED BY HOOK BOLTS SPACED ABOUT 14" TO 18" APART.	✓
Bridge, Forward Bulkhead ...	1 HINGED STEEL W/T DOOR OPERATED FROM BOTH SIDES.	✓
Forecastle Bulkhead ...	1 PORTABLE STEEL PLATE SECURED BY HOOK BOLTS SPACED ABOUT 14" APART. 2 HINGED STEEL W/T DOORS OPERATED FROM BOTH SIDES.	✓
Exposed Machinery Casings on Freeboard or Raised Quarter Decks ...	NONE	
Exposed Machinery Casings on Superstructure Decks ...	NO OPENINGS.	
Machinery Casings within Superstructures not fitted with Class I Closing Appliances ...	NONE.	
Pump Room Entrances on Fore Deck Ships ...	1 HINGED STEEL W/T DOOR IN EACH OPERATED FROM BOTH SIDES.	✓

No. 100090
SAN VENANCIO

Particulars of Gangway Cargo and Coaling Ports:—

NONE



ENGINE ROOM SKYLIGHT OF STEEL AND STRONGLY CONSTRUCTED
FUNNEL AND FIDDLY VENTS OF EFFICIENT CONSTRUCTION
FIDDLY GRATINGS PROTECTED BY HINGED STEEL COVERS SECURED BY BUTTERFLY SCREWS
ESCAPE HATCH (2) 18"x18" WITH HINGED STEEL COVERS SECURED BY DOUBLE HANDED CLIPS

NONE

Particulars of Ventilators in exposed positions on freeboard and superstructure decks :—

ON POOP DECK.

11 @ 5" DIA WITH GOOSENECK HEAD
29" ABOVE DECK TO OPENING.

1 @ 6" DIA. CAMMING 30" x 36" } COWL
1 @ 10" DIA. " 30" x 32" } HEADS.
2 @ 12" DIA. " 30" x 34" }

1 @ 4" DIA. WITH GOOSENECK HEAD
30" ABOVE DECK TO OPENING

ON BRIDGED DECK.

7 @ 6" DIA. COAMING 30" x 30" COWL VENTS.

ON. UPPER DECK.

4 @ 24" DIA. STRONGLY CONSTRUCTED VENTS.
TO PUMP ROOMS. COAMINGS 18'3" ABOVE DECK
EFFICIENTLY STAYED TO PUMP ROOM ENTRANCES. HOUSE
COWL HEADS

ON FORECASTLE DECK

2 @ 8" DIA. COAMINGS 36"x-30" } COWL
1 @ 12" DIA. " 36"x-34" }
6 @ 10" " " 36"x-32" } VERT

CLOSING APPLIANCES

24" VENTS FITTED WITH GASTIGHT FLAPS IN COAMINGS
OTHER COWL VENTS CORRUGATED CLOSED BY W/IT
SCREW DOWN PLUGS OR WOOD PLUGS, AND CANVAS
COVERS; AND GOOSENECK VENTS BY WOOD PLUGS
OR CANVAS COVERS

Particulars of Air Pipes in exposed positions on freeboard, raised quarter, or superstructure decks :—

ON POOP DECK.

1 @ 2" DIA. 5 @ 2½" DIA. 3 @ 3" DIA.
WITH GOOSENECK HEADS ABOUT 24"
ABOVE DECK TO OPENINGS.
2 @ 4" DIA. WITH MUSHROOM HEADS ABOUT
24" ABOVE DECK TO OPENING.

ON UPPER DECK.

2 @ 4" DIA. ABOUT 9'-3" ABOVE DECK TO OPENING
EFFICIENTLY STAYED.

2 @ 3" DIA. ABOUT 7'-0" ABOVE DECK TO OPENING.

AND 2 @ 3" DIA. ABOUT 7'-6" ABOVE DECK TO OPENING
EFFICIENTLY STAYED.

ON FORECASTLE DECK.

1 @ 4" DIA. WITH GOOSENECK HEAD
18" ABOVE DECK TO OPENING ✓

2 @ 4" DIA WITH MUSH ROOM HEADS
23" ABOVE DECK TO OPENING ✓

CLOSING APPLIANCES.

WIRE GAUZE COVERS FITTED AT MUSHROOM HEADS, WOOD PLUGS OR CANVAS COVERS
AT GOOSENECK HEADS

Particulars of Scuppers and Sanitary Discharge Pipes :—

SCUPPERS AND DISCHARGES FROM SPACES IN POOP LED TO STORM VALVES ON SHIP'S SIDE, SECOND AUTOMATIC NON-RETURN VALVES FITTED IN ACCESSIBLE POSITION ABOVE STORM VALVES. ALL DISCHARGE BELOW FREEBOARD DECK. ✓

SCUPPERS AND DISCHARGES FROM POOP DECK AND SPACES ABOVE LED TO STORM VALVES ON SHIP'S SIDE, ALL DISCHARGE ABOVE FREE BOARD DECK.
SCUPPERS AND DISCHARGES FROM BRIDGE DECK AND SPACES ABOVE LED TO STORM VALVES ON SHIP'S SIDE, ALL DISCHARGE ABOVE FREE BOARD DECK.
SCUPPERS FROM FORECASTLE DECK FITTED WITH SCREW CAP ON INBOARD END, EACH DISCHARGE BELOW FREE BOARD DECK.

Particulars of Side Scuttles:—

POOP SIDES. 10" AND 12" DIA. OF SUBSTANTIAL CONSTRUCTION AND FITTED WITH DEAD LIGHTS

BRIDGE SIDES 8" " " " " " " "

FORECASTLE SIDES 8" " " " " " " "

Vertical distance of Sill of lowest Side Scuttle above top of keel NO SIDE SCUTTLES FITTED BELOW FREE BOARD DECK.



Particulars of Guard Rails :—

AT POOR BRIDGE, 4 FORECASTLE DECKS. 3'6" HIGH, 3 RAILS, STANCHIONS SPACED ABOUT 4'-9" APART

AT FREEBOARD DECK OPEN RAILS " " " " " " " " " "
(SEE SKETCH BELOW) BULWARKS 3'-6" HIGH - 30THICK 7" B.A. RAIL BAR, 6" B.P. STAYS ABOUT 6'-0" APART
SPECIALLY STAYED ADJACENT TO ERECTION ENDS.

Particulars of Gangways, Lifelines, etc.:— HEIGHT 7'-6" WIDTH AT TOP 3'-3" AND AT BOTTOM 4'-9". SUPPORTS 4" x 4" x 40° ANGLES SPACED ABOUT 7'-6" APART, AND EACH WITH 3" x 3" x 40° ANGLE DIAGONAL TIES AND BRACKETS TOP AND BOTTOM. SIDE DIAGONALS 3 1/2" x 3 1/2" x 40° ANGLE FITTED IN ALTERNATE BAYS AND BRACKETED TOP AND BOTTOM. SIDES OF PLATFORM OF 5" x 3" x 40° B.A. : PLATFORM OF WOOD 3" THICK : GUARD STANCHIONS 3'-6" HIGH AND SPACED ABOUT 5'-0" APART, 2 RAILS IN HEIGHT.

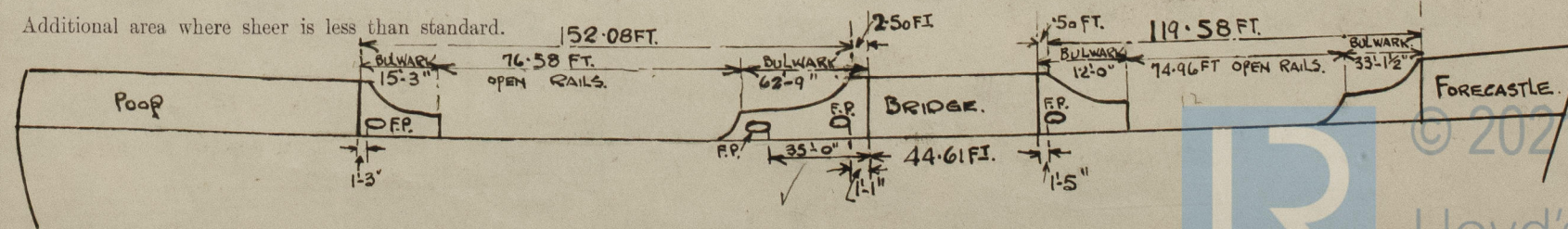
Particulars of Freeing Arrangements.

	Length of Bulwark	Height of Bulwark	Size of Freeing Ports	Number each side	Area each side	Rule area each side
After Well	78'-0" 152'-08'	3'-6"	 3'-0" x 1'-3"	3	10.24 SQ.FT. ✓ AND OPEN RAILS	TANKER.
Forward Well	45'-12" 119'-58'	3'-6"	 3'-0" x 1'-3"	1	3.41 SQ.FT. AND OPEN RAILS. ✓	TANKER.

State position of each freeing port } After Well :— AS PER SKETCH. } 13" ABOVE DECK
(F. and A. position and height above deck edge) } Forward Well :— } BARS VERTICAL IN EACH.

State whether the freeing ports are fitted with shutters, bars, or rails, and give particulars of such:— **BARs. 3 VERTICAL IN EACH.**

Additional area where sheer is less than standard.



PARTICULARS OF PROTECTION TO OPENINGS, ETC.

HATCHWAYS ON FREEBOARD AND SUPERSTRUCTURE DECKS.									
ON F.B. DECK. ON SUPERSTRUCTURE DECK									
Description of Hatchway	CARGO TANKS.	COFFERDAMS	OIL FUEL BUNKERS.	ON POOP DK. To STORES	ON POOP DK. To ROPE STORE SPACE.	ON FORECASTLE DECK	ON F.B. DECK.
Dimensions of Hatchway	4'6" x 3'6" (27 OFF)	FEA. 1'6" x 2'0" (6 OFF)	1'6" x 2'0" (2 OFF)	3'3" x 2'6" (1 OFF)	1'3" DIA. (1 OFF)	8'0" x 10'0" (1 OFF)	2'6" x 2'6" (1 OFF)
COAMINGS	Height above Deck	...	30	7"	7"	16 1/2"	6" x 3" x 38 BULB ANGLE	34"	9" x 3 1/2" x 42 BULB ANGLE
	Thickness	Sides	40	40"	40"	40"			2'6" x 2'6" (1 OFF)
	Stiffeners	Ends							9" x 3 1/2" x 44 BULB ANGLE
	Brackets, Stays	...							
HATCH BEAMS	Number	...	WITH .50 THK	WITH .50 THK	WITH .50 THK	WITH .40 THK	WITH .40 THK	WITH .40 THK	WITH .40 THK
	Spacing	...	HINGED STEEL	BOLTED STEEL	BOLTED STEEL	HINGED STEEL	HINGED STEEL	HINGED STEEL	HINGED STEEL
	Scantling and Sketch	...	COVER MADE W.T. BY GREASY HEMP PACKING AND BUTTERFLY SCREWS.	COVER, BOLTS 3/4" DIA. SPACED 3 3/4" APART	COVER, BOLTS 3/4" DIA. SPACED 3 3/4" APART	MADE W.T. BY GREASY HEMP PACKING AND 8 BUTTERFLY SCREWS.	COVER MADE W.T. BY GREASY HEMP PACKING AND 4 BUTTERFLY SCREWS.	COVER MADE W.T. BY GREASY HEMP PACKING AND 4 BUTTERFLY SCREWS.	COVER MADE W.T. BY GREASY HEMP PACKING AND 4 BUTTERFLY SCREWS.
	Bearing Surface	...	14						
FORE AND AFTERS	Number	...							
	Spacing	...							
	Unsupported Lengths	...							
	Scantling* and Sketch	...							
HATCH COVERS	Material	...							
	Thickness	...							
	How fitted	...							
	Bearing Surface	...							
Spacing of Cleats							
Number of Tarpaulins							

*Are wood fore and afters steel shod at all bearing surfaces ?

Are battens and wedges efficient and in good condition ?

Are tarpaulins in good condition and in accordance with rule requirements ?

Are lashings provided in accordance with rule requirements ?

Particulars of any special features :—

Endorsement at first survey and at surveys for renewal of Certificate :—

The fittings and appliances are in accordance with the particulars shown on this form (or as now modified) and are in good condition.



© 2021

Lloyd's Register Foundation