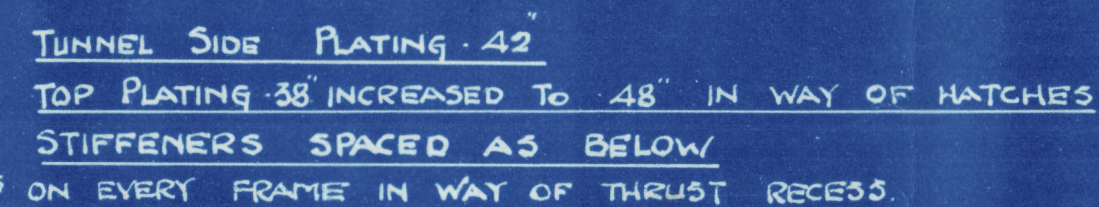
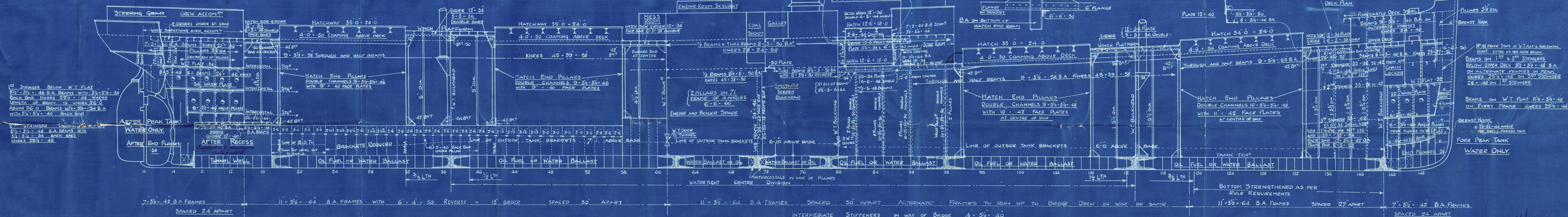
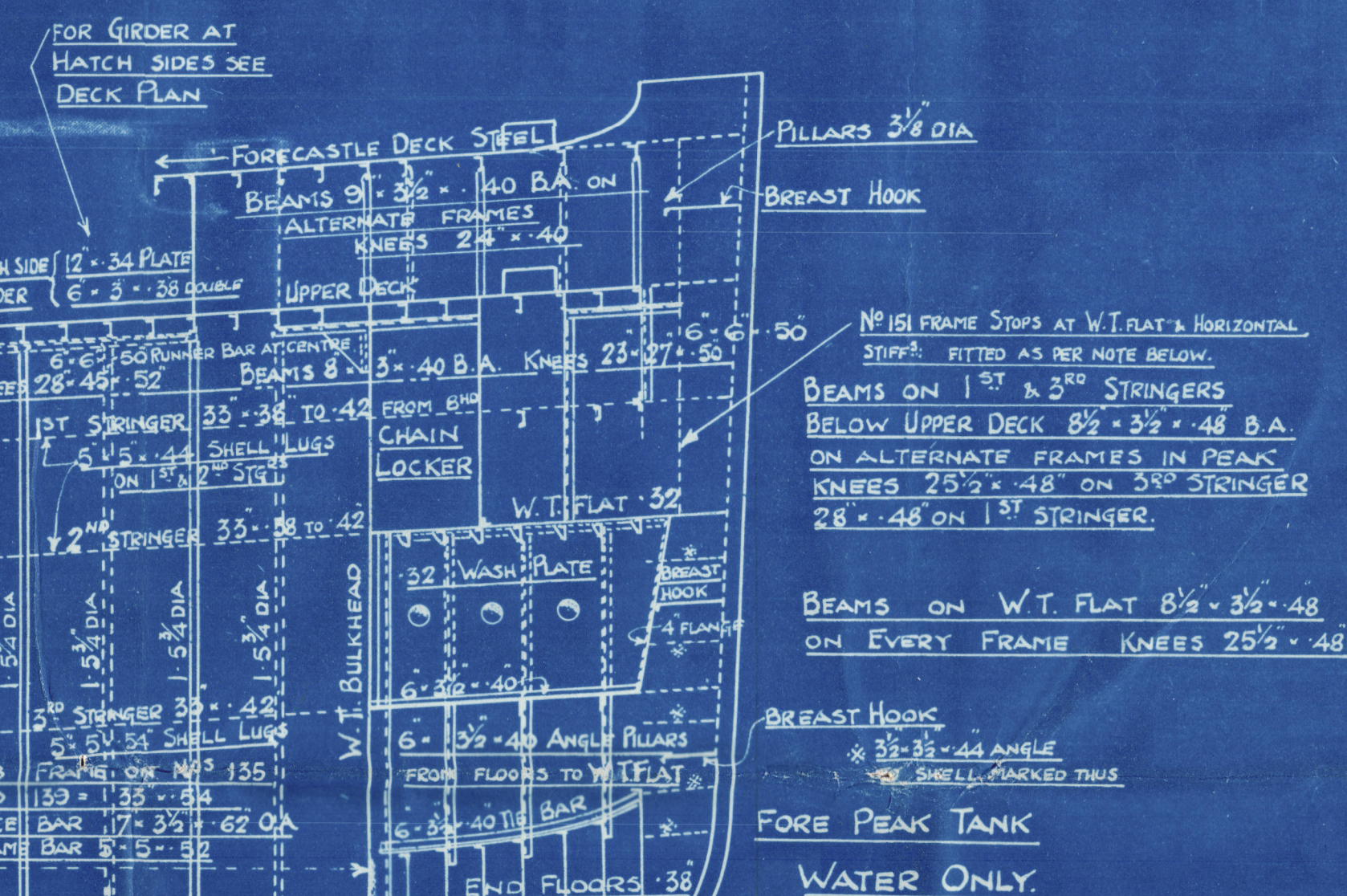
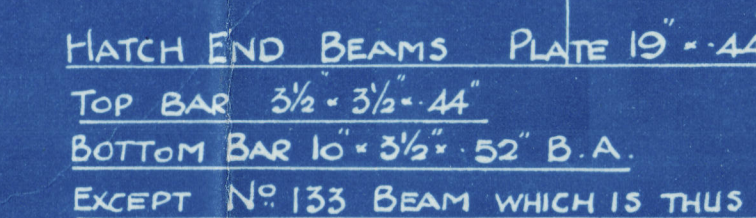
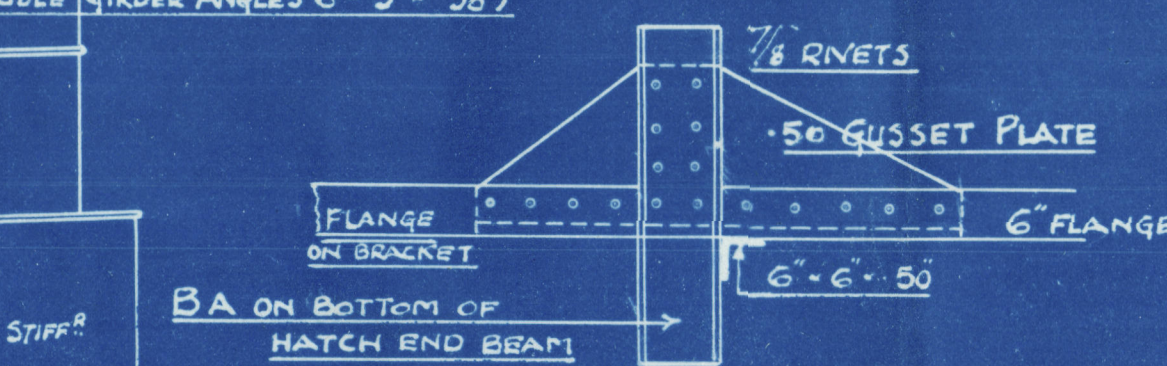


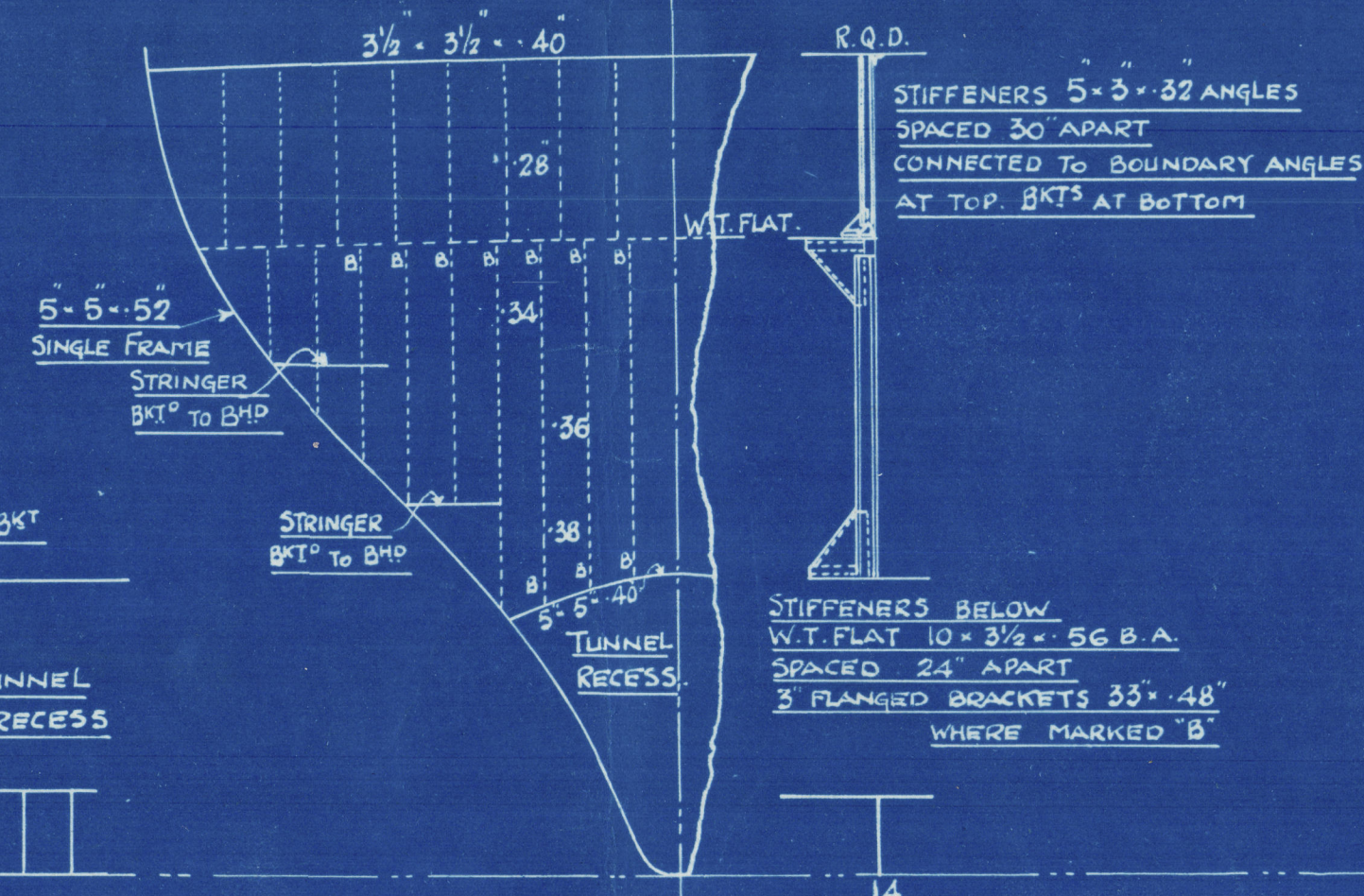
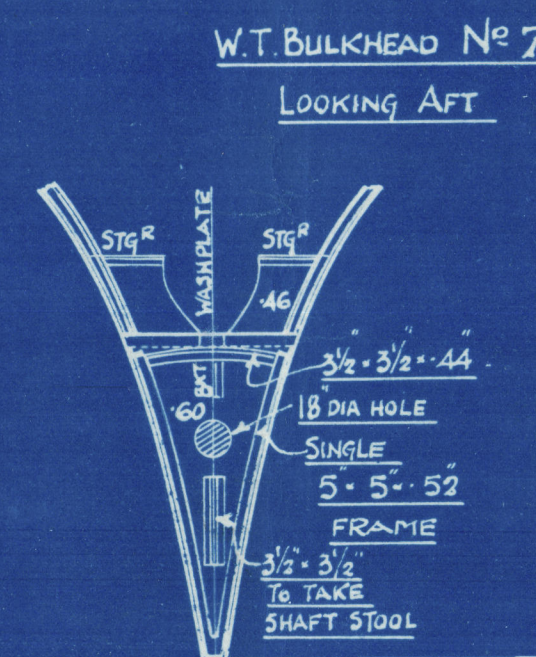
SECTION SHOWING MATCH WEBS


$$364' \cdot 0 \text{ L.B.P.} \times 52' \cdot 6 \text{ BTH MLD} = 26' \cdot 8 \text{ D.MLD}$$

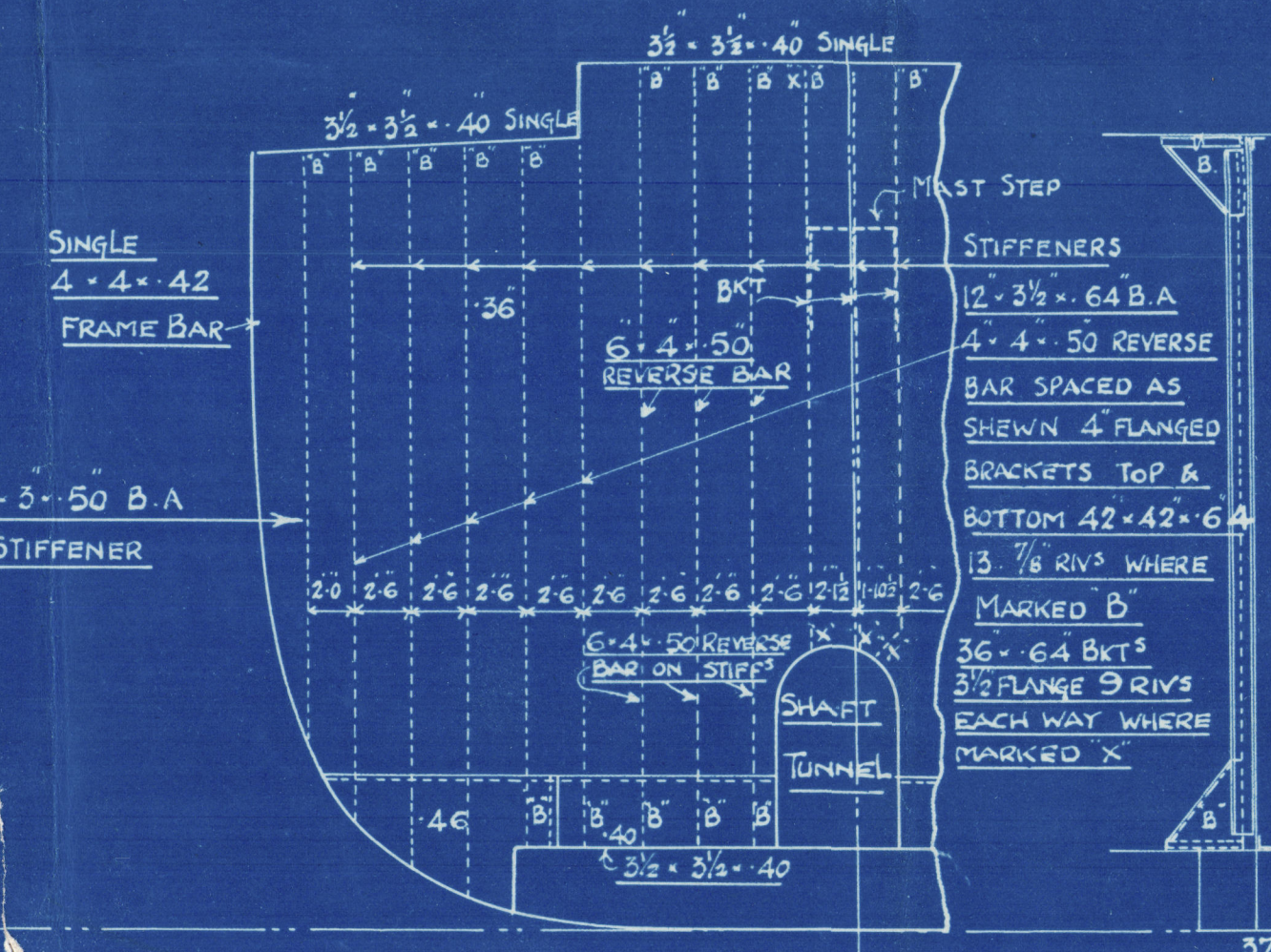
363-41 L.W.L.
SCALE $\frac{1}{8}'' = 1\text{FOOT}$
100 A.I. LLOYDS



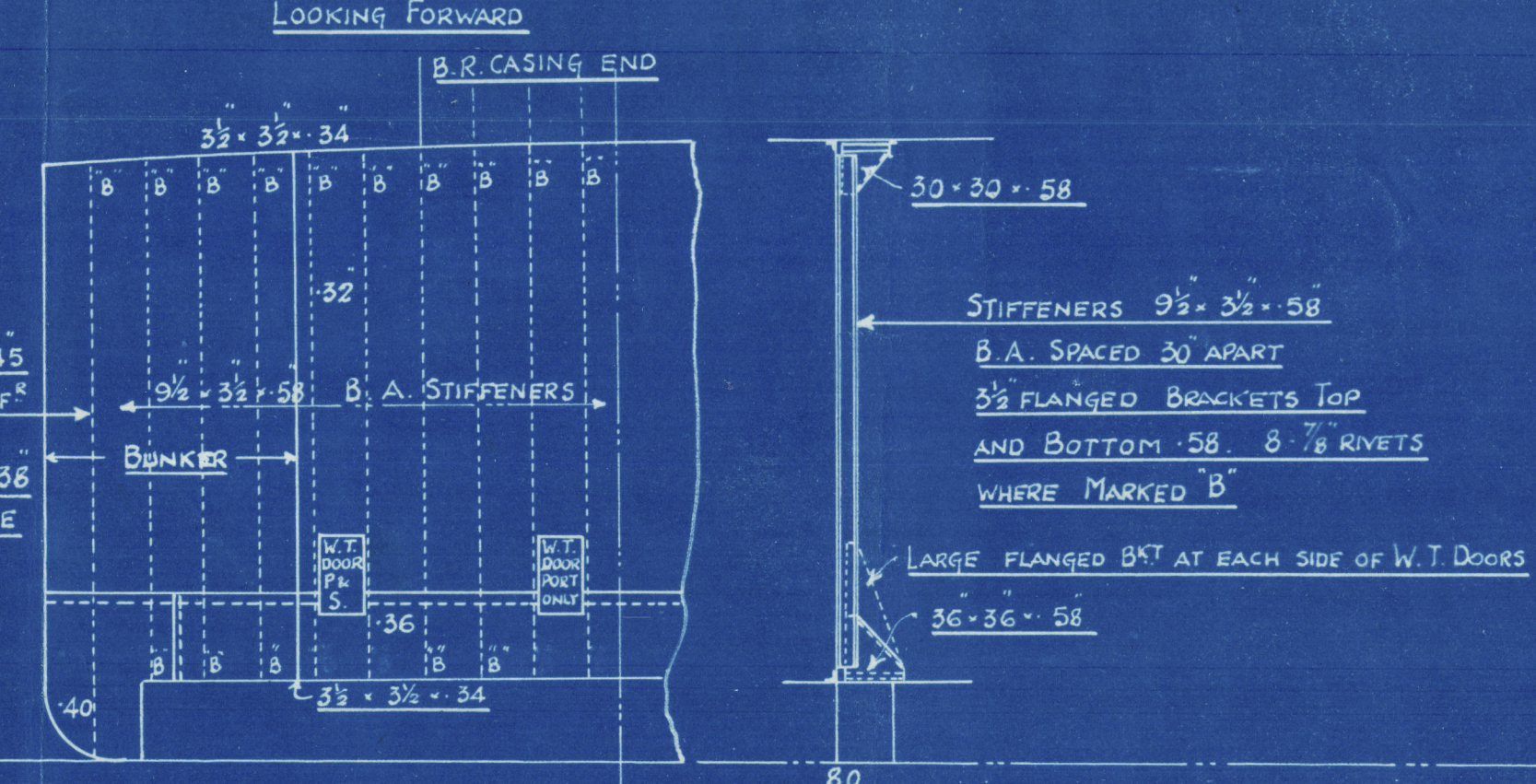
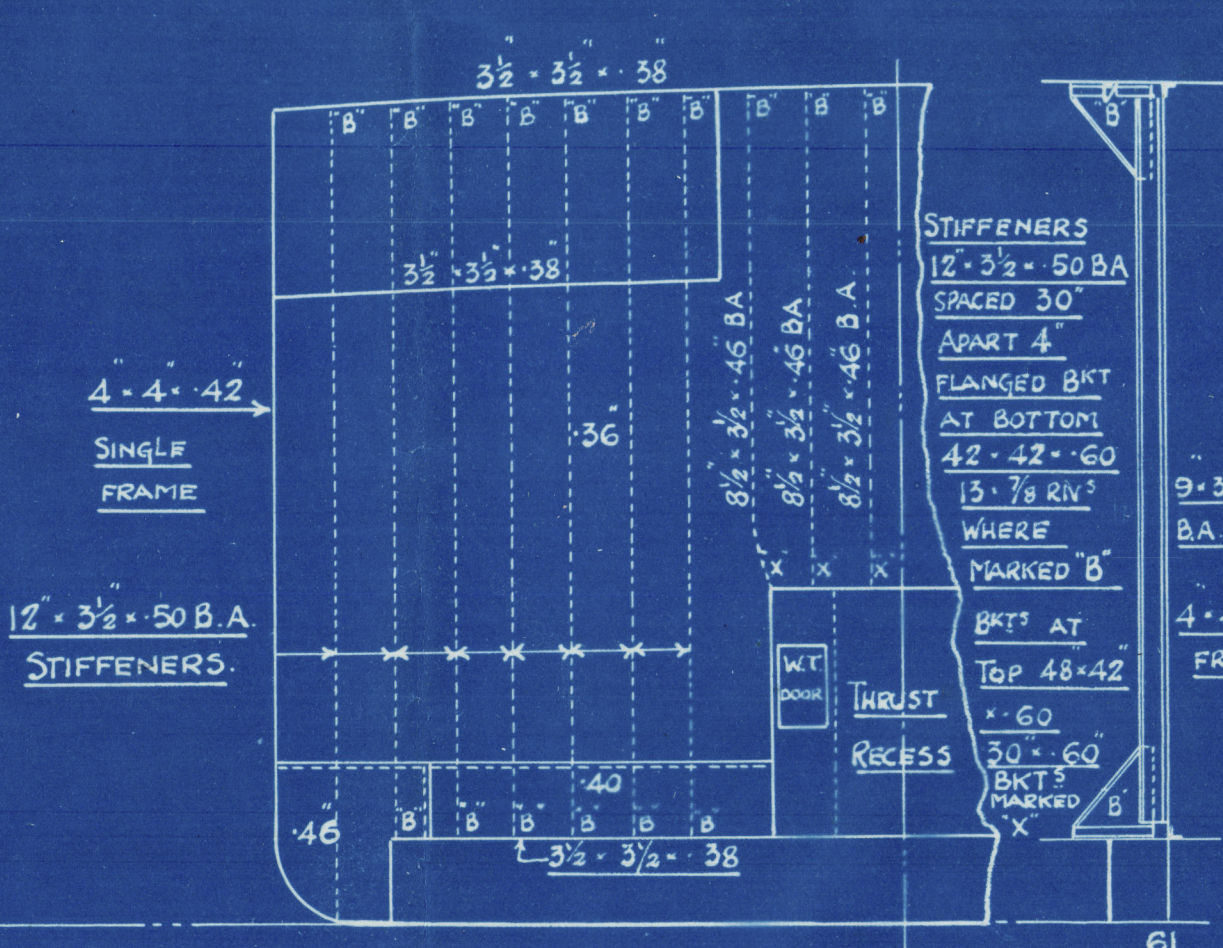
W.T. BULKHEAD No 14
LOOKING AFT



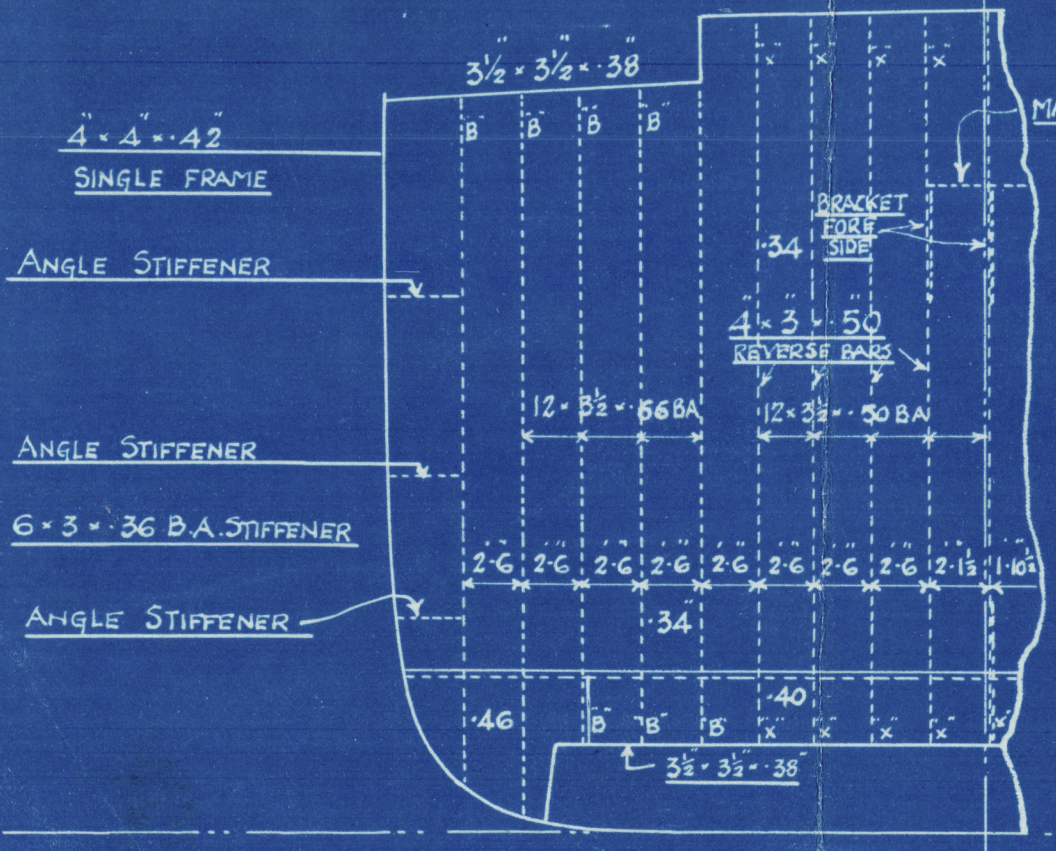
No 37 W.T. BULKHEAD
LOOKING AFT



No 61 W.T. BULKHEAD
LOOKING AFT



No 113 W.T. BULKHEAD
LOOKING FORWARD



No 143 W. T. BULKHEAD

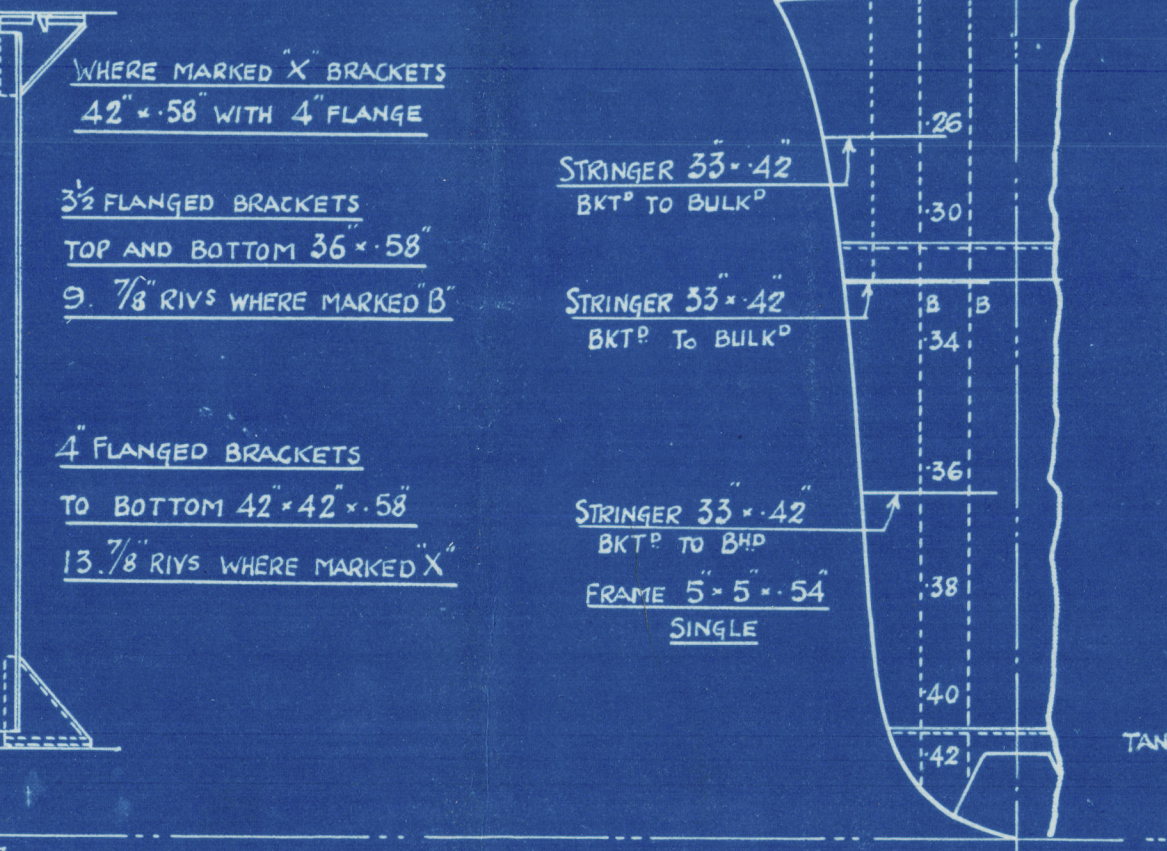


Diagram illustrating the stiffener arrangement above and below the waterline (W.T. FLAT).

Stiffeners Above W.T. FLAT:

- 6 x 3 - 40 B ANGLES 24" APART
- ONLY BRACKETS AT BOTTOM ONLY
- CONNECTED TO BOUNDARY BAR AT TOP

W.T. FLAT

WASH PLATE

Stiffeners Below W.T. FLAT:

- 12 x 3 1/2 - 60 BA 24" APART
- 3 FLANGED BRACKETS AT TOP
- 3 1/2 x 60 = 8 1/2 RIVS WHERE MARKED "B"

S.S. 544.

Amended Profile

SUNDERLAND

J. L. THOMPSON & SONS LTD

S.S. No 544

AMENDED PROFILE
n/n "Bushrainger"
S.S. STAKESBY

SUNDERLAND RPT. No 28 & 25.



© 2020

Lloyd's Register
Foundation

005524-005576-0156