

12-1-15

# STEEL SINGLE SCREW MOTOR COASTER, No 1268 4-1269

89' 0" BP x 19' 0" MLD x 10' 0" MLD

Scale  $\frac{3}{4}$ " = 1 foot.

Sections at Well, Raised Quarter & Forecastle Decks

Plan No 1217.

To be classed Lloyds 100 A Freeboard obtained from Lloyds.

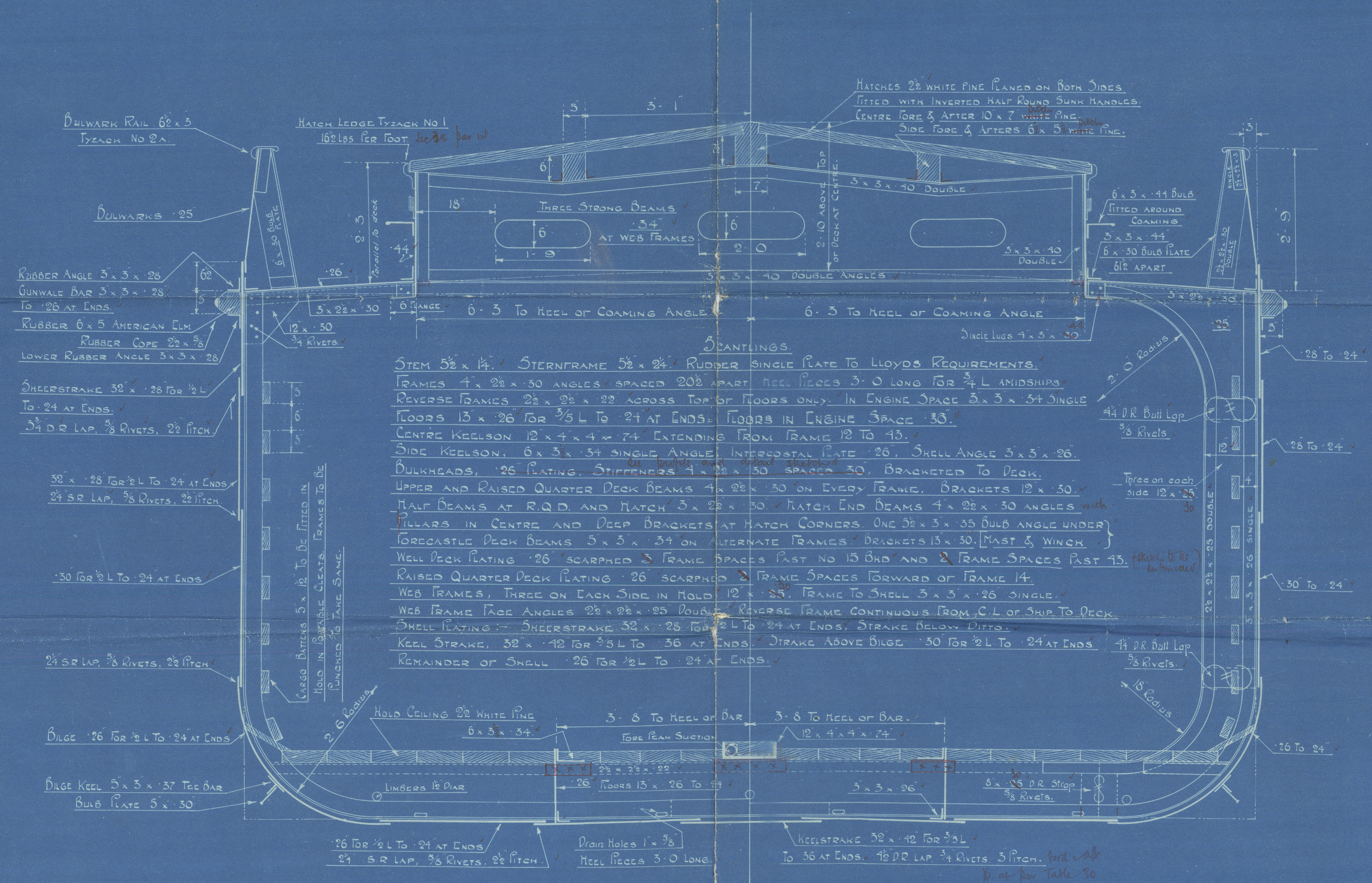
Sections at Web and Ordinary Frames at Well Deck

Scale  $\frac{3}{4}$ " = 1 foot.

NOTED  
FOR THE PROPERTY SHIPBUILDING  
ENGINEERING AND ROYAL DOCK CO. LIMITED  
J. H. BULLOCK  
10, CHANCERY LANE, LONDON, E.C. 4

Lloyds Numerals:-

19 + 10 = 29 TRANSVERSE NO.  
129 x 89 & 2531 LONGITUDINAL NO.

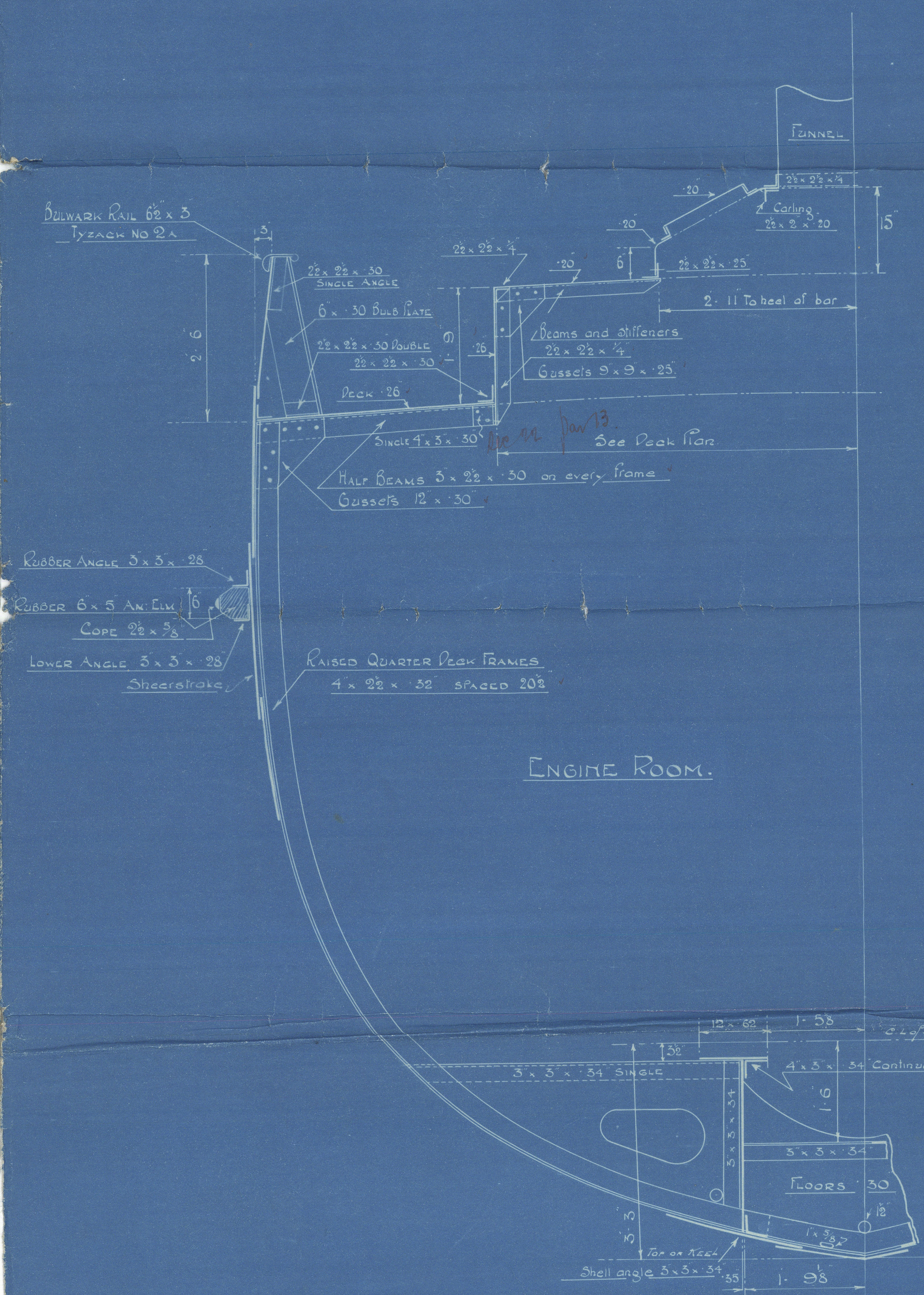


SCANTLINGS.  
STEM  $5\frac{1}{2}$  x 14". STERNFRAME  $5\frac{1}{2}$  x 24". RUDDER SINGLE PLATE TO LLOYDS REQUIREMENTS.  
FRAMES 4 x 28 x 30 ANGLES SPACED 20" APART. KEEL PLATES 3' 0" LONG FOR  $\frac{3}{4}$  L AMIDSHIPS.  
REVERSE FRAMES 28 x 28 x 22 ACROSS TOP OF FLOORS ONLY. IN ENGINE SPACE 3 x 3 x 34 SINGLE  
FLOORS 15 x 26 FOR  $\frac{3}{4}$  L TO 24 AT ENDS. FLOORS IN ENGINE SPACE 30".  
CENTRE KEELSON 12 x 4 x 4 w 74" EXTENDING FROM FRAME 12 TO 15.  
SIDE KEELSON 6 x 3 x 34 SINGLE ANGLE INTERSTAY PLATE 26". SHELL ANGLE 5 x 5 x 26".  
BULKHEADS 26" PLATING STIFFENERS 12 x 28 x 30 SPACED 30". BRACKETED TO DECK.  
UPPER AND RAISED QUARTER DECK BEAMS 4 x 28 x 30 ON EVERY FRAME. BRACKETS 12 x 30".  
HALF BEAMS AT R.Q.D. AND HATCH 3 x 28 x 30. HATCH END BEAMS 4 x 28 x 30 ANGLES.  
PILLARS IN CENTRE AND DEEP BRACKETS AT HATCH CORNERS. ONE 38 x 3 x 35 BULB ANGLE UNDER.  
FORECASTLE DECK BEAMS 5 x 5 x 34 ON ALTERNATE FRAMES. BRACKETS 13 x 30. FAST & WINCH.  
WELL DECK PLATING 26" SCARPHED 2" FRAME SPACES FORWARD OF FRAME 14.  
WEB FRAMES 12 x 28 x 30 IN HOLD. 12 x 28" FRAME TO SHELL 3 x 3 x 26 SINGLE.  
RAISED QUARTER DECK PLATING 26" SCARPHED 2" FRAME SPACES FORWARD OF FRAME 14.  
WEB FRAMES 12 x 28 x 30 IN HOLD. 12 x 28" FRAME TO SHELL 3 x 3 x 26 SINGLE.  
SHELL PLATING SHEERSTRAKE 32 x 28 FOR  $\frac{3}{4}$  L TO 24 AT ENDS. STRAKE BELOW DECK.  
KEEL STRAKE 32 x 42 FOR  $\frac{3}{4}$  L TO 36 AT ENDS. STRAKE ABOVE BULGE 30 FOR  $\frac{3}{4}$  L TO 24 AT ENDS.  
REMAINDER OF SHELL 26 FOR  $\frac{3}{4}$  L TO 24 AT ENDS.

HENRIE FORRETT SHIPBUILDING,  
ENGINEERING AND ROYAL DOCK CO. LIMITED.  
J. H. BULLOCK

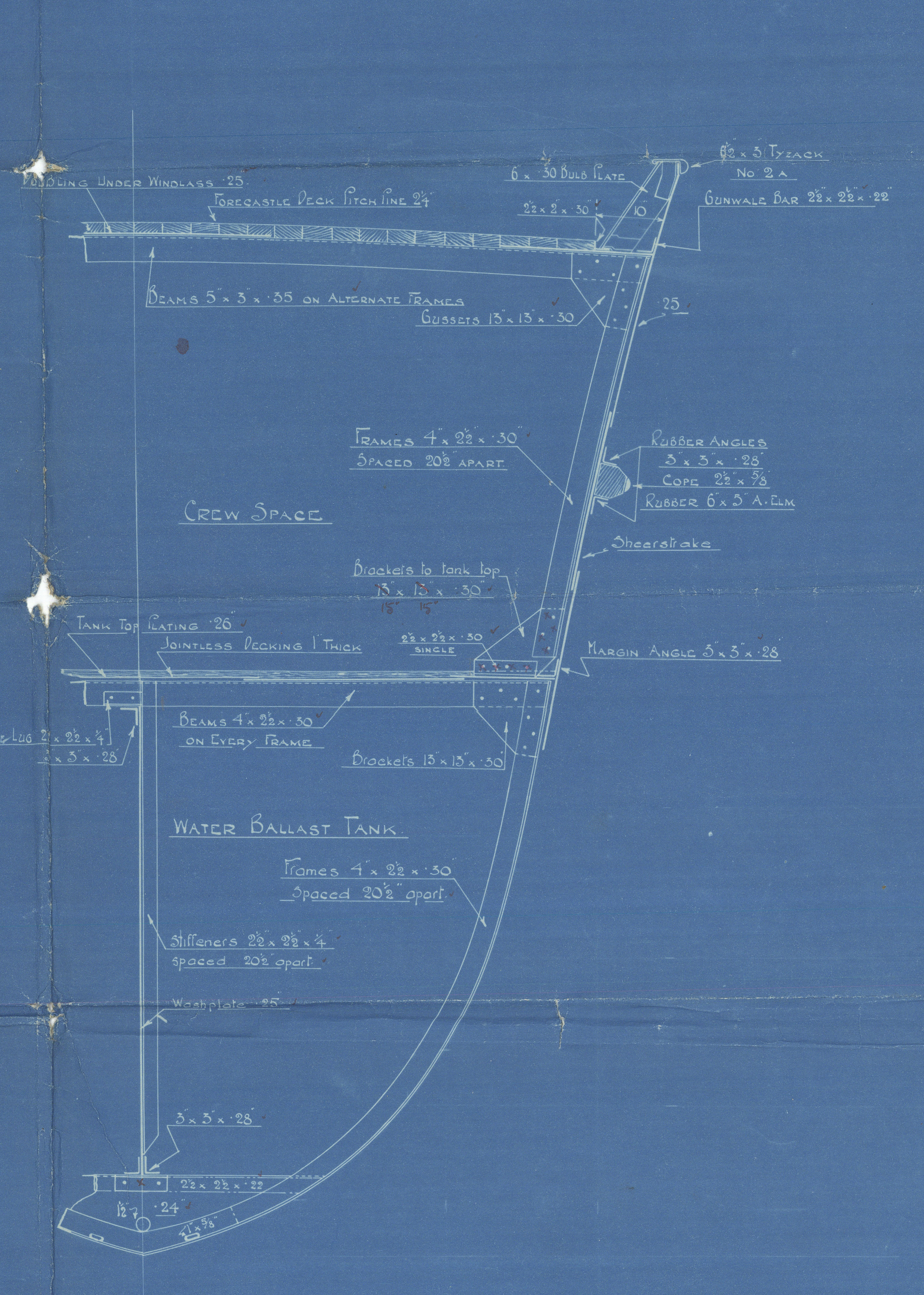
Section at Raised Quarter Deck

Scale  $\frac{3}{4}$ " = 1 foot.



Section at Raised Forecastle Deck

Scale  $\frac{3}{4}$ " = 1 foot.







Rennie Farrelts

1268-9

Mias hip Section

Ss "Bristo" (1268)

Lon 78834. DS.48

Annex 1.

3/11  
~~D. 48 B~~

