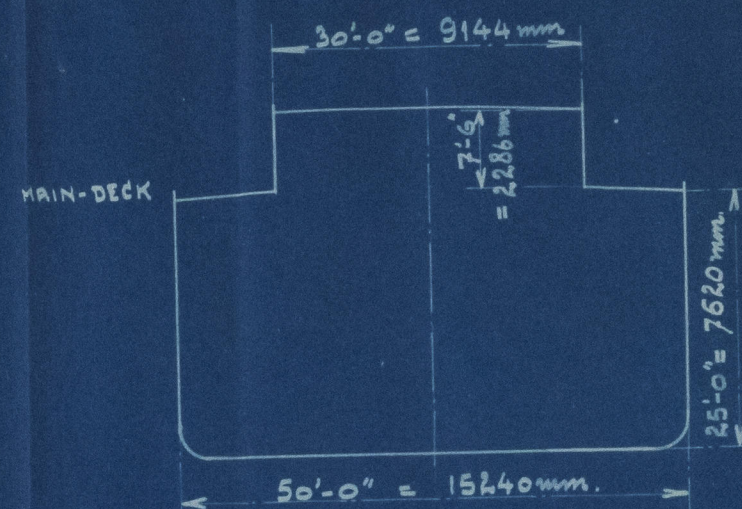
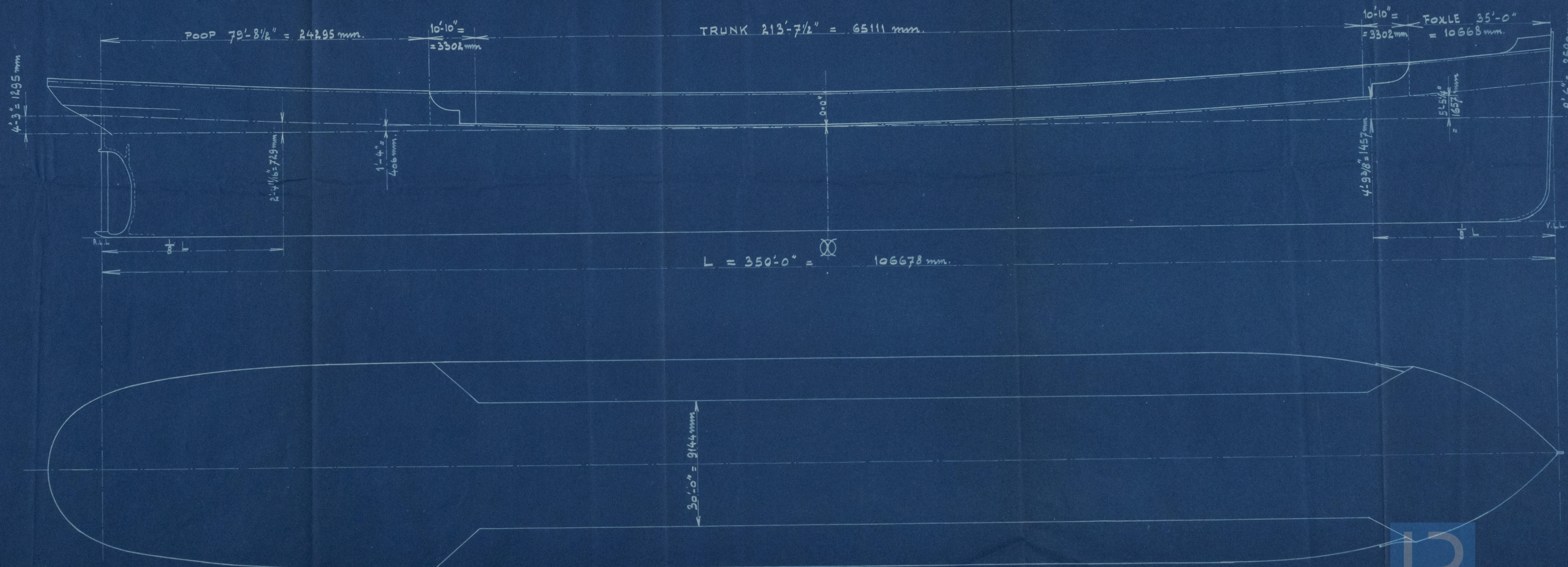


# PROPOSED PLAN MOTOR OIL TANKER FOR VAN OMMEREN'S SCHEEPVAART BEDRIJF.

SCALE 1=200.



| PARTICULARS.                |                      |
|-----------------------------|----------------------|
| LENGTH BETW. RP.            | 350'-0" = 106678 mm. |
| BREADTH MOULDED.            | 50'-0" = 15240 "     |
| DEPTH MOULDED TO MAIN-DECK. | 25'-0" = 7620 "      |
| WIDTH OF TRUNK.             | 30'-0" = 9144 "      |
| HEIGHT " "                  | 7'-6" = 2286 "       |
| " " FOXLE                   | 7'-6" = 2286 "       |
| " " POOP.                   | 7'-6" = 2286 "       |
| ROUND OF BEAM.              | 12 1/2" = 317 "      |
| COEFFICIENT OF FINENESS     | .79.                 |





Maatschappij Lijenoord.

Sheer Plan

with

Freeboard Particulars  
for

350' Oil Tanker.



© 2021

Lloyd's Register

005695-005708-0132 Foundation