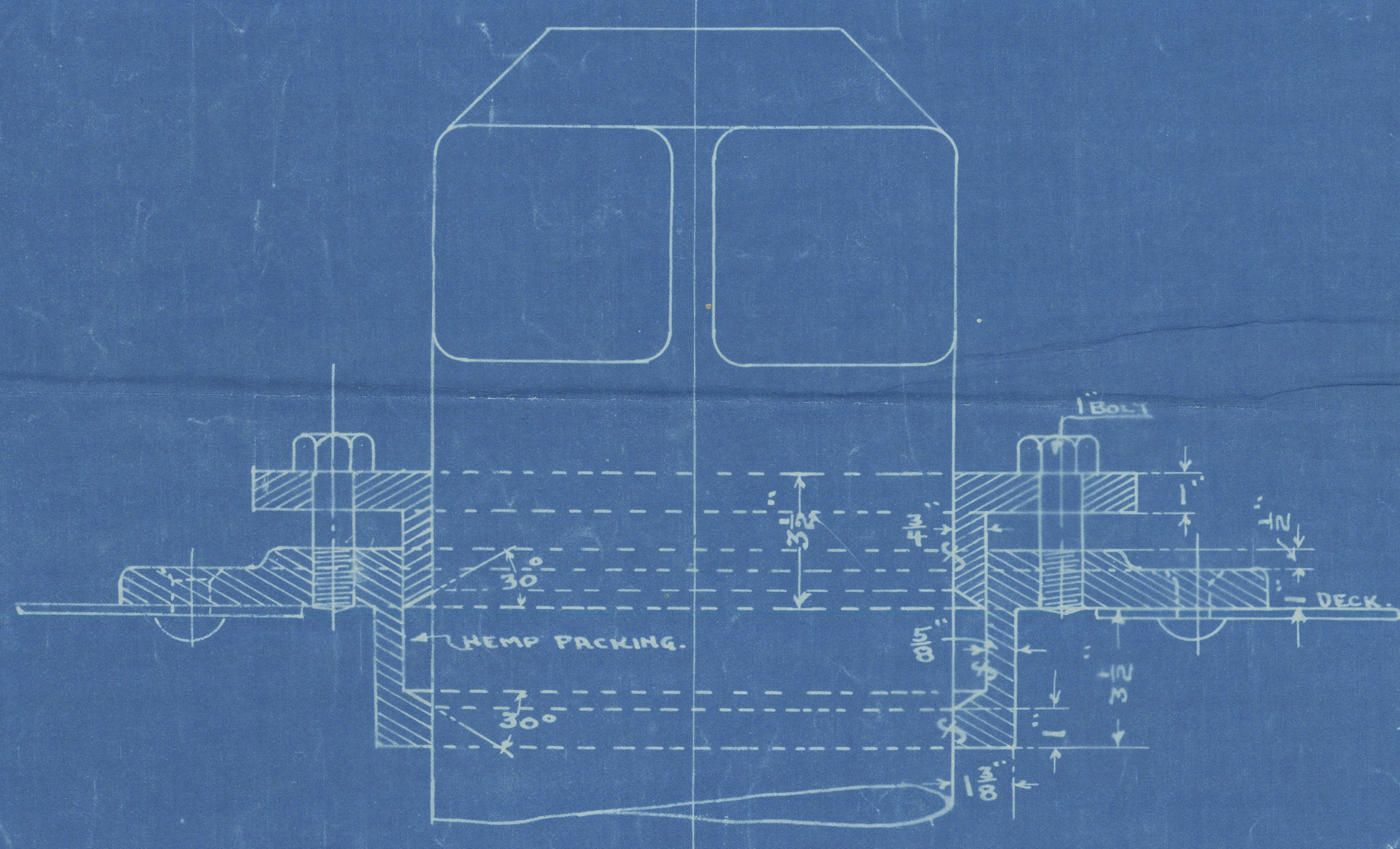
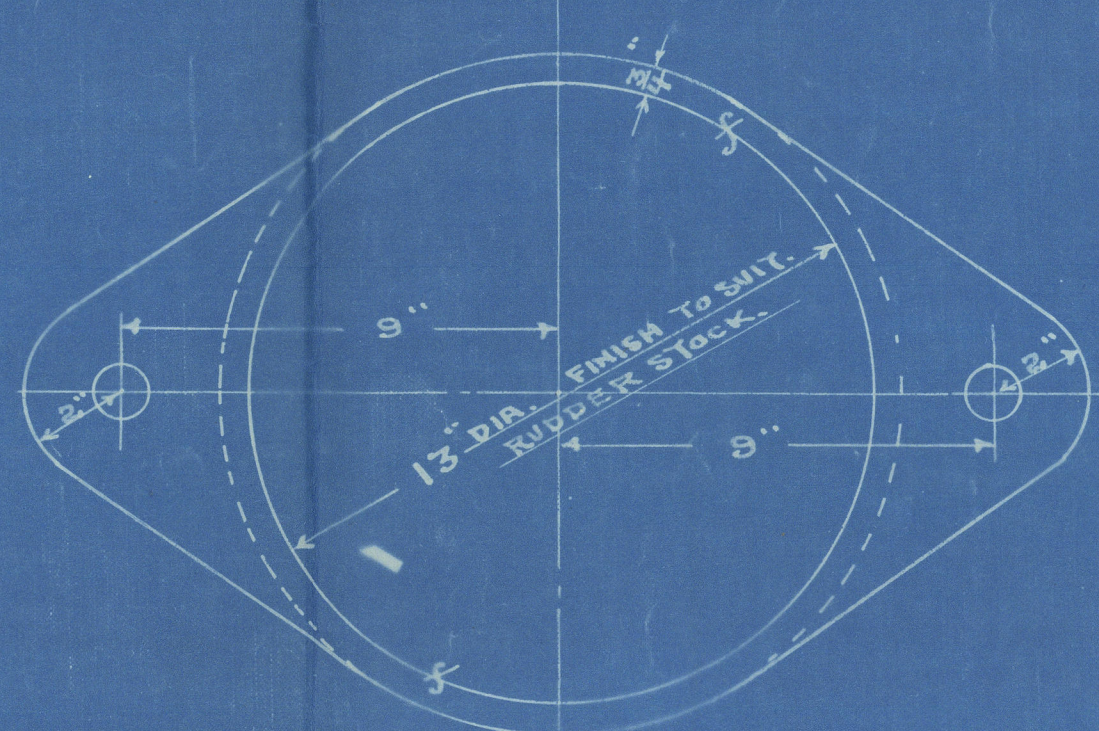


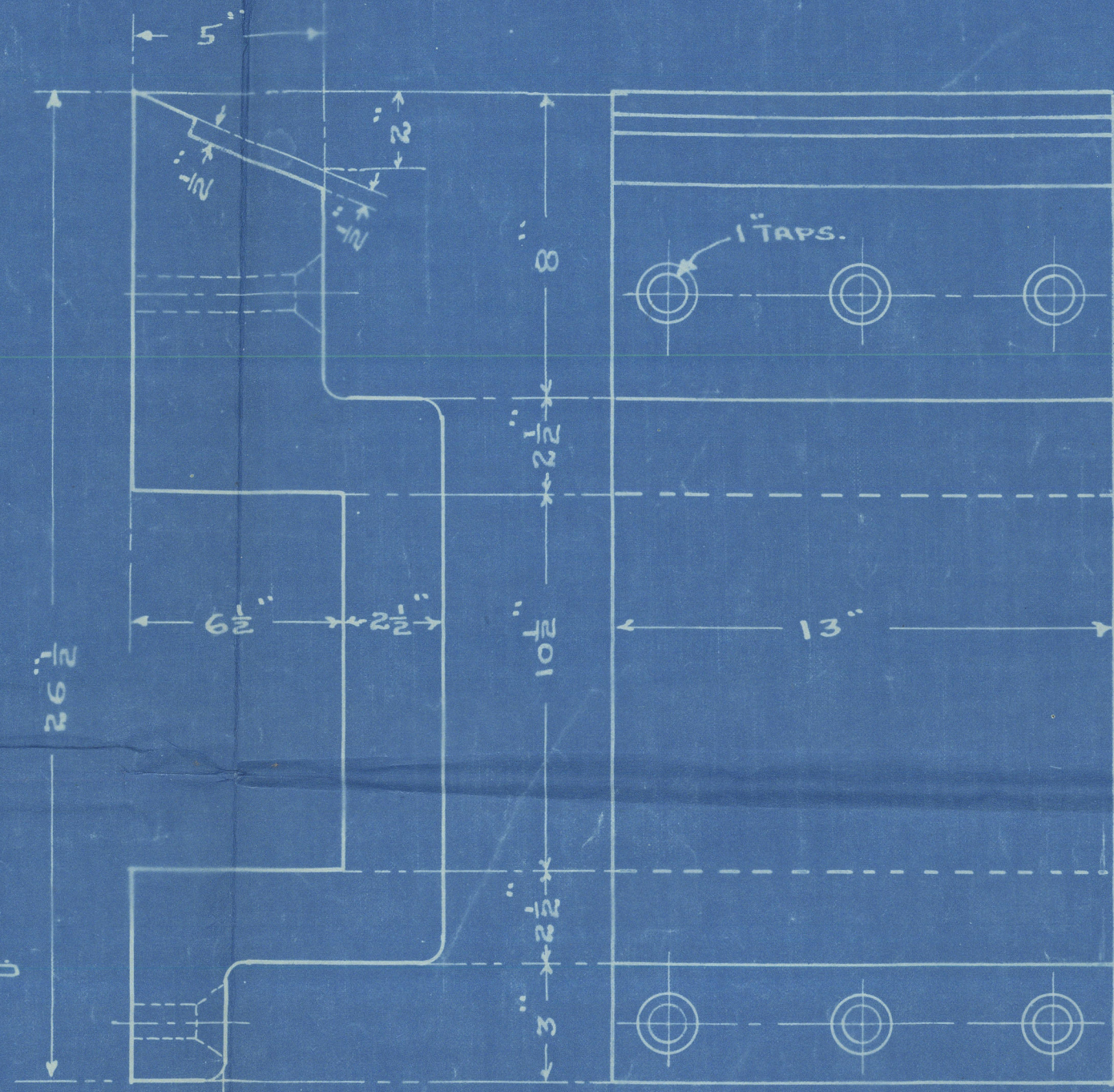
DETAIL OF BOX.



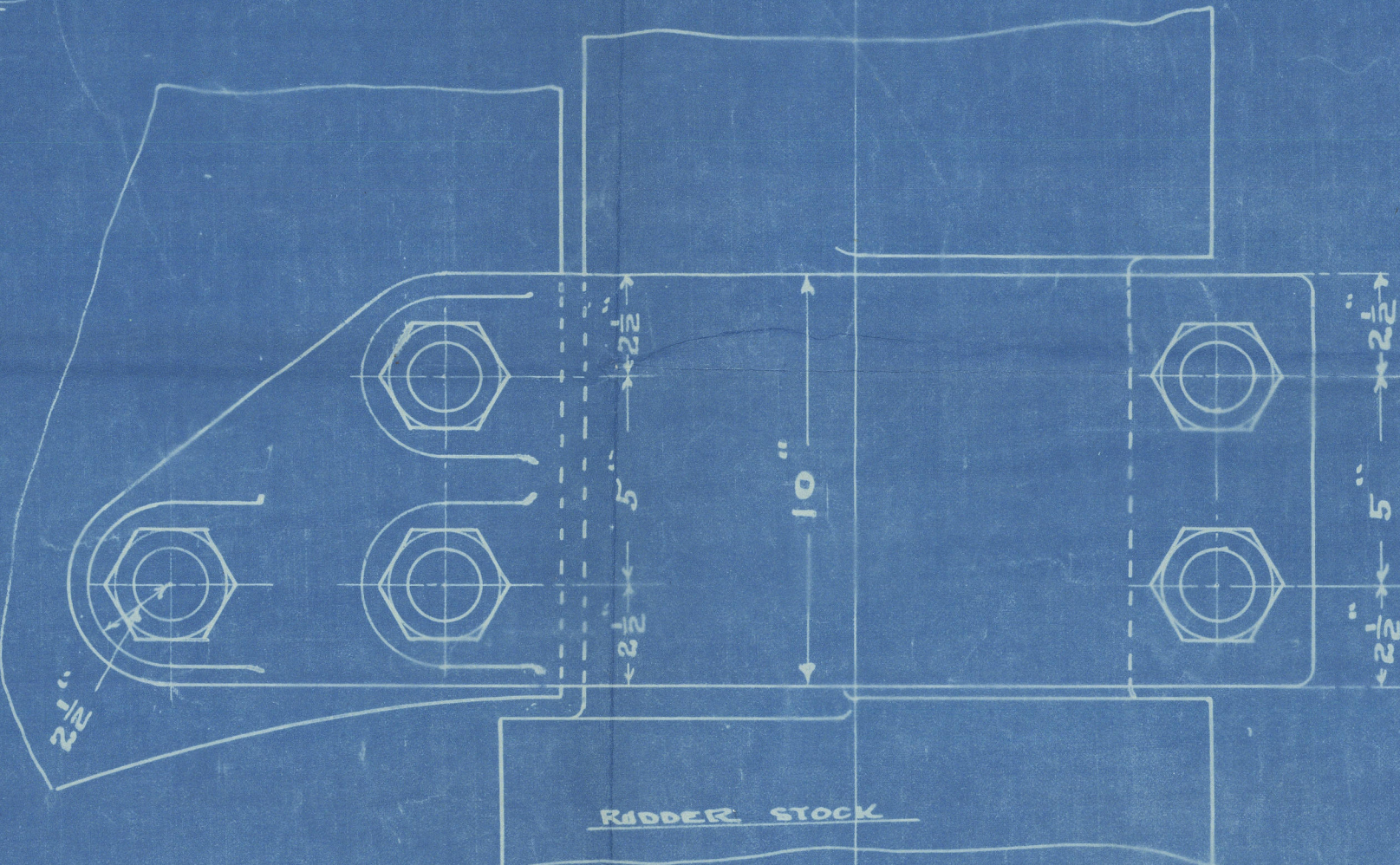
DETAIL OF DECK STUFFING BOX.
ONE OFF. CAST IRON.



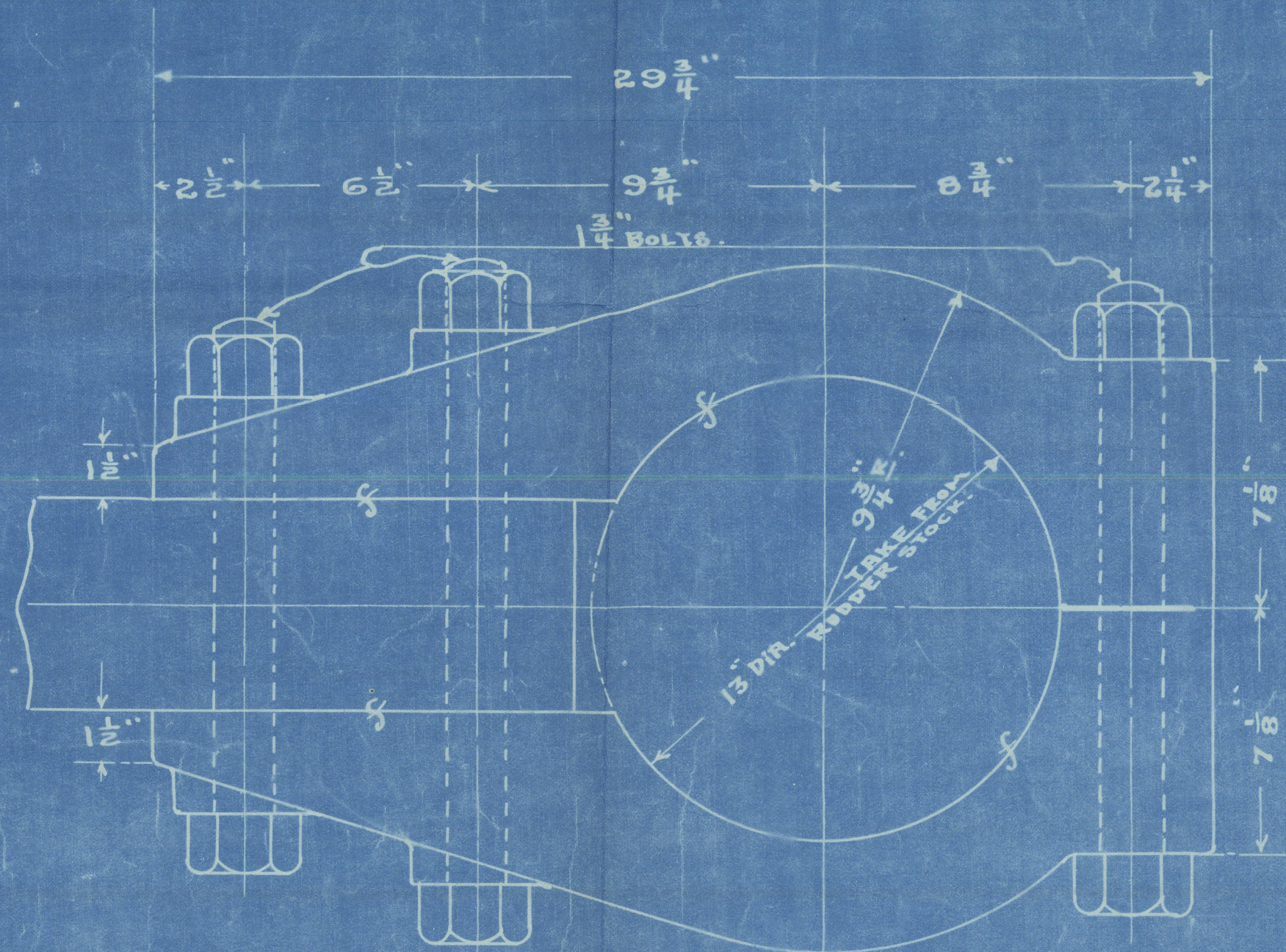
STUFFING BOX ISLAND.



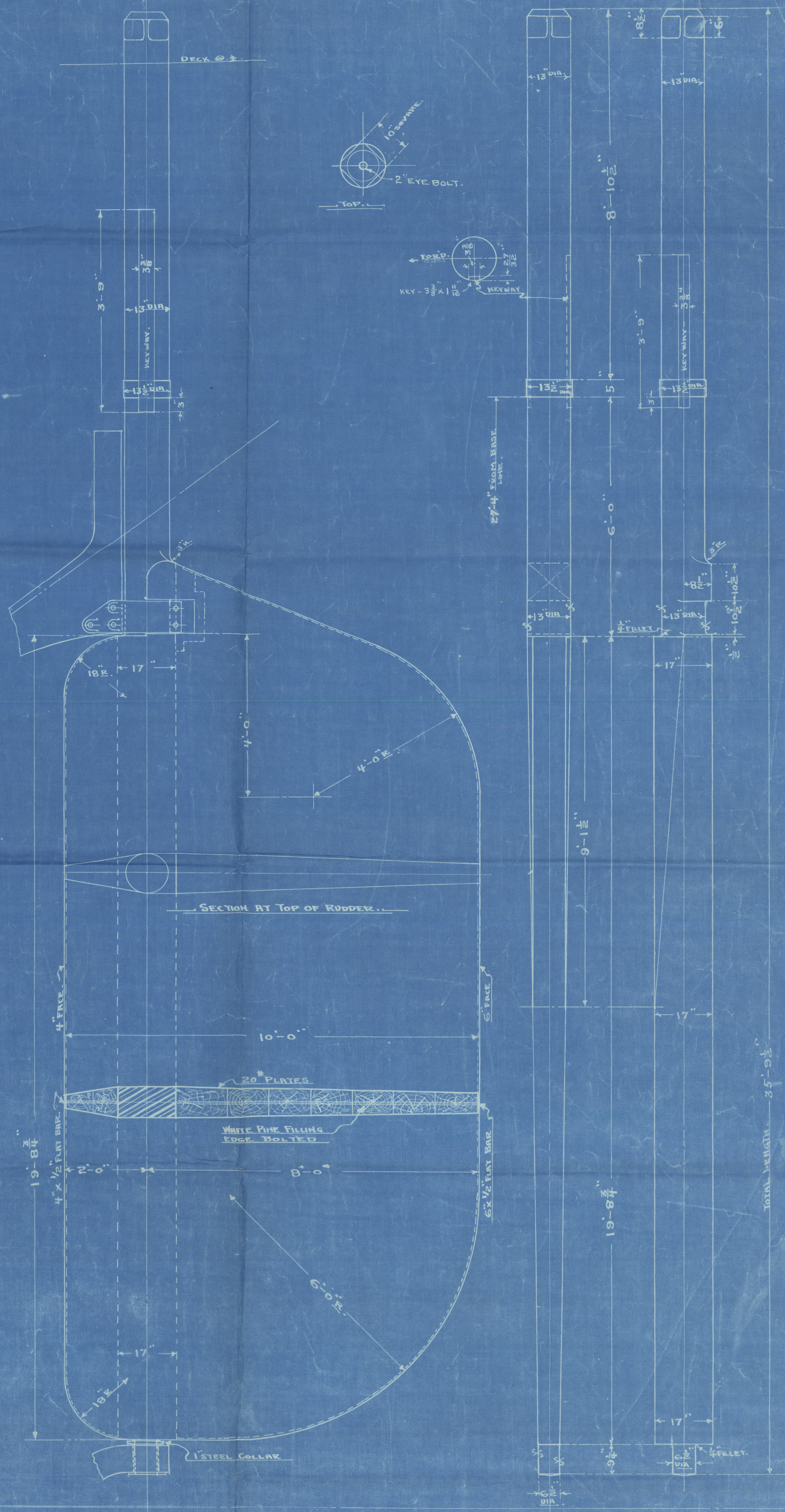
DETAIL OF RUDDER BAND BRIDGE.
ONE OFF. CAST IRON.



RUDDER STOCK.



DETAIL OF RUDDER STOCK LOCK.
ONE WANTED. CAST STEEL.



SECTION AT TOP OF RUDDER.

DETAIL OF RUDDER.

RUDDER FORGING.

DATE	REVISION
MAY 25	KEYWAY, RUDDER - 53

STR. No. 137. DRAW. No. 137.
RUDDER FORGING & DETAIL.
FIRST No. 137. DRAWN BY: [Signature]
DATE ISSUED: [Blank] TRACED BY: [Blank]
SCALE: 3/4"=1'-0" CHECKED BY: [Blank]
APPROVED BY: [Signature] JES. 2/15/16
THE TOLEDO ENGINEERING CO.
TOLEDO, OHIO

Toledo S.B. Co.

Nº 137

Rudder.

"Horace S. Wilkinson"

Det. Report Nº 43.



© 2021

Lloyd's Register
Foundation

006028-006038-0189

Mr Evans

006028-006038-0189



© 2021

Lloyd's Register
Foundation