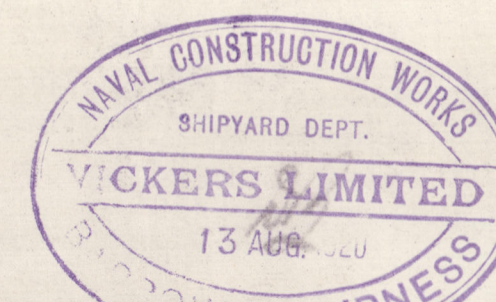


CARGO STEAMER

Nº 591.

ARRANGEMENT & DETAILS OF RUDDER & STERN FRAME.

SCALES AS SHEWN.



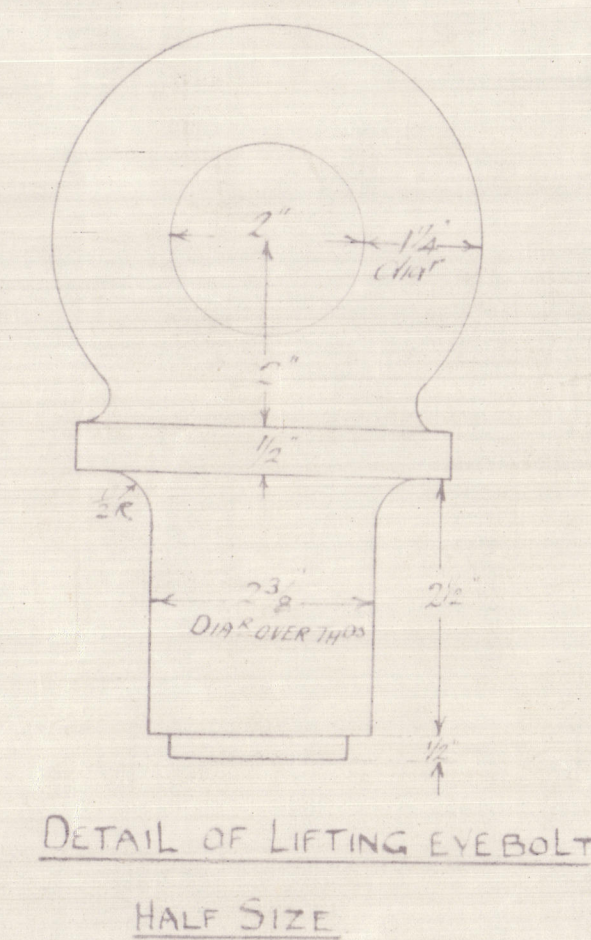
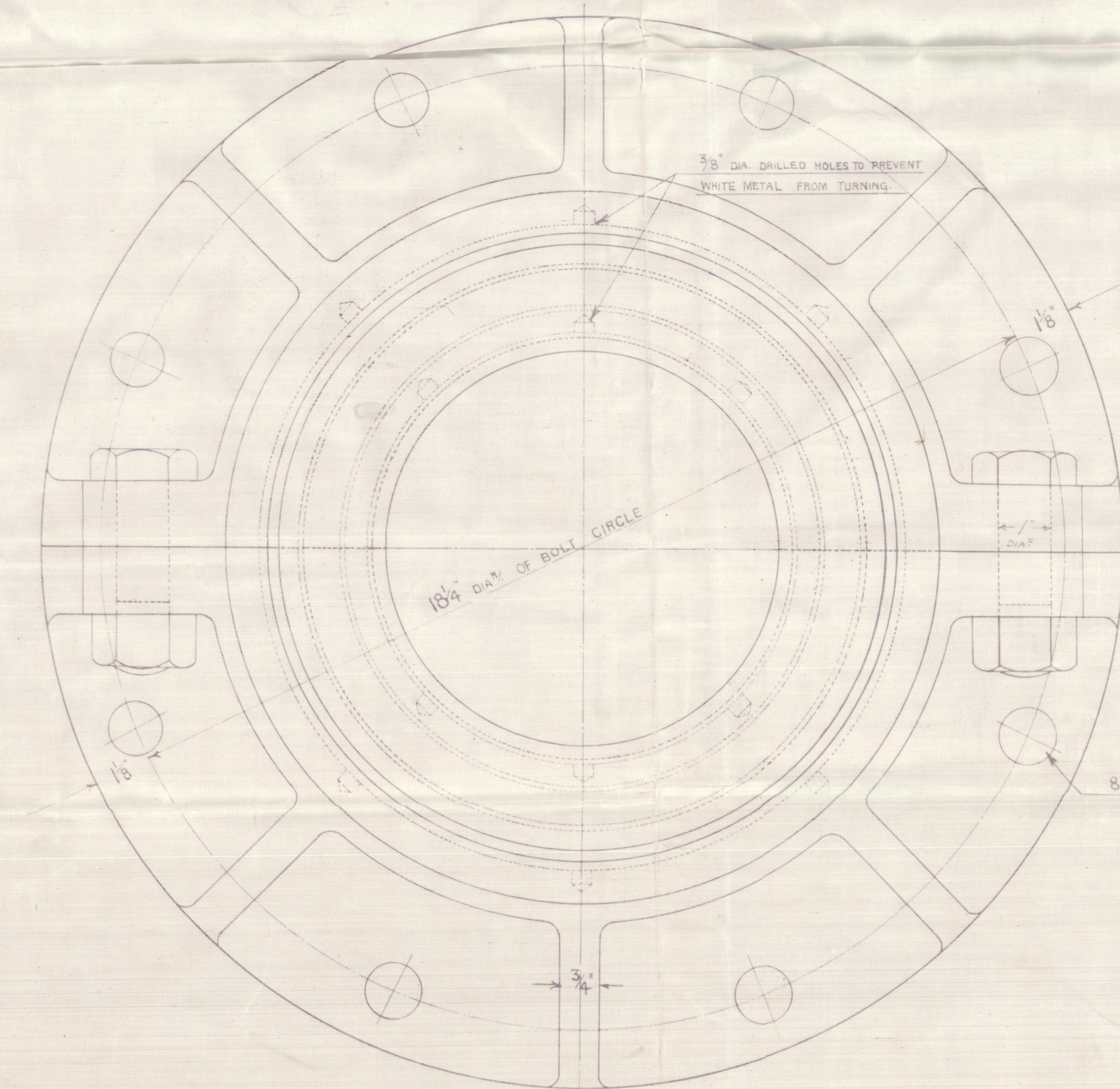
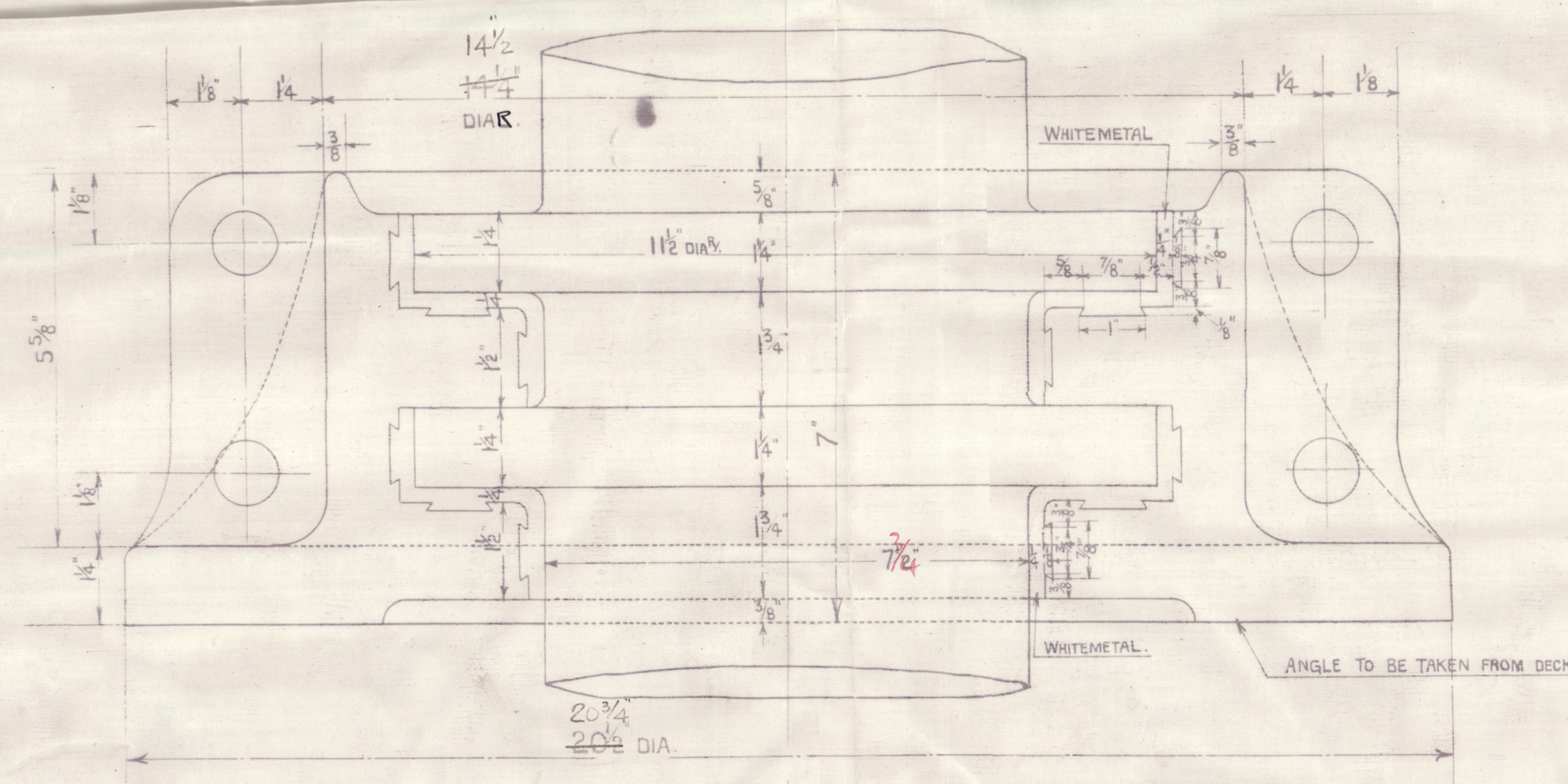
STEADIMENT BEARING FOR RUDDER HEAD.
1 OFF THUS CAST STEEL.
HALF SIZE.

RUDDER TO RULE FOR 16 KNOTS.
AREA OF RUDDER $64 \frac{1}{2}$ A.D. = 175 184
ANGLE OF RUDDER = 40°
DIA OF RUDDER HEAD = $7\frac{1}{2}$

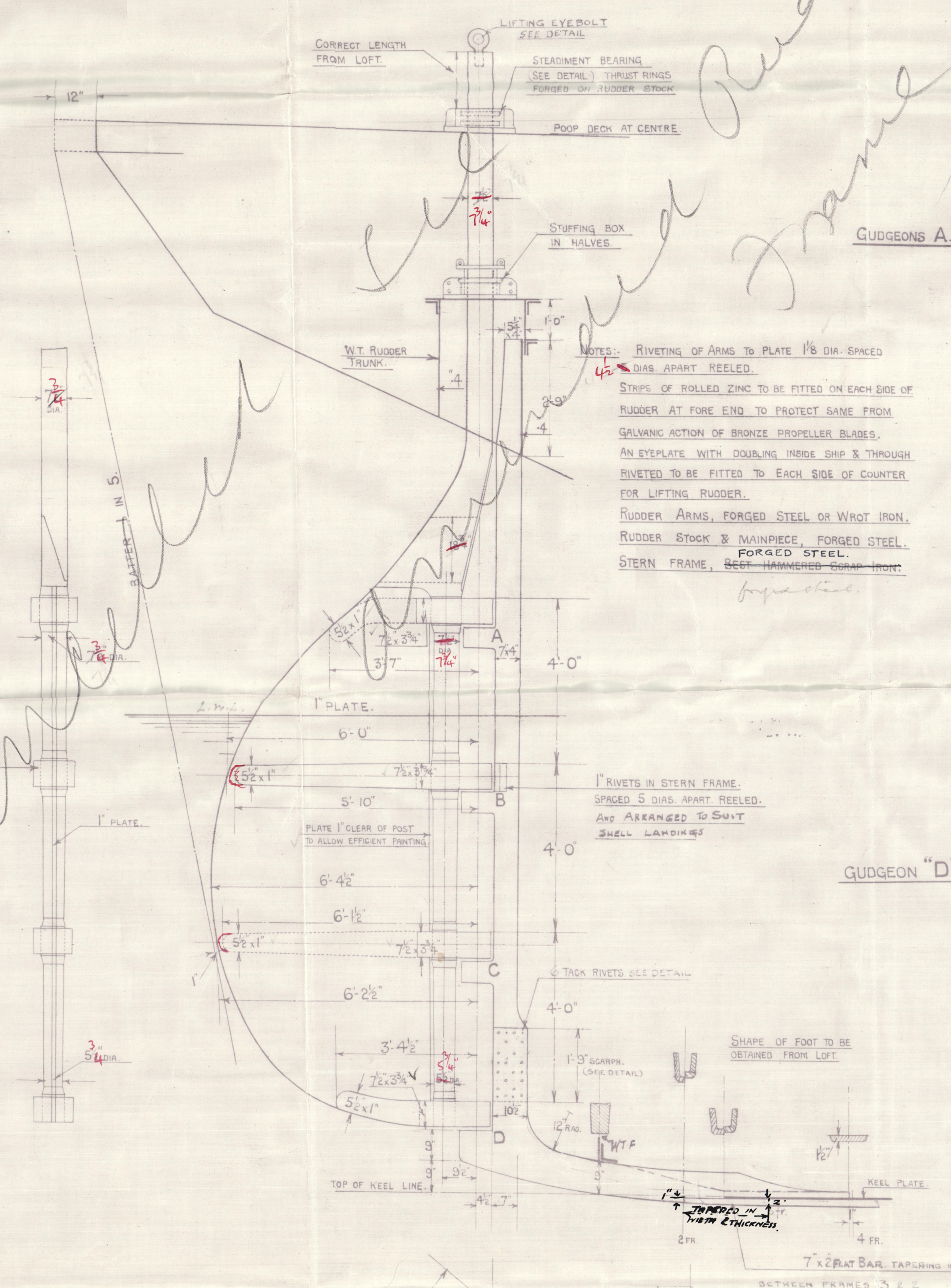
GENERAL ARRANGEMENT OF RUDDER & STERN FRAME.
SCALE $\frac{1}{2}$ INCH = ONE FOOT.

DETAILS OF GUDGEONS, &c.
SCALE $\frac{1}{4}$ FULL SIZE.

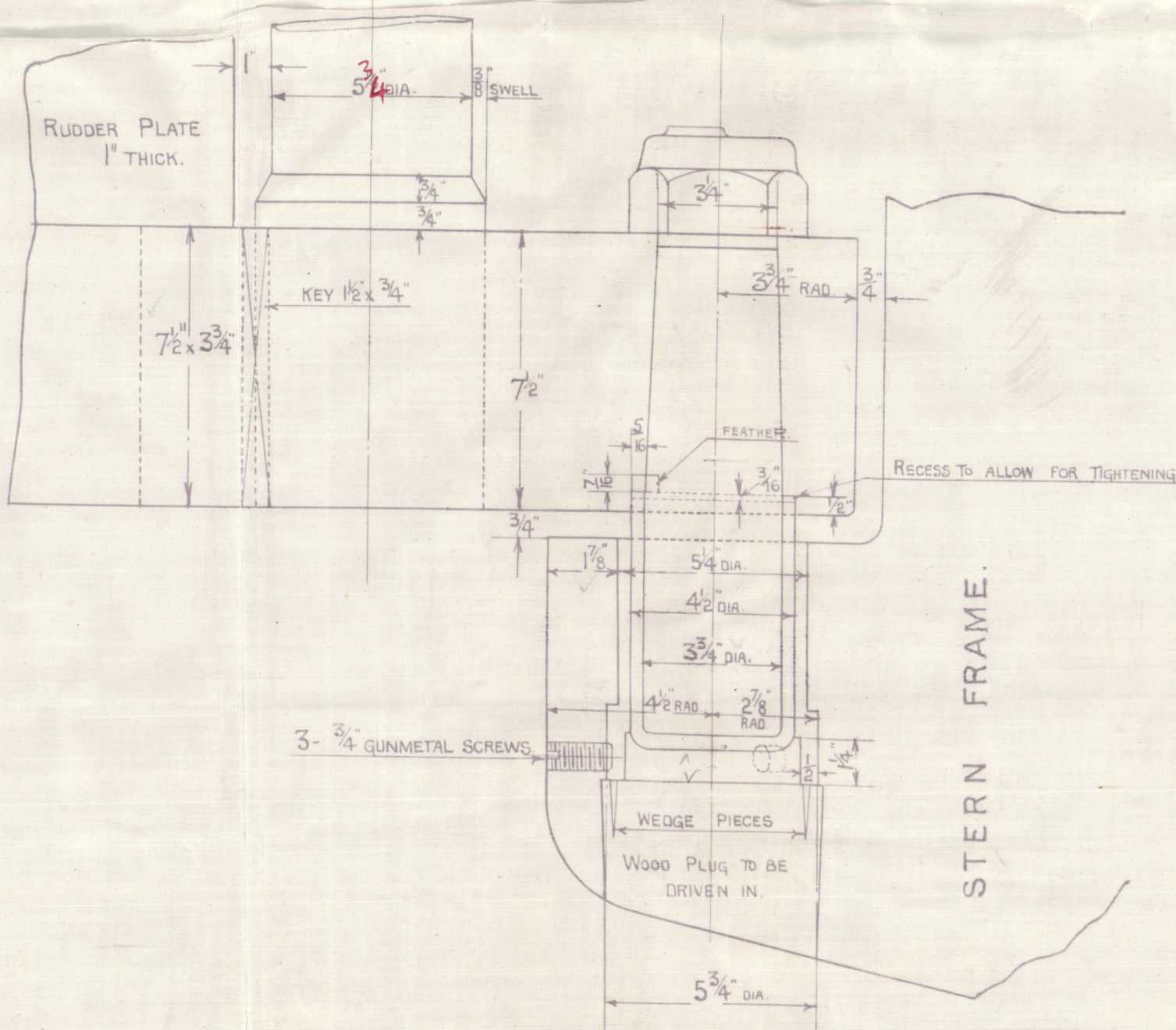
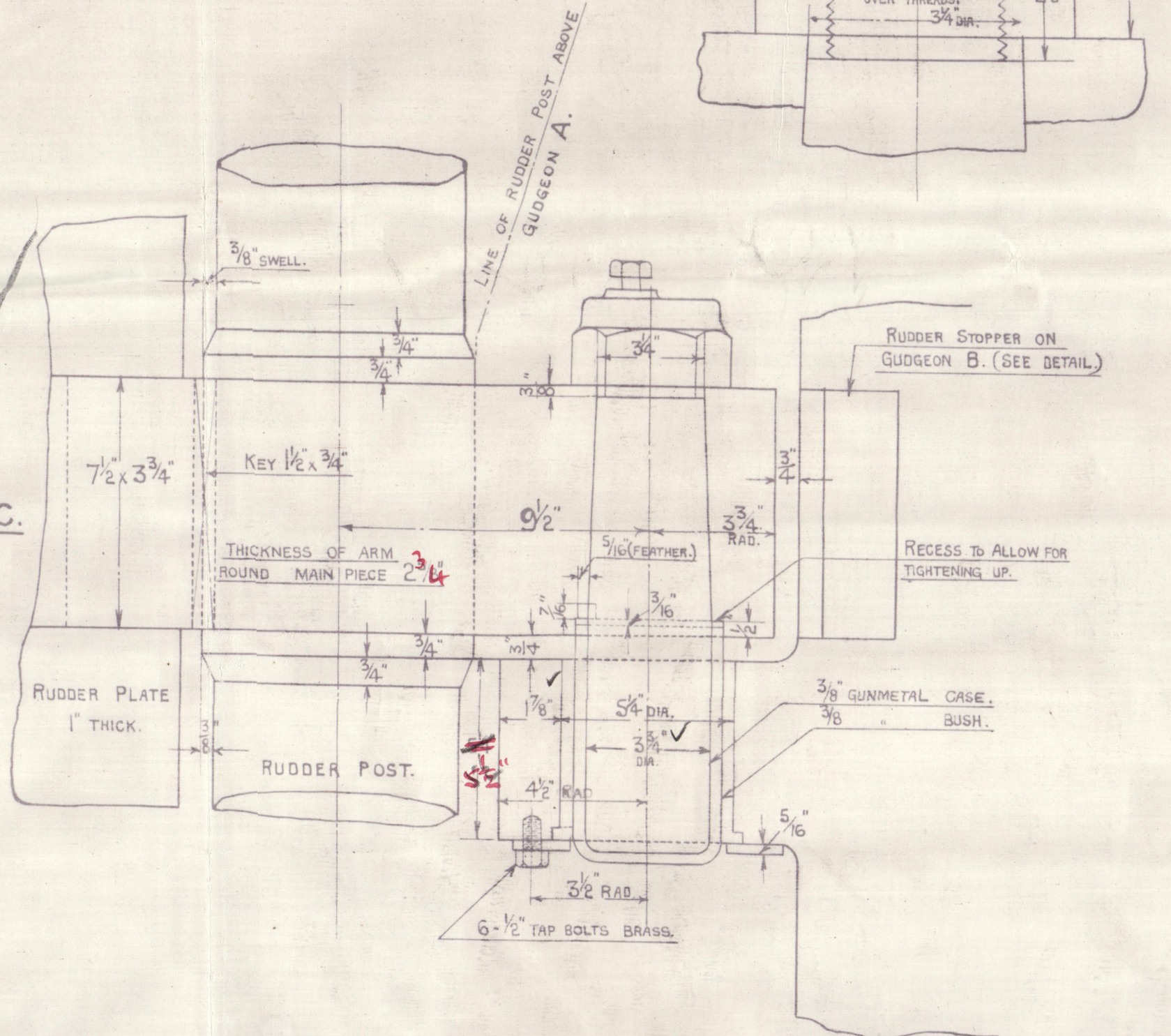
DETAILS OF SCARPH.
SCALE 3 INS. = ONE FOOT.



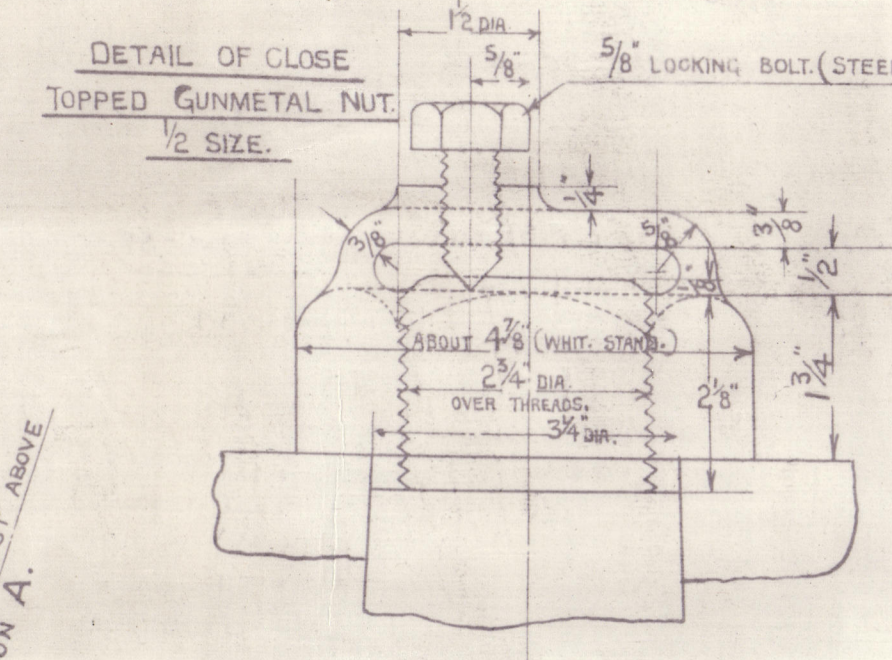
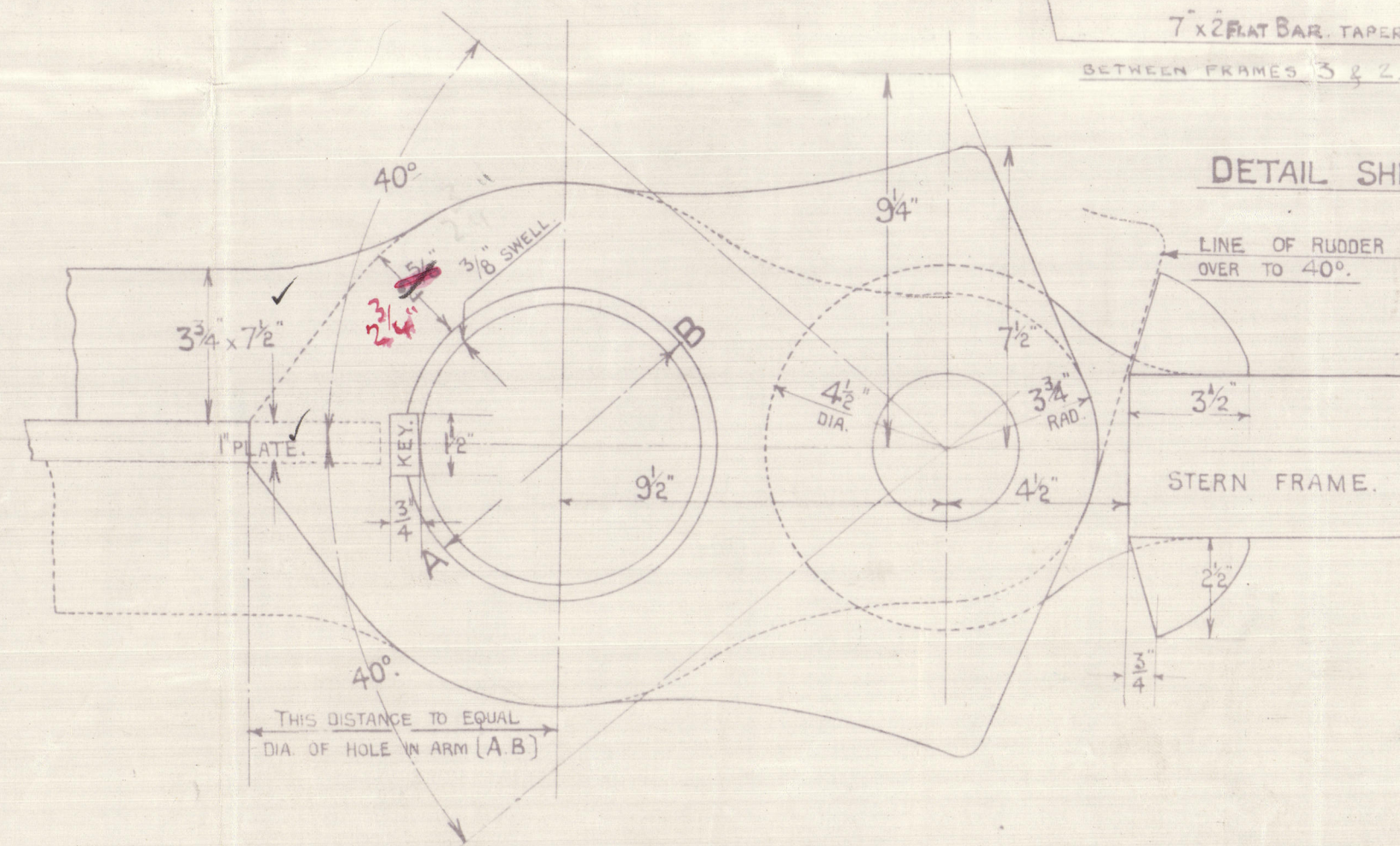
GENERAL ARRANGEMENT OF RUDDER & STERN FRAME.
SCALE $\frac{1}{2}$ INCH = ONE FOOT.



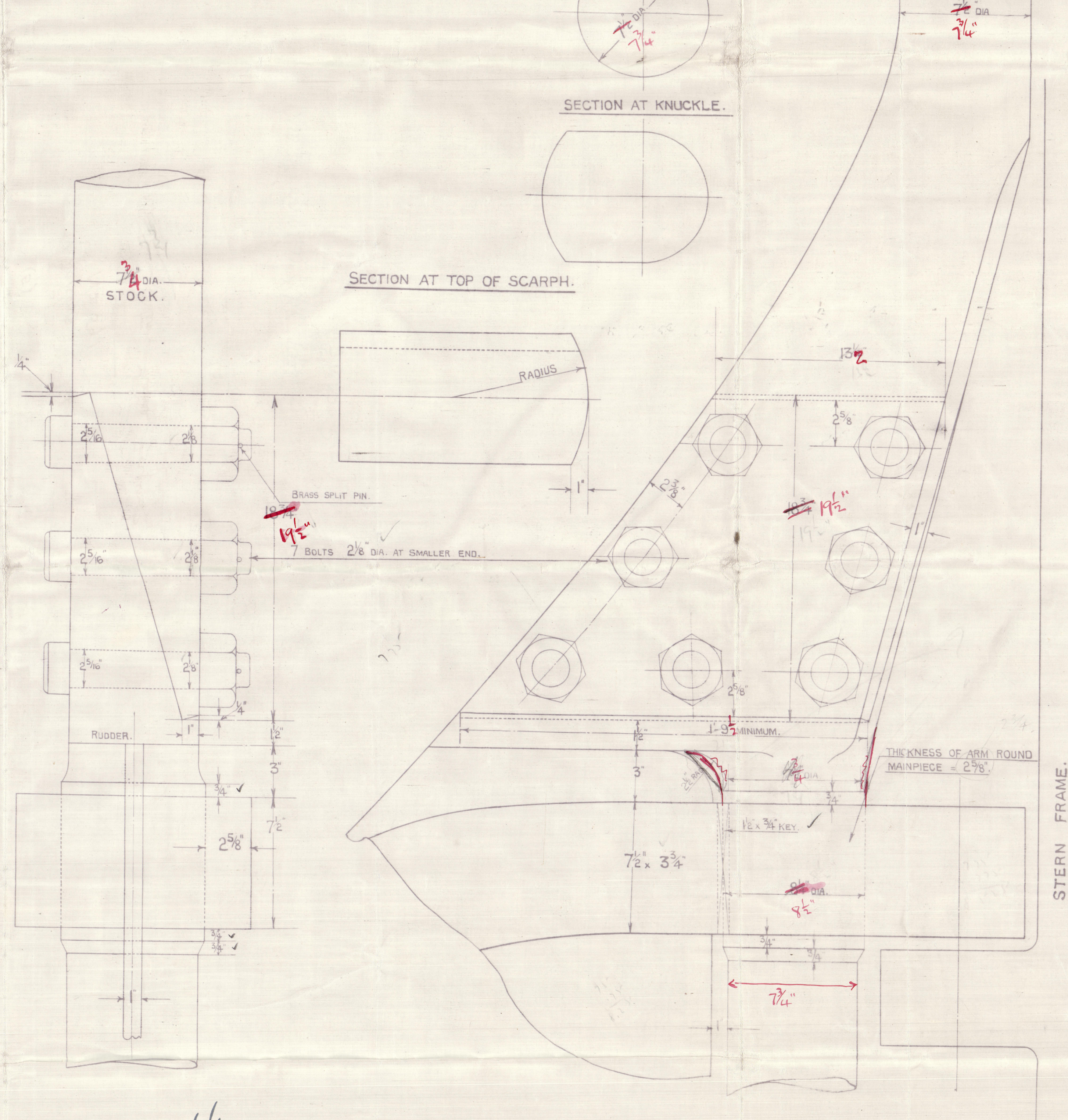
DETAILS OF GUDGEONS, &c.
SCALE $\frac{1}{4}$ FULL SIZE.



DETAIL SHEWING STOPPER (AT GUDGEON B.)
SCALE $\frac{1}{4}$ FULL SIZE.



DETAILS OF SCARPH.
SCALE 3 INS. = ONE FOOT.



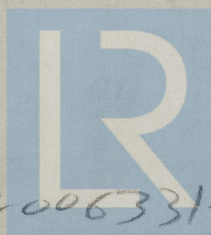
(5)

Vickers Ltd
No 591

Rudder & Stern Frame Forgings

See amended plan of Rudder. = No. 6.

Bwd 1st Entry Rpt 1934 -
"Sliese Bonard"



© 2020

Lloyd's Register
Foundation

006317 006331-0014