

11 MAY 1939

STEEL TWIN SCREW FERRYBOAT. YARD NO 51

FOR TYNE IMPROVEMENT COMMISSION

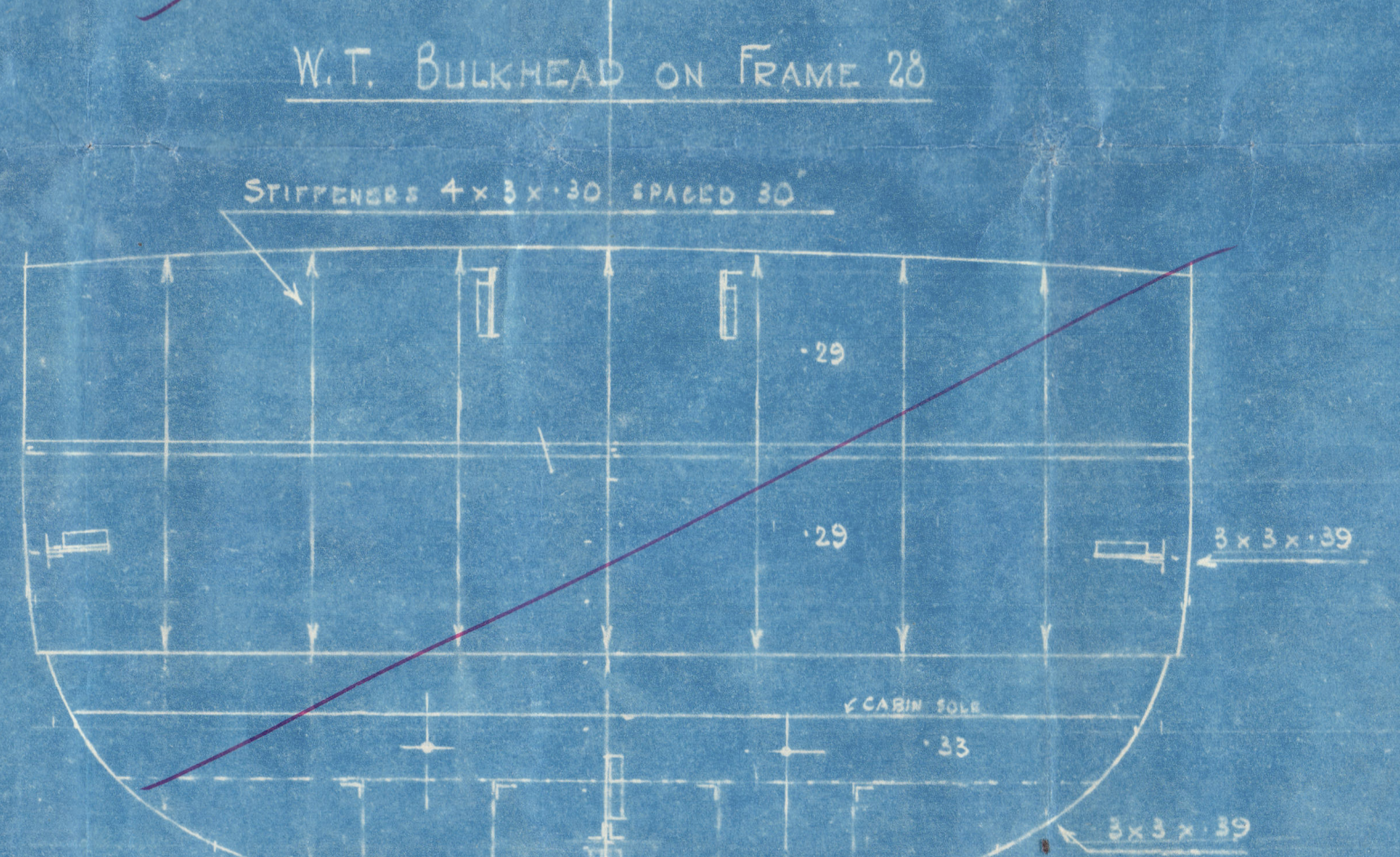
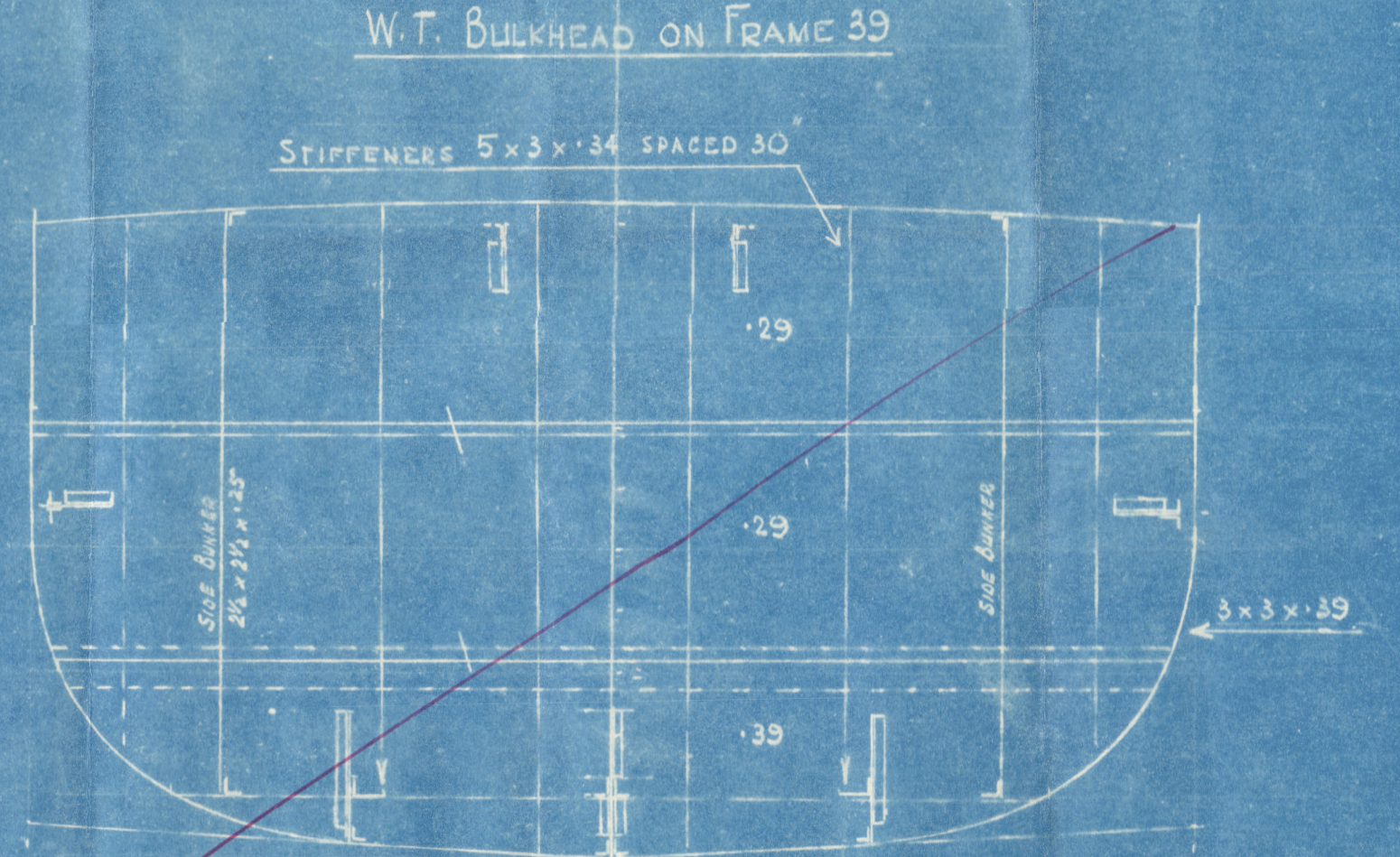
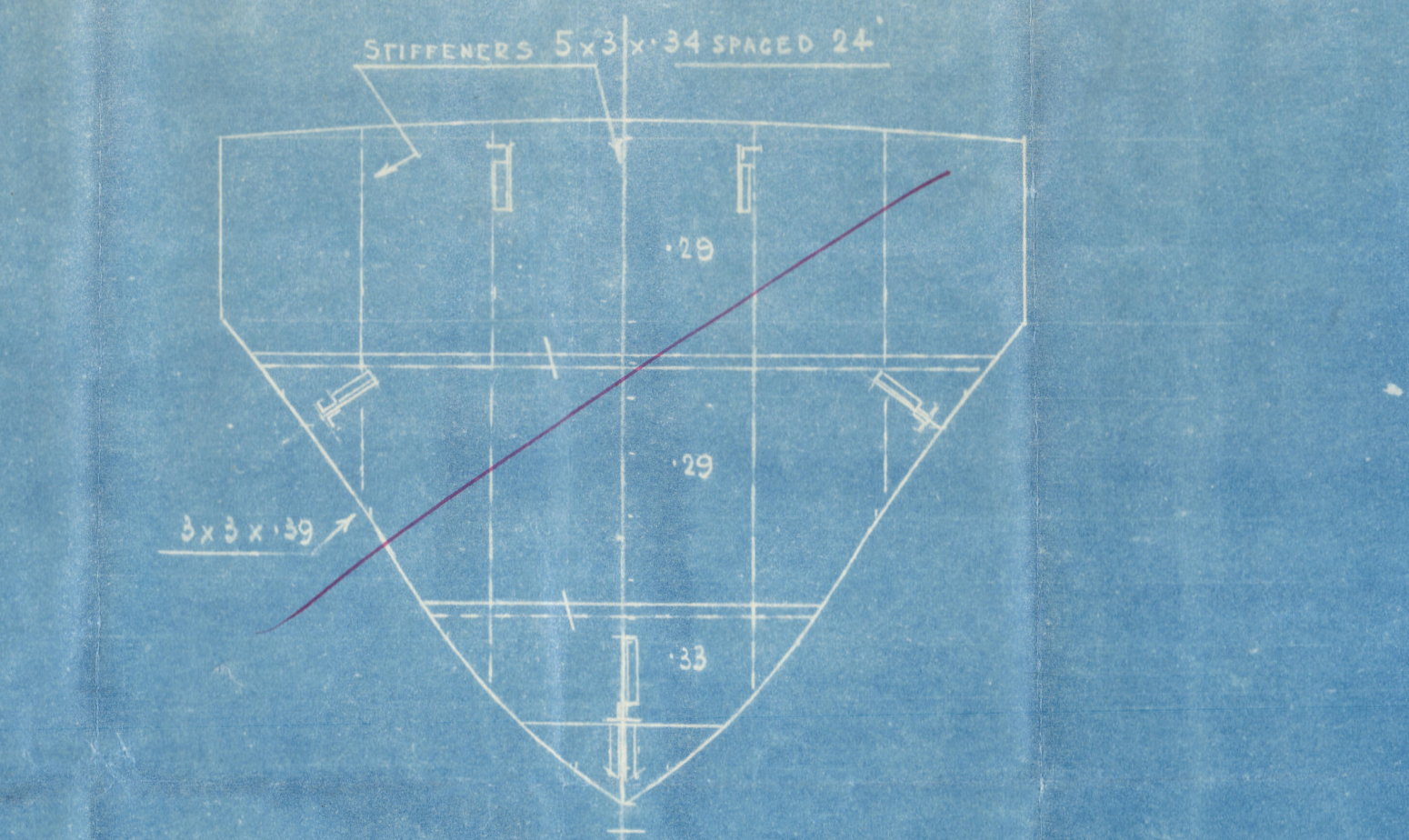
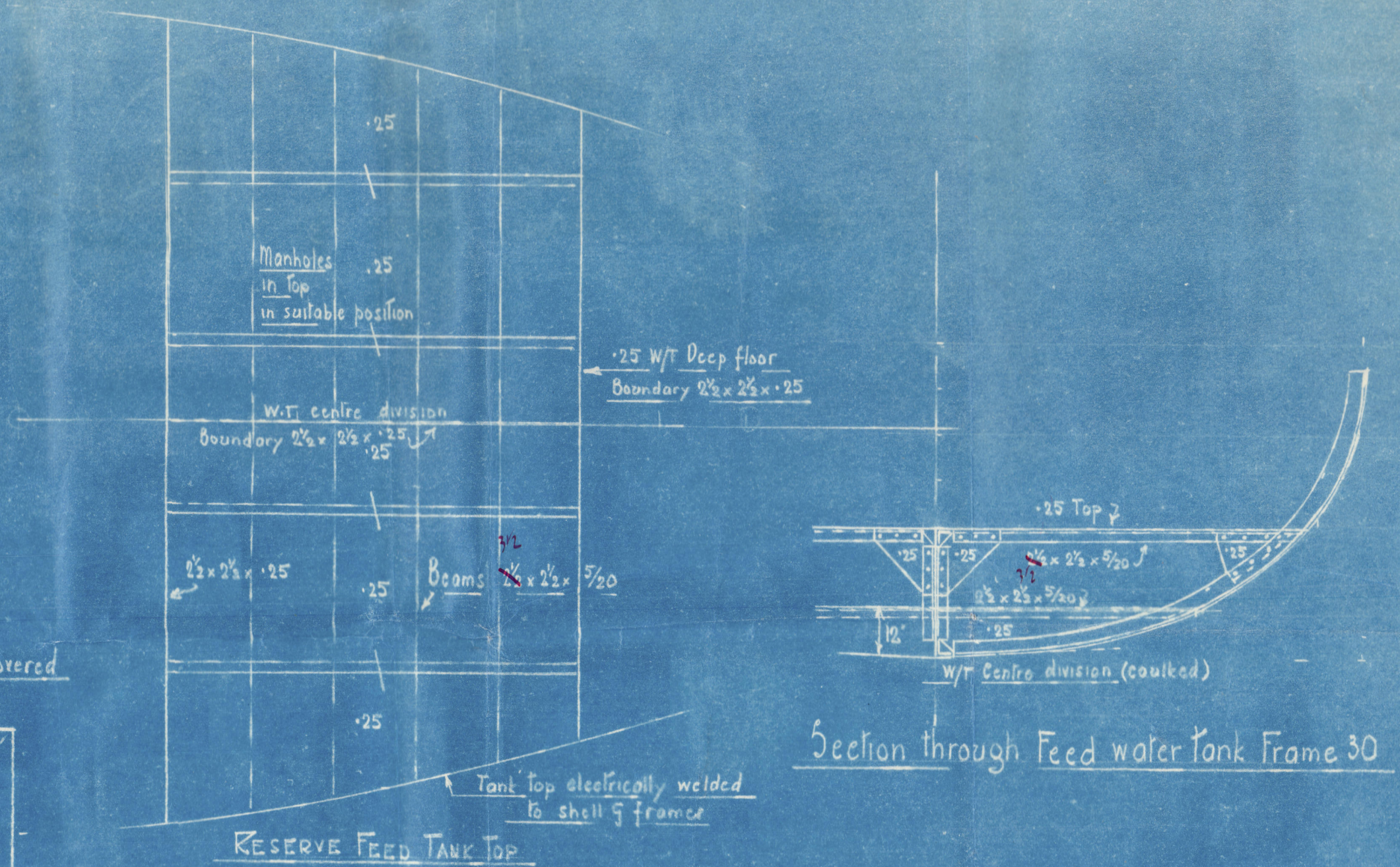
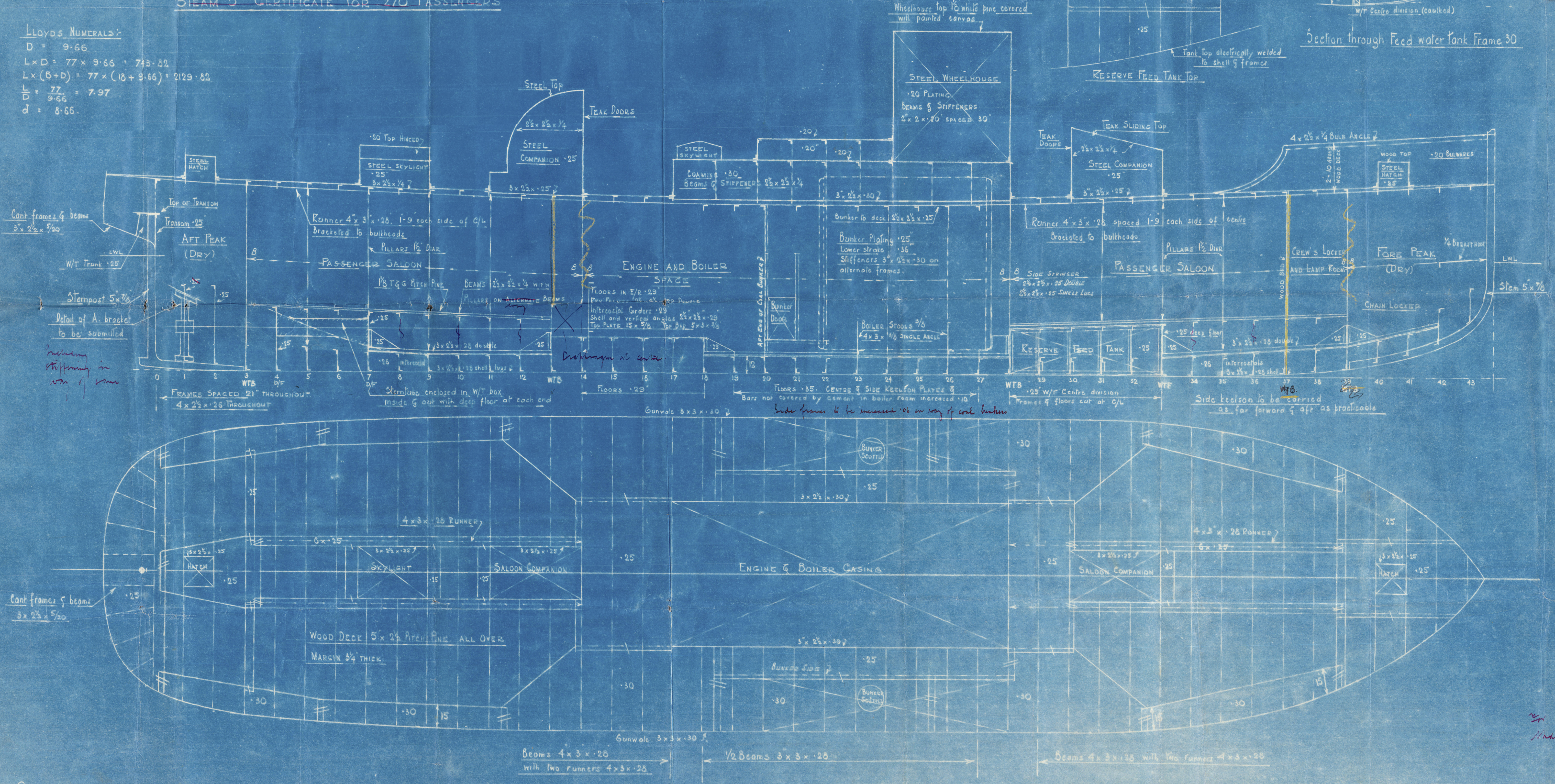
DIMENSIONS 80' 0" O.A. x 77' 0" B.P. x 18' 0" MLD x 9' 8" MLD

PROFILE, DECK & BULKHEADS

SCALE 3/8" = 1 FOOT

To CLASS LLOYDS 100A WITH FREEBOARD FOR RIVER SERVICES AND TO REQUIREMENTS OF BOARD OF TRADE FOR A PASSENGER FERRYBOAT OPERATING ON RIVER TYNE
STEAM 5 CERTIFICATE FOR 270 PASSENGERS

LLOYDS NUMERALS:
D = 9.66
L x D = 77 x 9.66 = 743.82
L x (B + D) = 77 x (18 + 9.66) = 2129.82
 $\frac{L}{D} = \frac{77}{9.66} = 7.97$
d = 8.66



PLAN NO. 3683
PRINT NO. 12668

CLELANDS (SUCCESSORS) LTD
WILLINGTON-QUAY-ON-TYNE

W.T. BULKHEAD ON FRAME 3

006407006411-0027

W.J.
11.5.39
CLELANDS (SUCCESSORS) LTD
WILLINGTON-QUAY-ON-TYNE
REGISTERED
FOUNDATION

Nº 51

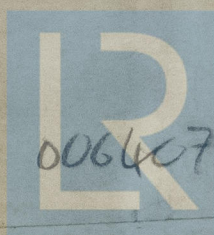
PROFILE & DECK
& BULKHEADS

C L E L A N D'S

T.S.S. 'Tollingwood.'

NEWCASTLE ON TYNE.

Report No. 98510.



© 2020

006467-006411-0027

Lloyd's Register
Foundation

CLELANDS 51

PROFILE, DECK & BULKHEADS.

51



© 2020

Lloyd's Register
Foundation