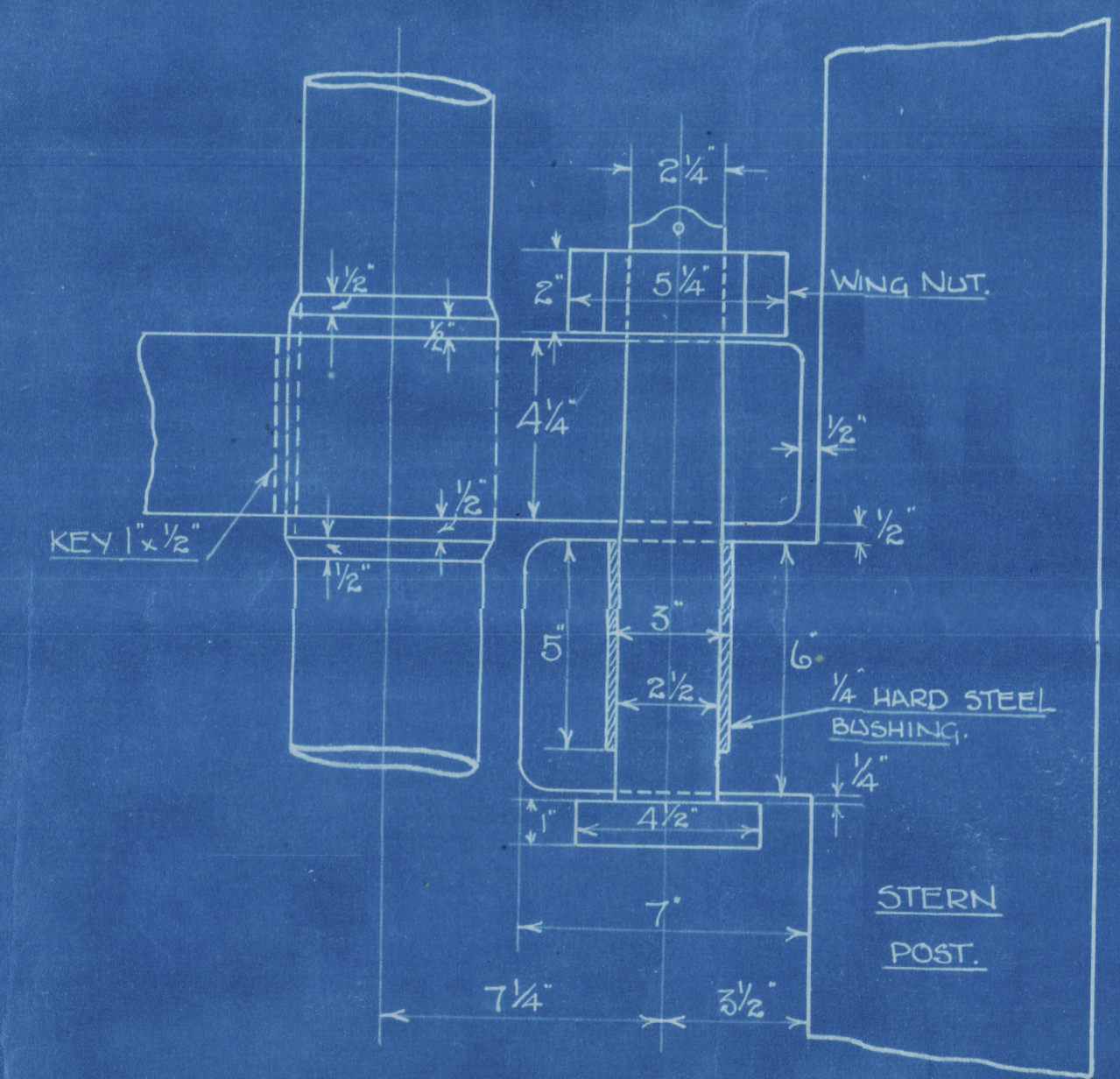
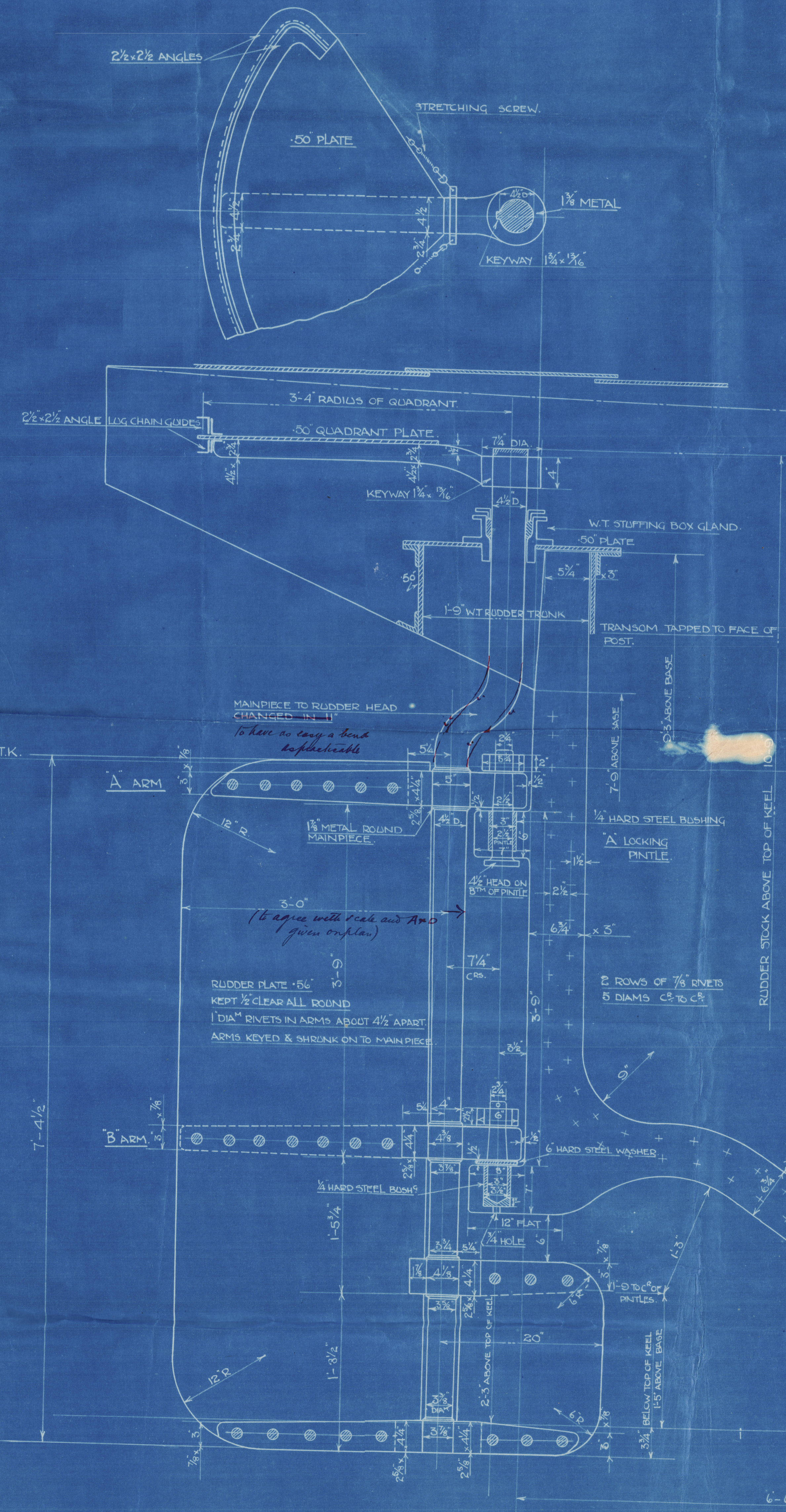
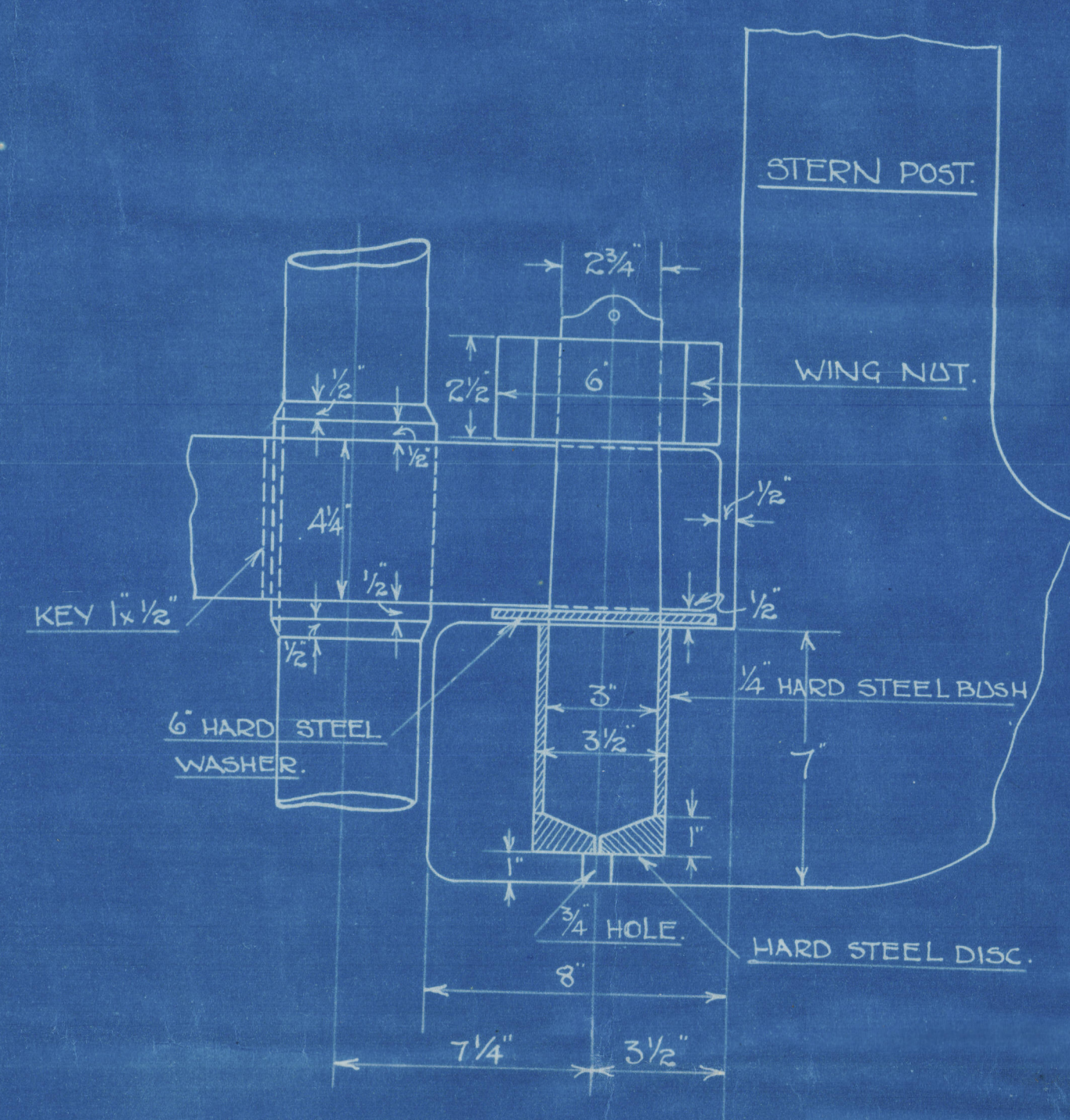


7.7.20

DETAIL OF TOP LOCKING PINTLE
3" = 1 FOOT.



DETAIL OF BOTTOM PINTLE
3" = 1 FOOT.



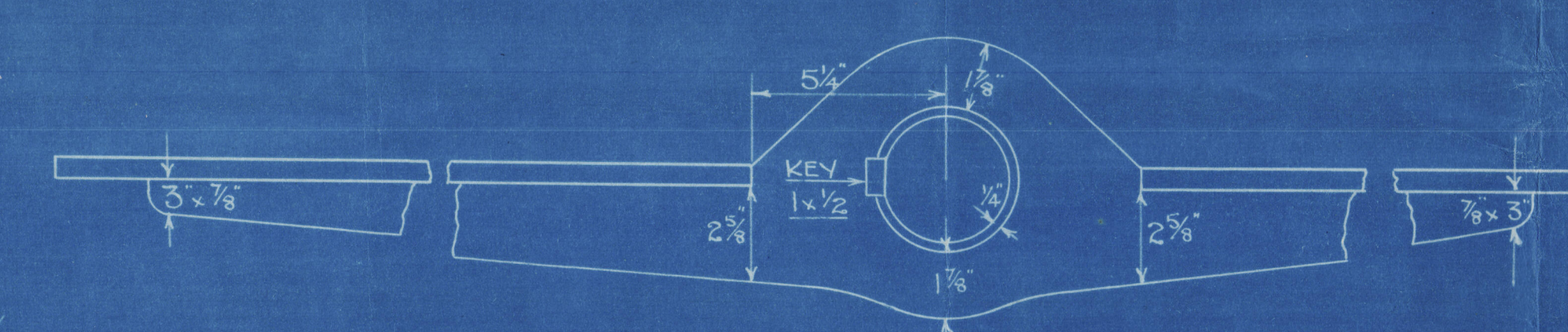
T.S.S. N° 27
JARROW & HOWDON PASSENGER
& VEHICLE FERRY.

QUADRANT, STERN, & RUDDER FRAMES.

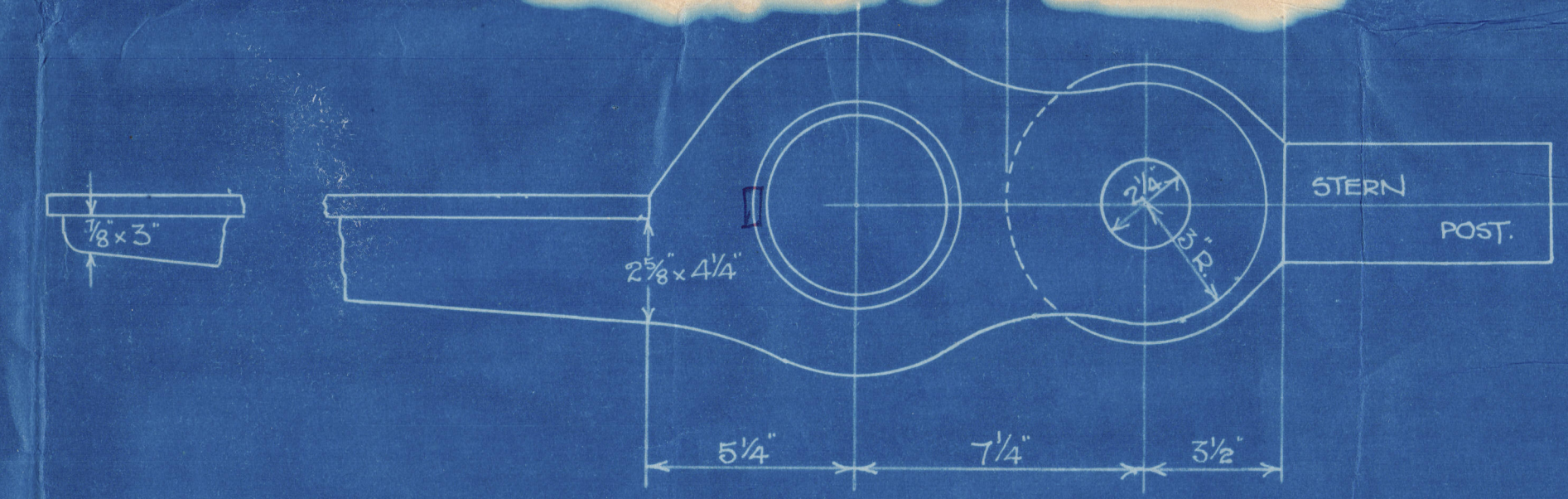
1 1/2" = 1 FOOT.

STERN FRAME - FORGED IRON.
RUDDER - FORGED IRON (ARMS KEYED & SHRUNK ON)
MILD STEEL QUADRANT & WROUGHT IRON TILLER.
LLOYD'S & B.O.T. REQUIR^d (RIVER WORK ONLY.)
A x D = 43.5 SPEED 9 1/2 KNOTS.
CHAINS 1/2" DIAM. RODS 3/8" DIAM.
RIVET HOLES LINED OFF BY LOFTSMAN.

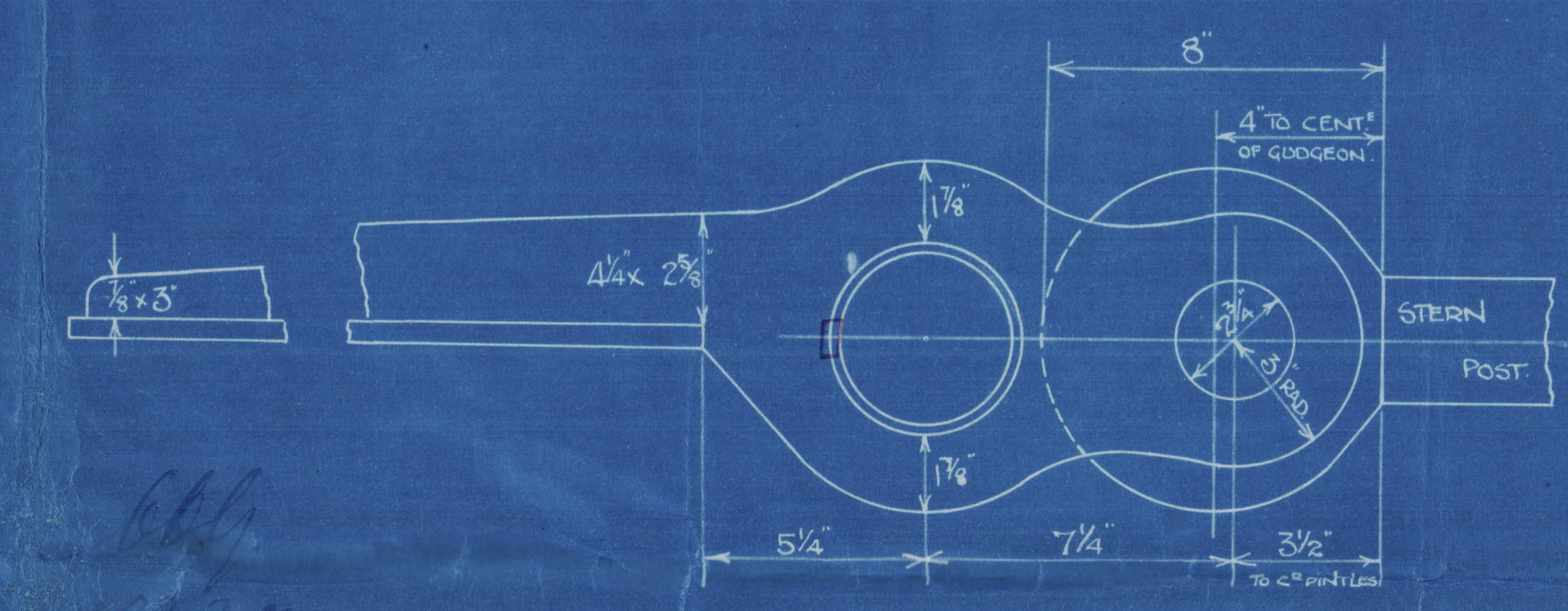
PLAN AT BOTTOM ARM.
3" = 1 FOOT.



PLAN AT ARM "A"
3" = 1 FOOT.



PLAN AT ARM "B"
3" = 1 FOOT.



(4)

TSS No 27

Janon & Howdon
Ferry

Quadrant. Clear

&
Rudda

West Palmer 1B + 1A 25

Lo built at Ambler

T. S. F. A.B. GOWAN

NEWCASTLE ON TYNE.

Report No. 44483.



© 2021

Lloyd's Register
Foundation

006412-006422-0120