

Twin Screw Ferry Steamer N° 691

Scanling Section.

Scale $\frac{1}{2}'' = 1' - 0''$

To Lloyds & Board of Trade Requirements for River Ferry Service for Passengers & Vehicles

Class 100 A1 "1/4 River purposed only"

Lloyds Numerals

$D = 12.58$
 $L \times D = 110 \times 12.58 = 1383.8$
 $L \times [B + D] = 110 \times [34 + 12.58] = 5123.8$
 $\frac{L}{D} = 8.74$
 $d = 11.21$

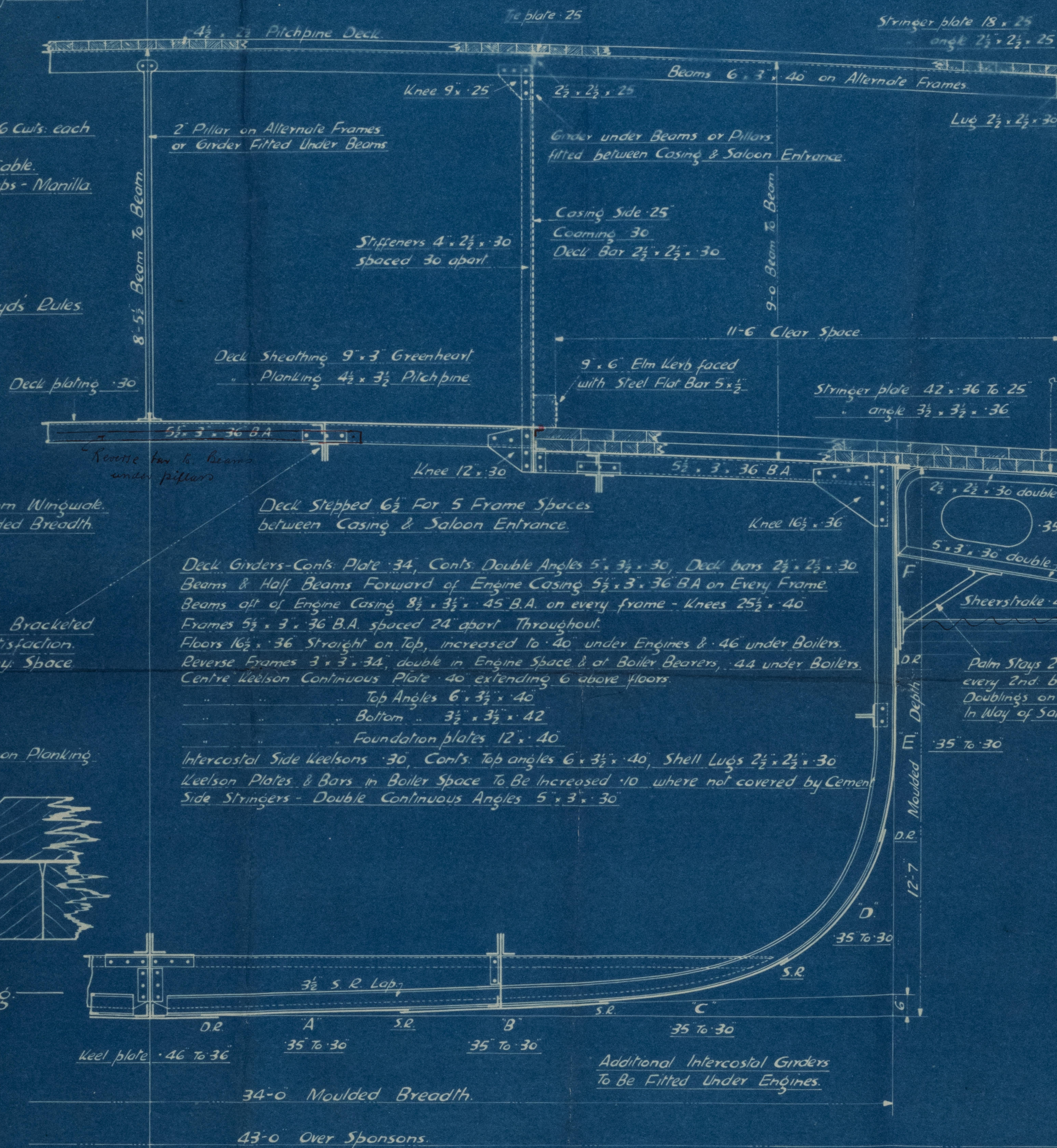
Equipment

Two Anchors of Approved Type - 10' 6 Cw's each including stock
 30 Fathoms 1" Short Link Chain Cable.
 4 N° 30 Fathom 6" Mooring Warps - Manila.
 All Lloyds Tested.

Building in Accordance with Lloyds Rules

Principal Dimensions

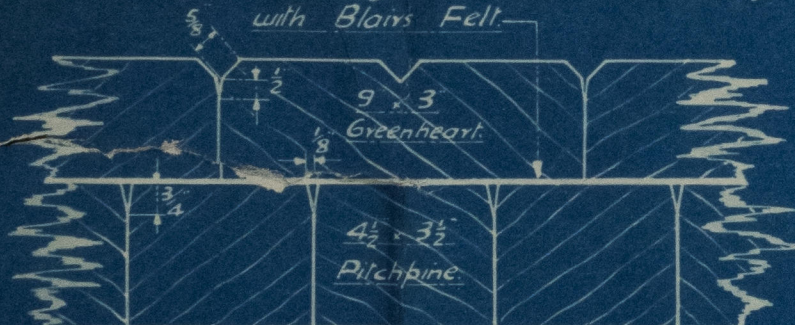
Length B.P. 110'-0"
 Breadth Moulded 34'-0"
 Depth 12'-7"



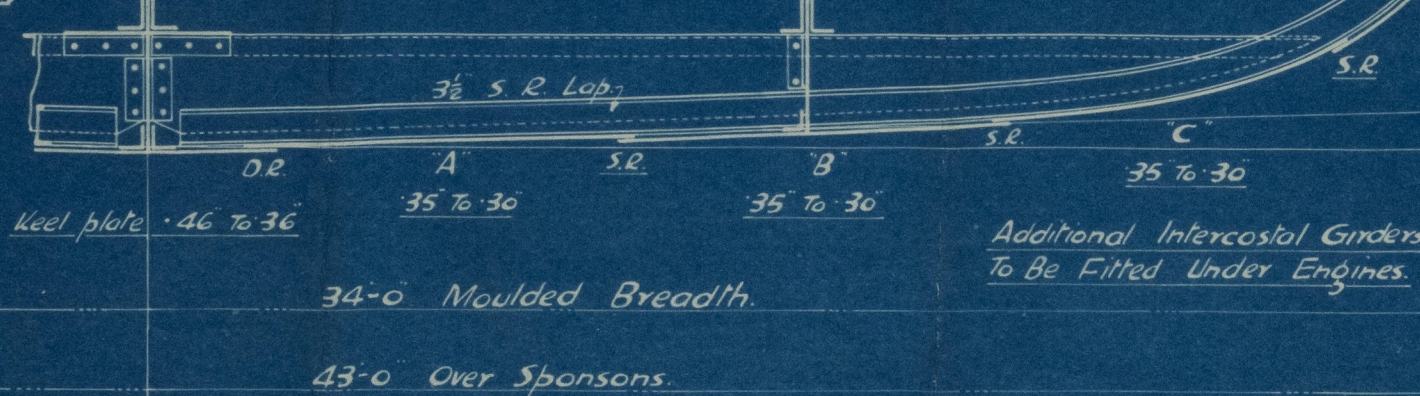
Note: Deck to be Cambered from Wingwale. Camber 6" in 34'-0" Moulded Breadth.

Girders in Lieu of Pillars, Strongly Bracketed to Bulkheads, to Surveyors Satisfaction. Pillars to be arranged in Machy. Space All to Surveyors Approval.

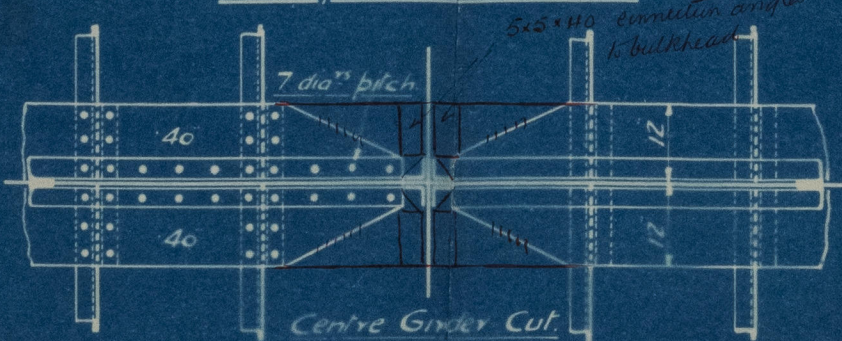
Sheathing to be Bedded on Planking with Blairs Felt.



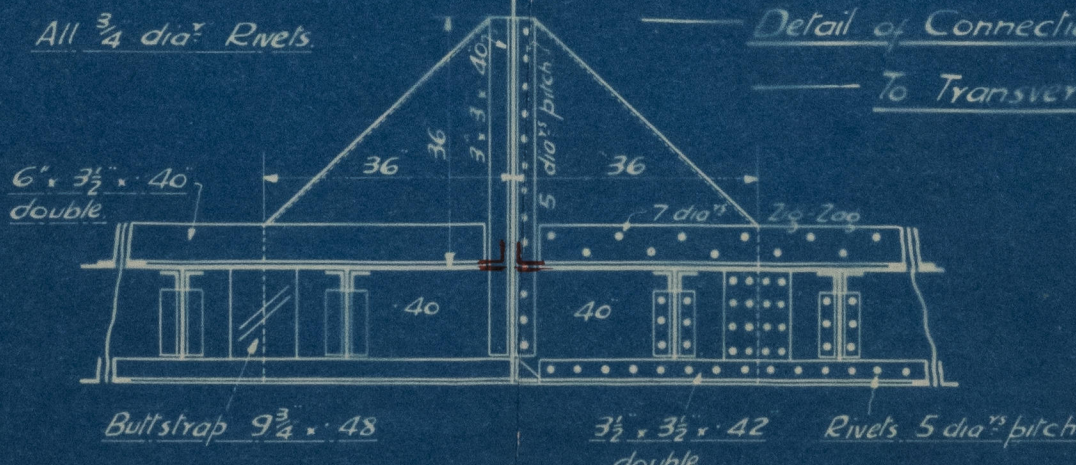
Detail of Deck Planking



Plan of Foundation Plates



All 3/4 dia" Rivets



Detail of Connection of Centre Girder to Transverse Bulkheads

Drawing N° 8775-S



Lloyds
No 691

Philip & Son

Amended

Midship

Section

8/5 Tynemouth



© 2020

Lloyd's Register
Foundation