

# Lloyd's Register of Shipping.

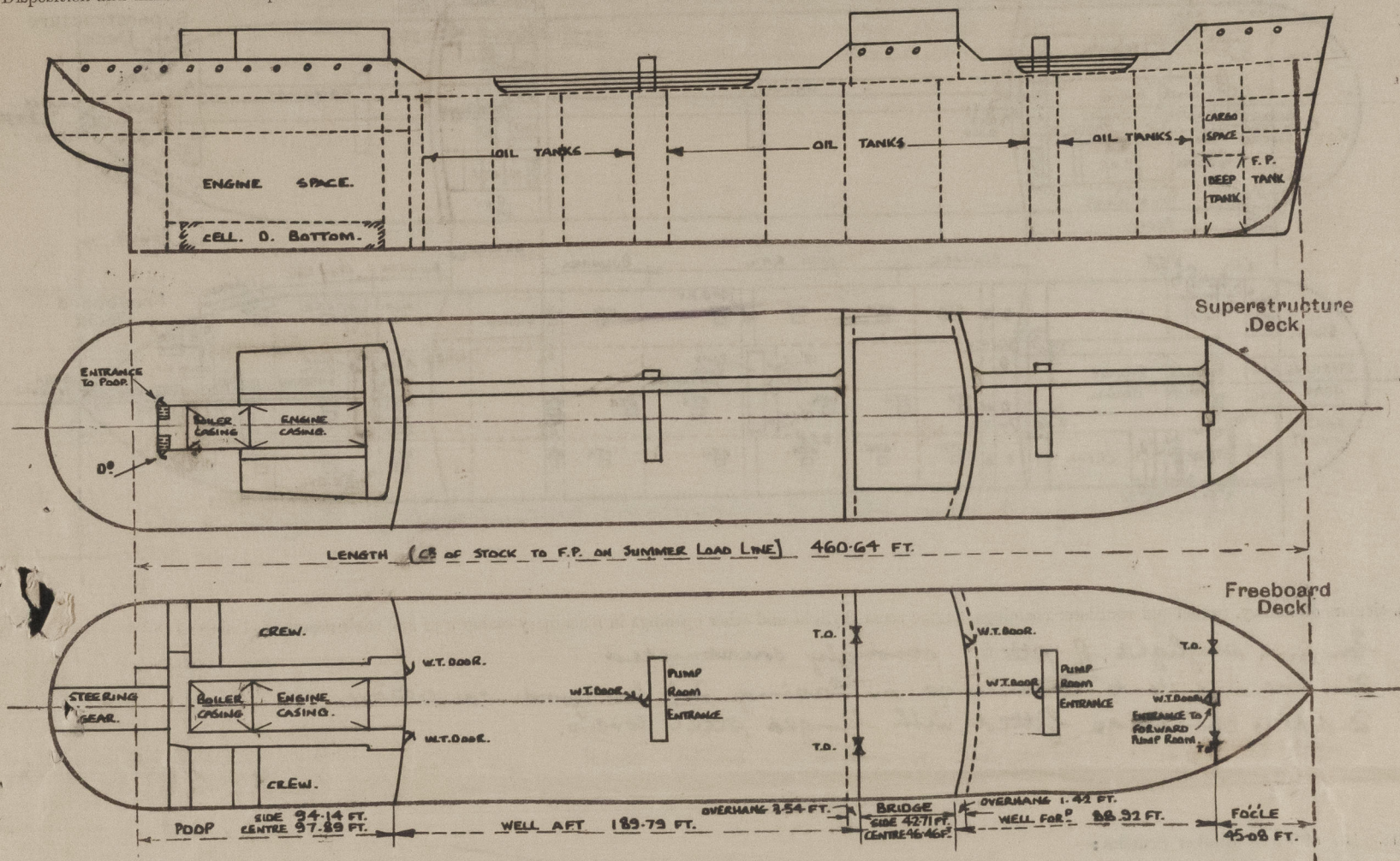
## SURVEYS FOR FREEBOARD.

### (CONDITIONS OF ASSIGNMENT.)

DEC - 6

Ship's Name **"DENBYDALE."** Port of Survey **GLASGOW.**  
 Official Number **168051** Surveyor's Signature **R. Dunsmeith.**  
 Nationality and Port of Registry **BRITISH - GLASGOW.** Date of Survey **WHILE BUILDING.**

Disposition and dimensions of superstructures, trunks, deckhouses and machinery casings to be inserted in the diagrams and tabular statement:—



Particulars of Superstructures, Trunks, Casings, Deckhouses.

	Coaming	Plating	Stiffeners	Spacing	End Attachments of Stiffeners	Size of Openings	Height of Sills	Height of Casings
Poop Bulkhead ...	46 PLATING		B.A. 10" x 3 1/2" x 50"	30"	LUGGED TOP WELDED BOTTOM.	1 P. & S. 5'-0" x 3'-0"	24"	7'-6"
Raised Quarter Deck Bulkhead ...								
Bridge, After Bulkhead ...	32 PLATING.		ANGLE 4" x 3" x 38"	33" & 36"	BRACKETED AT TOP.	1 P. & S. 5'-0" x 3'-1"	18"	7'-6"
Bridge, Forward Bulkhead ...	44 PLATING		B.A. 10" x 3 1/2" x 50"	33" & 36"	BRACKETED TOP WELDED BOTTOM.	1 P. 5'-0" x 3'-0"	15"	7'-6"
Forecastle Bulkhead ...	30 PLATING		ANGLE 4" x 3 1/2" x 32"	26" & 30"	NONE.	1 P. & S. 5'-6" x 3'-1"	12"	7'-6"
Trunk, Aft ...								
Trunk, Forward ...								
Exposed Machinery Casings on Freeboard or Raised Quarter Decks ...								
Exposed Machinery Casings on Superstructure Decks ...	42" x 34"	30"	ANGLE 3" x 3" x 30"	30" x 30 3/4"	NONE	NONE	✓	7'-6"
Machinery Casings within Superstructures not fitted with Class I Closing Appliances ...								
Deckhouses on Flush Deck Ships ...								

Particulars of Closing Appliances (state if capable of being manipulated from both sides).

Poop Bulkhead ...	Hinged steel w.t. Doors.	manipulated from both sides. ✓
Raised Quarter Deck Bulkhead ...		
Bridge, After Bulkhead ...	Hook bolted plates.	Hook bolts not passing through bulkheads ✓
Bridge, Forward Bulkhead ...	Hinged steel w.t. Doors.	manipulated from both sides. ✓
Forecastle Bulkhead ...	Hook bolted plates.	Hook bolts not passing through bulkhead. ✓
Exposed Machinery Casings on Freeboard or Raised Quarter Decks ...		
Exposed Machinery Casings on Superstructure Decks ...	No openings. ✓	
Machinery Casings within Superstructures not fitted with Class I Closing Appliances ...		
Deckhouses on Flush Deck Ships ...		



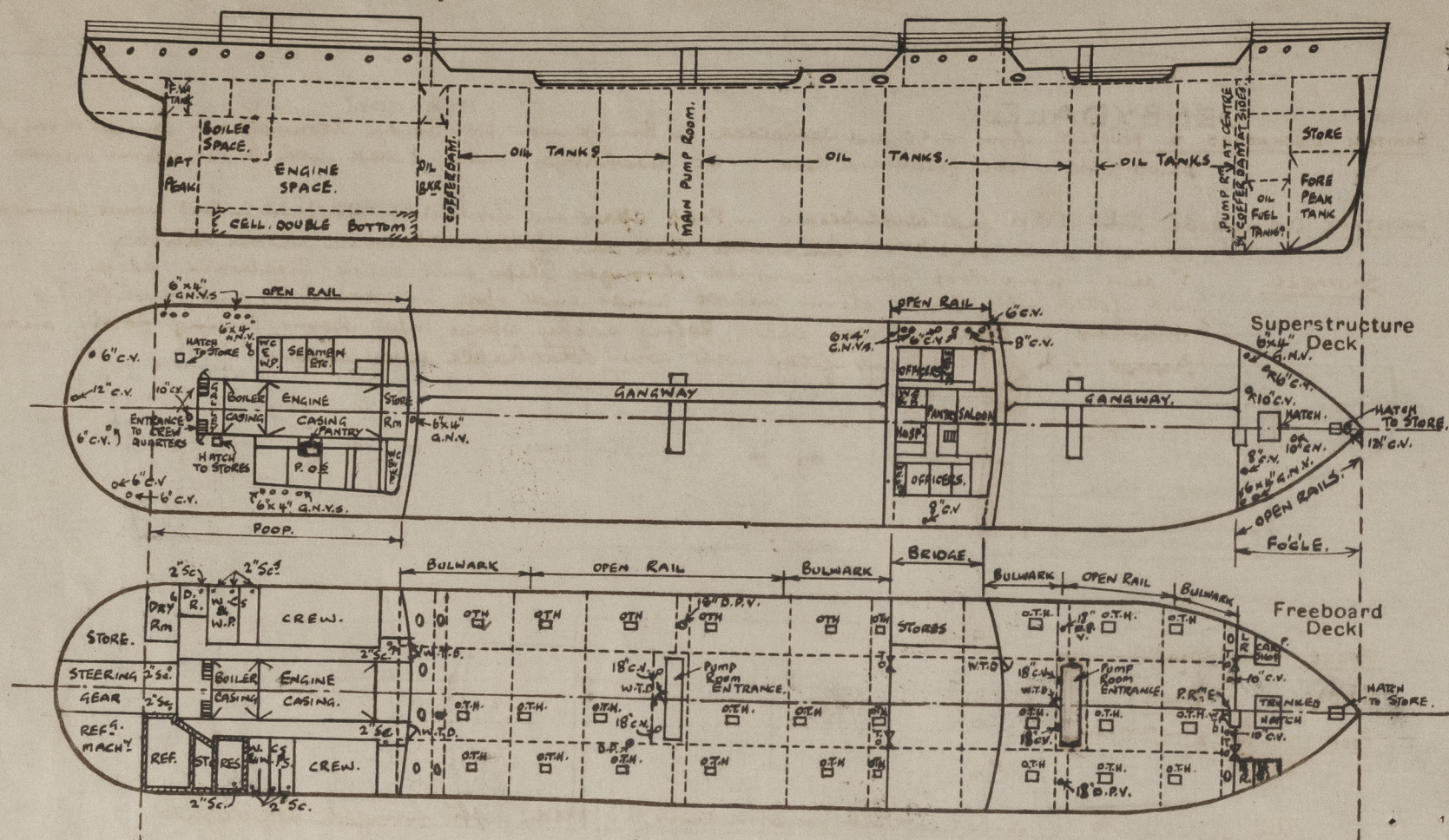
© 2021

Lloyd's Register  
Foundation



# PARTICULARS OF PROTECTION TO OPENINGS, ETC.

The following diagrams should be used to indicate the positions of cargo and coaling hatchways, gangway, cargo and coaling ports, ventilators, companionways, etc., which would affect the seaworthiness of the ship:—



Particulars of fiddle, funnel and ventilator coamings, engine room skylight and other openings in machinery casing tops and their means of closing:—

Engine skylight of steel, strongly constructed.  
Funnel and Vent coamings on casing top in good condition.  
Fiddle openings fitted with hinged steel covers.

Particulars of Flush Bunker Scuttles:—

None

Particulars of Companionways:—

ENTRANCE (P. & S.) TO POOP SPACE AT AFT END OF POOP HOUSE.  
Steel trunk in gallery casing, opening 5'-0" x 2'-0". Hinged solid wood door workable from both sides. Sill 18".

MAIN PUMP ROOM ENTRANCES.

Steel casing 7'-6" high. Plating 1/4" front and sides. 30" at top. Stiffeners 6" x 3/4" x 1/16" B.A. spaced 27" and 31". Hinged steel w.t. door 5'-0" x 2'-3". operated from both sides. Sill 15".

ENTRANCE TO FOR'D PUMP ROOM AT FO'LE BHD. Steel trunk in Boiler Bhd 7'-6" high. with hinged steel w.t. door 5'-0" x 2'-3". operated from both sides. Sill 15".

Particulars of Ventilators in exposed positions on freeboard and superstructure decks:—

FO'LE DECK.	WELL FORWARD.	BRIDGE DECK.	WELL AFT.	POOP DECK.
2-10" C.V. to hold & swell deck. Coaming 36" x 32".	1-10" C.V. (p. & s.) to hold & swell deck. Coaming 36" x 32".	3-6" C.V. (p.) to hold & swell deck. Coaming 36" x 32".	1-18" D.P.V. (p.) to wing cofferdam at main pump room. 18" high x 32" plating doubled for 8'0" at deck. Port efficiently stayed.	1-6" C.V. (p.) to stove; 2-6" C.V. (s.) to Ref. machinery & 1-6" C.V. (s.) to steering gear. Coaming 30" x 30".
1-12" C.V. to hold & swell deck. Coaming 36" x 34".	1-18" C.V. (p. & s.) to main pump room. Coaming 6'-0" x 4'-0" with bracket stays at deck.	1-8" C.V. (s.) 30" x 30" to stove in bridge space.	1-18" C.V. (p. & s.) to main pump room. Coaming 8'-0" x 4'-0" stayed at top of pump room casing.	1-10" C.V. (s.) to boiler space. Coaming 30" x 32".
1-8" C.V. to boiler. Coaming 36" x 30".	1-18" D.P. (p. & s.) to wing cofferdams at main pump room.	2-6" x 4" G.N.V. (p.) (cast iron) coamings 18" high.		1-12" C.V. to steering gear. Coaming 30" x 34".
1-6" C.V. to stove. Coaming 36" x 30".	18'-0" high x 32" plating doubled for 8'0" at deck. Port efficiently stayed.			13-6" x 4" G.N.V. (cast iron) 18" high to washplaces, W.C.'s and stores.
3-6" x 4" G.N.V. (cast iron) 18" high to pump room & main stove.				

all coal ventilators to Rule requirements and fitted with wood plugs and canvas covers.

Particulars of Air Pipes in exposed positions on freeboard, raised quarter, or superstructure decks:—

FO'LE DECK. 1-4" m.i. to fore peak; 18" high.  
WELL FORD. 1-3" m.i. (p. & s.) to forward cofferdam; 1-4" m.i. (p. & s.) to oil fuel deep tank. 36" high.  
WELL AFT. 1-2 1/2" m.i. (p. & s.) to after cofferdam 6'-6" high & 4'-4" m.i. to oil fuel bunkers & settling tanks. 6'-6" high clipped to Poop Deck.  
POOP DECK. 1-2 1/2" m.i. (p. & s.) to fresh water tank; 1-3" m.i. (p. & s.) to aft peak;  
BOAT DECK. { 1-2 1/2" m.i. & 1-3 1/2" m.i. (p. & s.) to cofferdam and cooling water tank in double bottom 12" high.  
{ 1-4" m.i. (p. & s.) to oil fuel double bottom tank.  
Air Pipes to oil fuel double bottom tanks & to oil fuel deep tanks forward are fitted with double gauge.  
Air Pipes to cofferdams & oil fuel bunkers fitted with bolted steel covers.  
Elsewhere air pipes fitted with wood plugs.

Particulars of Gangway Cargo and Coaling Ports:—

Denbydale.

NONE.

Particulars of Scuppers and Sanitary Discharge Pipes:—

SANITARY DISCHARGES & SCUPPERS. from W.C.'s and washplaces in Bridge and upper Bridge Accommodation carried through ship's side above freeboard deck. W.C. discharges only fitted with brass storm valves.

SANITARY DISCHARGES. from W.C.'s and Washplaces in Poop space and from Accommodation in Poop House, carried through ship's side below freeboard deck and fitted with brass storm valves.  
SCUPPERS. 2" diam. from Poop space, carried through ship's side below freeboard deck, and fitted with brass storm valves inner end open in lavatories and Washplaces elsewhere in steering gear space, Refrig. machy. space, meat Room, Drying Room, and Passage (P. & S.) inner end fitted with non-detachable screw caps.

Particulars of Side Scuttles:—

FO'LE. 10" DIAM.  
BRIDGE. 10" DIAM.  
POOP. 10" & 12" DIAM.

All sidelights of substantial construction & fitted with hinged deadlights.

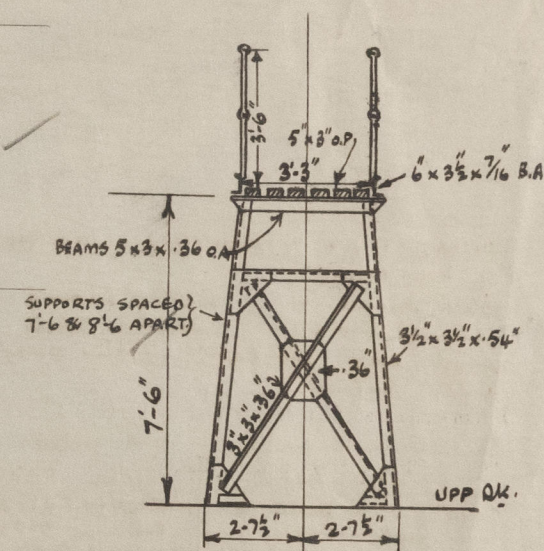
Vertical distance of Sill of lowest Side Scuttle above top of keel none below freeboard deck.

Particulars of Guard Rails:—

FO'LE DECK. open rails 3'-6" high with 3 rods & stanchions 5'-0" apart.  
BRIDGE DECK. open rails 3'-6" high with 3 rods & stanchions 5'-0" apart.  
POOP DECK. open rails 3'-8" high with 3 rods & stanchions 5'-0" apart.

Particulars of Gangways, Lifelines, etc.:—

Gangway as per sketch from Poop to Bridge and from Bridge to Fo'le.



Particulars of Freeing Arrangements.

WELLS	TOTAL LENGTH.	Length of Bulwark	Height of Bulwark	Size of Freeing Ports	Number each side	Area each side	Rule area each side
AFT	189'-4 1/2"						
FORW.	88'-11"						
AT BRIDGE END.		42'-6"					
After Well ...			3'-6"	8'-6" x 4"	2	1.6	OPEN RAIL 98'-10"
FOR OF POOP.		48'-5 1/2"		none			
FOR OF BRIDGE		18'-6"		2'-6" x 4"	1	.8	OPEN RAIL 42'-1"
ABART FO'LE.		28'-4"		none			

State position of each freeing port ... After Well:— 19'-6" and 39'-0" from Bridge End } 12" above deck.  
(F. and A. position and height above deck edge) Forward Well:— 1'-3" from Bridge front

State whether the freeing ports are fitted with shutters, bars, or rails, and give particulars of such:—

Additional area where sheer is less than standard.



# PARTICULARS OF PROTECTION TO OPENINGS, ETC.

HATCHWAYS ON FREEBOARD AND SUPERSTRUCTURE DECKS.									
FREEBOARD DECK.				SUPERSTRUCTURE DECKS.					
Description of Hatchway		HATCHES TO OIL TANKS.	D.T. MANHOLES TO COFFERDAMS & BUNKERS.	HATCH IN FORE TO STORE.	CARGO HATCH ON FORE.	STORE HATCH ON FORE.	HATCH ON POOP TO STORE (P. SIDE).	HATCH ON POOP TO STORE (S. SIDE).	
Dimensions of Hatchway		4'-0" x 3'-0"	24" x 18"	2'-0" x 2'-6"	8'-8" x 12'-0"	2'-0" x 2'-0"	1'-9" x 3'-0"	3'-0" x 3'-0"	
COAMINGS	Height above Deck	FORD WELL	FORD WELL	COAMING	30"	COAMING	COAMING	COAMING	
	Thickness	9 IN NO.	1 P. & S.	B.A.	.44	9 x 3 x .40 B.A.	9 x 3 x .40 B.A.	30" x .36"	
	Sides		TO FORWARD	9' x 3' x .40"	.44"				
	Ends	AFT WELL	COFFERDAM.	2 1/2" WOOD	7' x 3' x 3/8" B.A.	.40" STEEL	.40 HINGED	.40 HINGED	
	Stiffeners	18 IN NO.		COVER	AT ENDS	W.T. COVER	STEEL W.T. COVER	STEEL W.T. COVER	
	Brackets, Stays		AFT WELL.	3" BEARING	WITH ONE STAY.	TOGGLES.	TOGGLES.	TOGGLES.	
HATCH BEAMS	Number	COAMINGS	3 IN NO.	CLEATS	.30 HINGED				
	Spacing	30" x .40"	TO AFT	SPACED 12"	W.T. STEEL COVER				
	Scantling and Sketch	.40 HINGED	COFFERDAM.	15"	SECUED WITH TOGGLES 20"				
	Bearing Surface	STEEL COVERS	OIL FUEL BUNKER & SETTLING TANKS	1 TARPULIN.	APART.				
		15" APART	4 IN NO.		COVER STIFFENERS				
					7' x 3' x 3/8" B.A.				
					SPACED 2'-9"				
FORE AND AFTERS	Number		COAMINGS						
	Spacing		10 x 3 1/2 x 3/8 x .40						
	Unsupported Lengths		CHANNEL.						
	Scantling and Sketch		TWO STEEL COVERS						
	Bearing Surface		SECUED WITH TAP BOLTS						
			FITTED IN CHANNEL COAMING.						
HATCH COVERS	Material								
	Thickness								
	How fitted								
	Bearing Surface								
Spacing of Cleats									
Number of Tarpaulins									
<p>*Are wood fore and afters steel shod at all bearing surfaces? <input checked="" type="checkbox"/></p> <p>Are battens and wedges efficient and in good condition? <b>YES.</b> <input checked="" type="checkbox"/></p> <p>Are tarpaulins in good condition and in accordance with rule requirements? <b>YES.</b> <input checked="" type="checkbox"/></p> <p>Are lashings provided in accordance with rule requirements? <input checked="" type="checkbox"/></p>									

Particulars of any special features:—

Endorsement at first survey and at surveys for renewal of Certificate:—

The fittings and appliances are in accordance with the particulars shown on this form (or as now modified) and are in good condition.



© 2021

Lloyd's Register Foundation