

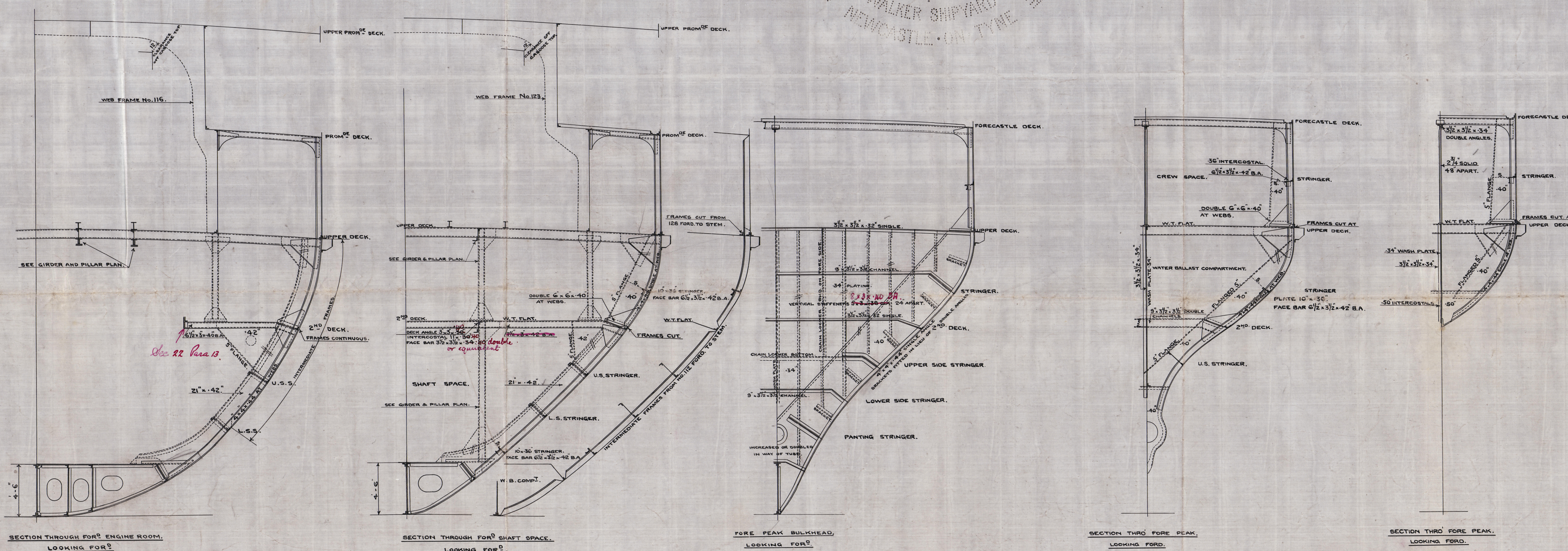
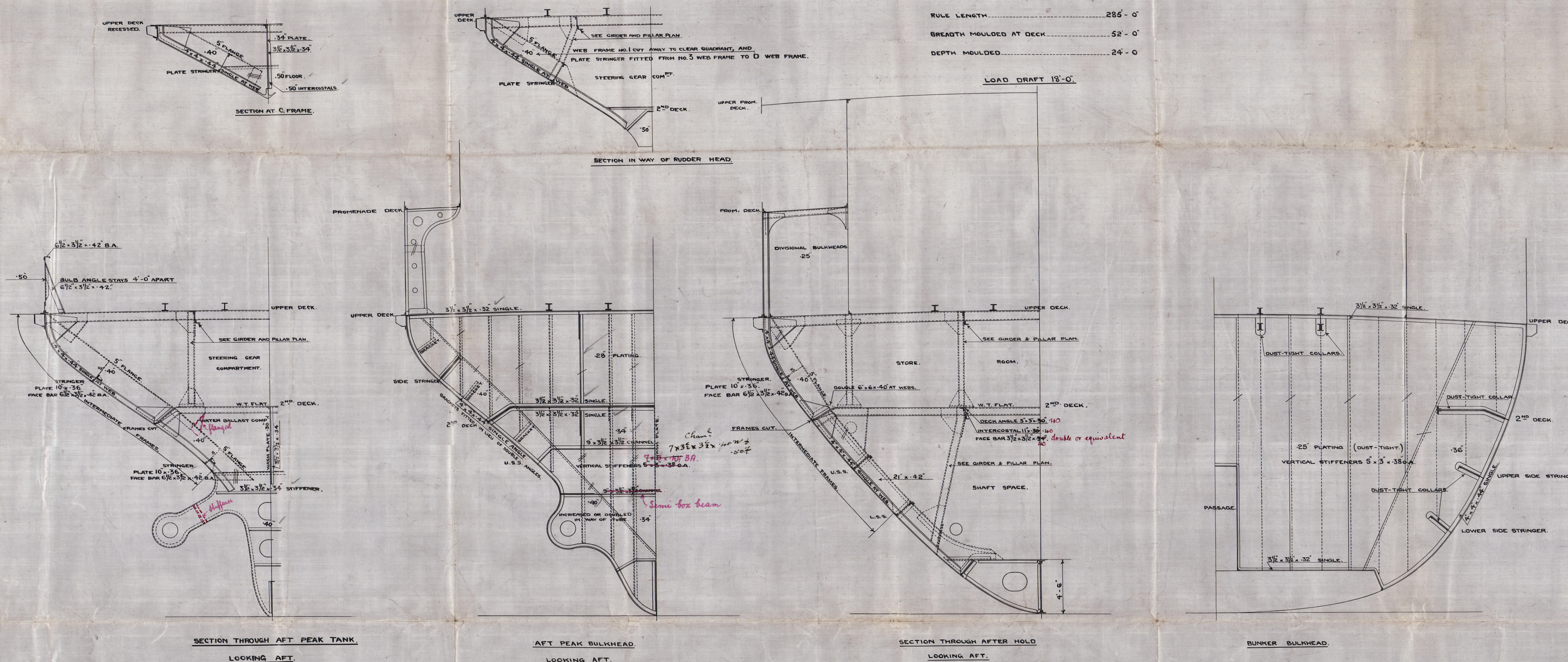
No. 868 SHIP.
END SECTIONS.
SCALE $\frac{1}{4}$ "=1 FOOT.

CLASS: + 100 A.I. LLOYD'S.

PRINCIPAL DIMENSIONS.

LENGTH OVER FENDER 300'-0"
RULE LENGTH 286'-0"
BREADTH MOULDED AT DECK 52'-0"
DEPTH MOULDED 24'-0"

LOAD DRAFT 18'-0"



W. G. ARMSTRONG & CO. LTD.
WALKER SHIPYARD
NEWCASTLE-ON-TYNE

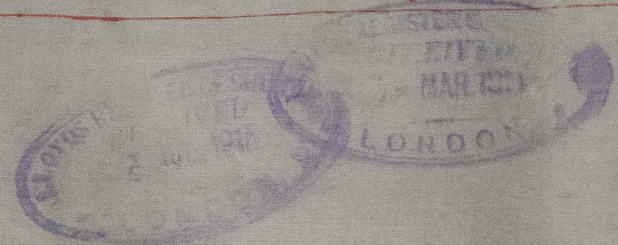
W. G. ARMSTRONG & CO. LTD.
NEWCASTLE-ON-TYNE.
NO. 3456 DATE 8-7-13.
WALKER SHIPYARD.

16-7-13

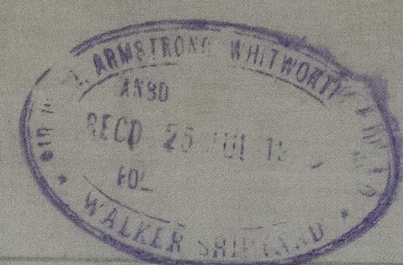
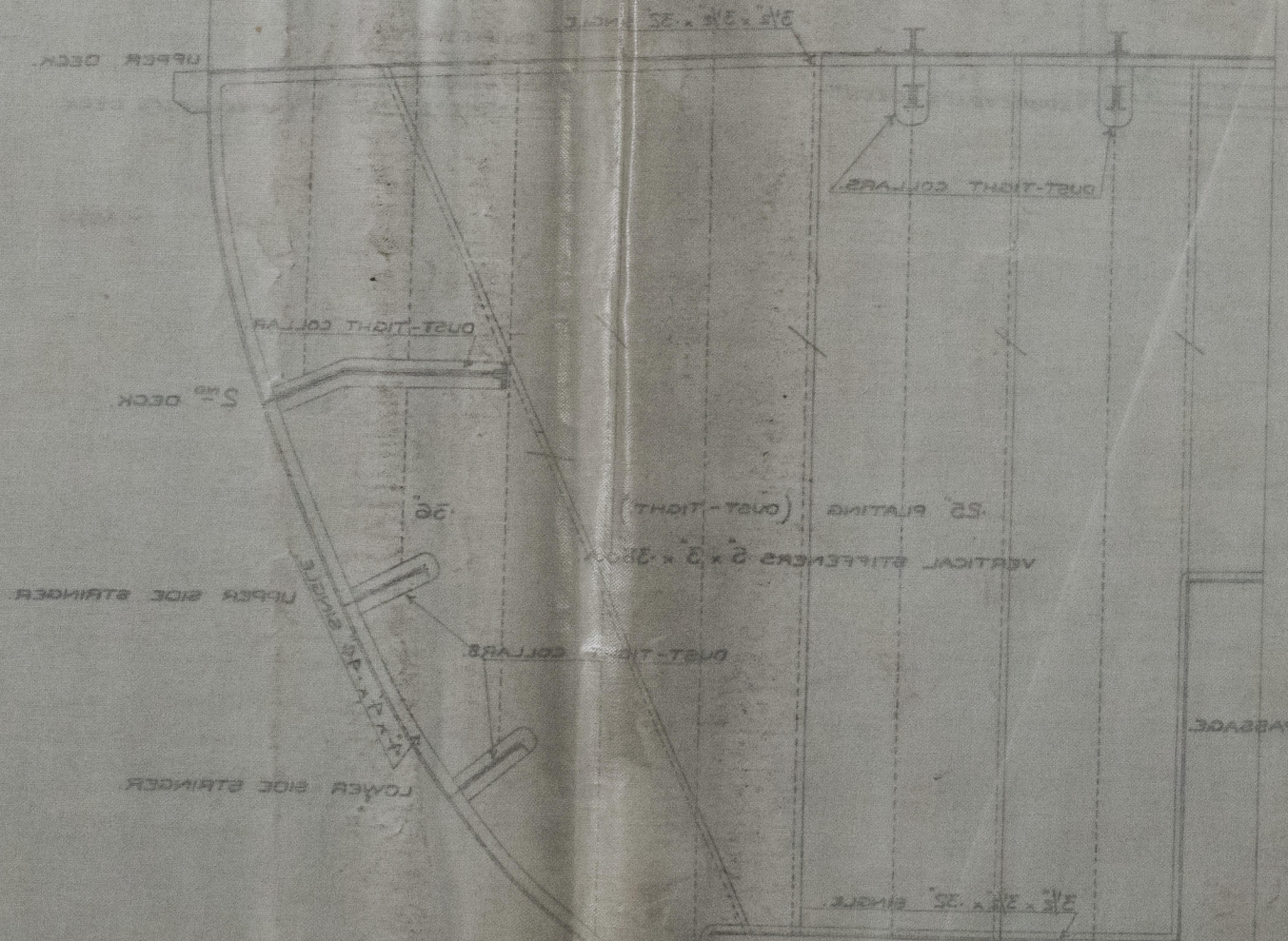
Armstrong Whitworth
& Co. L^d
No. 868

End Sections

S.S. PRINCE EDWARD ISLAND
NEWCASTLE-ON-TYNE
REPORT No. 67703



006780-006786-01050



006780-006786-01050

No. 868 SHIP
END SECTIONS

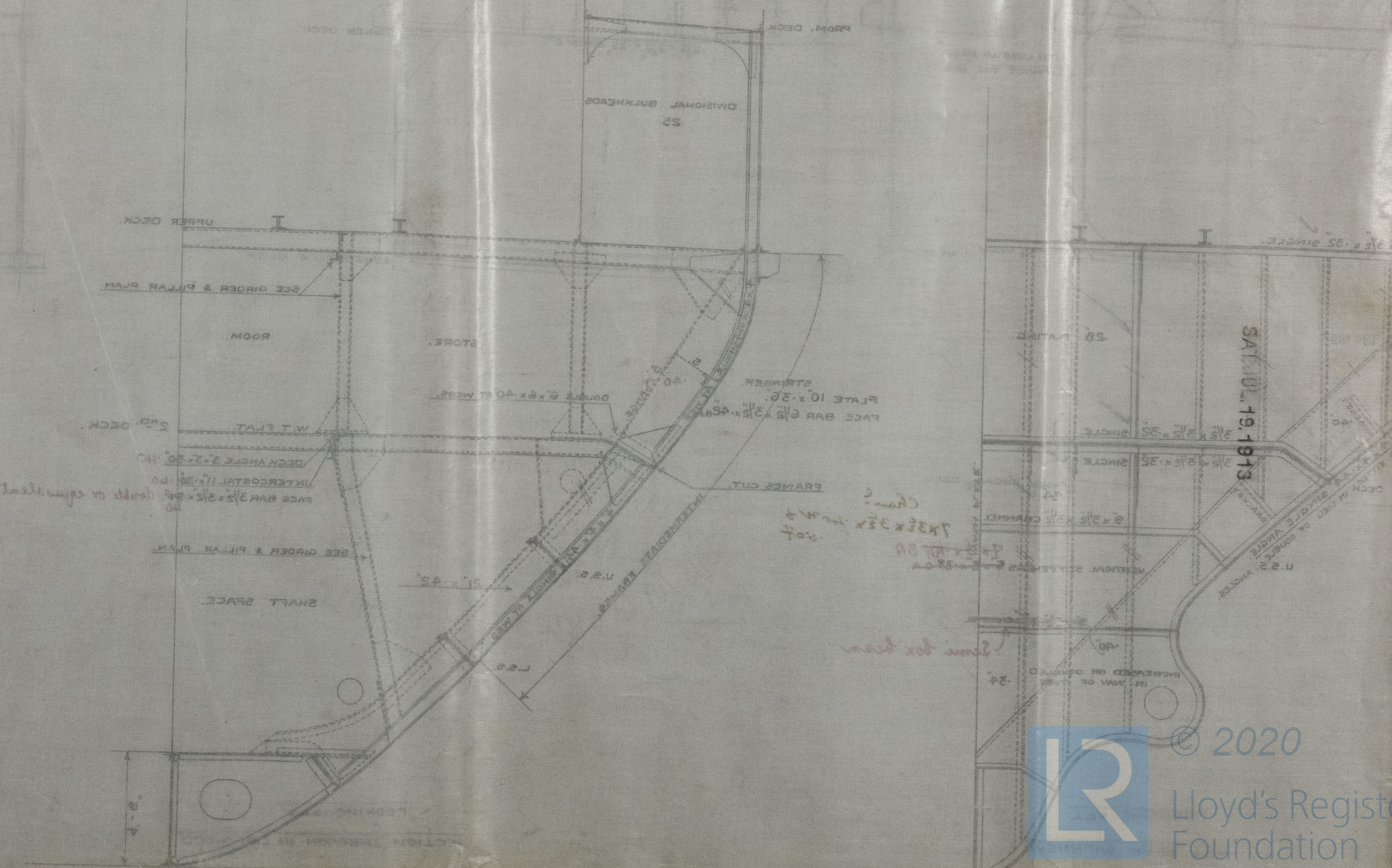
SCALE 1/4" = 1 FOOT

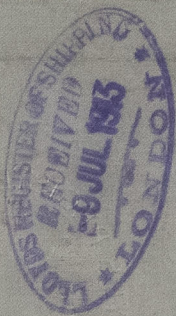
CLASS: 4 100 A. I. LLOYD'S

PRINCIPAL DIMENSIONS

LENGTH OVER FENDER	300'-0"
RULE LENGTH	282'-0"
BREADTH MOULDED AT DECK	25'-0"
DEPTH MOULDED	54'-0"

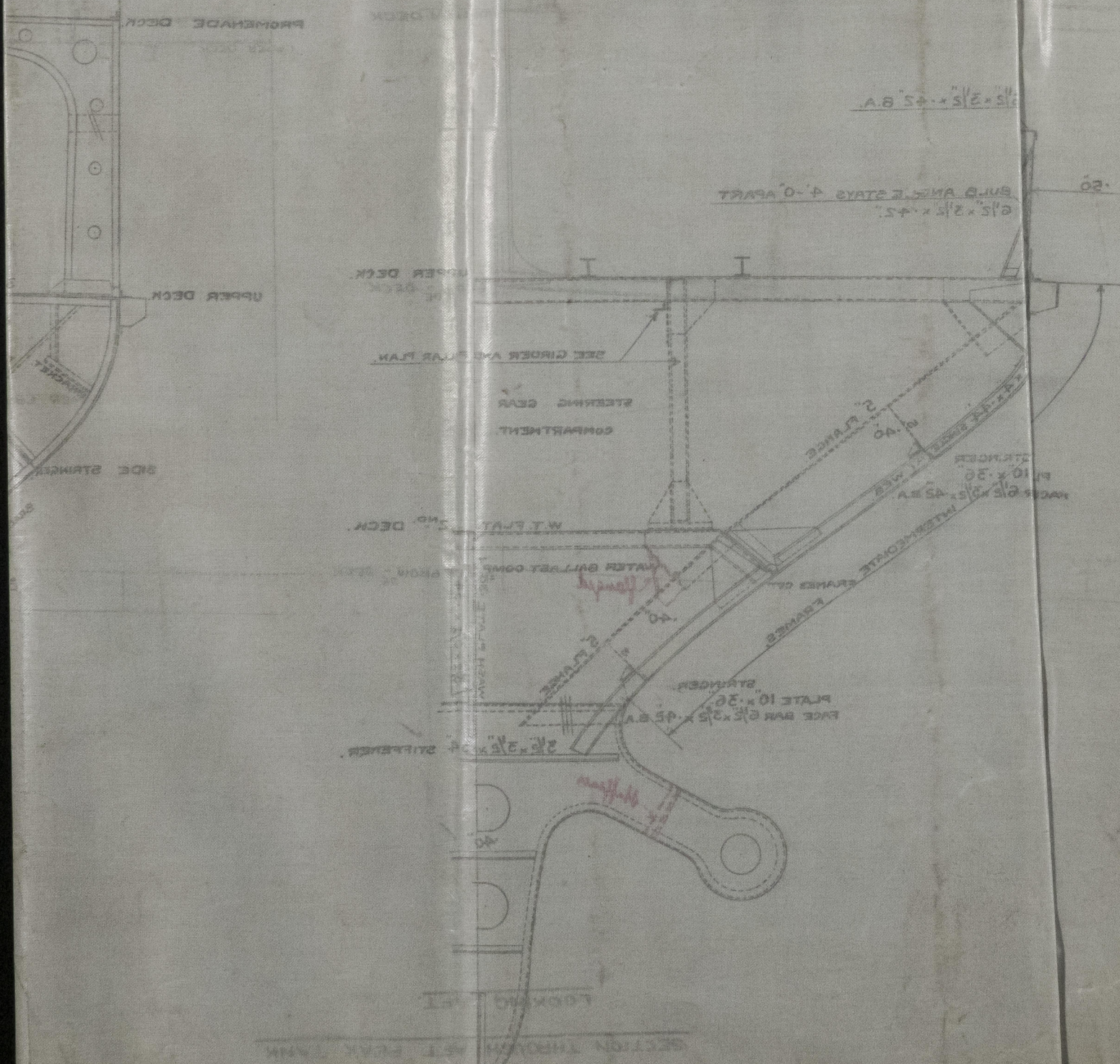
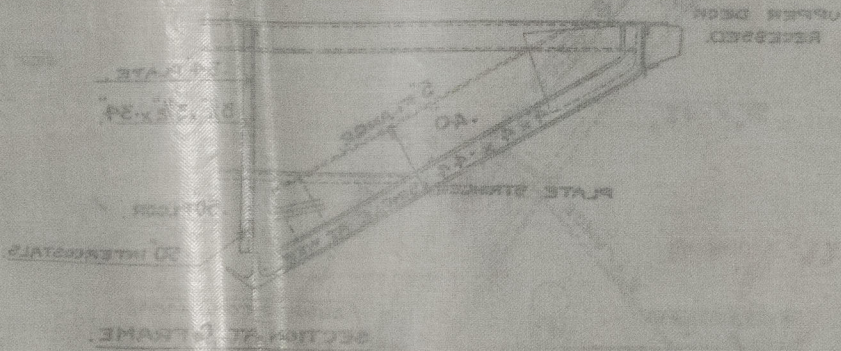
LOAD DRAFT 18'-0"





OS 10-2879-0-2879-0-10

11.7.13
11.7.13



© 2020
Lloyd's Register
Foundation