

Lloyd's Register of Shipping.

SURVEYS FOR FREEBOARD - STEAM SHIPS.

25434

PARTICULARS RELATING TO ALL STEAM SHIPS EITHER FLUSH DECKED, OR WITH TOP GALLANT FORECASTLES, SHORT POOPS AND BRIDGE HOUSES DISCONNECTED, OR WITH TOP GALLANT FORECASTLES HAVING LONG POOPS, OR RAISED QUARTER DECKS CONNECTED WITH BRIDGE HOUSES, OR OTHERWISE.

Port of Survey Newcastle
Date of Survey 14th November 1917
Name of Surveyor A.R. Sudder

Ship's Name R DAFFODIL Port of Registry London Official Number 140421 Gross Tonnage 4730.70 Date of Build 1917 Particulars of Classification + 100 A. 1. (Contingent)
Register Book 43 in Supp. British

LENGTH. 400.2 BREADTH. 52.3 DEPTH. 28.45 UNDER DECK TONNAGE. 4730.70

Frame Depth 11 1/2 Ceiling +20 Peak Rule 5 1/2 Sheer +1.11 Tanks Included.

00.0 - .92
00.0 51.38 29.76 4730.70

Less .773
necessary .02 Cell. & Bottom (e) 75

120° 180 ÷ 2 = 90° Mean
length from Stem 67° Sternpost 34° 101 ÷ 2 = 50.5 Mean
er 91.8 .55 = 91.8
er [Table, Para. 18] 50.0 Correction
Difference 41.8 ÷ 4 = -10 1/4
ra. 18 (f) 40.9 -10 1/4

At front of bridge house. ☒
At after end of forecastle ☒

÷ 2 = ☒ Correction

ALLOWANCE FOR DECK ERECTIONS :-

Length, if required (Para. 12, 13, and 14) 4.9
e A. corrected for sheer, and for length, required (Para. 12, 13, and 14) + 2 1/4
4.11 1/4
7.4 1/2
2.5 1/2
32.12 1/2

Dk. if engine and boiler openings not in bridge house (Para. 11) ☒
Erections - 9 1/4

Length.	Length allowed.	Height.
<u>38.75</u>	<u>38.75</u>	<u>7.11 1/2</u>
<u>112.66</u>	<u>112.66</u>	<u>7.11 1/2</u>
<u>49.25</u>	<u>49.25</u>	<u>7.11 1/2</u>
<u>200.66</u>	<u>200.66</u>	<u>7.11 1/2</u>
	<u>400.0</u>	<u>= 50.16</u>

Percentage (Para. 14) 32.12 1/2

recommended amidships from centre of Disc to top of Statutory Deck Line, Wood (Iron) Deck :-
Fresh Water Line above centre of Disc
Indian Summer Line " " "
Winter Line below " "
Winter North Atlantic Line " " "

Moulded Depth as measured 31.0
Addition for Keel below base line for draught record 2 1/2 inches.

CORRECTION FOR LENGTH.

Length of Ship on Loadline 400.0
Length in Table 372.0
Difference 28.0
Correction for 10ft., Table A. 1.6 Table C. .8
× Difference divided by 10 4.48 (if required.) 2.24
If 10ths length covered divide by 2 +4 1/2 +2 1/4

CORRECTION FOR IRON DECK.

Proportion covered, if less than 70ths length covered .501
Thickness of usual wood deck, less stringer 3 1/2 - 1 1/4

CORRECTION FOR ROUND OF BEAM.

Breadth at Gunwale amidships 52.0
Round of Beam 13
Normal round 13
Difference ÷ 2 =
Proportion of Deck uncovered (Para. 19)

Freeboard, Table A 7.10 1/2
Correction for Sheer - 10 1/4
Correction for Length + 4 1/2
Allowance for Deck Erections 7.4 1/2 3/4
Correction for Round of Beam - 9 1/4 1/2
Correction for fall in Sheer (if any) ☒
Correction for Iron Deck (if required) - 13 1/4
Additions for non-compliance with provisions of Para. 11 (d) and (e) 6.5 1/2
Other Corrections (if any) ☒

Winter Freeboard 6.5 1/2
Summer Freeboard 6.0
Indian Summer Freeboard 5.6 1/2
N. A. Winter Freeboard

Correction necessary because clearside amidships, measured in accordance with the Statute is not taken at the intersection of the wood or iron deck with side. 13 1/4

Winter Freeboard from deck line 6.7 1/4
Summer " " " 6.13 1/4
Indian Summer " " " 5.8 1/4
N. A. Winter " " " 6.1 1/2

6.1 1/2
6 1/2
5 1/2
5 1/2

the frames of ceiling shown, or ceiling are of unusual thickness the breadth of vessel to inside vessels obtaining an amidships if possible. ships the height of the R.Q.D. for deck erections under Para. 11 where the sheer drops abaft amidships. In vessels having poops and forecastles the sheer measured at the stem and stern, one eighth of the vessel's length from stem and stern.

RECEIVED 27 JAN 27 MARKING FORM

RECEIVED 8 MAR 1923 MARKING REPORT

RECEIVED 20

© 2021

Lloyd's Register Foundation

Do all the Frames extend to the top height in the Poop? *Yes* ~~Raised Quarter Deck?~~ *Yes* ~~Bridge House?~~ *Yes* ~~Forecastle?~~ *Yes*

To what height do the Reverse Frames extend? *to upper deck*

Has the Poop or Raised Quarter Deck an efficient Iron Bulkhead at the fore end? *Yes*

Give particulars of the means for closing the openings in Bulkhead *Two openings closed with hinged wood doors*

Is the Poop or Raised Quarter Deck connected with the Bridge House? *No* Has the Bridge House an efficient Bulkhead at the fore end? *Yes*

Give particulars of the means for closing the openings in Bulkhead *Two openings closed with steel hinged doors*

What is the thickness of the Bridge Front plating? *.40* and Coaming plate? *.44*

Give scantlings and spacing of the Stiffeners *9x3 1/2 x 56 B.A. spaced 27/29 apart*

Are bracket plates fitted at each end of the Stiffeners? *Yes* Are hor'l. brackets fitted connecting Bridge Bulk'd. with Bulwarks? *Yes*

Has the Bridge House an efficient Iron Bulkhead at the after end? *Yes*

How are the openings closed? *Two openings closed with shifting board full height in riveted channels*

Is the Forecastle at least as high as the main or top-gallant rail? *Yes* Has the Forecastle an efficient Iron or Wood Bulk'd. at after end? *Yes*

Are the Engine and Boiler openings covered by a Bridge, Poop, Raised Quarter Deck, or enclosed by a Strong Iron or Steel Deckhouse? *Covered by the Bridge deck*

If the openings are not so protected are the exposed parts of the Casings efficiently constructed?

Give thickness of plating; scantlings and spacing of Stiffeners

What is the height of the exposed Casings? *Yes* Are suitable means provided for closing all openings in them in bad weather? *Yes*

Are the Weather Deck Hatchways efficiently constructed and at least equal to the requirements of Section 28 of the Rules for 1904-5? Give particulars below:—

Position and Size.	32'6" x 26'0"		34'8" x 26'0"		10'10" x 18'0"		34'8" x 26'0"		30'4" x 26'0"	
Item.	Ship.	Rule.	Ship.	Rule.	Ship.	Rule.	Ship.	Rule.	Ship.	Rule.
Height above top of DECK	30'	30'	30'	30'	18'	18'	30'	30'	30'	30'
COAMING Thickness	Sides	.44	.44	.44	.44	.44	.44	.44	.44	.44
	Ends	.44	.44	.44	.44	.44	.44	.44	.44	.44
SHIFTING BEAMS OR WEB PLATES	Number	6 webs	6 webs	3 fore & aft webs	6 webs	6 webs	5 webs	5 webs	5 webs	5 webs
	Section and Scantlings	Plat. 21x38	Same as No. 1	Plat. 10x30	Same as No. 1	Same as No. 1	Same as No. 1	Same as No. 1	Same as No. 1	Same as No. 1
	Material	6x3 1/2 x 46		after 3.3.40						
* FORE AND AFTERS	Number									
	Section and Scantlings									
	Material									
HATCHES Thickness		2 1/2	2 1/2	2 1/2	2 1/2	2 1/2	2 1/2	2 1/2	2 1/2	2 1/2

* The depth of Fore and Afters should be stated from the underside of the hatches in all cases.
 (If the sill of the lowest side scuttle will be less than 6 inches above the Indian Summer Load Line if assigned under the tables, state vertical distance from top of deck at side amidships to lower edge of lowest side scuttle.)

The following information is to be given in all Cases of vessels dealt with under Paras. 11, 12 (under 15 feet Moulded depth) and under Shelter Deck Rules.
 What is the thickness of the Bridge Sheerstrake? *Strake between Main and Bridge Sheerstrakes?*

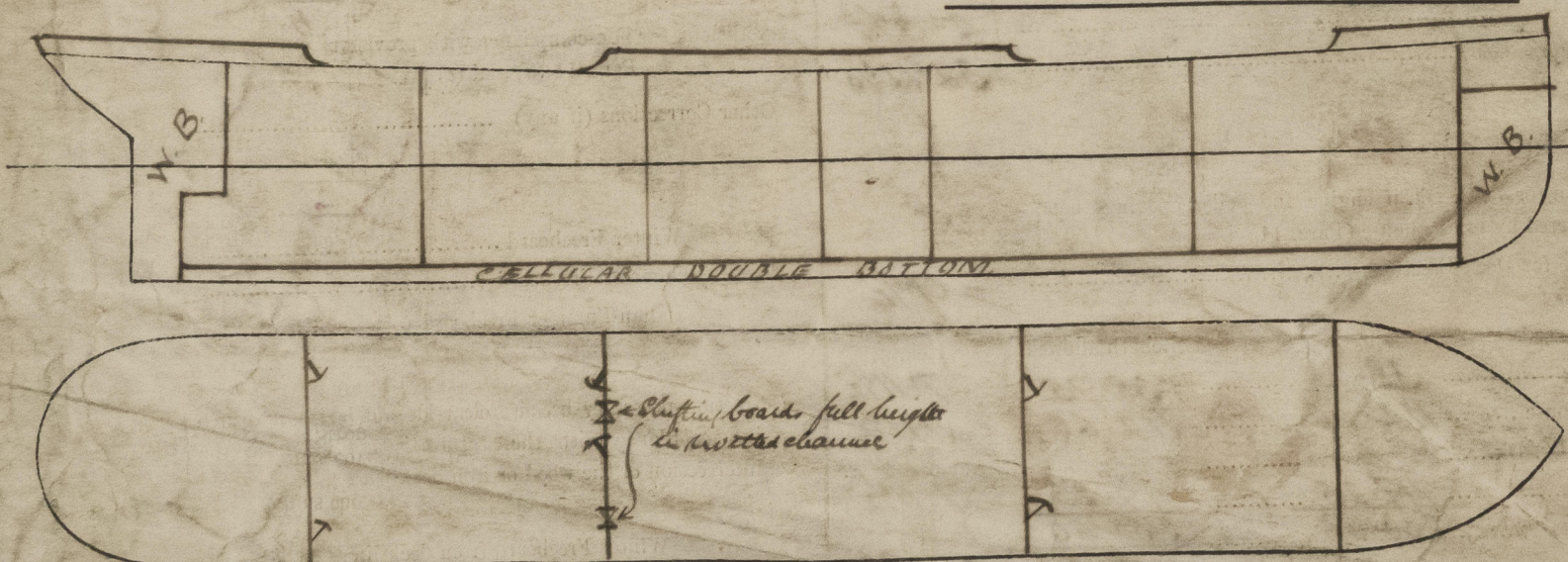
Delete the words *The Crew are, are not, berthed in the bridge house.*
 that do not apply *The arrangements to enable them to get backwards and forwards from their quarters are, are not satisfactory.*

Length of Bulwarks in well

Area of Freeing Ports required by Para. 11 (e) each side of vessel = Sq. ft.

Ft.	Tenths.	Ft.	Tenths.	No.	} Freeing Ports (each side of vessel) =	Sq. ft.
x	x	x	x			
x	x	x	x			

Total deficiency or excess = Sq. ft.



Show hereon line of Floors or Tank Top with position of any Breaks in same; also height of Peak Tank tops, &c., &c.

State any special features in the construction of the Vessel *This vessel has been built in accordance with the approved plans (3 in No.) forwarded herewith. A Freeboard request form is attached hereto.* *A.K. Sweden*

Owners

Address

Fee £

Received by me