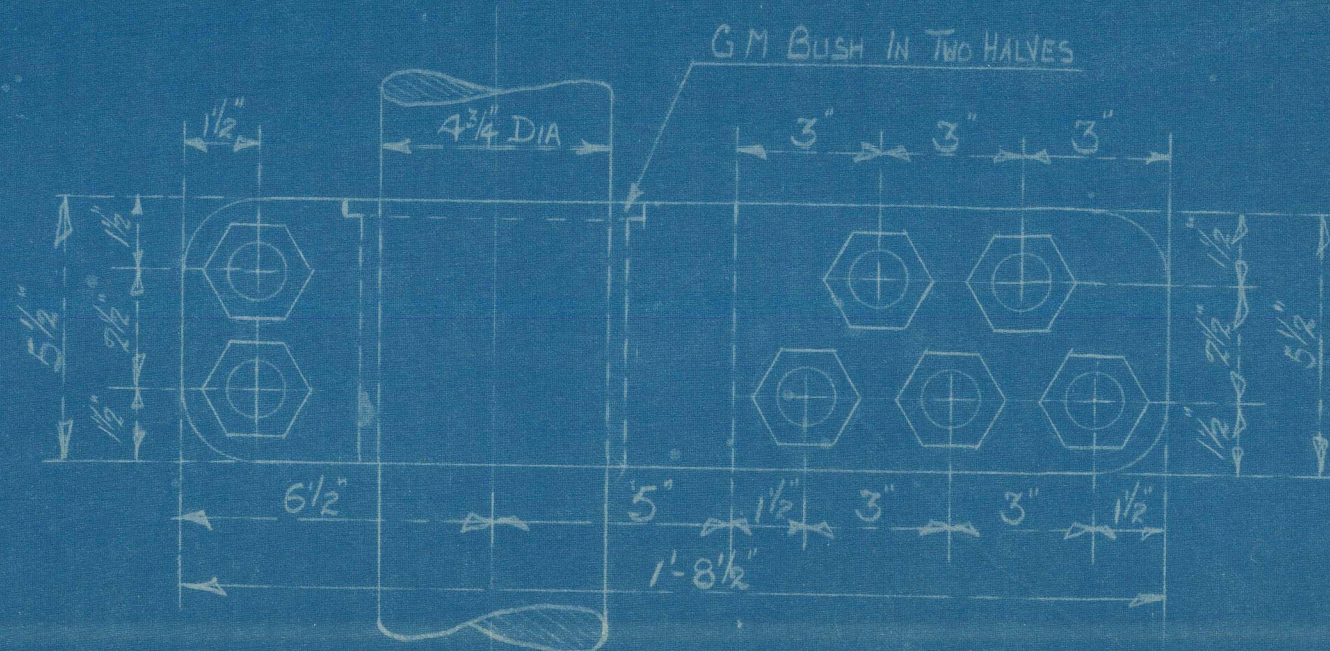
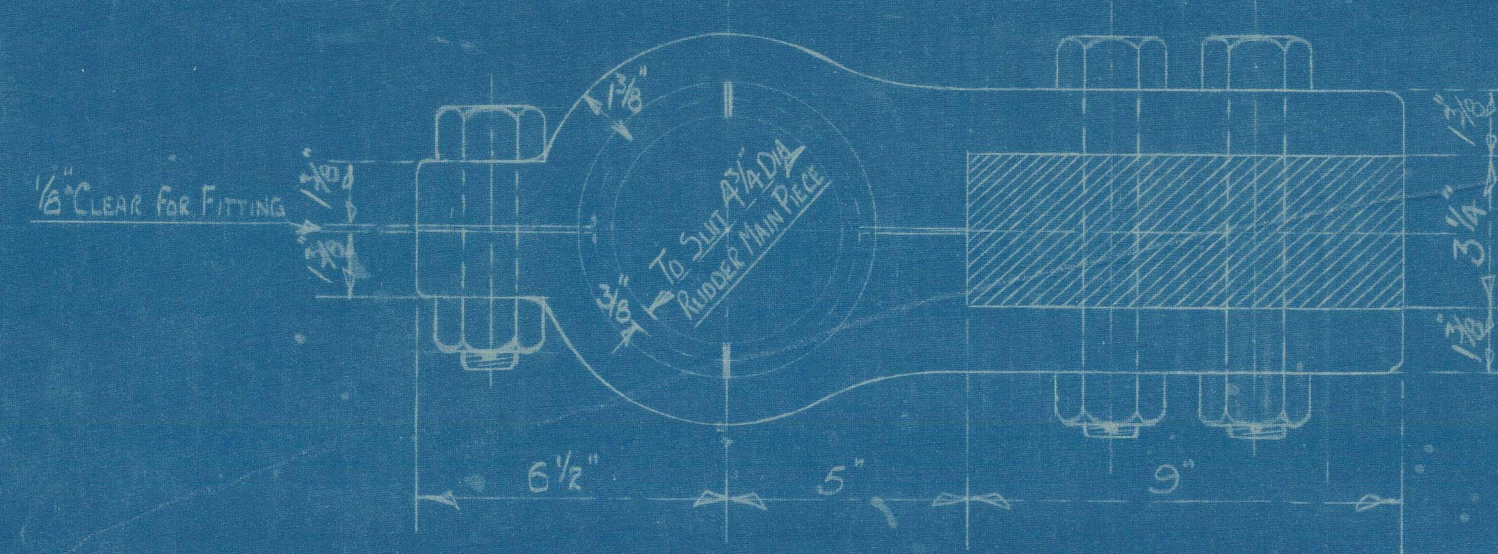


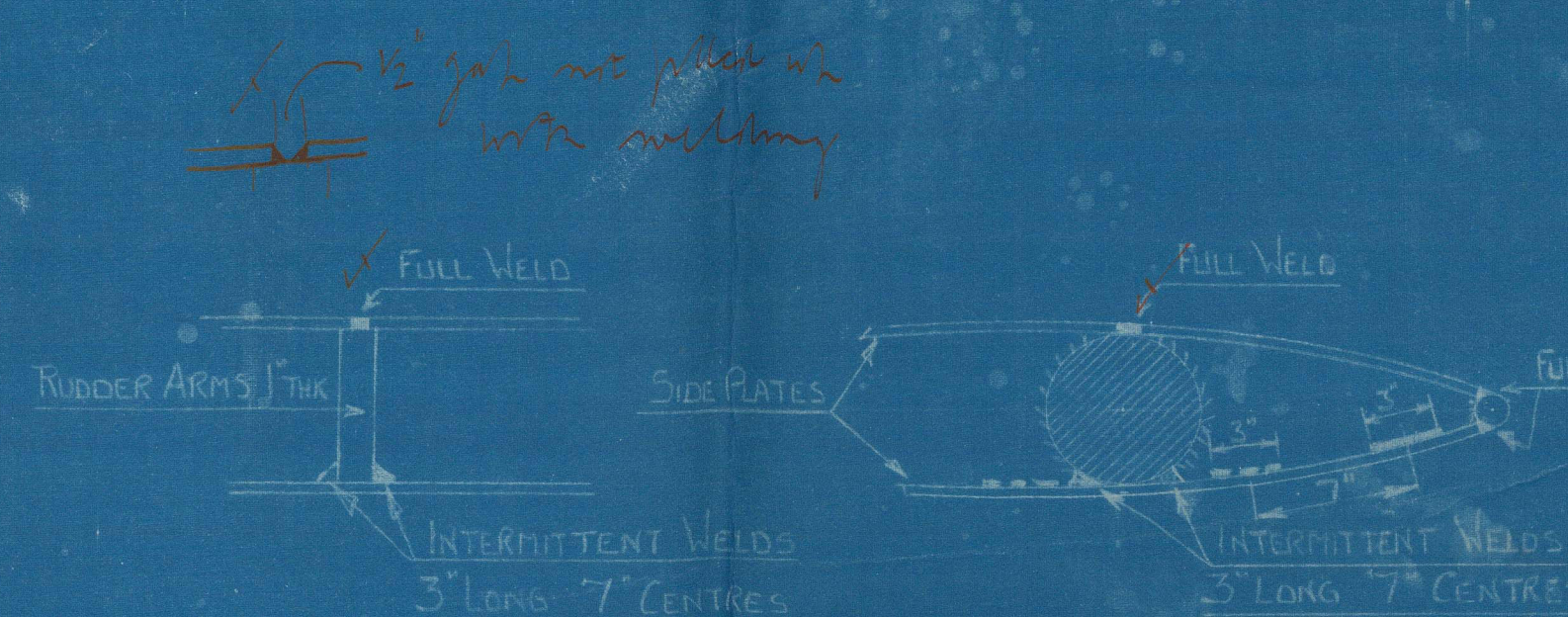
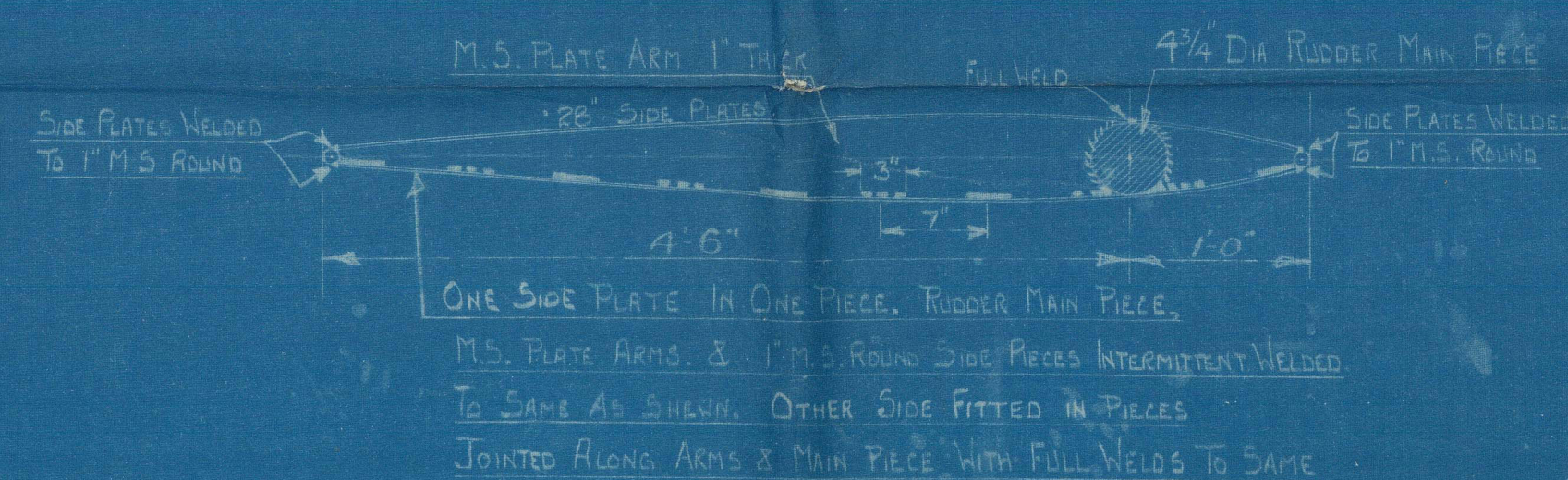
# CAST STEEL CLASP SCALE 3" = 1 FOOT



ALL HOLES IN CLASP DRILLED 1 1/8" DIA TO BE REAMERED OUT ON SHIP FOR 1 1/8" DIA TURNED STEEL BOLTS

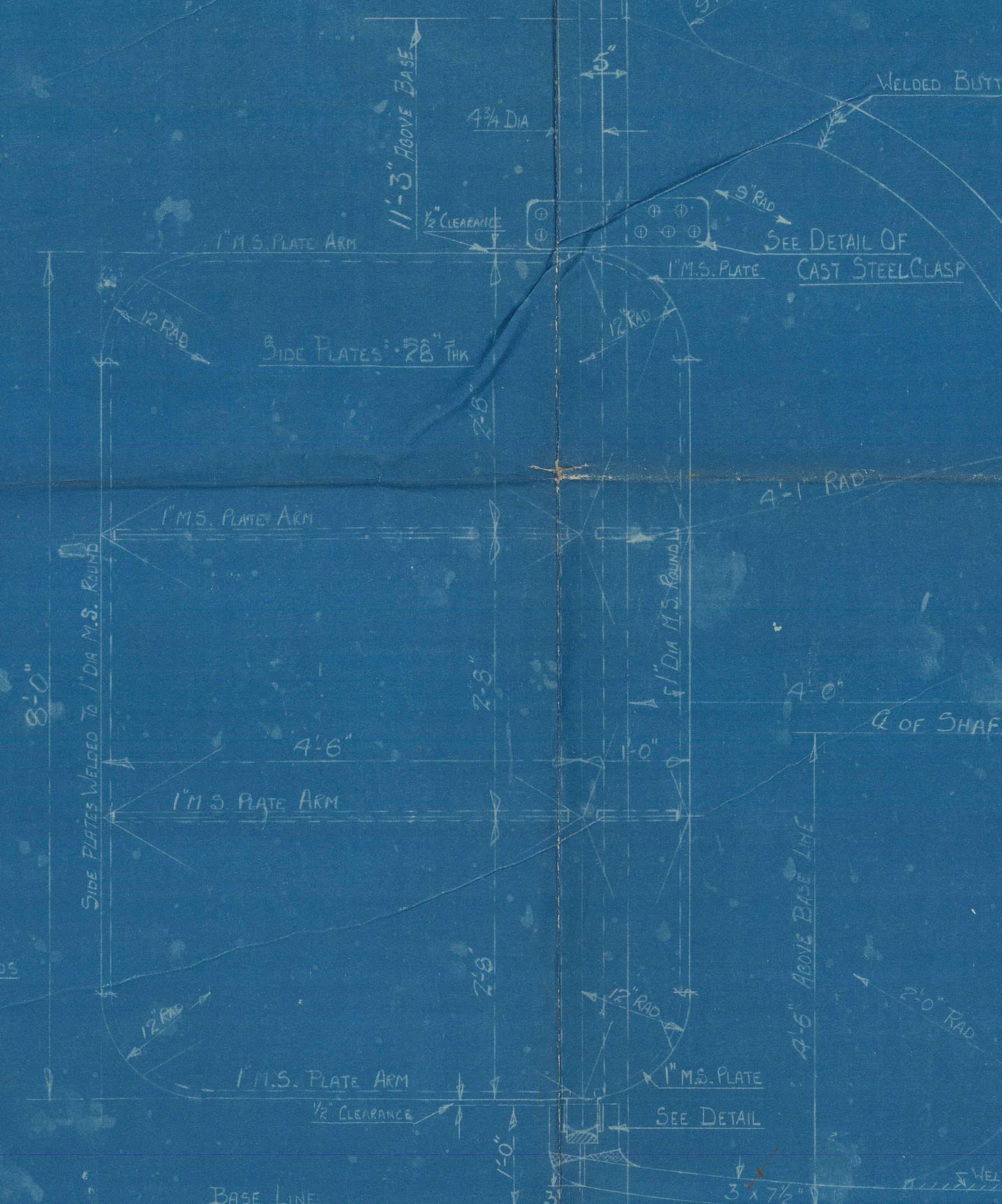
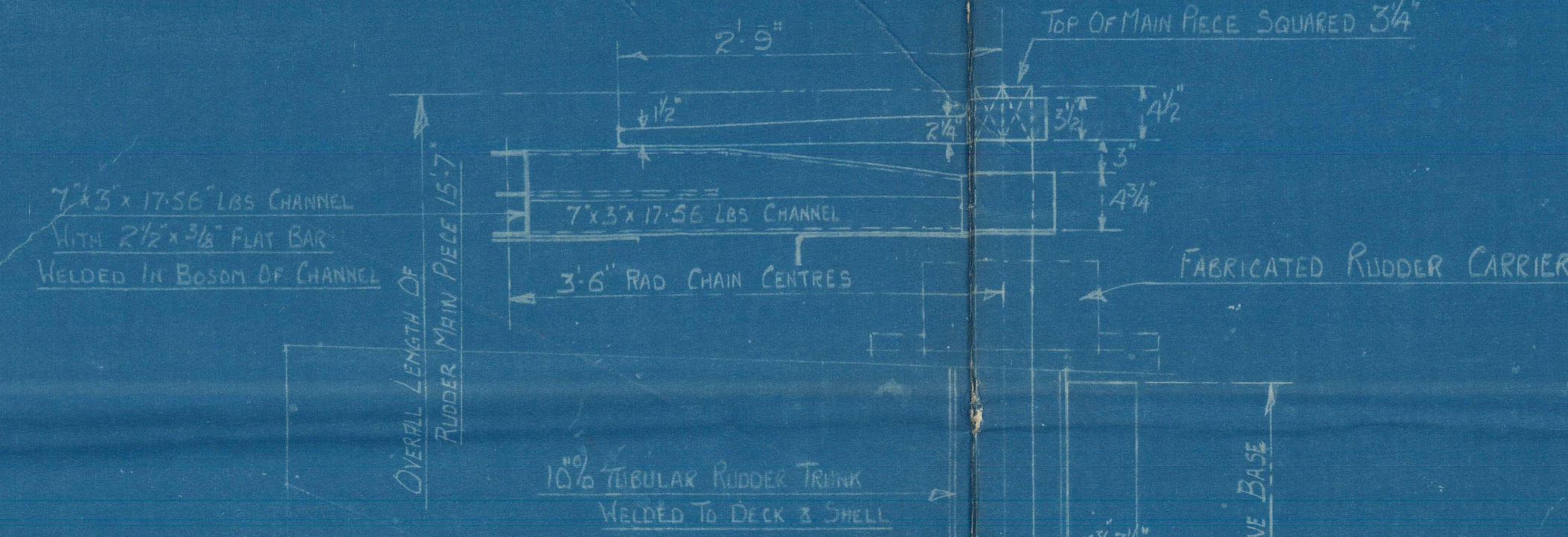


## DETAIL OF RUDDER ARM

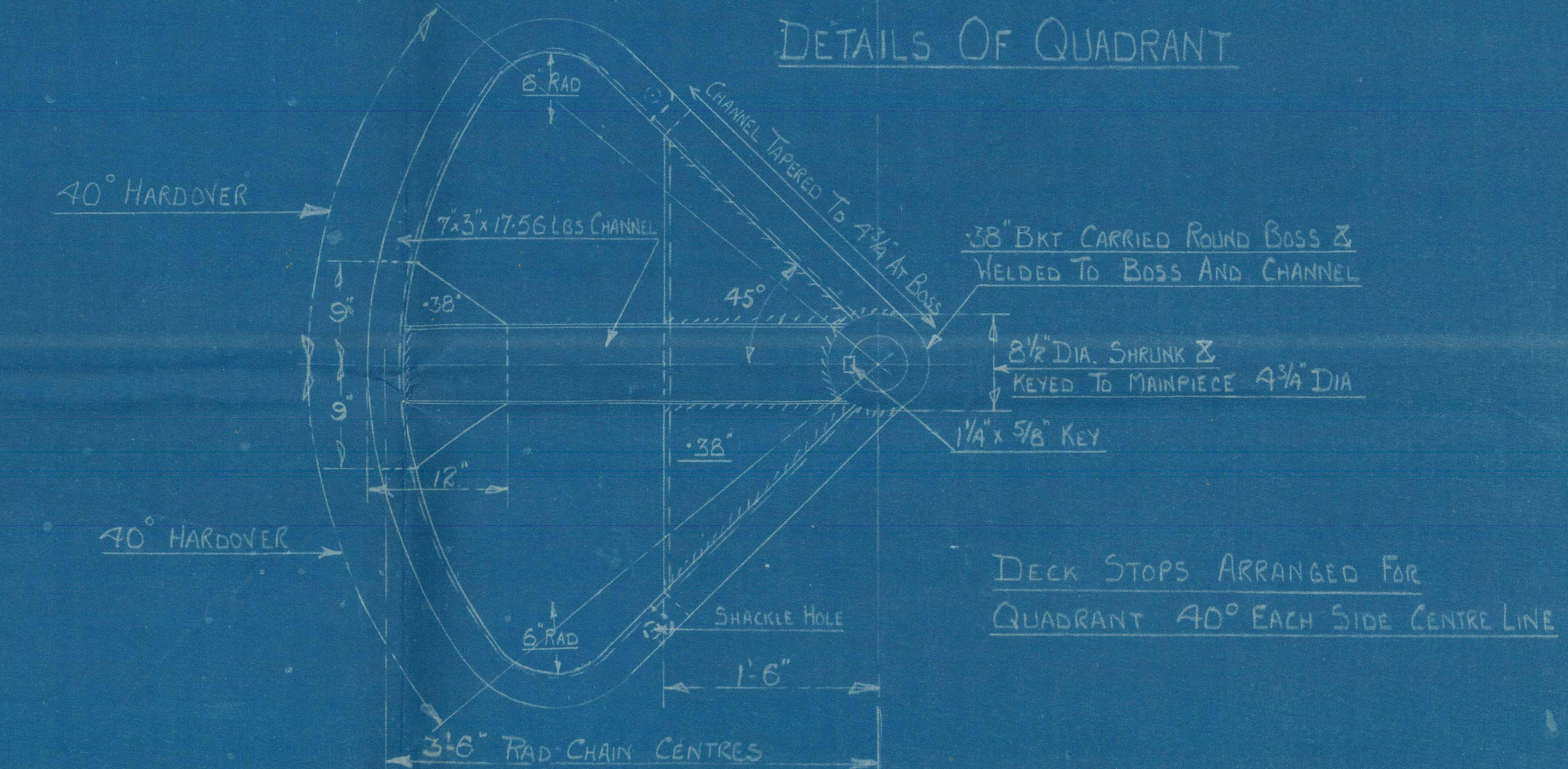


## WELDING DETAILS

A x D = (43.142 x 1.75) = 75.5  
DIAM OF RUDDER HEAD = 4 1/4"  
RADIUS OF QUADRANT = 3' 6" CHAIN CENTRES  
DIAM OF STEERING CHAINS = 3 1/4"  
DIAM OF STEERING RODS = 1 3/16"  
SPEED NOT EXCEEDING 12 KNOTS

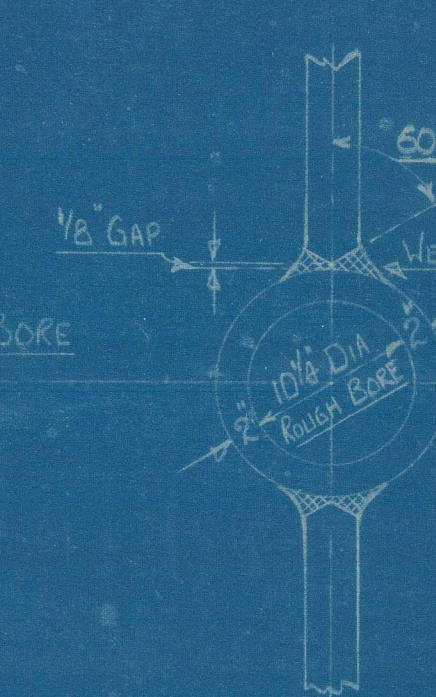


## DETAILS OF QUADRANT

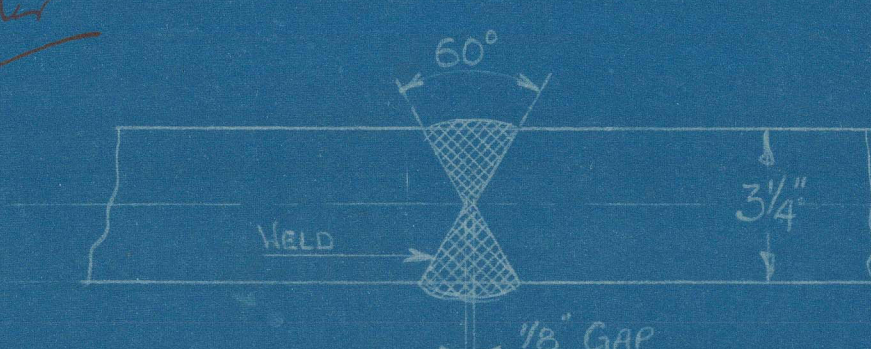
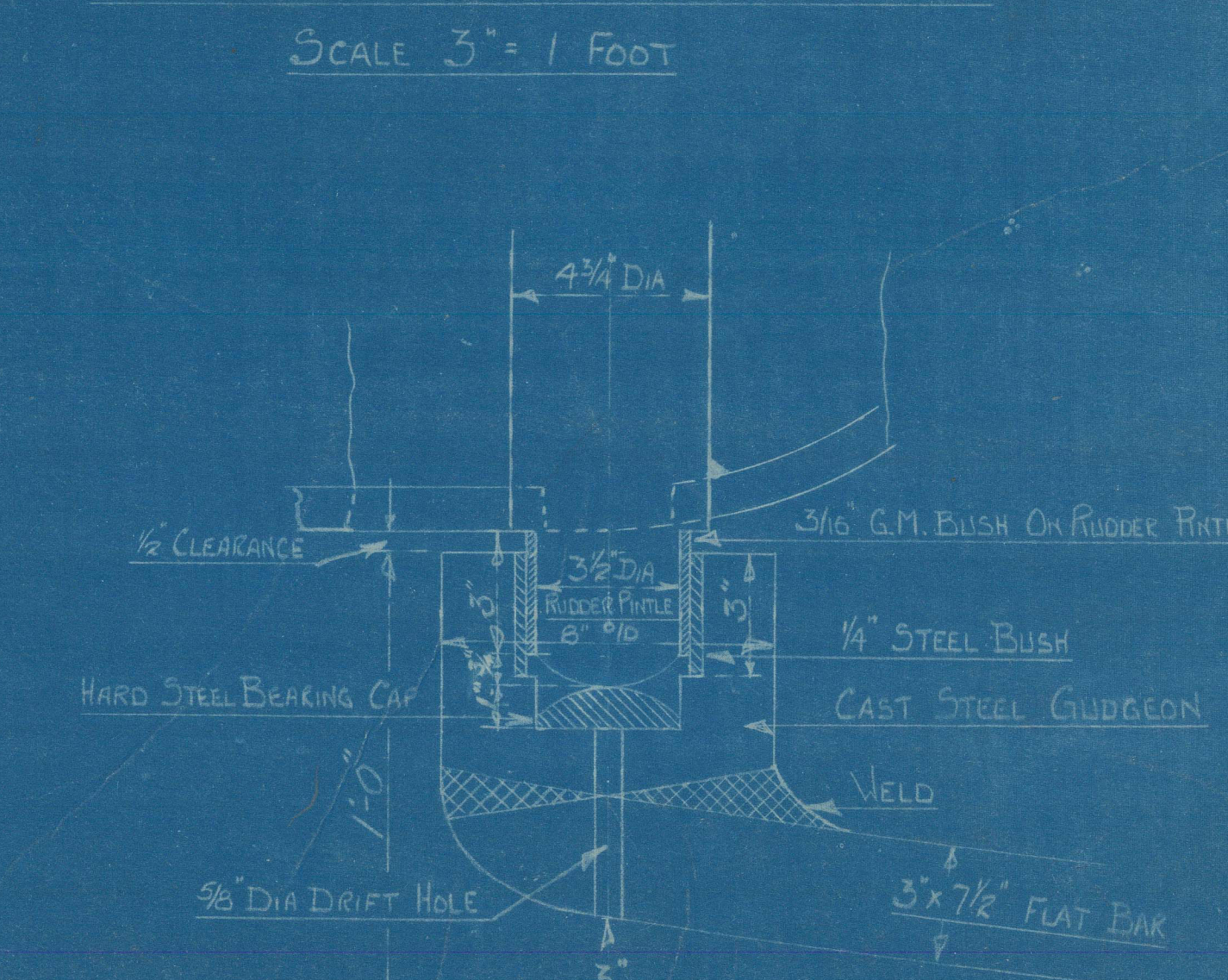


DECK STOPS ARRANGED FOR QUADRANT 40° EACH SIDE CENTRE LINE

## DETAIL OF BOSS



## DETAIL OF BOTTOM PINTLE & GUDGEON



## DETAIL OF WELDING STERNFRAME

RICHARD DUNSTON LTD.  
SHIPBUILDERS,  
THORNE, YORKSHIRE

|             |      |
|-------------|------|
| DRAWN BY    | DATE |
| TRACED BY   | DATE |
| CHECKED BY  | DATE |
| REVISIONS   |      |
| No.         | DATE |
| PARTICULARS |      |

This Drawing and the Information it contains are the Property of RICHARD DUNSTON LTD. It is not to be Traced, Copied or Published without their Written Consent, nor is the Information thereon to be misused in any way.

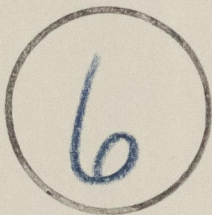
YARD No. S425/7 DRG. No. 2961  
TITLE:- RUDDER & STERNFRAME  
SCALE:- 1" = 3" TO ONE FOOT



"C. 606" ★

*Stemframe & rudder*

RECORDS DEPT.,  
LONDON



© 2021

Lloyd's Register  
Foundation

007432-007438-0135