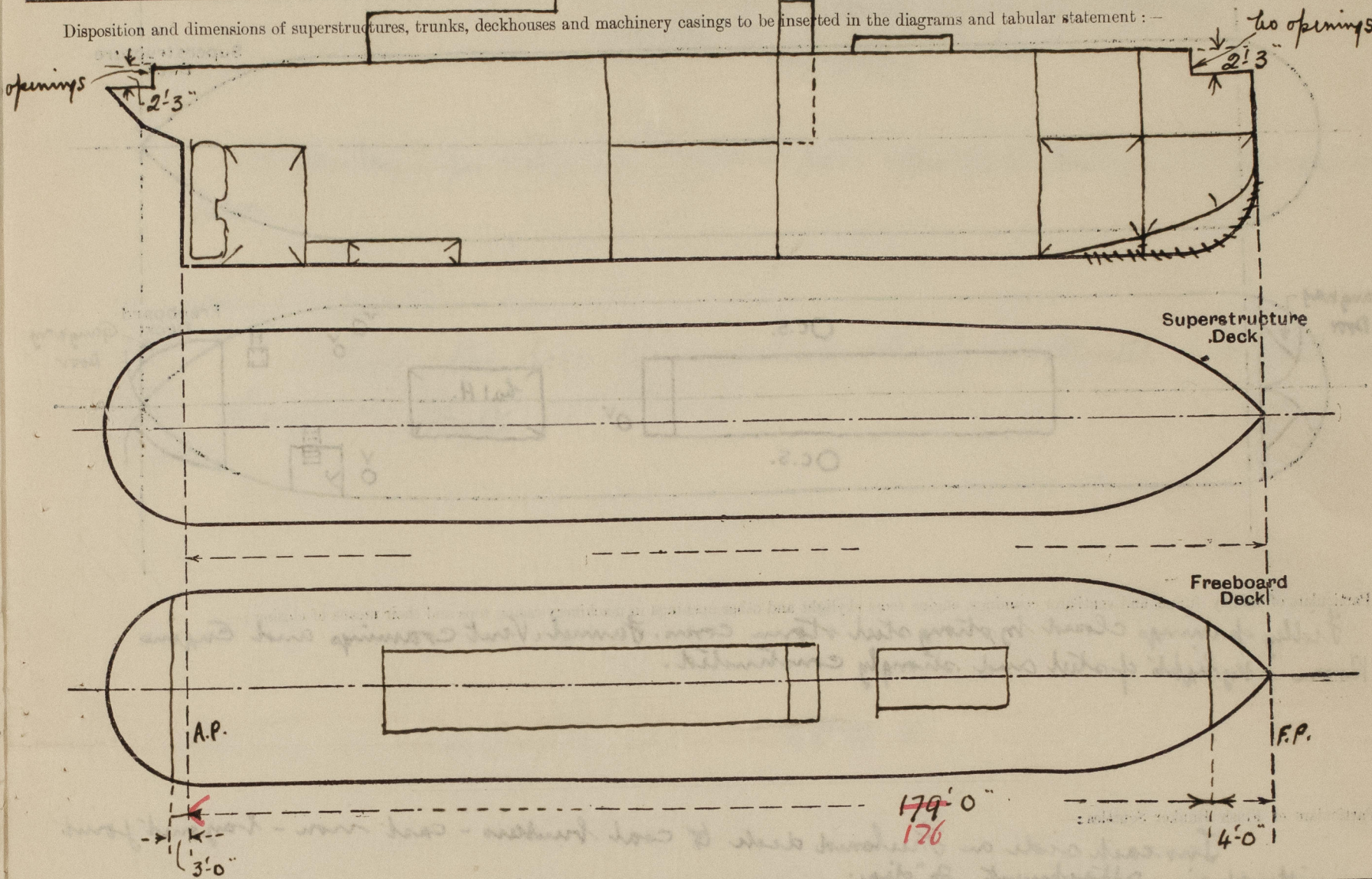


Lloyd's Register of Shipping.
SURVEYS FOR FREEBOARD.
(CONDITIONS OF ASSIGNMENT.)

Ship's Name "SARKOY". Port of Survey Newcastle-on-Tyne.
Official Number Surveyor's Signature E.W. Dean.
Nationality and Port of Registry Newcastle Date of Survey During construction.

Disposition and dimensions of superstructures, trunks, deckhouses and machinery casings to be inserted in the diagrams and tabular statement: -



Particulars of Superstructures, Trunks, Casings, Deckhouses.

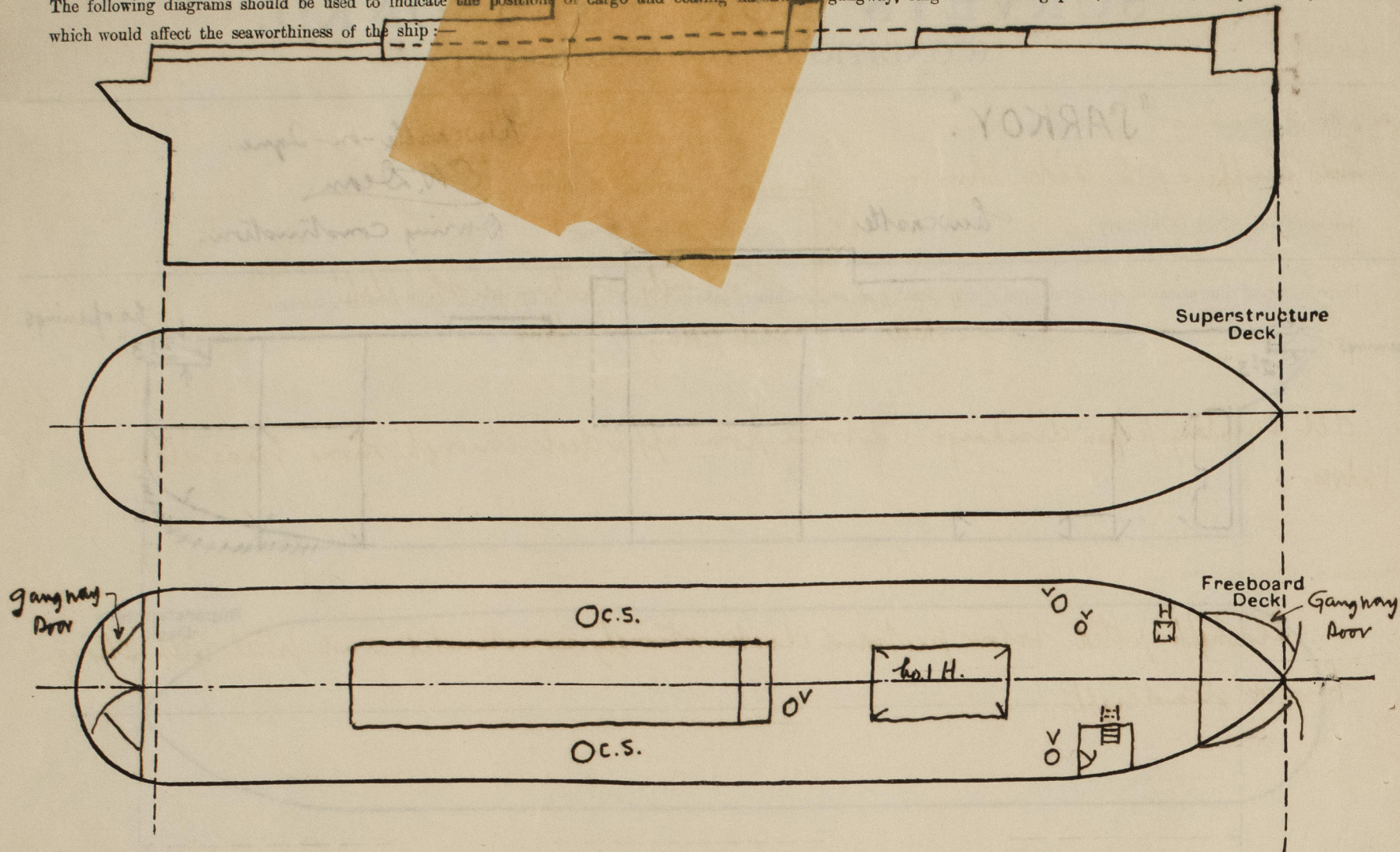
	Coaming	Plating	Stiffeners	Spacing	End Attachments of Stiffeners	Size of Openings	Height of Sills	Height of Casings
Poop Bulkhead ...	✓							
Raised Quarter Deck Bulkhead ...	✓							
Bridge, After Bulkhead ...	✓							
Bridge, Forward Bulkhead ...	✓							
Forecastle Bulkhead ...	✓							
Trunk, Aft ...	✓							
Trunk, Forward ...	✓							
Exposed Machinery Casings on Freeboard or Raised Quarter Deck ...	34	30	4x3x 5/16"	1'-10" - 2'-9"	3x52. 6x10	2P. 4'-10" x 10' 6" and 2' 0"	18"	7'-0" x 12'-0"
Exposed Machinery Casings on Superstructure Decks ...	✓							
Machinery Casings within Superstructures not fitted with Class I Closing Appliances ...	✓							
Deckhouses on Flush Deck Ships ...	✓							

Particulars of Closing Appliances (state if capable of being manipulated from both sides).

Poop Bulkhead ...	✓
Raised Quarter Deck Bulkhead ...	✓
Bridge, After Bulkhead ...	✓
Bridge, Forward Bulkhead ...	✓
Forecastle Bulkhead ...	✓
Exposed Machinery Casings on Freeboard or Raised Quarter Deck ...	Hinged steel doors operated both sides ✓
Exposed Machinery Casings on Superstructure Decks ...	✓
Machinery Casings within Superstructures not fitted with Class I Closing Appliances ...	✓
Deckhouses on Flush Deck Ships ...	✓

PARTICULARS

The following diagrams should be used to indicate the positions of cargo and coaling hatchways, gangway, cargo and coaling ports, ventilators, companionways, etc., which would affect the seaworthiness of the ship:—



Particulars of fiddle, funnel and ventilator coamings, engine room skylight and other openings in machinery casing tops and their means of closing :—

Fiddle openings closed by strong steel storm covers. Funnel, Vent coamings and Engine Room skylights of steel and strongly constructed. ✓

Particulars of Flush Bunker Scuttles:—

In each side on foreboard deck to coal bunkers - cast iron - bayonet joint with chain attachment 2" dia. ✓

Particulars of Companionways :—

ars of Companionways:—
To forward accom^o steel house, strongly constructed - with door 5'8" x 2'4",
sill 1'8" - operated both sides. ✓

Particulars of Ventilators in exposed positions on freeboard and superstructure decks

Particulars of Ventilators in exposed positions on freeboard and superstructure decks:

1-18"	dia	P.S.	to	held fwd. end.	54"	high	x .36"	"	coaming - supported.
1-9"	"	P	"	Crew accomms	36"	"	x .32"	"	"
1-15"	"	S.	"	held aft end	36"	"	x .36"	"	✓

1 ft. x 6 ft. life sides P & S. under bulwarks

A number of Vents fitted at ship's sides P. & S. under bulwarks, strongly constructed thus:-

all Vent Coamings, closed, wood planks & Canvas covers. ✓

Particulars of Air Pipes in exposed positions on freeboard, raised quarter, or superstructure decks :—

To F. p. tank - 3" air pipe 36" high. ✓

" F.W. " - 3 1/2" air filling pipe 36" high.

"Ballast" - Engine Room - 3" air filling pipe & 2 1/2" vent pipe P.S. 36" long.

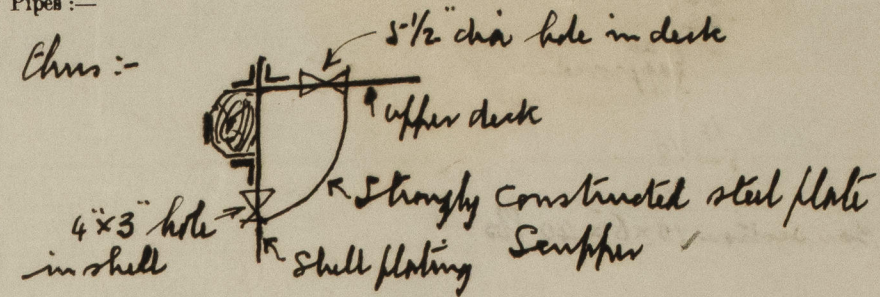
"A. pk" - 3" air pipe - 36" high.

all air pipes closed - Wood plugs & canvas cover.

Particulars of Gangway ^{Docks} ~~Cargo~~ and Cooling Ports:— at fore and after ends in way of bulwarks, strongly constructed. (See also sketch).

Particulars of Scuppers and Sanitary Discharge Pipes :—

Six Semphens prs. sides Chms:-



all Sanitary pipes discharge overboard from upper deck through strong brass storm valves

Particulars of Side Scuttles :—

Sidelights fitted below foreboard deck strongly constructed and fitted with strong hinged deadlights. ✓

Vertical distance of Sill of lowest Side Scuttle above top of keel.

12410" ✓

Particulars of Guard Rails :—

home

Particulars of Gangways, Lifelines, etc.:—


Particulars of Gangways, Lifelines, etc.:— Provision made for rigging lifelines in all parts of the ship which might have to be used by the crew in the regular working ship.

Particulars of Freeing Arrangements.						
	Length of Bulwark	Height of Bulwark	Size of Freeing Ports	Number each side	Area each side	Rule area each side
After Well	176 179'0"	369"	360" x 1'1 1/2"	11	388	24.6 sq ft per 72"
Forward Well	-	-	-	-	-	-

State position of each freeing port { After Well:— as approved
(F. and A. position and height above deck edge) { Forward Well:— 7"

State whether the freeing ports are fitted with shutters, bars, or rails, and give particulars of such:— Hinged flaps and one horizontal rod, hinges fitted with brass pins. ✓

Additional area where sheer is less than standard.



© 2020
Lloyd's Register
Foundation

PARTICULARS PROTECTION TO OPENINGS, ETC.

HATCHWAYS ON FREEBOARD AND SUPERSTRUCTURE DECKS.									
Description of Hatchway		No. 1		Hatch to F.P. Store					
Dimensions of Hatchway		25'-8" x 12'-0"		2'-3" x 1'-6"					
COAMINGS	Height above Deck	3'-0"		6"					
	Thickness	44"		-					
	Stiffeners	-		-					
	Brackets, Stays	-		-					
HATCH BEAMS	Number	4							
	Spacing	5'-1 3/8"							
	Scantling and Sketch	H Bar Section 10 x 6 x 40 lbs.							
	Bearing Surface	3"							
FORE AND AFTERS	Number								
	Spacing								
	Unsupported Lengths								
	Scantling* and Sketch								
HATCH COVERS	Material	W.W.		Steel W.T.					
	Thickness	2 1/2"		16 gage					
	How fitted	F.A.		3/8"					
	Bearing Surface	3"							
Spacing of Cleats		21"							
Number of Tarpaulins		2							
<p>*Are wood fore and afters steel shod at all bearing surfaces? <i>yes</i></p> <p>Are battens and wedges efficient and in good condition? <i>yes</i></p> <p>Are tarpaulins in good condition and in accordance with rule requirements? <i>yes</i></p> <p>Are lashings provided in accordance with rule requirements? <i>yes</i></p>									

Particulars of any special features:—

Displacement at 9'-0" draught 1114 tons. T.P.I. 13.70.
 " " 10'-0" " 1283- " 14.44.
 Depth moulded to step forward & aft end 12'-9".
 85% " " " " " " 10'-10".
 moulded displacement @ 10'-10" moulded draught 1436 tons
 " Coefficient .644.

Endorsement at first survey and at surveys for renewal of Certificate:—

The fittings and appliances are in accordance with the particulars shown on this form (or as now modified) and are in good condition.

