

21-11-18

DESIGNED BY LLOYD'S  
VICTORIA SHIPYARD,  
LONDON.  
Drawing No. 1931  
Made by J.D. Checked by  
Date 4th November 1918.

SHIPS No. 250  
MIDSHIP SECTION  
STANDARD VESSELS  
C.5. TYPE  
CLASS 100 A1\* LLOYDS

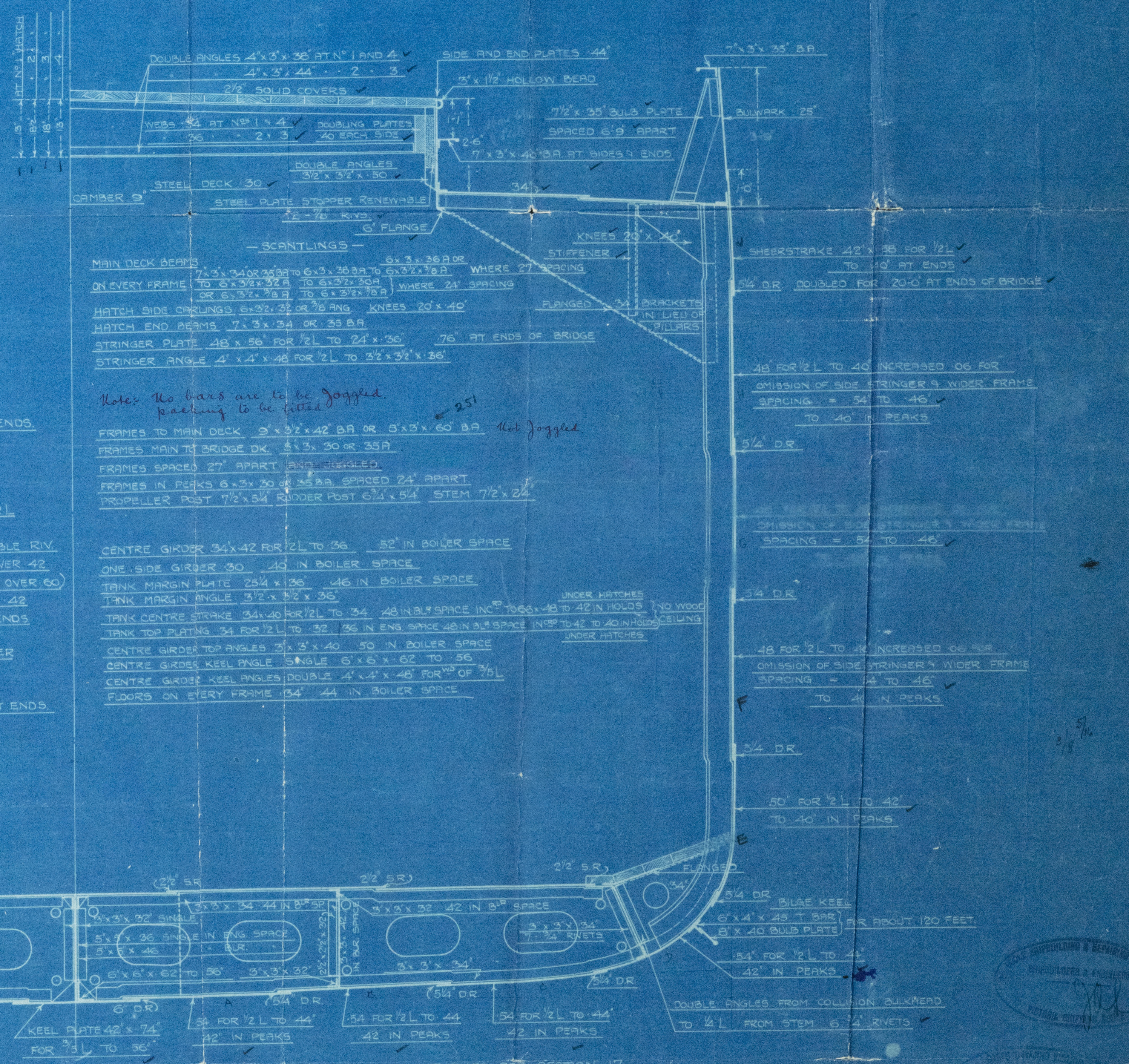
| EQUIPMENT LETTER "P" |                  |                   |   |
|----------------------|------------------|-------------------|---|
| 2 POWER ANCHORS      | 30 1/2 ONTS EACH | STOCKLESS         | ✓ |
| 1 STREAM             | 7 1/4            | EX STOCK          | ✓ |
| 1 KEDGE              | 4 1/2            |                   | ✓ |
| 240 FATHOMS          | 1 10/16          | STUD CHAIN CABLE  | ✓ |
| 75                   | 3 3/4            | STREAM STEEL WIRE | ✓ |
| 30                   | 3 1/4            | TOWLINE           | ✓ |
| 2 @ 30               | 2 1/4            | HAWSER            | ✓ |
| 2 @ 30               | 2                | WARP              | ✓ |

BY WAR EMERGENCY MEASURE  
210 FATHOMS 1 10/16 STUD CHAIN CABLE  
KEDGE ANCHOR TO BE DISPENSED WITH

FORECASTLE  
FORECASTLE DECK BEAMS (ON EVERY FRAME)  
5 1/2 x 3 x 32 BA TO 5 1/2 x 3 x 32 BA TO 4 1/2 x 3 x 30 BA  
OR 6 1/2 x 3 x 35 BA TO 6 1/2 x 3 x 35 BA TO 5 1/2 x 3 x 35 BA  
KNEES 14 x 3 1/2" SIDE PLATING 32" STRINGER ANGLE 3 x 3 x 30  
DECK COMPLETELY PLATED OVER 30"

DIMENSIONS  
LENGTH O.P. 240' 0"  
BREADTH M.D. 36' 0"  
DEPTH M.D. 21' 3"  
SCALE 1/2" = 1 FOOT

| LLOYDS' NUMERALS         |              | ERECTOR'S                   |        |
|--------------------------|--------------|-----------------------------|--------|
| B = 36.00                |              | BRIDGE 51.75 x 7.00 x 75    | 271.69 |
| D = 21.25                | 1st N°       | FORECASTLE 23.0 x 7.00 x 75 | 120.75 |
| L = 240.00               | 2nd N°       | CASING ETC 25.5 x 7.00 x 30 | 124.25 |
| ADD FOR ERECTIONS 516.69 |              |                             | 516.69 |
| 14256.69                 | EQUIPMENT N° | d 18.42                     |        |
|                          |              | L/D 1.29                    |        |



— RIVETING —  
KEEL PLATE: QUAD RIV. OVERLAPS FOR 1/2 L TO TREBLE AT ENDS.  
MAIN DECK SHEERSTRAKE TREBLE RIV. OVERLAPS FOR 1/2 L  
DOUBLE AT ENDS TREBLE WHERE OVER 42"  
STRAKE BELOW TREBLE RIV. OVERLAPS FOR 1/2 L  
DOUBLE AT ENDS TREBLE WHERE OVER 42"  
KEEL TO UPPER TURN OF BILGE TREBLE RIV. OVERLAPS FOR 1/2 L  
DOUBLE AT ENDS TREBLE WHERE OVER 42"  
UPPER TURN OF BILGE TO STRAKE BELOW SHEERSTRAKE TREBLE RIV.  
OVERLAPS FOR 1/2 L TO DOUBLE AT ENDS TREBLE WHERE OVER 42"  
MAIN DECK STRINGER PLATE TREBLE RIV. OVERLAPS (QUAD WHERE OVER 60")  
FOR 1/2 L TO DOUBLE AT ENDS TREBLE WHERE OVER 42"  
DECK PLATING DOUBLE RIV. OVERLAPS FOR 1/2 L TO SINGLE AT ENDS  
CENTRE GIRDER TREBLE RIV. OVERLAPS FOR 1/2 L  
DOUBLE AT ENDS TREBLE WHERE 36" AND OVER  
MARGIN PLATE DOUBLE RIV. OVERLAPS  
CENTRE TANK TOP  
TANK TOP PLATING FOR 1/2 L TO SINGLE AT ENDS

Notes: No bars are to be dogged.  
packing to be fitted.  
FRAMES MAIN TO BRIDGE DECK 5 1/2 x 30 OR 35 BA  
FRAMES SPACED 27" APART AND DOGGLED  
FRAMES IN PEAKS 6 1/2 x 30 OR 35 BA SPACED 24" APART  
PROPELLER POST 7 1/2 x 54 RODDER POST 6 1/4 x 54 STEM 7 1/2 x 24

CENTRE GIRDER 34 x 42 FOR 1/2 L TO 36" 52" IN BOILER SPACE  
ONE SIDE GIRDER 30" 40" IN BOILER SPACE  
TANK MARGIN PLATE 25 1/4 x 36 46" IN BOILER SPACE  
TANK MARGIN ANGLE 3 1/2 x 5 1/2 x 36"  
TANK CENTRE STRAKE 34 x 40 FOR 1/2 L TO 34" 48" IN BULB SPACE INC TO 66 x 48 TO 42" IN HOLDS 7 NO WOOD  
TANK TOP PLATING 34 FOR 1/2 L TO 32" 36" IN ENG. SPACE 48" IN BULB SPACE INC TO 42" TO 40" IN HOLDS  
CENTRE GIRDER TOP ANGLE 3 x 3 x 40 50" IN BOILER SPACE  
CENTRE GIRDER KEEL ANGLE SINGLE 6 x 6 x 62 TO 56"  
CENTRE GIRDER KEEL ANGLE DOUBLE 4 x 4 x 48 FOR 1/2 L OF 36"  
FLOORS ON EVERY FRAME 34" 44" IN BOILER SPACE

DOGGLED & REPAIRING  
INSPECTION & ENGINEERING  
VICTORIA SHIPYARD



s/s *Eston*  
Hull Rpt No. 31467  
31527  
MIDSHIP SECTION.

Google No 250

C.5. Standard Vessel.

s/s *Redcar*  
Hull Rpt - 31731  
251 *Redcar* 31787

NN Katrina  
Anna



© 2021

Lloyd's Register  
Foundation

007528-007536-0147