

S.S. No 613

23. 4. 19 245'-0" B.P. x 34'-0" x 16'-6" MLD. TO MAIN DK.

MIDSHIP SECTION

SCALE 1/2" = 1 FT

VESSEL TO CLASS LLOYD'S 100 A1*

CLASSIFICATION DIMENSIONS & PROPORTIONS.

LENGTH BET. PERP (LLOYD'S) = 245'-3"

BREADTH MLD. = 34'-0"

DEPTH MLD. TO MAIN DK. = 16'-6"

B + D = 50.5 1ST NUMBER.

5 (B + D) = 252.5 2ND NUMBER.

1/2 TO MAIN DK. = 245.25 / 16.5 = 14.85.

1/2 TO BRIDGE DK. = 245.25 / 24 = 10.21.

SCANTLINGS.

FRAMES SPACED 23" APART. FORE & AFT.

FRAMING

FRAMES 3 1/2" x 3" x 30"; REVERSE FRAMES 3" x 2 1/2" x 30" ALL TO

MAIN DECK FOR 1/2 L. AMIDSHIPS, ALTERNATELY TO MAIN AND LOWER DECKS AT ENDS.

IN ENGINE & BOILER SPACE FRAMES 4" x 3" x 34"; REVERSE FRAMES

4 1/2" x 3" x 34" TO MAIN DECK DOUBLE END.

ALL FRAMES TO BE CARRIED UP TO HEIGHT OF BRIDGE EXCEPT IN WAY OF GANGWAY DOORS.

FLOORS.

FLOORS 19" x 40" FOR 3/5 LENGTH & 19" x 36" AT ENDS. 44"

IN ENGINE SPACE AND 50" IN BOILER SPACE.

BULKHEADS

BULKHEADS 1/26 AT UPPER DECK (SEE PROFILE) BOUNDARY ANGLES 3" x 3" x 42"

STIFFENERS (SEE PROFILE) SPACED 30" x 24" AT F.R.B.W.

TUNNEL

SIDE PLATING 40"; STIFFENERS 6" x 3" x 34" SPACED 46" APART.

TOP 36" WOODEN UNDER HATCHES 36" LOWER DECK FORMS TOP OF TUNNEL.

EQUIPMENT No

LONGITUDINAL NUMBER 12385.

POOP & BRIDGE 153.5 x 7.5 x 3 = 263

FORECASTLE 39 x 7.5 x 3 = 219

DECK HOUSE ON BRIDGE DECK 59.5 x 7.5 = 223

EQUIPMENT No 13690.

LETTER O

EQUIPMENT

2 BOWER ANCHORS 28 cwt. EACH, STOCKLESS 240 FATHS. 1 1/16" STUD CHAIN CABLE

1 " " 24 " " 75 " " 1" CHAIN OR 3 3/4" STEEL WIRE.

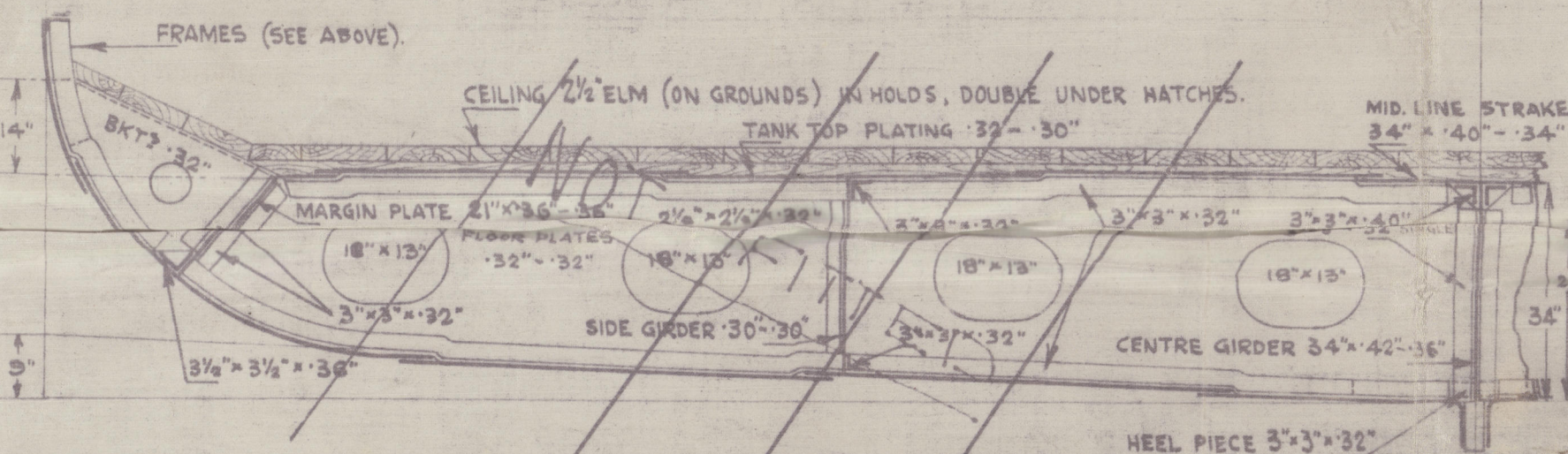
1 STREAM " 7 " EX STOCK 90 " " 10 " " 2 1/2" S.W.

1 KEDGE " 4 " " 90 " EACH OF 6" & 5" HANSER.

RIVETING

TO RULE

SEE PROFILE & STEEL DECKS FOR PILLARS & GIRDERS, BULKHEADS & STIFFENERS, & CARGO HATCHES.



SECTION IN WAY OF CELLULAR DOUBLE BOTTOM

EXTENDING FROM BH# 80 - BH# 117.

FLOORS FITTED AT EVERY FRAME.

KEEL BAR 7" x 2 1/2"
STEM 7" x 2 1/2"
RUDDER POST 6 1/2" x 5"
PROPELLER POST 7 1/4" x 5"

WILLIAM BEARDMORE & CO., LTD.,
DESIGNING DEPT.
NUMBER 3362.
DATE 22/3/19.
EXAMINED BY
NAVAL CONSTRUCTION WORKS,
DALMUIR, N.B.

ALL HALF BEAMS AND BEAMS AT ENDS REDUCED TO RULE

POOP DE
BEAMS 5 1/2" x 3 1/2" x 40" A. KNEES 13" x 30"
STRINGERS 22" x 28" ANGLE 3" x 3" x 28"
TIES 9" x 28"
PILLARS 2 CHANNELS, (SEE PROFILE)
WOOD DECK 5" x 2 1/2" P.P.

FORECASTLE DE
BEAMS 6" x 4" x 30" 7" x 3" x 44" B.A. KNEES 7" x 34"
STRINGERS 22" x 30" ANGLE 3" x 3" x 30"
TIES 7" x 30"
PILLARS 2 1/2" DIAR SPACED 46" (2 ROWS)
WOOD DECK 5" x 2 1/2" PITCH PINE.

BRIDGE DECK PLATED 30
WOOD DECK 5" x 2 1/2" P.P.
STRINGER PLATE 52" x 46"
ANGLE 4" x 4" x 48"

CAMBER 8 1/2" ON 34'-0"
BEAMS ON EVERY ALTERNATE FRAME
BEAMS TO BRIDGE DECK
2 ROWS OF PILLARS
PILLARS 4" x 4" x 48"
SPACED 46"

STEEL DECK 30 F.A.
WOOD DECK 5" x 3" P.P.
STEEL DECK INCREASED 10" IN WAY
OF E & B CASINGS & HATCHES
STRINGER PLATES 45" x 42"
ANGLES 3" x 3" x 36"
CLEAR OF BRIDGE
STRINGER PLATES 45" x 75"
AT ENDS 23" x 36"
ANGLES 3" x 3" x 36" & 5" x 5" x 60"

CAMBER 8 1/2" ON 34'-0"
BEAMS ON EVERY ALTERNATE FRAME
BEAMS IN WAY OF BRIDGE
2 ROWS OF PILLARS
BEAMS CLEAR OF BRIDGE
2 ROWS OF PILLARS
BEAMS BULB TEE 6" x 4 1/2" x 30"
ANGLE 7" x 3" x 44"
KNEES 17" x 34"
BEAMS BULB TEE 6" x 4 1/2" x 40"
ANGLE 6 1/2" x 3" x 40"
KNEES 19" x 40"

DECK TIE PLATES 15" x 36"
WOOD DECK 5" x 3"
STEEL PLATING OVER
TUNNEL
SPARRING 6" x 1 1/2" W.P.
SPACED 8"
STRINGER PLATE 42" x 36" to 22" x 36"
ANGLES 3" x 3" x 36" F.A.
SPACE BETWEEN FRAMES TO BE FILLED IN WITH
WOOD AND PORTLAND CEMENT

CAMBER 8 1/2" ON 34'-0"
BEAMS ON EVERY ALTERNATE FRAME
BEAMS TO LOWER DECK
2 ROWS OF PILLARS
BEAMS BULB TEE 7" x 5" x 40"
ANGLE 8 1/2" x 3" x 50"
KNEES 21" x 44"

CENTRE KEELSON
RIDER PLATE 11" x 50" x 54"
DOUBLE CHANNELS 8" x 3 1/2" x 3 1/2" x 44"
INTERCOSTAL PLATE 40" to 36"
SINGLE VERTICAL ANGLE 3" x 3" x 40"
KEELSONS
DOUBLE ANGLE 5" x 3 1/2" x 36" to 34"
SINGLE B.A. J 8" x 3 1/2" x 50" to 40"
INTERCOSTAL PLATES 36"
SHELL ANGLES 3" x 3" x 36"

CEILING & SPARRING
2 1/2" ELM IN HOLDS DOUBLE UNDER HATCHES
2 1/2" PITCH PINE IN BUNKERS
6" x 1 1/2" WHITE PINE
FLOORS 19" x 40" to 36" (SEE PROFILE)
HEEL PIECE 3" x 3" x 32"
HEEL FOR
CARBOARD 48" x 52"
FOR 1/2 L. to 46"

50" to 42" BOTTOM PLATING
BOTTOM PLATING FORWARD TO RULE
FRAMES FOR 2 OF 3/5 L.
MIDSHIP BREADTH OF SHELL PLATES ABOUT 62" TO 58" CLEAR OF BRIDGE
BOSS PLATES 50"

MAX. BREADTH FOR RULE RIVETING 54" (ADDITIONAL RIVETING AS PER RULE)
Butts of bottom shell plating of 3 strakes adjacent to carboard when over rule breadth
to be quadruple riveted.

3" x 1 1/2" HALF-ROUND IRON
SHEERSTRAKE 45" x 52"
IN WAY OF BRIDGE

SIDE PLATING OF POOP 30
FOC'SLE 30
48" IN BRIDGE

THIS STRAKE 63" x 46" IN BRIDGE, DOUBLED AT ENDS OF BRIDGE
AND IN WAY OF GANGWAY DOORS (SEE PROFILE) TO 40" AT ENDS.
Sheerstrake butts quadruple riveted strake for 1/2 L.
doubling both keels riveted " " "

BELTING FOR ART. 205
18" x 12" AMERICAN ELM.
ANGLES 5" x 4" x 3 1/4"
FACE BAR 6" x 1 1/4" IN 40'-0" LENGTHS.
(10'-54")

THIS STRAKE INCREASED AT BREAKS
AND REDUCED AT ENDS TO 40."

BRACKET PLATE
BEAM KNEE
TO BULB ANGLE BEAM.

BILGE KEEL FOR 1/2 L. to
BULB PLATE 3" x 40"
TEE BAR 5" x 4" x 40"

SIDE KEELSONS IN BOILER ROOM.
RIDER PLATE 11" x 50" SCARPHED TWO
FRAME SPACES EACH END PAST ORD. KEELSON

INT. 36" x 36" x 36"
5" x 3 1/2" x 36"

22. 4. 19.

Amended Third Edition

Revised Nov 80-45

No. 813

S/s Setter

GLASGOW REPORT No. 39941

NW Ulster Castle

© 2020

683

W. M. & A. Westminister

Lloyd's Register
Foundation

007865-007873-0017