

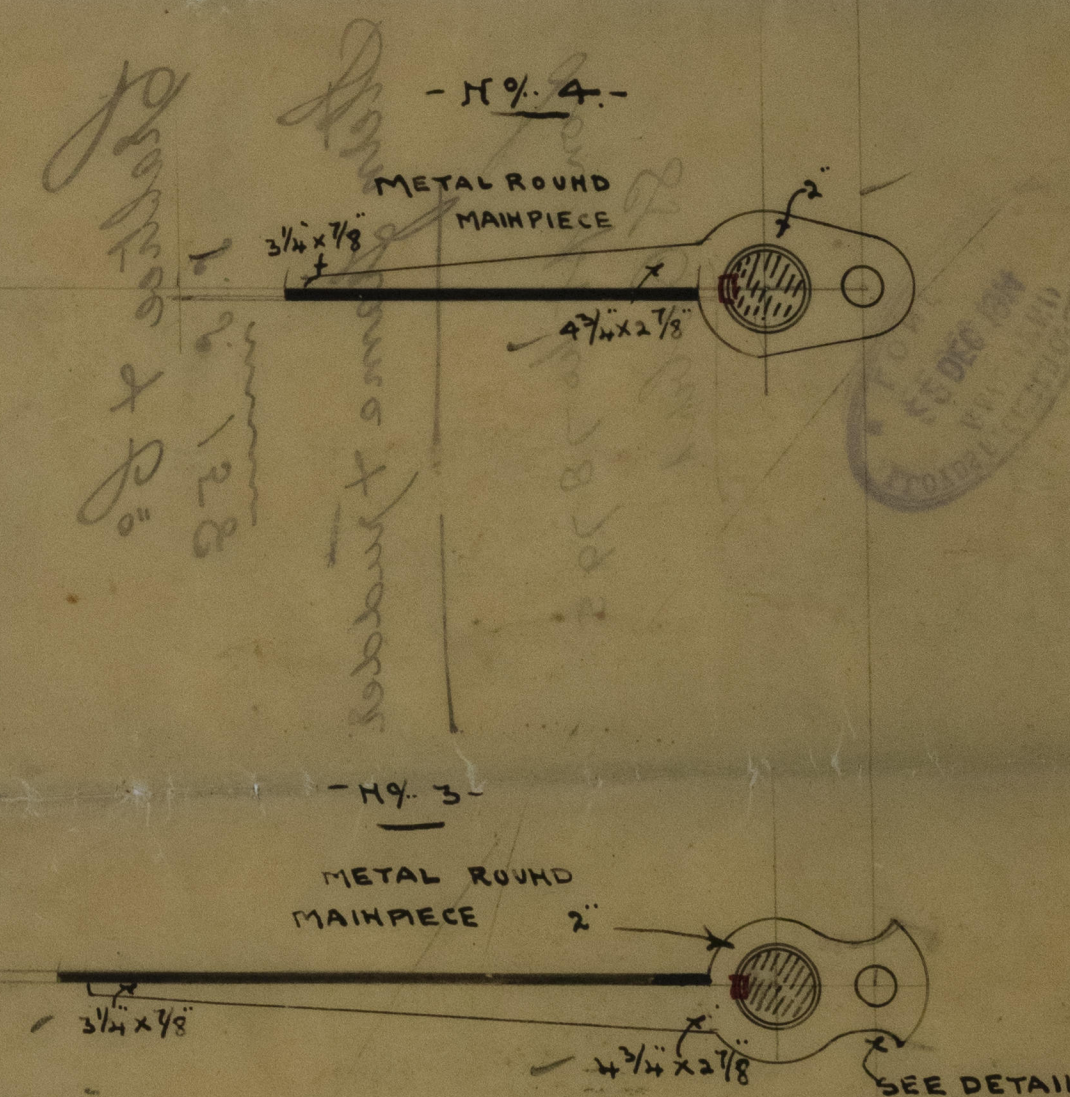
RUDDER & STERNFRAME.

SCALE 1" = 1 FOOT. — DETAILS 3" = 1 FOOT.

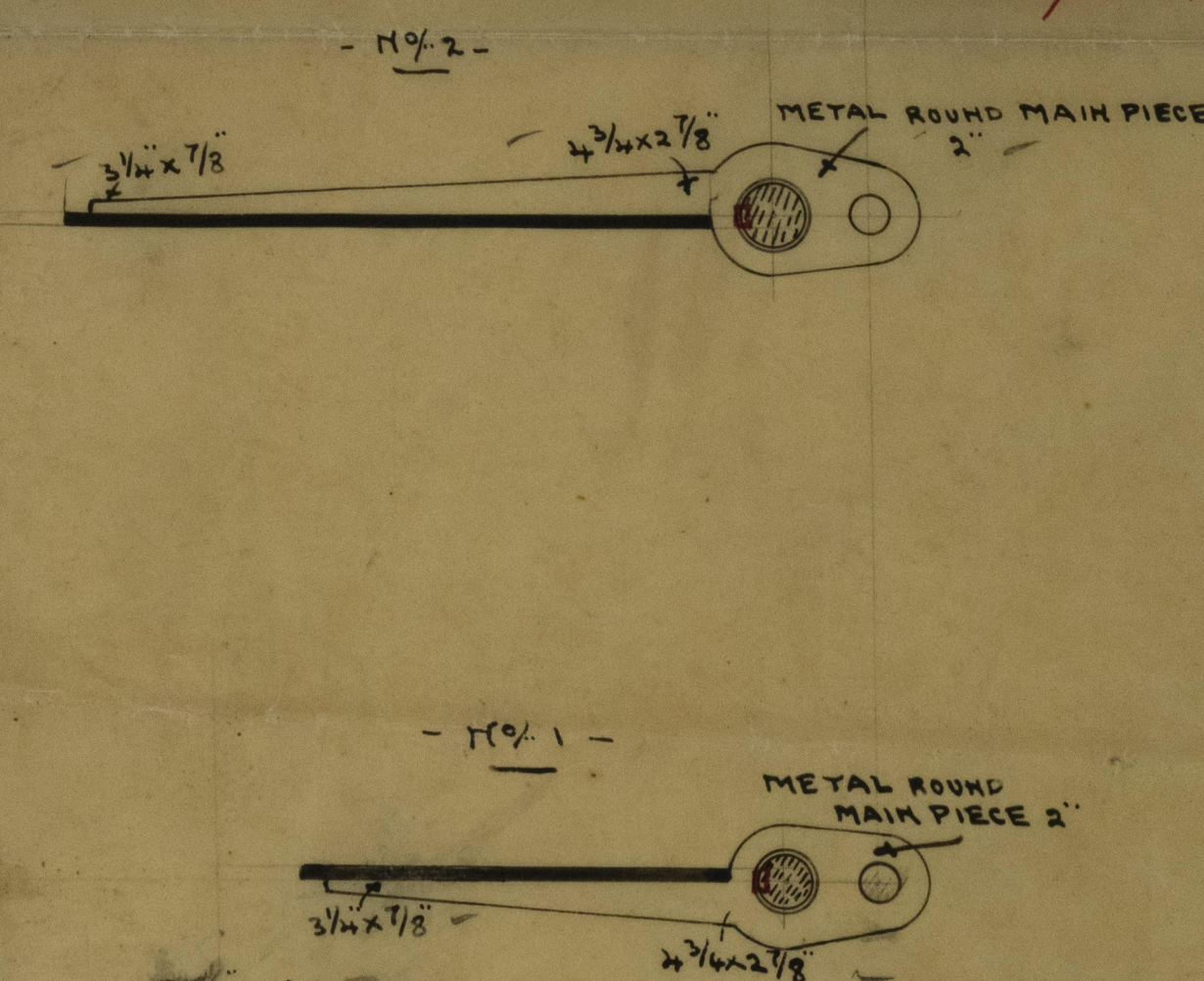
FORGED IRON TO LLOYDS TESTS & REQUIREMENTS.

STERNFRAME 5 $\frac{3}{4}$ " X 3" RUDDER HEAD AS PER RULE 4 $\frac{3}{4}$ " DIA.

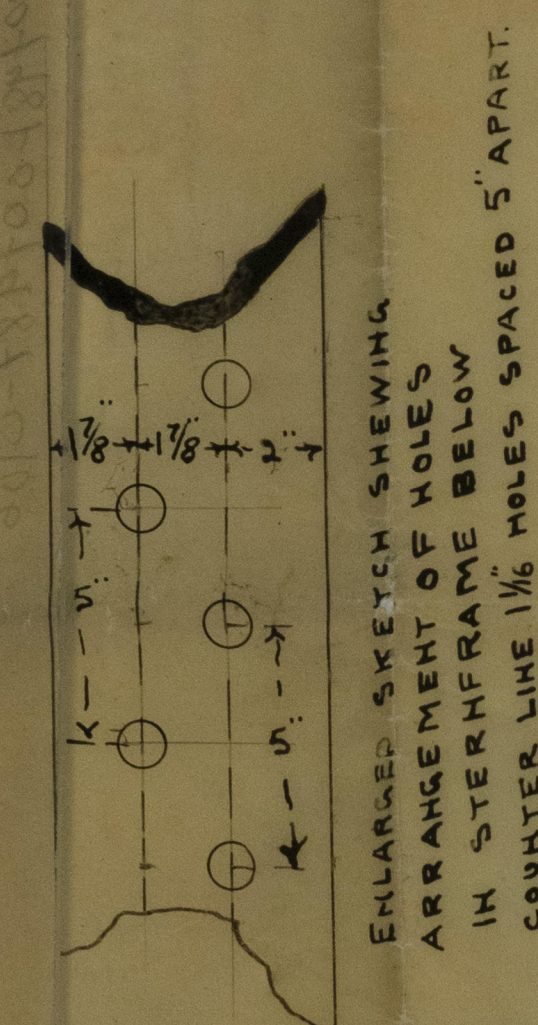
SPEED 10 KNOTS



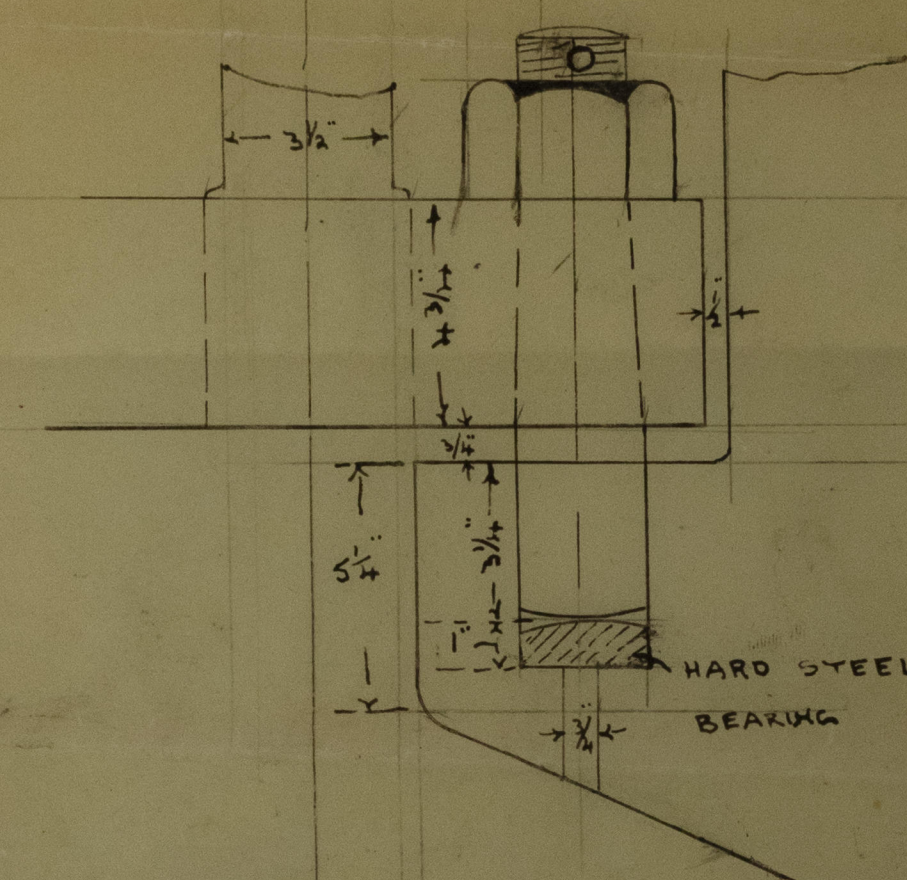
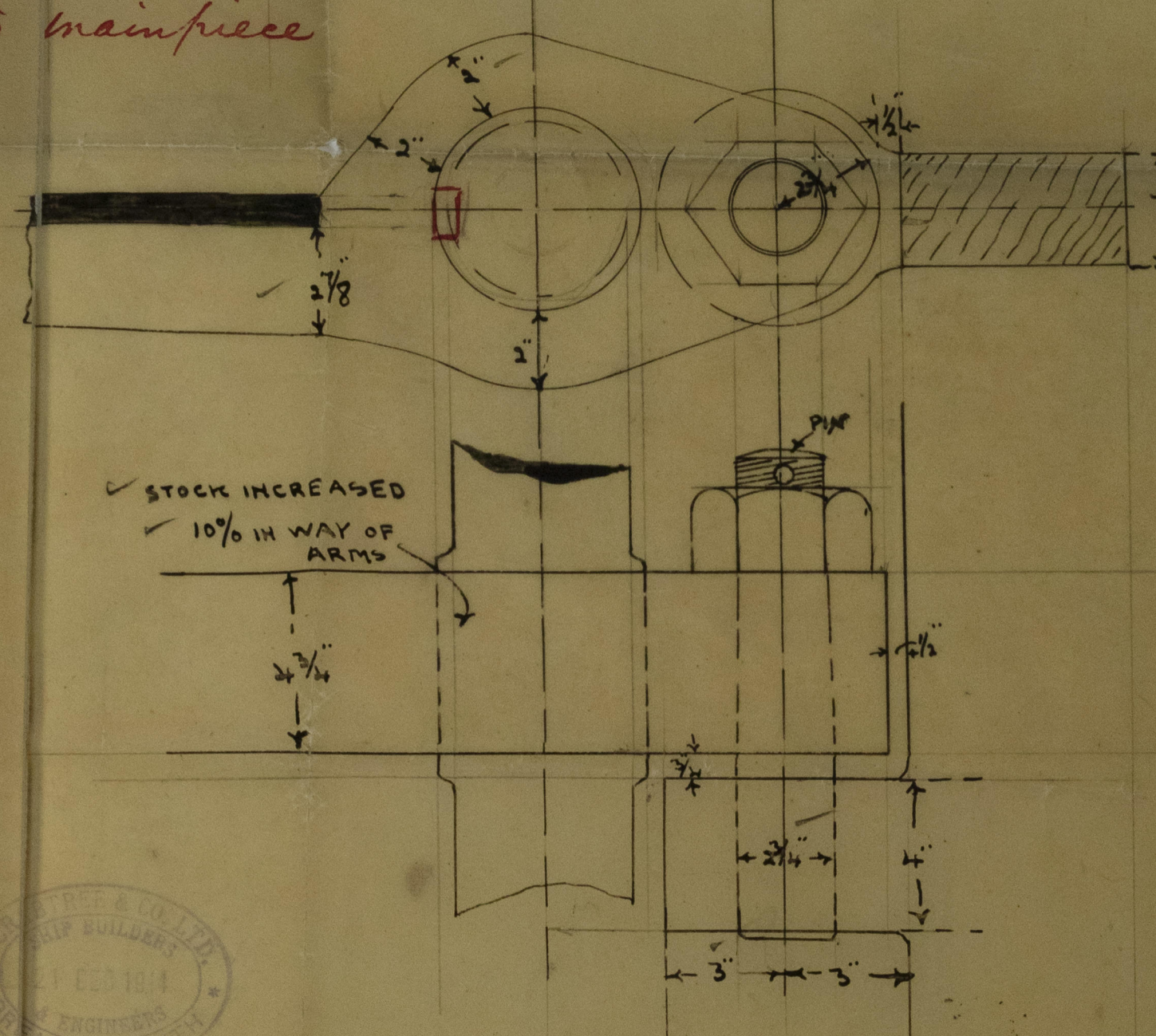
Arms keyed to mainpiece
as per Rule



22.12.14



PLAN OF GUDGEON & ARMS



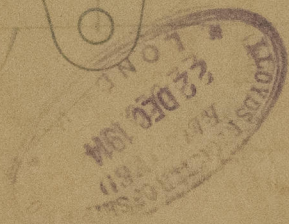
- BOTTOM GUDGEON & PINTLE. -

Crabtree & Co

S. S. 158

Stern frame & rudder

Don't do 78795
S. S. 158



007481007487-0106

© 2020

Lloyd's Register
Foundation