

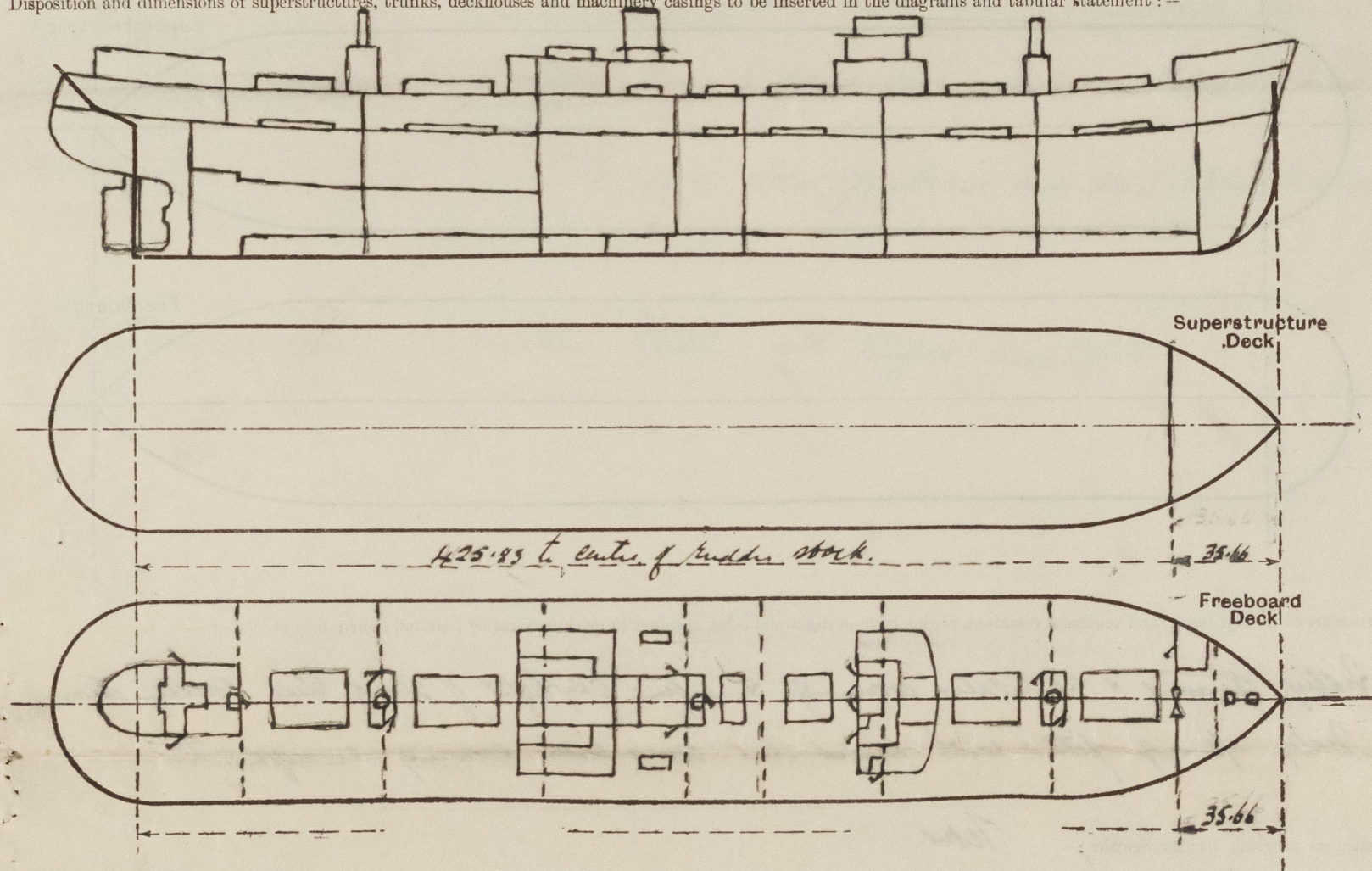
Lloyd's Register of Shipping.

SURVEYS FOR FREEBOARD.

(CONDITIONS OF ASSIGNMENT.)

Ship's Name *EMPIRE PERDITA* Port of Survey *NEWCASTLE-ON-TYNE*
 Official Number _____ Surveyor's Signature *A. Alhoi*
 Nationality and Port of Registry *British. South Shields.* Date of Survey *During construction.*

Disposition and dimensions of superstructures, trunks, deckhouses and machinery casings to be inserted in the diagrams and tabular statement:—



Particulars of Superstructures, Trunks, Casings, Deckhouses.

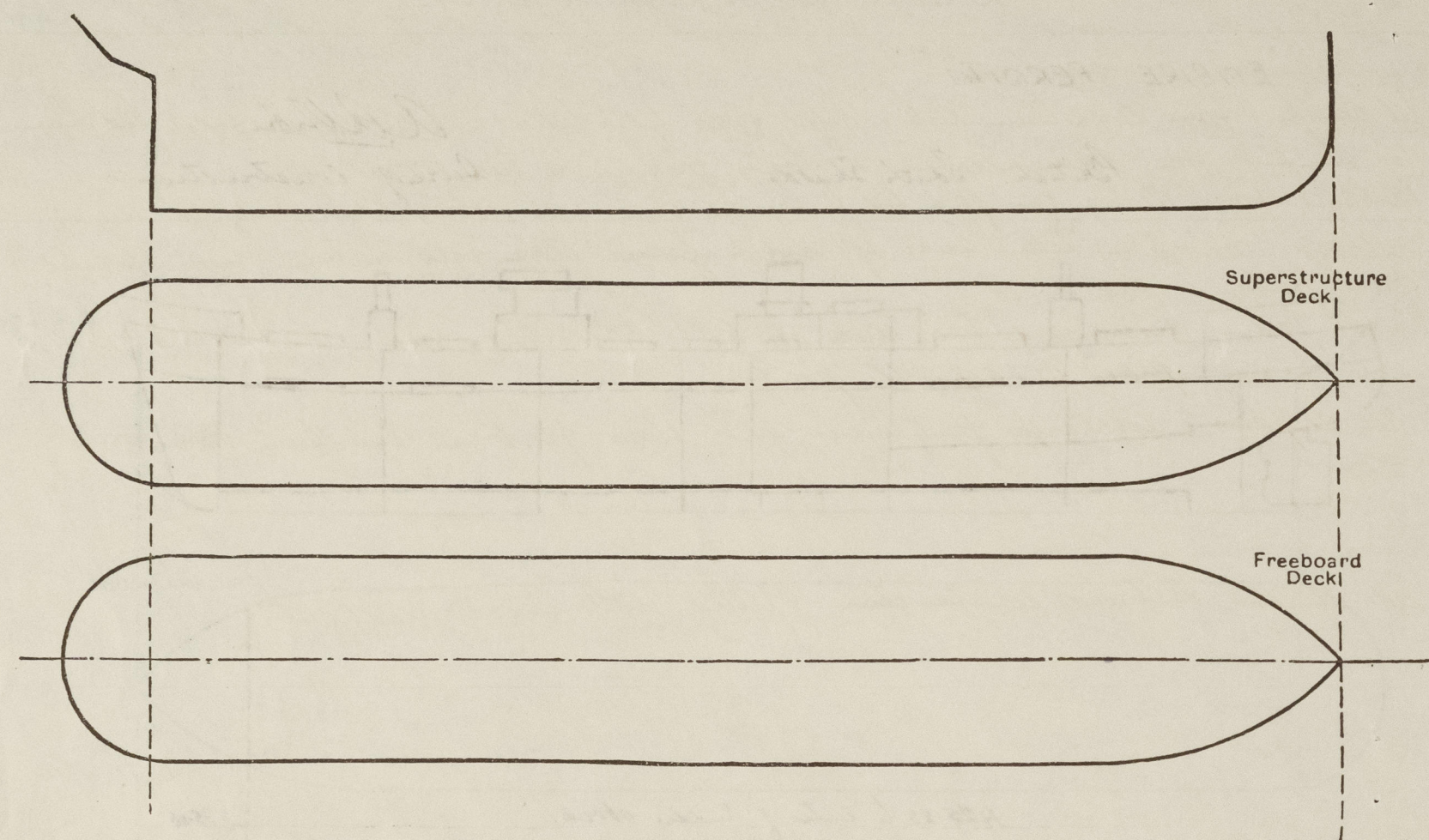
	Coaming	Plating	Stiffeners	Spacing	End Attachments of Stiffeners	Size of Openings	Height of Sills	Height of Casings
Poop Bulkhead ...	✓							
Raised Quarter Deck Bulkhead ...	✓							
Bridge, After Bulkhead ...	✓							
Bridge, Forward Bulkhead ...	✓							
Forecastle Bulkhead ...	30 ✓	30 ✓	14 x 3 x 32 L ✓	30 ✓	✓	10' 5" x 2' 3" ✓ 10' 5" x 4' 6" ✓	12" ✓	6' 9" ✓
Trunk, Aft ...	✓							
Trunk, Forward ...	✓							
Exposed Machinery Casings on Freeboard or Raised Quarter Deck ...	40 x 35 ✓	30 ✓	3 1/2 x 3 x 40 L ✓	31" ✓	✓	20' 5" x 2' 3" ✓	24 ✓	4' 6" ✓
Exposed Machinery Casings on Superstructure Decks ...	✓							
Machinery Casings within Superstructures not fitted with Class I Closing Appliances ...	✓							
Deckhouses on Flush Deck Ships ...	✓	25 ✓	3 x 3 x 35 ✓ 3 x 3 x 36 ✓	36" Sides ✓ 30" ends ✓	✓	20' 5" x 2' ✓ 10' 5" x 4' ✓	18" ✓ 24 ✓	4' 6" ✓

Particulars of Closing Appliances (state if capable of being manipulated from both sides).

Poop Bulkhead ...	✓
Raised Quarter Deck Bulkhead ...	✓
Bridge, After Bulkhead ...	✓
Bridge, Forward Bulkhead ...	✓
Forecastle Bulkhead ...	1 Hinged steel door operates both sides. 1 steel plate secured by hook bolts spaced 12" apart.
Exposed Machinery Casings on Freeboard or Raised Quarter Deck ...	Hinged steel door operated both sides.
Exposed Machinery Casings on Superstructure Decks ...	
Machinery Casings within Superstructures not fitted with Class I Closing Appliances ...	
Deckhouses on Flush Deck Ships ...	2 Hinged steel doors + 1 double hinged steel door with strongback. operate both sides.

PARTICULARS OF PROTECTION TO OPENINGS, ETC.

The following diagrams should be used to indicate the positions of cargo and coaling hatchways, gangway, cargo and coaling ports, ventilators, companionways, etc., which would affect the seaworthiness of the ship:—



Particulars of fiddle, funnel and ventilator coamings, engine room skylight and other openings in machinery casing tops and their means of closing:—

Fiddle, funnel & ventilator coamings & engine skylight of strong steel construction. ✓
Fiddle opening fitted with hinged steel cover with securing arrangement. ✓

Particulars of Flush Bunker Scuttles:—

None. ✓

Particulars of Companionways:—

One to fore-cabin, through steel deck house, with hinged steel door (PK) operated both sides. Lids 24". ✓
One to hold 17.0 in main house fore-cabin, one to hold 17.0 in starboard side of main ship deck house, one to hold 17.0 in fore end of boiler casing, and one escape in fore end of after deck house, all fitted with hinged steel lids. Doors secured by turnbuckles, operating both sides. Lids 24". ✓

Particulars of Ventilators in exposed positions on freeboard and superstructure decks:—

All ventilator coamings forward of 1st 3" in height, shaft 1st 33" in height, excepting two to No 2 Hold 10'6" in height which are efficiently stayed to Saloon House front. ✓

6" dia coaming	30 thick	On main house top
10 11 1/2"	32"	26" dia 27" x 30" ✓
12"	34"	— ✓
14 1/2 15"	36"	On House aft ✓
16"	40"	8" dia 16" x 25" ✓

Coamings constructed as per Rule & closed by wood plugs & canvas covers. ✓

Particulars of Air Pipes in exposed positions on freeboard, raised quarter, or superstructure decks:—

Air pipes 33" in height to mouth. ✓

Air pipes closed by wood plugs & canvas covers. ✓

Particulars of Gangway Cargo and Coaling Ports:—

None. ✓

Particulars of Scuppers and Sanitary Discharge Pipes:—

All scuppers from cargo tween decks & refect, space led to bulges with self closing cocks in Eng. Room. ✓
No scuppers from accommodation in lower quarters in tween decks aft. ✓
Scuppers from clearing sea flat led to cruiser stem with rotary hand pump for clearing. ✓
Discharge from L.T. in tween decks aft. led to ground storm valve in tween decks operated from foreboard deck. ✓
Wash basin discharge in tween decks aft. led to portable storm valve, one below 2nd deck & one in wash place in accessible position. ✓
All scuppers & discharges from houses on or above foreboard deck led to storm valves in T.D. ✓

Particulars of Side Scuttles:—

Side Scuttles of strong construction & fitted with hinged deadlights. ✓

Vertical distance of Sill of lowest Side Scuttle above top of keel

34'-6" ✓

Particulars of Guard Rails:—

Open rails 3'6" high, 3 rods in height, obstructions about 5'0" apart. ✓
Steel bulwark in way of main ship deck houses. ✓

Particulars of Gangways, Lifelines, etc.:—

22" 7.5 line rope fitted forward & aft of main ship deck houses. ✓
Hand rail fitted to deck houses. ✓

Particulars of Freeing Arrangements.

	Length of Bulwark	Height of Bulwark	Size of Freeing Ports	Number each side	Area each side	Rule area each side
After Well						
Forward Well						
State position of each freeing port { After Well:— (F. and A. position and height above deck edge) { Forward Well:—						
State whether the freeing ports are fitted with shutters, bars, or rails, and give particulars of such:—						
Additional area where sheer is less than standard.						

PARTICULARS OF PROTECTION TO OPENINGS, ETC.

HATCHWAYS ON FREEBOARD AND SUPERSTRUCTURE DECKS.										
Description of Hatchway		No 1	No 2, 3, 5, 6	No 4	Lashing Hatch (P.S.)	For Deck.	Chain Hatch.	Wid. in Mid. Hous.	Cross cleats.	Cross Shut.
Dimensions of Hatchway		3'6" x 20'	3'0" x 20'	12'11" x 20'	15' x 5'	4' x 3'	2'6" x 2'	3' x 2'6"	24" dia	5'2" x 20'
COAMINGS	Height above Deck	30"	30"	30"	30	9" dia	9" dia	3"	9"	9
	Thickness { Sides	48	45	46	44	40	40	40	40	40
	Thickness { Ends	44	44	44	44	40	40	40	40	40
	Stiffeners	7 x 3 x .40	8 x 3 x .44	7 x 3 x .40	7 x 3 x .40					
Brackets, Stays		3	3	1	4					
HATCH BEAMS	Number	5	5	1						
	Spacing	6'3"	6'2"	6'5 1/2"						
	Scantling and Sketch	18 x 36	16 3/4 x 36	14 1/2 x 36						
	Bearing Surface	5 x 3 x 38	5 x 3 x 36	5 x 3 x 36						
FORE AND AFTERS	Number									
	Spacing									
	Unsupported Lengths									
	Scantling* and Sketch									
Bearing Surface										
HATCH COVERS	Material	O.P.	O.P.	O.P.	O.P.	O.P.	O.P.	Locking	Knifed	O.P.
	Thickness	2 1/2	2 1/2	3	2 1/2	2 1/2	2 1/2	2 1/2	2 1/2	2 1/2
	How fitted	7/10	7/10	7/10	7/10	7/10	7/10	7/10	7/10	7/10
	Bearing Surface	2 1/2	2 1/2	2 1/2	2 1/2	2 1/2	2 1/2	3	W.Y.	3
Spacing of Cleats		24	24	24	24	18	18		Correct.	24
Number of Tarpaulins		2	2	2	2	1	1			2.
<p>*Are wood fore and afters steel shod at all bearing surfaces? <i>Yes</i></p> <p>Are battens and wedges efficient and in good condition? <i>Yes</i></p> <p>Are tarpaulins in good condition and in accordance with rule requirements? <i>Yes</i></p> <p>Are lashings provided in accordance with rule requirements? <i>Yes. Locking bars fitted to No. 1. Hatchway.</i></p>										

Particulars of any special features:—

This vessel is built of scantlings as approved for an extreme draught of 26' 9"

DEEPER LOADING. Owners desire the deeper loading as permitted under Ministry of War Transport Memo 117. 151964/41.

I. Efficient locking bars are fitted to the No. 1. Hatchway.

II. The timber deck divisional bulkheads are intact excepting No 84 which is fitted with Knifed steel W.Y. Bars (P.S.).

Endorsement at first survey and at surveys for renewal of Certificate:—

The fittings and appliances are in accordance with the particulars shown on this form (or as now modified) and are in good condition.



© 2021

Lloyd's Register
Foundation