

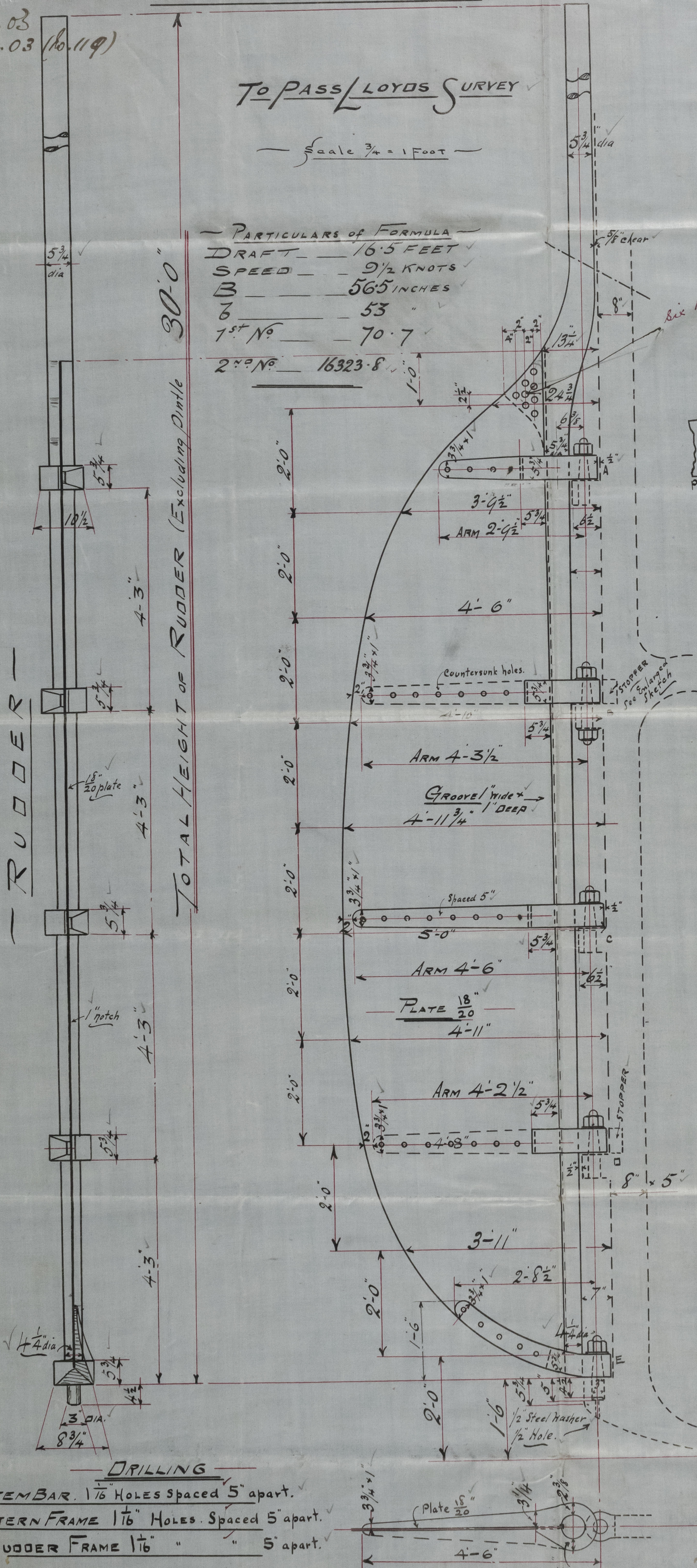
**PROPOSED**  
**SINGLE-PLATE-RUDDER**  
*also No. 119 (appd. 24/12/03)*  
**No. 118 SHIP.**

7.12.03  
 24.12.03 (No. 119)

**TO PASS LOYDS SURVEY**

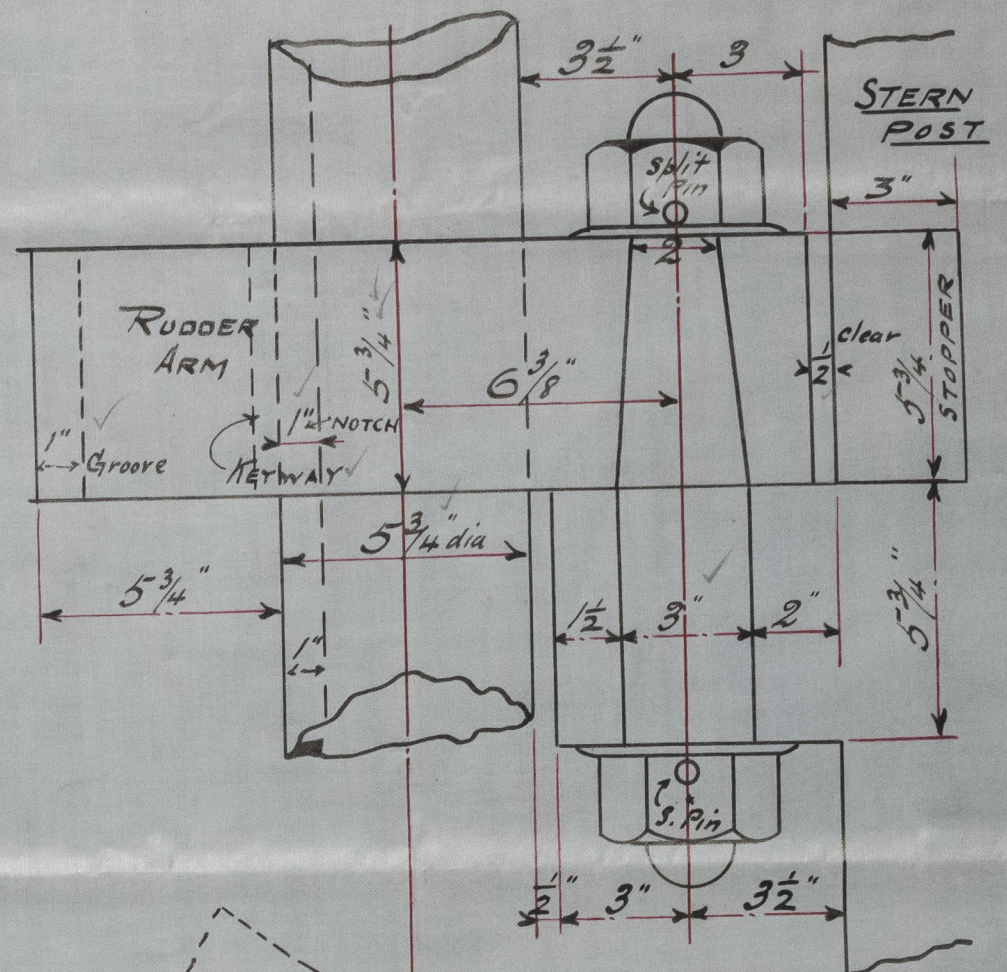
Scale  $\frac{3}{4}$  = 1 Foot

**PARTICULARS OF FORMULA**  
 DRAFT — 16.5 FEET ✓  
 SPEED — 9½ KNOTS ✓  
 B — 56.5 INCHES ✓  
 L — 53 " ✓  
 1<sup>st</sup> No — 70.7 ✓  
 2<sup>nd</sup> No — 16323.8 ✓

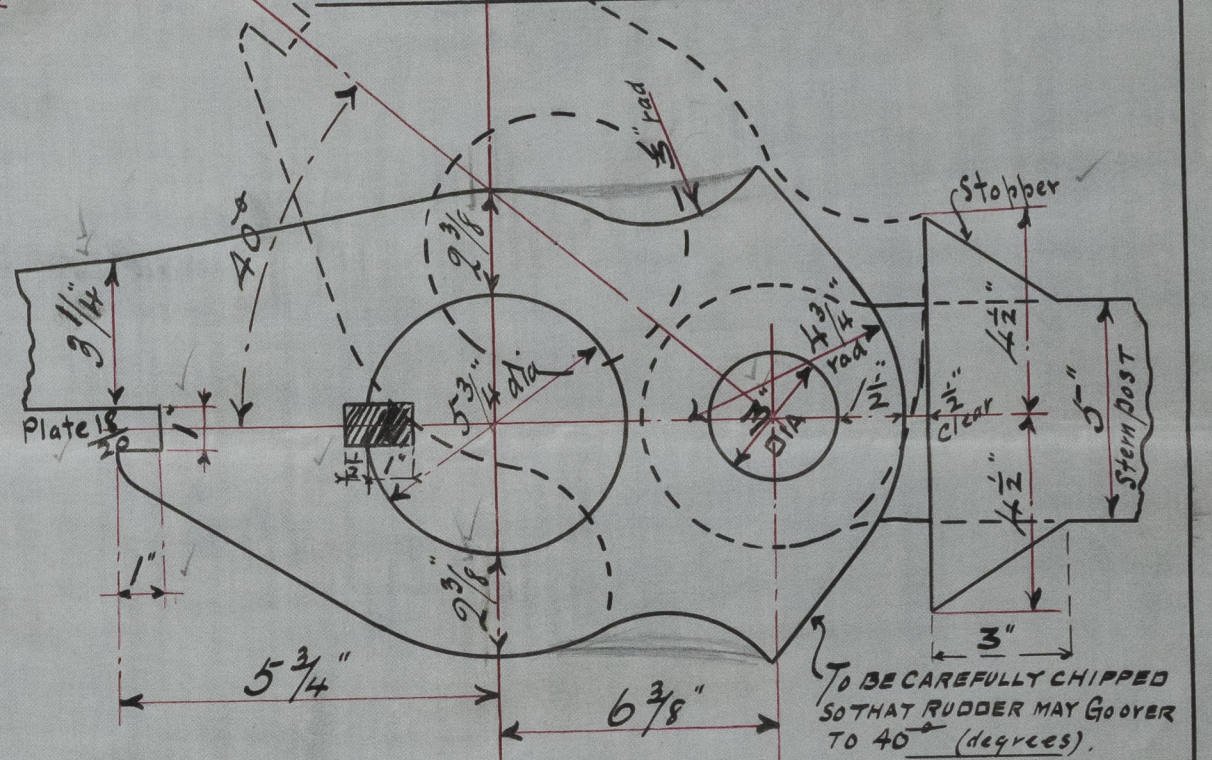


ENLARGED SKETCH OF STOPPER GUDGEONS B & D.

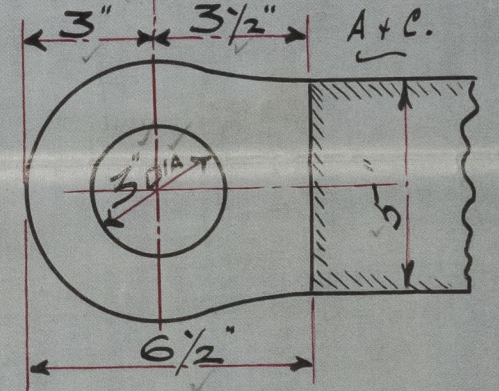
Scale 3 inches = one foot



PLAN OF STOPPER GUDGEONS.



PLAN OF GUDGEONS.



Rec'd from Lloyd's  
 9/12/03.

C.B.  
 7.12.03.



J.S.S. Jeanne

Newcastle Report

N<sup>o</sup> 47.243

Newcastle-on-Tyne  
Messrs. Wood, Skinner's

No. 118

Rudder Plan

Also No. 119

J.S.S. Simone

Newcastle Report

N<sup>o</sup> 47036



© 2020

Lloyd's Register  
Foundation

008061-008067-0134