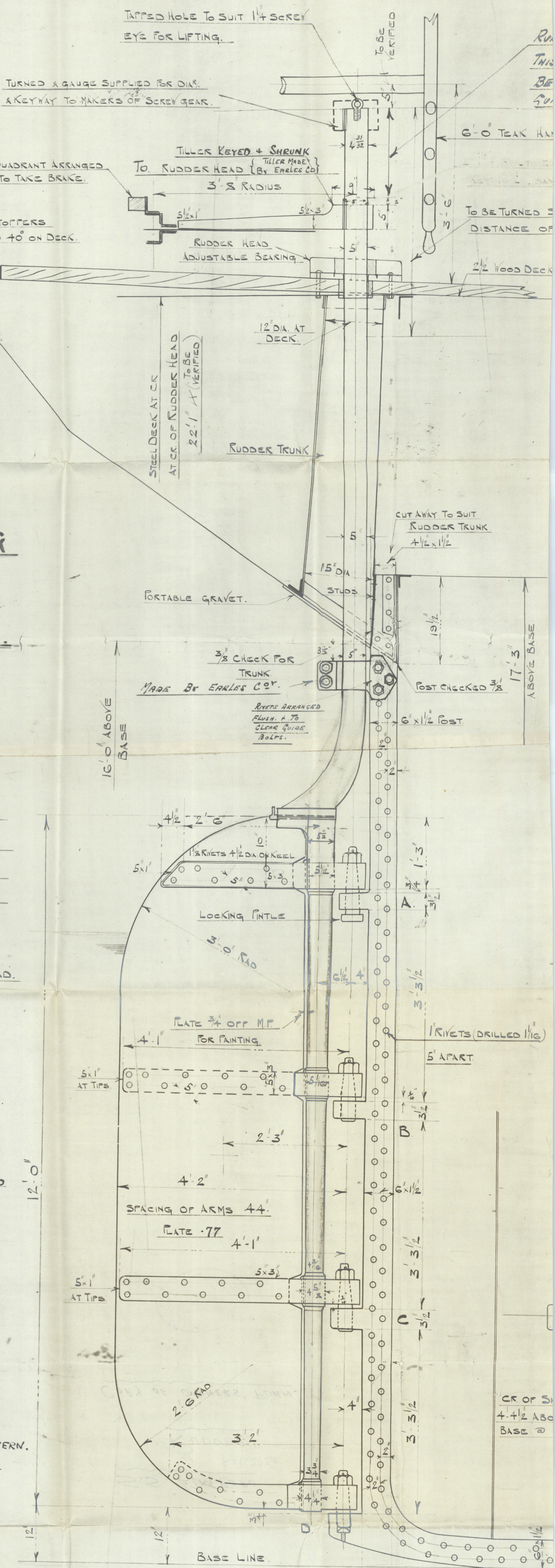


PARTICULARS WILL BE
SENT TO RUDDER MAKERS
GIVING POSITION OF STERN POST
GUDGEONS, & OVERALL LENGTH
OF RUDDER HEAD ABOVE BASE.



Nº 678.
STERNFRAME & RUDDER
PROPELLER BRACKETS
SHAFT TUBE & BOSSING.

SCALE 1" = 1 FOOT.

RUDDER DETAILS 3" = 1 FOOT.

TO LLOYDS TESTS.

MATERIALS:-

RUDDER	FORGED INGOT STEEL
STERNFRAME	" " "
TILLER	" " "
PROPELLER BKTS.	CAST STEEL

AREA = 41.8 TO FORE SIDE OF MAIN PIECE.

CR OF GRAVITY 2.25 AFT OF CR OF FINTLES.

A x D = 34.0 SPEED 10 1/2 Kts. 5" RUDDER HEAD.

STERNPOST:-

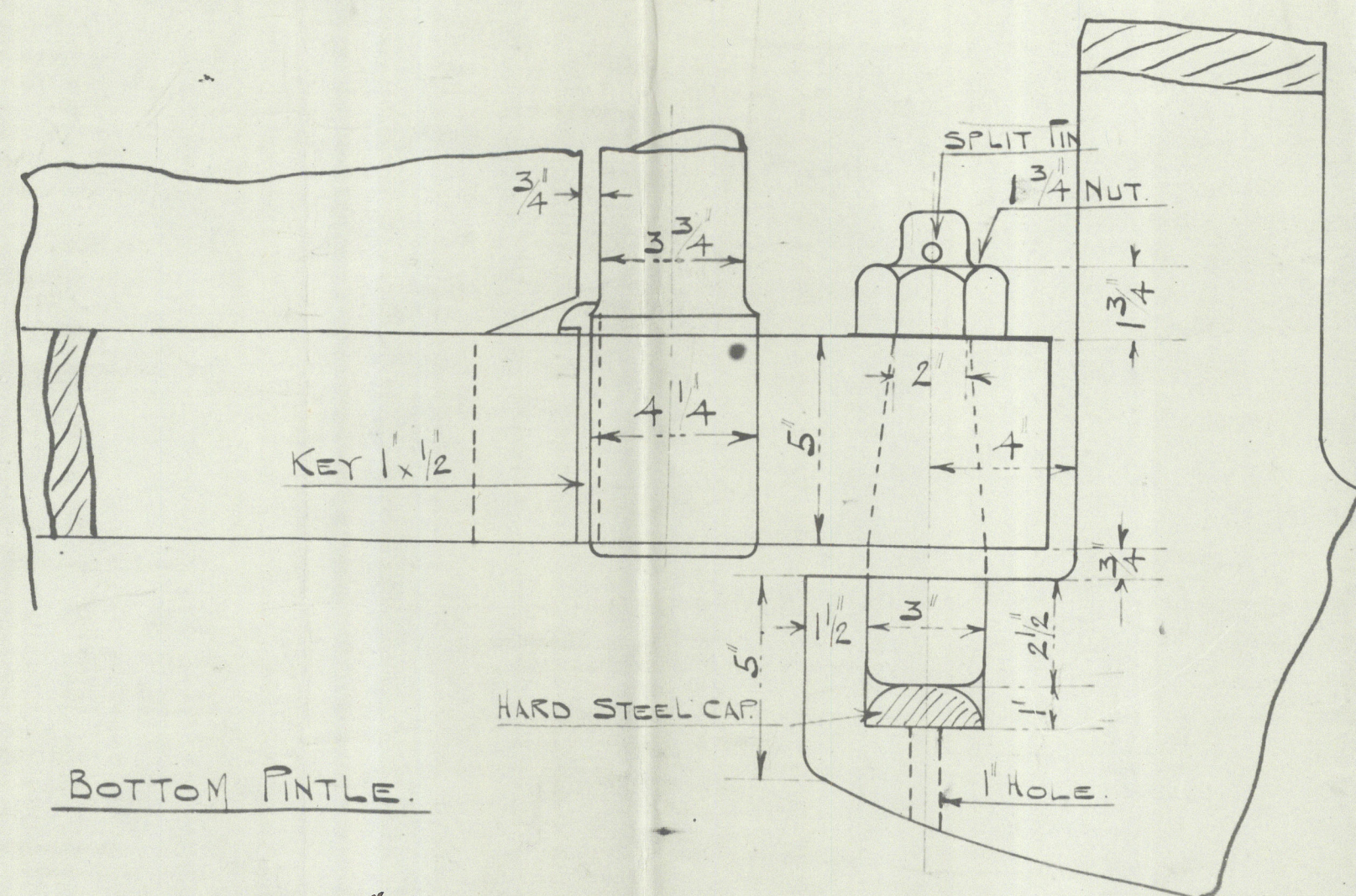
TO BE IN ONE PIECE. GUDGEONS FORGED ON SOLID. CHECKS CUT IN AT TOP FOR TRANSOM & RUDDER TRUNK & AT HEEL FOR KEEL PLATE. GUDGEONS BORED TRUE FOR FINTLES. 1 1/16" HOLES DRILLED FOR RIVETS FACED AT HEEL FOR PROPELLER BRACKET CONNECTION. MAKING GUIDE CLAMP. FOR RUDDERHEAD.

RUDDER:-

RUDDER STOCK TO BE IN TWO PIECES MACHINED WHERE SHOWN. KEYWAYS CUT TO GAUGES. ARMS KEYED & SHRUNK ON. FINTLES FITTED ARMS DRILLED FOR RIVET HOLES & COUNTERSUNK ON OPPOSITE SIDE TO PLATE. COUPLING MACHINED & FITTED.

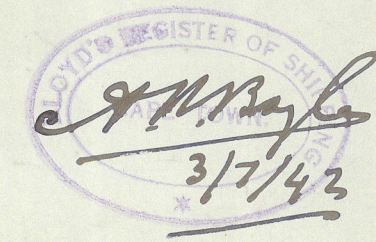
PROPELLER BRACKETS:-

TO BE AS SHOWN. FACES OF BOSS & PALMS TO BE MACHINED. HOLES DRILLED & COUNTERSUNK. PATTERNS, TEMPLATE TO BE MADE BY SHIPBUILDERS. FOR CONTRACTORS TO MAKE THEIR OWN PATTERN. (SEE SEPARATE PLAN.)



S.S. 'ZIMPOPO'

COPY OF DRAWING
RECEIVED FROM OWNERS.



S.S. LIMPOPO

L.A. 7735.

RUDDER.

COPY OF OWNERS' PLAN.



© 2021

Lloyd's Register
Foundation

008158-008167-0170