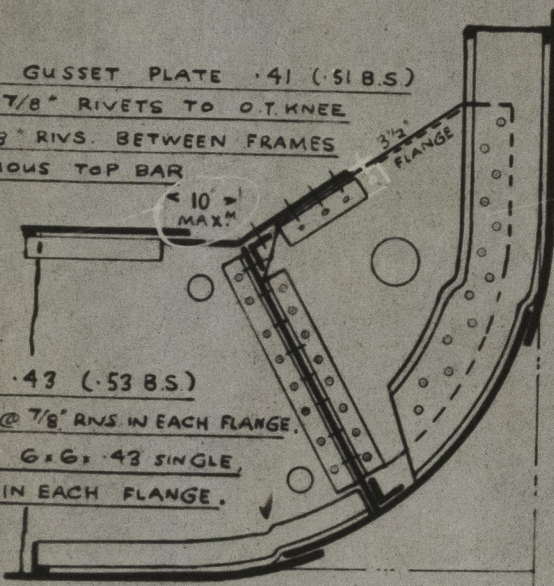


Nº 506.

ALTERNATIVE ARRANGEMENT OF
TANK MARGIN CONNECTION.

SCALE: 1/2" = 1 foot.

CONTINUOUS GUSSET PLATE .41 (.51 B.S.)
WITH 6 @ 7/8" RIVETS TO O.T. KNEE
AND 6 @ 7/8" RIVS. BETWEEN FRAMES
TO CONTINUOUS TOP BAR



INSIDE LUGS: 3 1/2 x 3 1/2 x .43 (.53 B.S.)

SINGLE, WITH 8 @ 7/8" RIVS. IN EACH FLANGE.

FORD OF 7/5 LEN. FORD. 6 x 6 x .43 SINGLE,
WITH 16 @ 7/8" RIVS. IN EACH FLANGE.

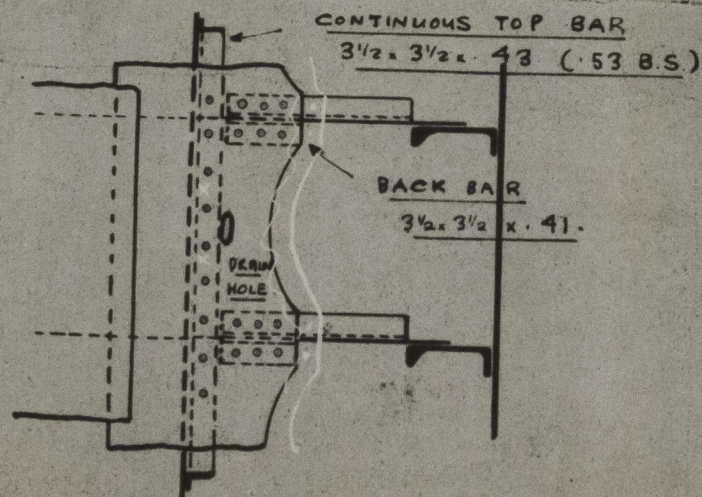
OUTSIDE LUGS: 3 1/2 x 3 1/2 x .43 (.53 B.S.)

SINGLE, WITH 8 @ 7/8" RIVS. IN EACH FLANGE.

FORD OF 7/5 LEN. FORD. 6 x 6 x .43 SINGLE
WITH 16 @ 7/8" RIVS. IN EACH FLANGE.

ALL OTHER PARTICULARS

AS PER MIDSHIP SECTION.



© 2020

JOHN READHEAD & SONS, LTD

SHIPBUILDERS, ENGINEERS &C.,

SOUTH SHIELDS.

008344-008353-0127-1