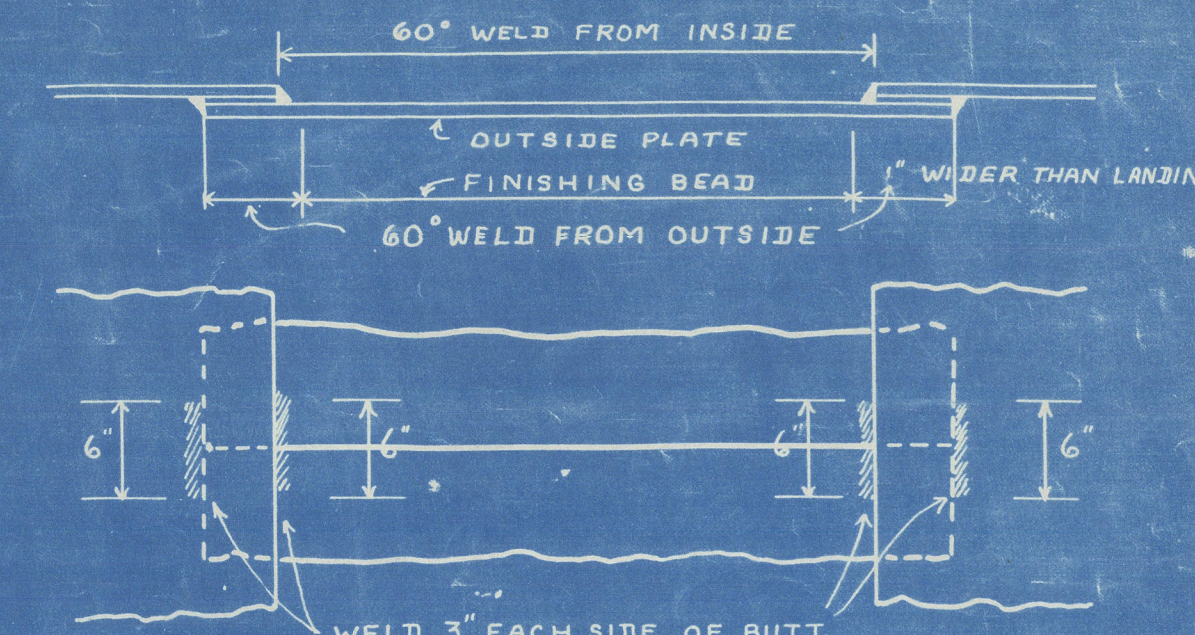


LENGTH B.P.	416'-0"
BREADTH EXTR.	57'-1"
BREADTH MLD.	56'-10 1/2"
DEPTH MLD. UPPER DK.	37'-4"
DEPTH MLD. SECOND DK.	28'-7"
DEPTHS TO LENGTH-UPPER DK.	11.14



REVISIONS	
JULY 21/14	RE DRAIN HOLES.
AUG. 21/14	A DETAIL SHOWING W.T. FLOORS AT C.V. KEEL HAS BEEN ADDED (SEE BELOW AT LEFT) UPPER & SECOND DE PLATING NOW JOGGLED INSTEAD OF TAPERED LINERS.
JAN. 15/42	RE DRAIN HOLES - SEE NOTE.
FEB. 3/42	NOTE ADDED - RE CEMENT CHECKS

ENGINEERING DEPARTMENT
MIDSHIP SECTION

DATE NOV 25/91 DRAWING NO. 30574
Foundation

ISSUED
MAR 7 1942
BURBANK DRY DOCK CO. LBS
PAUL DEPARTMENT
WILSON WINGGOTTEN

WELDING FOR
FLOORS WITH
SINGLE TOP &
BOTT. BARS.

REVISIONS
APR. 29/42 DRAIN HOLE
REVISED

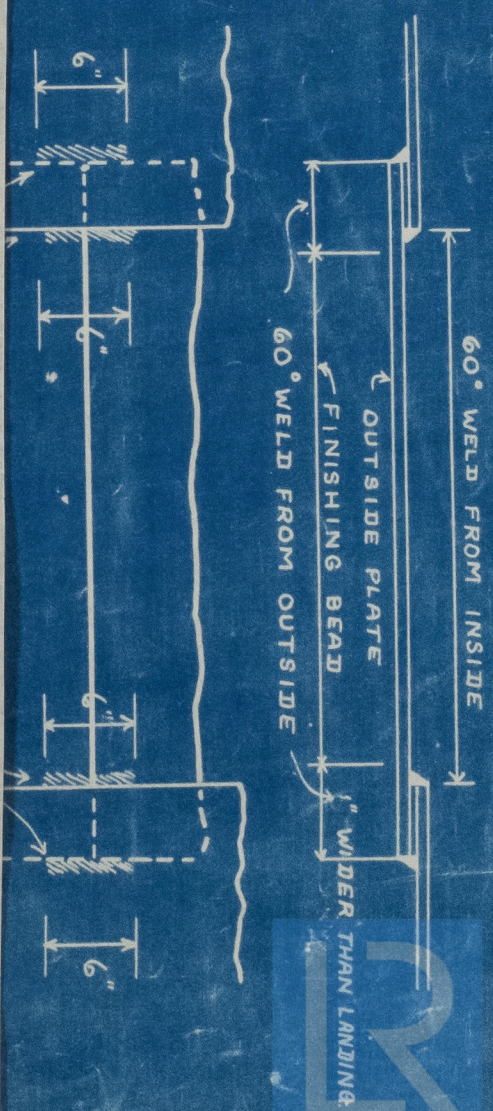
WELDING FOR
FLOORS WITH
DOUBLE JOINT

008364.008374-0001

WELDING NOTES

FLAT KEEL WELD BUTTS FROM INSIDE (WELD IN WAY OF C.V.K. BARS AND SEAMS ONLY). DO NOT COMPLETE WELD UNTIL C.V.K. AND CARBOARD STRAKES ARE BOLTED UP. WILL COME RIVETED COMPLETE EXCEPT IN WAY OF BUTTS OF PLATING. SHORT BARS APPROX. 15" x 30" LONG TO BE INTRODUCED HERE AND FITTED AFTER C.V.K. IS IN PLACE AND BUTTS WELDED

BOTTOM
SHELL
PLATING



1000-473800-000