

# Lloyd's Register of Shipping.

## SURVEYS FOR FREEBOARD.

### (CONDITIONS OF ASSIGNMENT.)

 Index No. \_\_\_\_\_  
 (For London Office only).

MAR 1955

Ship's Name "A M A Z O N E"

Port of Survey Trelleborg.

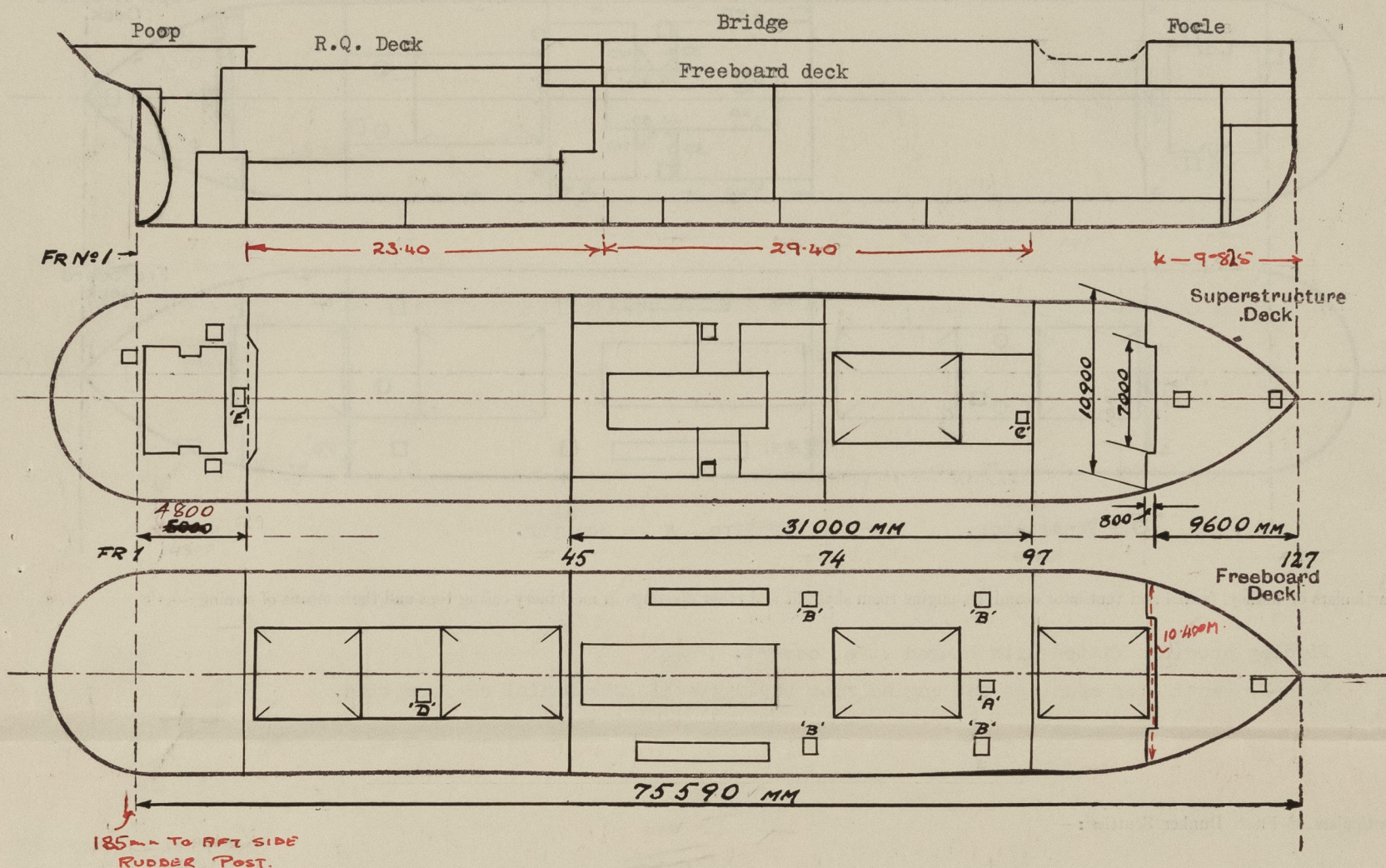
Official Number 9502

Surveyor's Signature *L. Lönnberg*

Nationality and Port of Registry Swedish, Malmö.

Date of Survey March, 1955.

Disposition and dimensions of superstructures, trunks, deckhouses and machinery casings to be inserted in the diagrams and tabular statement:—



Particulars of Superstructures, Trunks, Casings, Deckhouses.								
T = Top R = Riveted. Bkt = Bracket. B. = Bottom.	Coaming mm.	Plating mm.	Stiffeners	Spacing mm.	End Attachments of Stiffeners	Size of Openings mm.	Height of Sills mm.	Height of Casings mm.
Poop Bulkhead ...	-	9	75x10 mm.	790-750	None.	None.	-	900 Above RQD.
Raised Quarter Deck Bulkhead ...	?	2	?	?	?	?	?	?
Bridge, After Bulkhead ...	-	9	4 1/2 x 3" x .36	820	R.to bkt. T & B.	2 1/4 615x440	305	850 above RQD.
Bridge, Forward Bulkhead ...	12	8	7 1/2 x 3" x .55 24" x 3" x .44 web	800-730	Bkt. T. & B. Lugged T. & B.	2 1/4 1220x925	610	2135
Forecastle Bulkhead ...	-	9	2 1/2" x 2" x 3mm.	600	None.	1430x620	500	2145
Trunk, Aft ...								
Trunk, Forward ...								
Exposed Machinery Casings on Freeboard or Raised Quarter Decks ...								
Exposed Machinery Casings on Superstructure Decks ...								
Machinery Casings within Superstructures not fitted with Class I Closing Appliances ...								
Deckhouses on Flush Deck Ships ...								

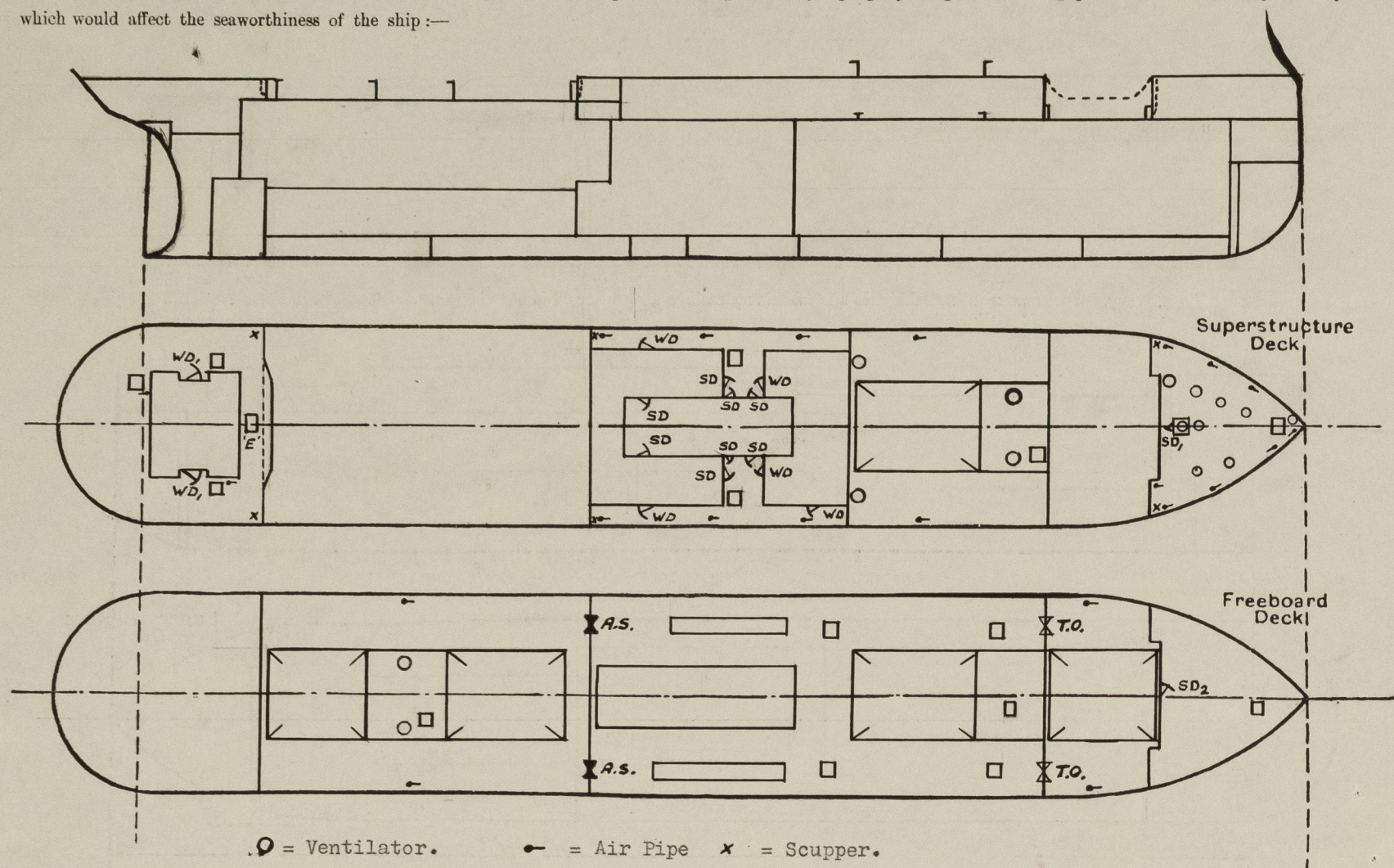
Particulars of Closing Appliances (state if capable of being manipulated from both sides).

Poop Bulkhead ...	No opening.
Raised Quarter Deck Bulkhead ...	?
Bridge, After Bulkhead ...	Opening 615x440mm. access to store closed W.T. by bolted plate. Bolted plate fitted with hinging glass side scuttle and hinged dead light on weather side stbd. side, in ER, p.s.
Bridge, Forward Bulkhead ...	Portable plates secured by hook bolts.
Forecastle Bulkhead ...	Hinged steel door manipulated from both sides.
Exposed Machinery Casings on Freeboard or Raised Quarter Decks ...	
Exposed Machinery Casings on Superstructure Decks ...	
Machinery Casings within Superstructures not fitted with Class I Closing Appliances ...	
Deckhouses on Flush Deck Ships ...	



# PARTICULARS OF PROTECTION TO OPENINGS, ETC.

The following diagrams should be used to indicate the positions of cargo and coaling hatchways, gangway, cargo and coaling ports, ventilators, companionways, etc., which would affect the seaworthiness of the ship:—



Particulars of fiddle, funnel and ventilator coamings, engine room skylight and other openings in machinery casing tops and their means of closing:—

Fiddle openings fitted with hinged steel covers. ✓

Funnel, ventilator coamings and engine room skylights of substantial construction.

Particulars of Flush Bunker Scuttles:—

None.

Particulars of Companionways:—

Companionway to crew accommodation on fore. deck as per sketch.

Stiffeners at sides: 2" x 2" x 1/4".

A.S. = Access to store and bunker.

T.O. = Tonnage opening; Sill = 610 mm. ✓

W.D. = Wood Door; Sill = 430 mm. ✓

W.D.1 = " " " " = 500 mm. ✓

S.D. = Steel Door; Sill 370 mm.

S.D.1 = " " " " 230 " ✓

S.D.2 = " " " " 500 " ✓

All doors capable of being manipulated from both sides.

Particulars of Ventilators in exposed positions on freeboard and superstructure decks:—

Ventilator coamings are of strong construction and provided with efficient means of closing.

Forecastle Deck:

7 - 160 mm. diam. coaming 6 mm., height 525 mm. } 415  
1 - 295 mm. " " 5.5 " " 480 mm. }  
1 - 225 mm. " " 9 " " 185 mm. }  
on top of companionway.

Raised Quarter Deck:

2 - 285 mm. diam. coaming 6 mm., height 570 mm. 760

Bridge Deck:

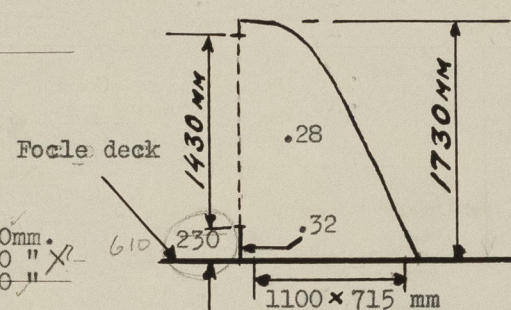
2 - 385 mm. " " 6 " " 550 mm. 760  
2 - 385 mm. " " 7 " " 2850 mm.

Ventilators adequately clipped to bridge front. ✓

Particulars of Air Pipes in exposed positions on freeboard, raised quarter, or superstructure decks:—

All air pipes are of gooseneck type and provided with efficient means of closing. ✓

Forecastle Deck: 2" - 3" diam. height 4" - 19". 15"  
Freeboard " : 2" diam. height 27" - 36".  
Bridge " : 2" " " 21" - 36".  
R.Q. " : 2" " " 27" - 30".  
Poop " : 1 1/2" - 2 1/2" diam. height 16" - 18".



Particulars of Gangway Cargo and Coaling Ports:—

None.

Particulars of Scuppers and Sanitary Discharge Pipes:—

Forecastle deck drained port and starboard (D = 2") through forecastle bulkhead on to freeboard deck.

Bridge deck drained port and starboard (D = 3 1/2") on to Raised Quarter Deck.

Poop deck drained port and starboard (D = 2") through poop bulkhead on to Raised Quarter Deck.

Sanitary discharges from poop, amidship and forecastle accommodations are led overboard through shell above W.L. and fitted with Non-Return-Valve. ✓

Particulars of Side Scuttles:—

All side scuttles (D = 12") are of strong construction and are fitted with hinged dead lights. ✓

Vertical distance of Sill of lowest Side Scuttle above top of keel ---

Particulars of Guard Rails:—

Forecastle Deck:

Open rails, height 970 mm., 3 rods spaced 1.415 mm. ✓

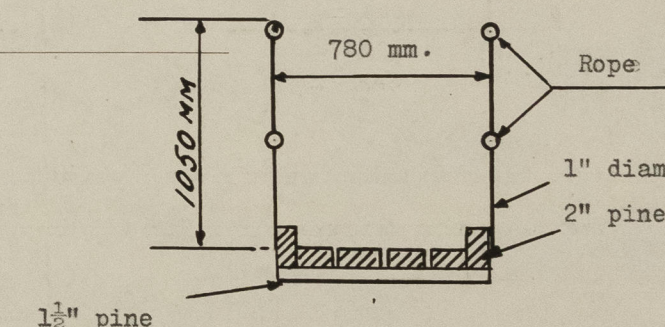
Poop Deck:

Open rails, height 915 mm., 3 rods spaced 1.300 - 1.500 mm.

Particulars of Gangways, Lifelines, etc.:—

Between Forecastle and Bridge Deck on starboard side.

Rods spaced 730 mm.



## Particulars of Freeing Arrangements.

	Length of Bulwark	Height of Bulwark	Size of Freeing Ports	Number each side	Area each side	Rule area each side
After Well ... ..	22.20 16700 mm.	1065 mm.	900x510 mm.	3	1.377 m <sup>2</sup>	1.354 m <sup>2</sup>
Forward Well ... ..	7600 mm.	1185 mm.	660x485 mm.	2	640 m <sup>2</sup>	836 m <sup>2</sup>

State position of each freeing port ... .. After Well:—

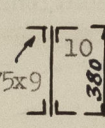
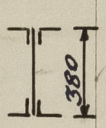
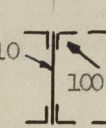
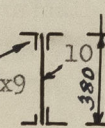
(Exposed position and height above deck edge) Forward Well:— 290 mm. After Well:— 210 mm.

State whether the freeing ports are fitted with shutters, bars, or rails, and give particulars of such:— One 3/4" rod and hinged .28 Steel Shutter.

Additional area where sheer is less than standard. ---



**PARTICULARS OF PROTECTION TO OPENINGS, ETC.**

HATCHWAYS ON FREEBOARD AND SUPERSTRUCTURE DECKS.											
Free board Deck											
Description of Hatchway	F.P. Store	Cargo No.1	Cargo No.2	Escape "A"	Trimming "B"	Bunker	Cargo No.3	Cargo No.4	Escape "D"	F.P. Store	
Dimensions of Hatchway	570x635b	7200x4880	8400x5490	675x615	850x665	P=7000 S=7800	7200x4870	4800x4870	490x490	750x675	
COAMINGS	Height above Deck	210	800	340	215	215	1150	1150	510	250	
	Thickness	8.5	14	13	14	15	14	12.5	7	9	
	Stiffeners	-	200x11	-	-	-	-	-	-	-	
	Brackets, Stays	-	bulb	-	-	-	-	4	3	-	
HATCH BEAMS	Number	/	4	5	/	/	4	3	/	/	
	Spacing	/	1440	1400	/	/	1440	1200	/	/	
	Scantling and Sketch	/			/	/			/	/	
	Bearing Surface	/	4"	3"	/	/	3"	3"	/	/	
FORE AND AFTERS	Number	/	/	/	/	/	/	/	/	/	
	Spacing	/	/	/	/	/	/	/	/	/	
	Unsupported Lengths	/	/	/	/	/	/	/	/	/	
	Scantling* and Sketch	/	/	/	/	/	/	/	/	/	
HATCH COVERS	Material	Steel	Wood	Wood	Wood	Wood	Wood	Wood	Steel	Steel	
	Thickness	4 mm.	2 1/2"	2 1/2"	2"	2"	2 1/2"	2 1/2"	7 mm.	9.5mm	
	How fitted	Hinged	Fore and aft	Fore and aft	Slab hatch	Slab hatch	Fore and aft	Fore and aft	Hinged	Hinged	
	Bearing Surface	W.T.	3"-4"	3"	1 1/2"	2"	2"	4"	4"	W.T.	W.T.
Spacing of Cleats	6 toggles	610	610	400	610	610	610	610	2 toggles	6 toggles	
Number of Tarpaulins	-	2	1	1	1	2	2	2	-	-	

\*Are wood fore and afters steel shod at all bearing surfaces? No.

Are battens and wedges efficient and in good condition? Yes.

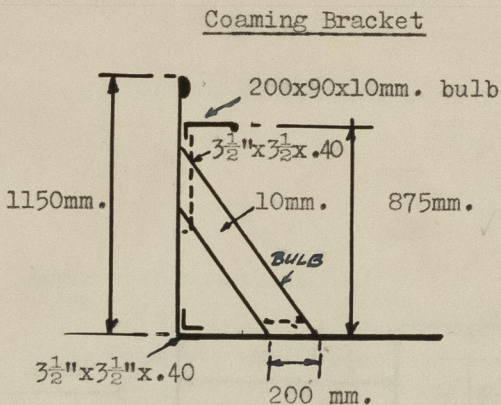
Are tarpaulins in good condition and in accordance with rule requirements? Yes.

Are lashings provided in accordance with rule requirements? Yes.

**HATCHWAYS:-**

	Bridge deck			Poop deck		
Description.	Cargo No.2	Bunker	Escape "C"	Escape "E"	Dunnage Store	Prov. Store
Dimensions. mm.	8400x4870	900x850	460x320	605x470	760x735	900x580
<b>COAMINGS:</b>						
Height above dk. mm.	800	810	455	175	175	185
Sides	13	9	6	9	9.5	10
Thickness	10	9	6	9	9.5	10
Stiffeners at sides	230x90x10	-	-	-	-	-
<b>HATCH BEAMS:</b>						
Number	5	-	-	-	-	-
Spacing	1400	-	-	-	-	-
Bearing Surface	3"	-	-	-	-	-
<b>HATCH COVERS:</b>						
Material	Wood	Wood	Steel	Steel	Steel	Steel
Thickness	2 1/2"	2 1/2"	8 mm.	9 mm.	10 mm.	10mm.
How fitted	F & A	Slab hatch	Hinged	Hinged	Hinged	Hinged
Bearing surface	4"	3"	W.T.	W.T.	W.T.	W.T.
Spacing of Cleats	610	590	2 toggles	6 toggl.	6 toggl.	6 toggl.
No. of tarpaulins	12	2	-	-	-	-

Particulars of any special features:-



Endorsement at first survey and at surveys for renewal of Certificate

The fittings and appliances are in accordance with the particulars shown on this form (or as now modified) and are in good condition.

**Timber deck cargo particulars:**

Aux. steering gear fitted.

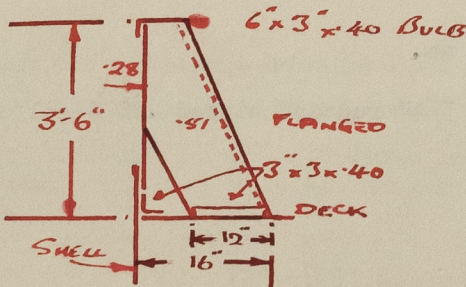
Eyeplates riveted or welded to stringer plate and to hatch coaming horizontal stiffener. EYEPLATES ON STRINGER PLATE SITUATED IN WAY OF DECK BEAMS & CLOSE TO STRINGER BAR

Spaced not more than 10'-0" apart and not more than 6'-0" from poop, bridge and forecastle bulkheads.

3 1/2" x .44" flat bars for 11"x3 1/2" uprights welded to stringer plate not more than 10'-0" apart with 1" diameter portable sockets over slotted into bulwark rail bar.

Lashings of 5/8" diam. - short link chain and stretching screws for adjusting and fitted with slip hooks.

**DETAIL OF BULWARKS.**



© 2020

Lloyd's Register Foundation