

SECRET AND CONFIDENTIAL

MIDSHIP SECTION.

DIMENSIONS: 320'-0" x 41'-6" EX. x 25'-6"

ISHERWOOD SYSTEM (PATENT)

1/2" SCALE.

NUMERALS.

BREADTH 41.33

DEPTH 25.50

60.88 TRANS. NO.

LENGTH 321.6

21492.5 LONG. NO.

1/2" UPPER DECK BRIDGE DECK 97.2

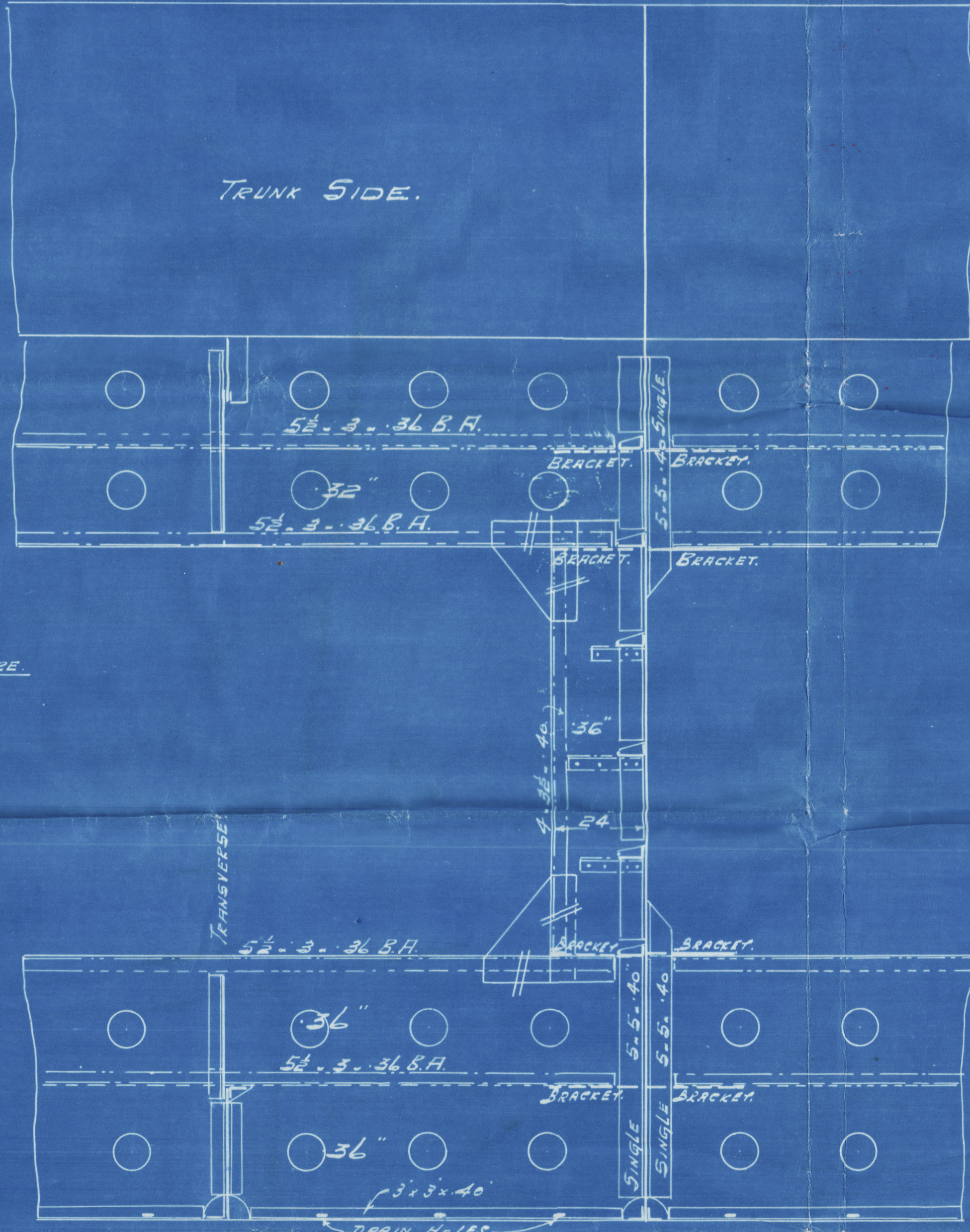
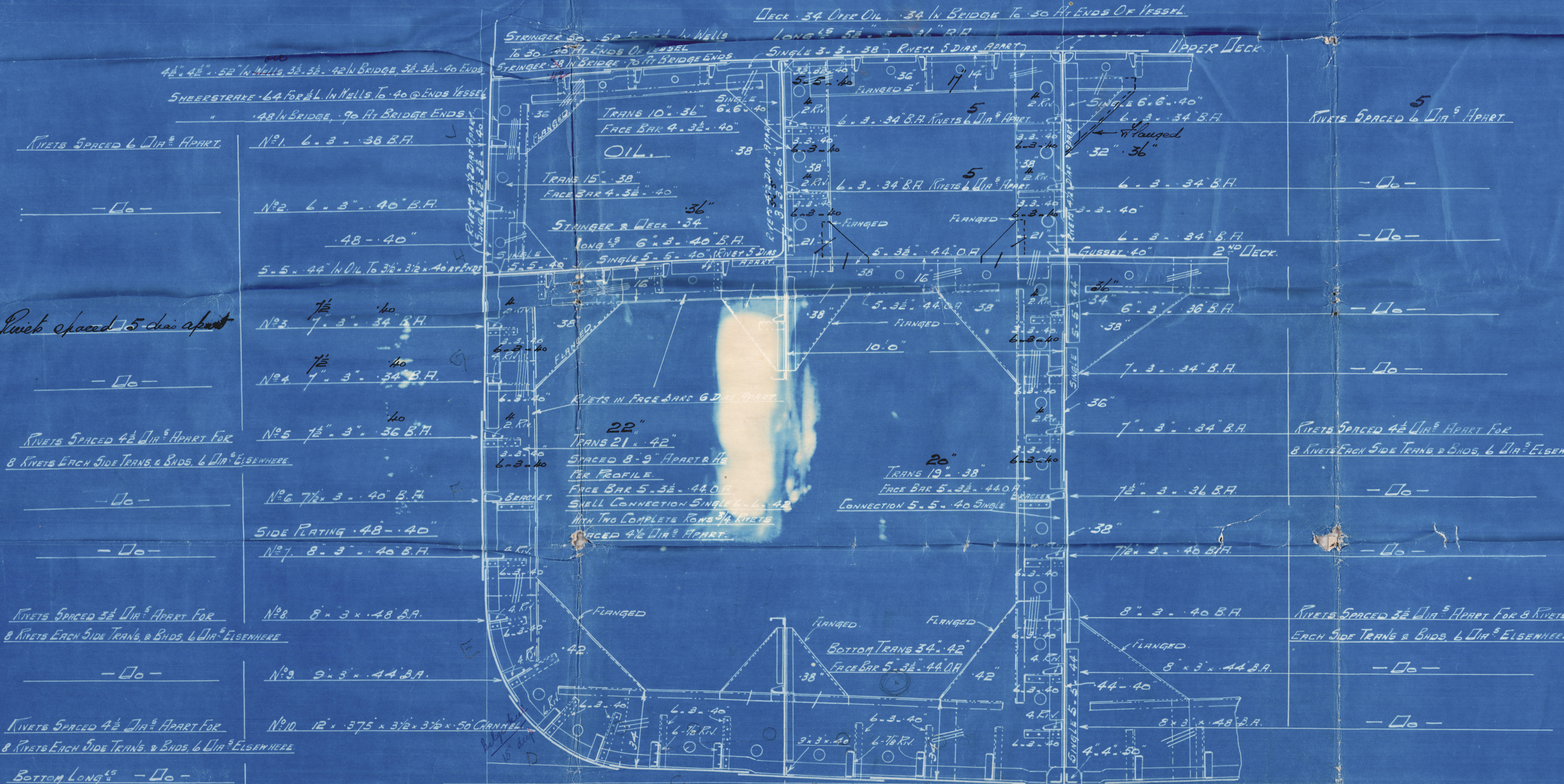
DRAFT 20'-6"

Note: Shell plating increased in way of transverse framing.

Equipment as per Rules.

DRAIN HOLES IN ALL LONGITUDINALS & STIFFENERS 2'-1" SPACED 18" APART.

Recommendations for additional strengthening (in addition to usual plate & modifications consequent thereon) beyond ordinary mechanical practice for tank vessels, in view of tanks having to be discharged at sea. Oil tanks are also of reduced length.



GENERAL NOTES.

ALL BOTTOM PLATE & 10 RIVET BRACKETS & WARE SHOWN, FLANGED ON FACE.

LIGHTENING HOLES IN TRANSVERSES TO BE AT LEAST 8" CLEAR OF NOTCHES FOR LONG. & MAINTAIN SAME RELATIVE POSITION TO SHELL AS SHOWN ON PLAN. NOTCHES FOR LONG. TO BE WELL ROUNDED AT CORNERS & NOT ROUGH PUNCHED.

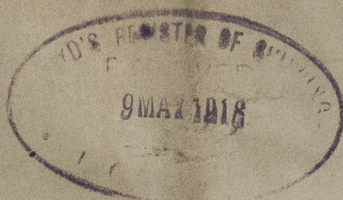
BRACKETS AT & BELOW 2ND DECK .38 THICK. ABOVE 2ND DECK .38 THICK.

LONG. TO SHELL & MIDDLE LINE BULKHEAD, BELOW 2ND DECK BASED ON A SPAN OF 8'-0". LONG. TO TANK DECK, MIDDLE LINE & IN TANKS, UPPER DECK AT TRUNK, & TRUNK SIDES BASED ON A SPAN OF 8'-0".

J. W. ISHERWOOD,
4, LLOYD'S AVENUE,
LONDON, E.C.
ISHERWOOD SYSTEM OF
SHIP CONSTRUCTION
(PATENT)

SUNDERLAND

Messrs SHORT Bros & Co

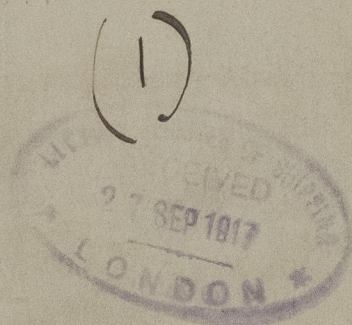


MIDSHIP SECTION

No 410

R.F.A. CELEROL

See Report No 27063



No. 410. Plans 1 - 10.



© 2020

Lloyd's Register
Foundation

008472-008480-0065