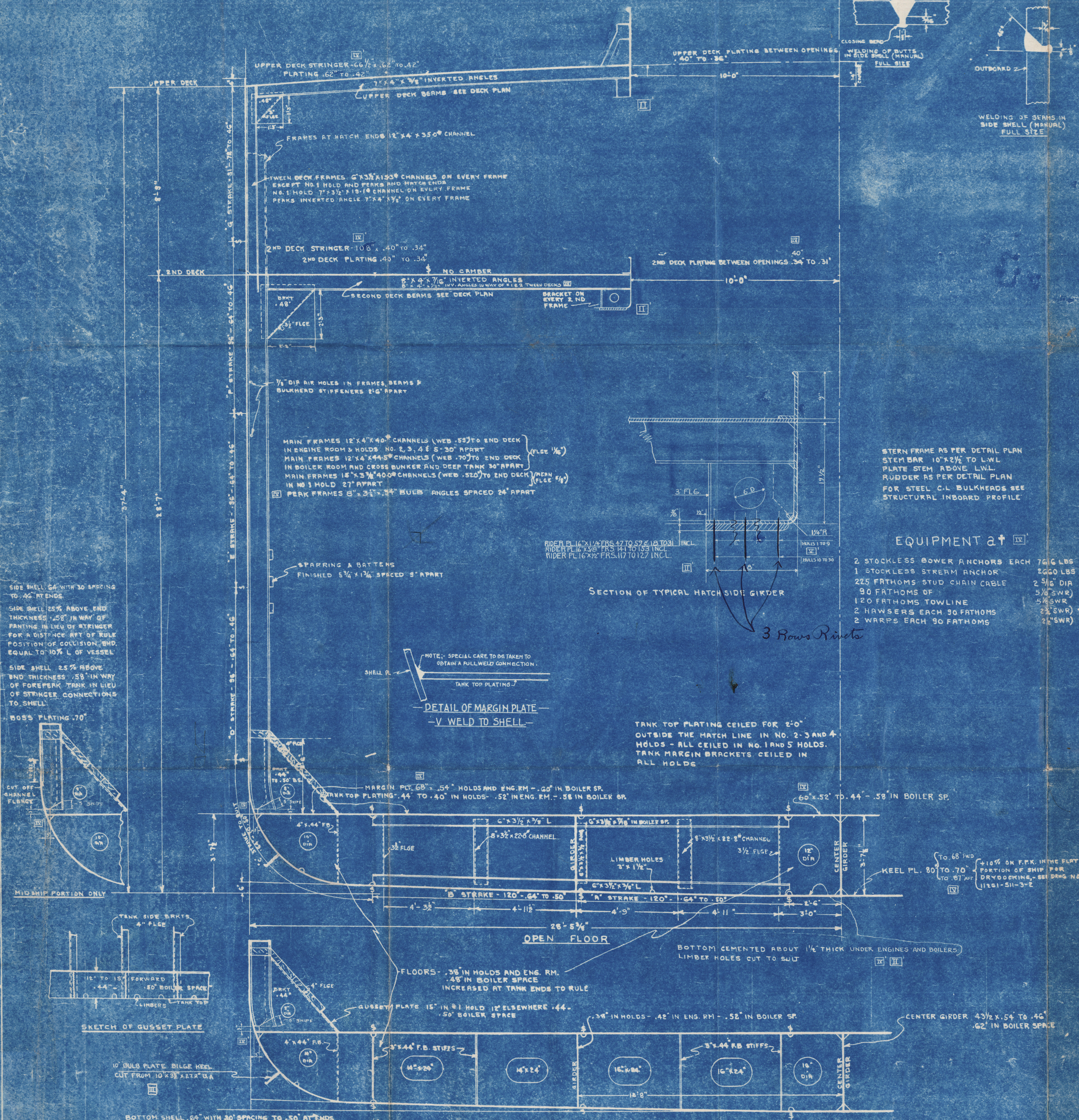
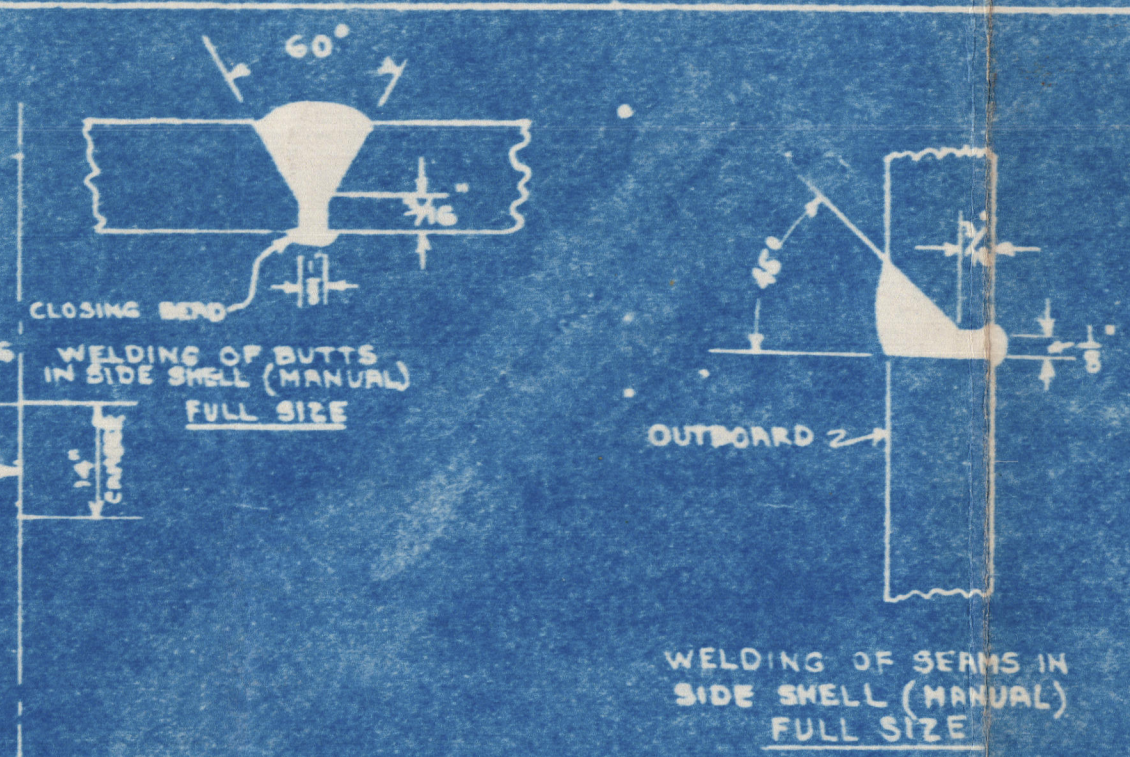


GROSS AREA 2374 A 33/4 = 6-63 58 FT
NET AREA 2174 A 32 = 6-121 58 FT

WELDING NOTES

INNER BOTTOM BUTTS V WELDS.
MARGIN PLATE TO SHELL SEE DETAIL

CENTER GIRDER 3/8" CONTINUOUS TOP AND BOTTOM
SIDE GIRDER 5/16" CONTINUOUS TOP AND BOTTOM
SIDE GIRDER 3/8" CONTINUOUS TOP AND BOTTOM
IN ENGINE ROOM.
FLOORS 3/4" CONTINUOUS BOTH SIDES



STERN FRAME AS PER DETAIL PLAN
STEM BAR 10" X 2 1/2" TO L.W.L.
PLATE STEM ABOVE L.W.L.
RUDDER AS PER DETAIL PLAN
FOR STEEL C.L. BULKHEADS SEE
STRUCTURAL INBOARD PROFILE

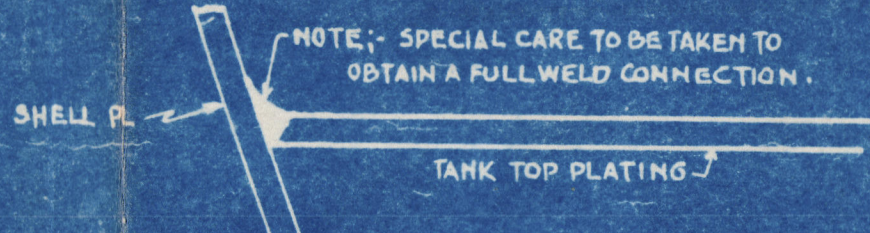
EQUIPMENT at IV

- 2 STOCKLESS BOWER ANCHORS EACH 760 LBS
- 1 STOCKLESS STEAM ANCHOR 2600 LBS
- 225 FATHOMS STUD CHAIN CABLE 2 5/16" DIA
- 90 FATHOMS OF 5/8" SWR
- 120 FATHOMS TOWLINE 5/8" SWR
- 2 HAWSERS EACH 90 FATHOMS 2 3/8" SWR
- 2 WARPS EACH 90 FATHOMS 2 1/2" SWR

SECTION OF TYPICAL HATCHSIDE GIRDER

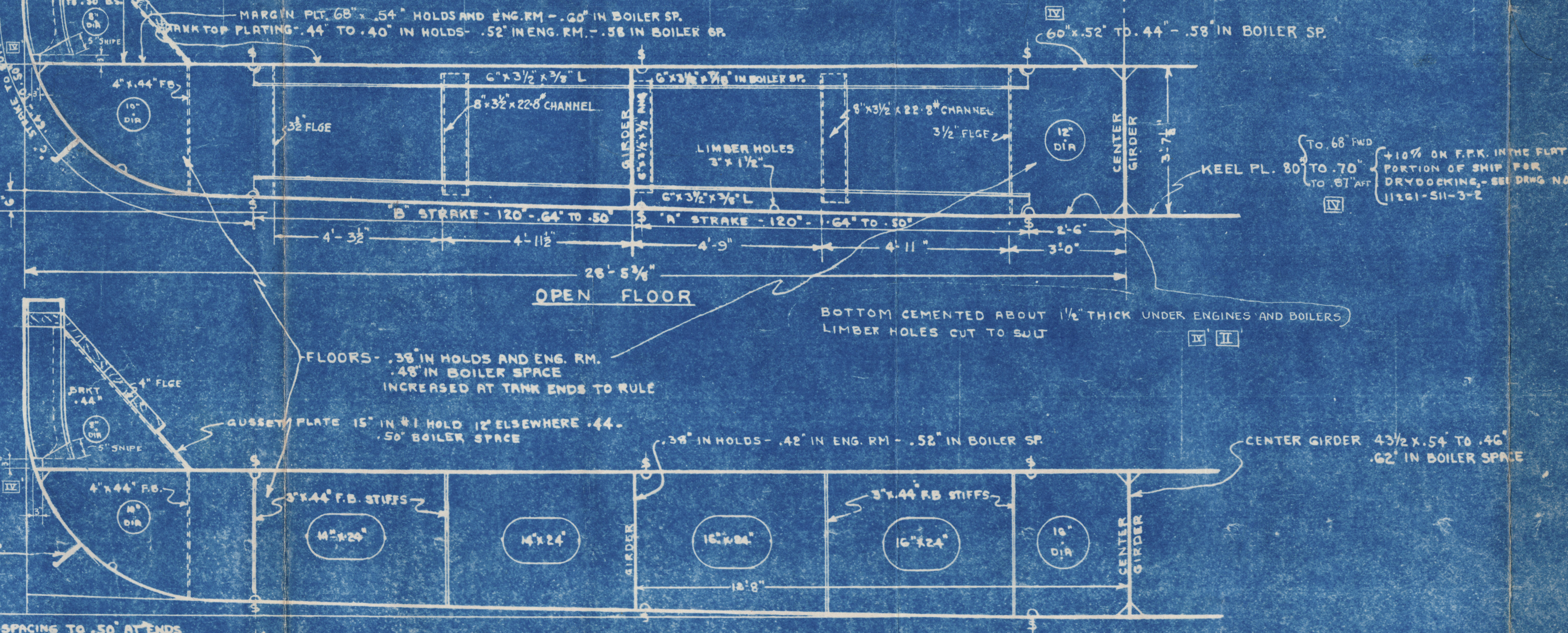


DETAIL OF MARGIN PLATE - V WELD TO SHELL



TANK TOP PLATING CEILING FOR 2'-0" OUTSIDE THE HATCH LINE IN NO. 2, 3 AND 4 HOLDS - ALL CEILING IN NO. 1 AND 5 HOLDS. TANK MARGIN BRACKETS CEILING IN ALL HOLDS

OPEN FLOOR



PRINCIPAL DIMENSIONS.

LENGTH B.P.	56'-10 1/2"
BREADTH MOULDED	37'-4"
DEPTH MOULDED TO UPPER DECK	23'-7"
DEPTH MOULDED TO 2ND DECK	11'-4"

CLASS

LLOYDS REGISTER OF SHIPPING # 100 A1
"WITH FREEBOARD"
SCANTLING SUITABLE FOR A MOULDED DRAUGHT OF 26'10", WHICH IS 18 INCHES IN EXCESS OF THAT FOR A S.S. VESSEL

MARK	ITEM	ALTERATION	BY	DATE	APPROVED	DATE	APPROVED
A		WELDING NOTES: INNER BOTTOM BUTTS V WELDS - MARGIN PLATE TO SHELL SEE DETAIL SKETCH	H.S.	11/25/24			
B		MAIN FRAMES ADDED FOR HOLD 4 TO AGREE WITH DR 11261-511-312. INNER BOTTOM BRACKET TO SHELL ENLARGED 6" 4 STEVITS RELOCATED. DETAIL OF MARGIN PLATE WELD ADDED. WELDING NOTE CORRECTED.	H.S.	11/25/24			
I		IN CLASS "NOTE, MORSHING" EXTREME BOWING CHANGED TO "MORSHING" DRAUGHTING. IN ADDED WITH LLOYDS REGISTER OF SHIPPING LISTED AT 2-27-24	H.S.	11/25/24			
II		HATCH COAMINGS & HATCH SIDE GIRDERS ON BOTH DECKS CHANGED - SECT OF 2ND DECK HATCH SIDE GIRDERS CORRECTED TO SUIT STRUCTURAL PLANS - LOCATION OF PART OF BUTT TO BE CELESTED NOTED.	H.S.	11/25/24			
III		EQUIPMENT 210 FATHOMS STUD CHAIN CABLE CHANGED TO 225 FATHOMS. STEAM CHAINS CHANGED TO 2 1/2" SWR. HAWSERS 5/8" SWR DELETED. PART OF THE ABOVE TO AGREE WITH ALLOWANCE LIST	H.S.	11/25/24			
IV		SHIP WEL REVISOR TO SHIP SHELL EXPANSION PLAN	H.S.	11/25/24			

TODD-BATH IRON SHIPBUILDING CORPORATION
TODD-CALIFORNIA SHIPBUILDING CORPORATION

DESIGN AND ENGINEERING BY
GIBBS & COX, INC.
NEW YORK

S.S. "Ocean Merchant"
MIDSHIP SECTION
As Built

SCALE 1/4" = 1'-0"	DATE NOVEMBER 25, 1940
DRAWN BY D.H.S. L.M.K.	APPROVED [Signature]
TRACED BY J.L.M.K.	APPROVED [Signature]
CHECKED BY [Signature]	APPROVED [Signature]
DR 11261-511-11-2	VAULT # 5192

Lloyd's Register of Shipping
Foundation

Amstelstaed

008 597 - 00 8607 - 0286



© 2020

Lloyd's Register
Foundation

.64
064
704

9520 - 709800 - 665800



© 2020

Lloyd's Register
Foundation