

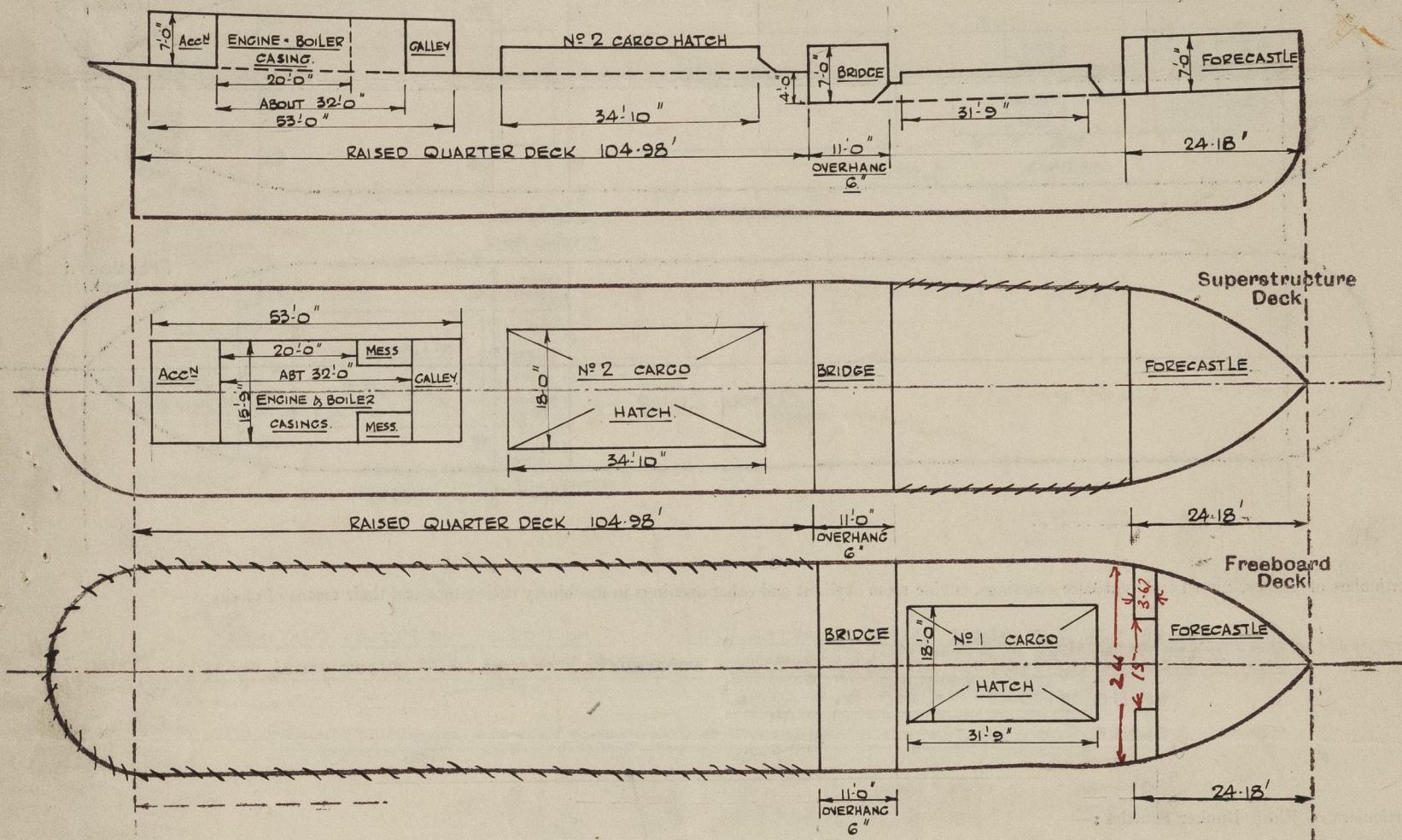
Lloyd's Register of Shipping.

SURVEYS FOR FREEBOARD.

(CONDITIONS OF ASSIGNMENT.)

Ship's Name **"HOLMDALE"** ex **"KYLEBERG"**Port of Survey **WELLINGTON, N.Z.**Official Number **146275**Surveyor's Signature *Wm. D. Lidgett*Nationality and Port of Registry **BRITISH. DUNEDIN, N.Z.**Date of Survey **12th & 14th December, 1943.**

Disposition and dimensions of superstructures, trunks, deckhouses and machinery casings to be inserted in the diagrams and tabular statement:—



Particulars of Superstructures, Trunks, Casings, Deckhouses.

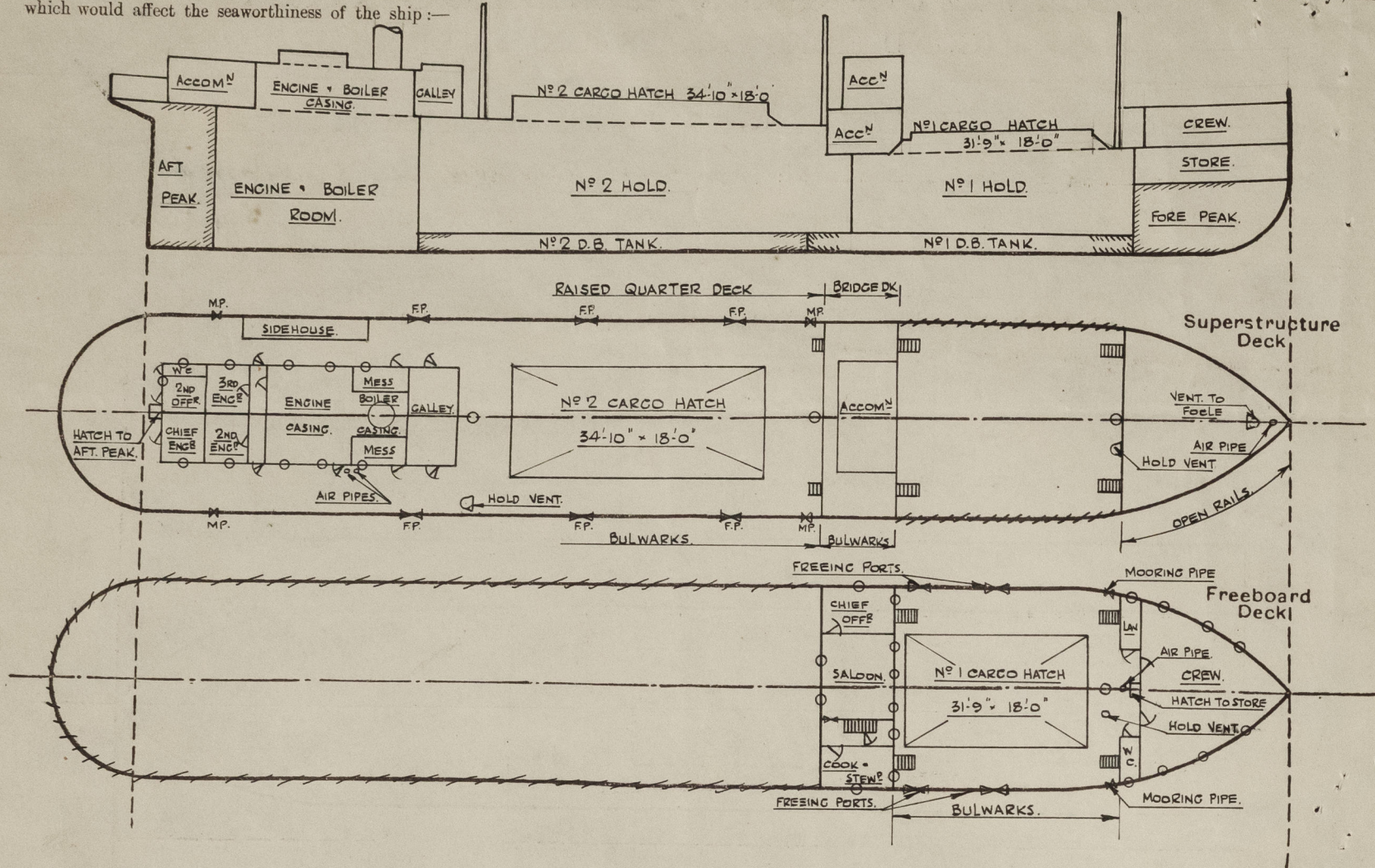
	Coaming	Plating	Stiffeners	Spacing	End Attachments of Stiffeners	Size of Openings	Height of Sills	Height of Casings
Poop Bulkhead ...	—	—	—	—	—	—	—	—
Raised Quarter Deck Bulkhead ...	30"	30"	3" x 3" x 3/8"	30"	NONE	—	—	— ✓
Bridge, After Bulkhead ...	—	—	—	—	—	—	—	—
Bridge, Forward Bulkhead ...	37 1/2"	37 1/2"	NOT SIGHTED.	NOT SIGHTED.	NOT SIGHTED	NIL	—	7'0" ✓
Forecastle Bulkhead ...	32"	26"	3" x 3" x 3/8"	30"	NONE.	5'0" x 23"	18"	7'0" ✓
Trunk, Aft ...	—	—	—	—	—	—	—	—
Trunk, Forward ...	—	—	—	—	—	—	—	—
Exposed Machinery Casings on Freeboard or Raised Quarter Decks ...	32"	26"	3" x 3" x 3/8"	30"	BRACKETED AT TOP.	5'0" x 23"	18"	7'0" ✓
Exposed Machinery Casings on Superstructure Decks ...	—	—	—	—	—	—	—	—
Machinery Casings within Superstructures not fitted with Class I Closing Appliances ...	—	—	—	—	—	—	—	—
Deckhouses on Flush Deck Ships ...	—	—	—	—	—	—	—	—

Particulars of Closing Appliances (state if capable of being manipulated from both sides).

Poop Bulkhead ...	—
Raised Quarter Deck Bulkhead ...	NO OPENINGS. ✓
Bridge, After Bulkhead ...	" " ✓
Bridge, Forward Bulkhead ...	" " ✓
Forecastle Bulkhead ...	HINGED WOOD DOORS. OPERABLE FROM BOTH SIDES. ✓
Exposed Machinery Casings on Freeboard or Raised Quarter Decks ...	HINGED STEEL DOORS TO ENGINE ROOM & GALLEY, HINGED WOOD DOORS TO ACCOM, ALL OPERABLE FROM BOTH SIDES. ✓
Exposed Machinery Casings on Superstructure Decks ...	—
Machinery Casings within Superstructures not fitted with Class I Closing Appliances ...	—
Deckhouses on Flush Deck Ships ...	—

PARTICULARS OF PROTECTION TO OPENINGS, ETC.

The following diagrams should be used to indicate the positions of cargo and coaling hatchways, gangway, cargo and coaling ports, ventilators, companionways, etc., which would affect the seaworthiness of the ship:—



Particulars of fiddley, funnel and ventilator coamings, engine room skylight and other openings in machinery casing tops and their means of closing:—

MACHINERY CASINGS 7'-0" ABOVE RAISED QUARTER DECK. NO FIDDLEY OR FIDDLEY GRATINGS.
ENGINE ROOM SKYLIGHT ON TOP OF CASING STRONGLY CONSTRUCTED OF STEEL WITH HINGED STEEL FLAPS
CAPABLE OF BEING SECURED FROM INSIDE.
FUNNEL & ENGINE ROOM VENTILATOR COAMINGS, ON TOP OF CASING, EXCESS HEIGHT - EFFICIENT.

Particulars of Flush Bunker Scuttles:—

NONE FITTED.

Particulars of Companionways :—

NONE FITTED.

Particulars of Ventilators in exposed positions on freeboard and superstructure decks :—

FORECASTLE DECK - 1 8" VENT. TO CREW'S ACCOM^{MODATION} IN FO'CLE. COAMING 36" ABOVE DK. ✓
MAIN DECK - 1-12 " " " NO¹ HOLD. " ABOVE FO'CLE DK. ✓
RAISED QR. DECK - 1-24 " " " 2 " " 72" ABOVE DK. ✓

ALL VENTS TO SPACES BELOW FREEBOARD OR SUPERSTRUCTURE DECK EXCESS HEIGHT OF
COAMING. ✓

PLUGS AND COVERS SUPPLIED

Particulars of Air Pipes in exposed positions on freeboard, raised quarter, or superstructure decks :—

FORECASTLE DECK -	1-4" DIAM. AIR PIPE (SWAN-NECK)	HEIGHT OF OPENING	6" ABOVE DECK	
MAIN DECK	~ 1-4" " " "	(" ")	" " " 2" " "	
RAISED QR DECK	~ 1-4" " " "	(" ")	" " " 66" " "	
	- 1-3" " " "	(" ")	" " " 51" " "	
CASING TOP	- 2-3 1/2" " " "	(" ")	" " " 3" " "	CASING TOP
1-2" AIR PIPE ON HATCH TO AFT PEAK	(OPEN AT TOP)	" " "	5-9" "	R.Q. DECK

Particulars of Gangway Cargo and Coaling Ports:—

NONE FITTED

Particulars of Scuppers and Sanitary Discharge Pipes :—

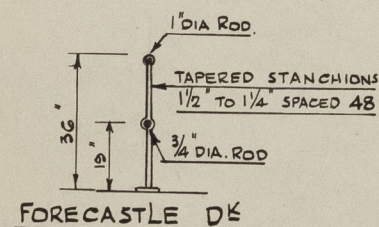
1-4 th	FROM	LAVATORY	STAR ^D	SIDE	FORD.	FITTED	WITH	STORM	VALVE.
1-4 th	"	"	"	"	"	AMIDSHIPS.	"	"	"
1-4 th	"	"	"	"	PORT	"	AFT.	"	"

Particulars of Side Scuttles:—

IN FORECASTLE - 3 EACH SIDE. 9" CLASS. NO DEADLIGHTS FITTED
" BRIDGE FRONT - 6 OFF. 9" " " " " " "
" " AFFEND - 2 " 9" " " " " " "
" P. 5. - 1 EACH SIDE. 9" " " " " " "
ALSO TO ACCOM^N ETC. IN CASING ON RAISED QR. DECK.

Vertical distance of Sill of lowest Side Scuttle above top of keel. NOT OBTAINABLE SHIP SURVEYED AFLOAT.

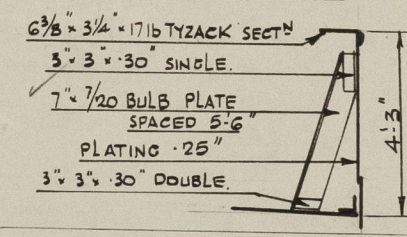
Particulars of Guard Rails :—



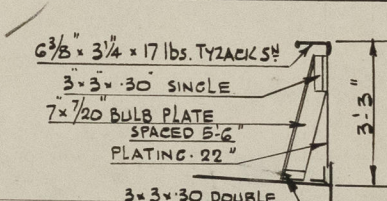
FORECASTLE DK

Particulars of Gangways, Lifelines, etc. :—

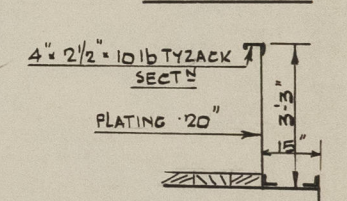
FORE DECK



RAISED QR. DECK.



BRIDGE D^k



NONE FITTED. MATERIAL (WIRE ROPES & SHACKLES ETC) ON BOARD FOR USE IF NECESSARY.

Particulars of Freeing Arrangements.

	Length of Bulwark	Height of Bulwark	Size of Freeing Ports	Number each side	Area each side	Rule area each side
After Well	<u>104.98</u>	<u>3'3"</u>	<u>3'0" x 1'6"</u>	<u>3</u>	<u>13.5</u> $\frac{1}{2}$	<u>21</u> $\frac{1}{2}$
Forward Well	<u>40'0"</u>	<u>4'3"</u>	<u>3'3" x 1'5"</u>	<u>2</u>	<u>10.79</u> $\frac{1}{2}$	<u>10.5</u> $\frac{1}{2}$

State position of each freeing port { After Well:— ABOUT 16'-0", 38'-0" - 70'-0" ABAFT BRIDGE LOWER EDGE 4" ABOVE DECK.
(F. and A. position and height above deck edge) { Forward Well:— ABOUT 25'-0" - 36'-0" ABAFT FOOLE. " " 9" " "

State whether the freeing ports are fitted with shutters, bars, or rails, and give particulars of such:— PINOTED STEEL WASHPORT DOORS.

Additional area where sheer is less than standard.

PARTICULARS OF PROTECTION TO OPENINGS, ETC.

HATCHWAYS ON FREEBOARD AND SUPERSTRUCTURE DECKS.			
Description of Hatchway
Dimensions of Hatchway
COAMINGS	Height above Deck
	Thickness
	Stiffeners
	Brackets, Stays
HATCH BEAMS	Number
	Spacing
	Scantling and Sketch
	Bearing Surface
FORE AND AFTERS	Number
	Spacing
	Unsupported Lengths
	Scantling and Sketch
HATCH COVERS	Material
	Thickness
	How fitted
	Bearing Surface
Spacing of Cleats
Number of Tarpaulins

HATCH TO FORE STORE.

HATCH TO AFT PEAK.

NO 1 HATCH.

NO 2 HATCH.
SIMILAR TO NO 1 EXCEPT HEIGHT WHICH IS 3'-0"

*Are wood fore and afters steel shod at all bearing surfaces? **FORE & AFTERS NOT FITTED.**

Are battens and wedges efficient and in good condition? **YES.**

Are tarpaulins in good condition and in accordance with rule requirements? **YES.**

Are lashings provided in accordance with rule requirements? **YES. RING BOLTS EACH SIDE.**

Particulars of any special features:—

EXISTING LOAD LINE CERTIFICATE ISSUED BY N.Z. GOVERNMENT DATED 1ST MAY 1942
 CENTRE OF DISC 4'-6 1/2" BELOW RAISED QUARTER DECK.
 ALLOWANCE FOR FRESH WATER 3"

Survey for Freeboard. The vessel, being clear of cargo, was specially examined throughout also placed on the Patent Slip. Outside plating, rudder, stern frame, keel and stem, all examined and with the exception of small repairs carried out, the vessel's condition was satisfactory for the assignment of freeboard.

Repairs.
 Several defective rivet points under No.1 tank in keel plate built up electric welding.
 Rudder, bottom pintle and nut renewed.
 24 Wooden hatch covers and 2 tarpaulins renewed. All steel battens renewed. Ventilator covers, plugs and covers made good as required.
 All parts of decks, superstructures and closing appliances now being in good condition.

Endorsement at first survey and at surveys for renewal of Certificate:—

The fittings and appliances are in accordance with the particulars shown on this form (or as now modified) and are in good condition.



© 2020

Lloyd's Register Foundation