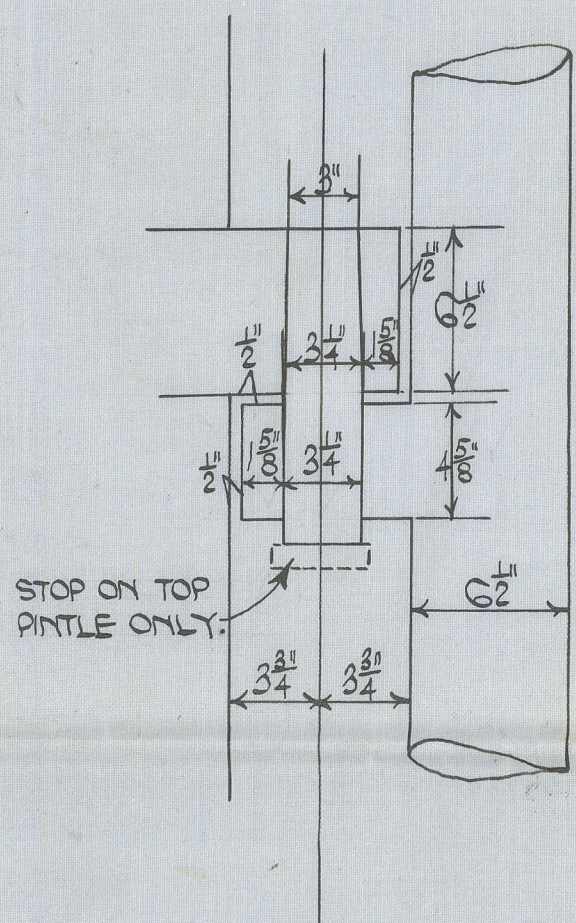


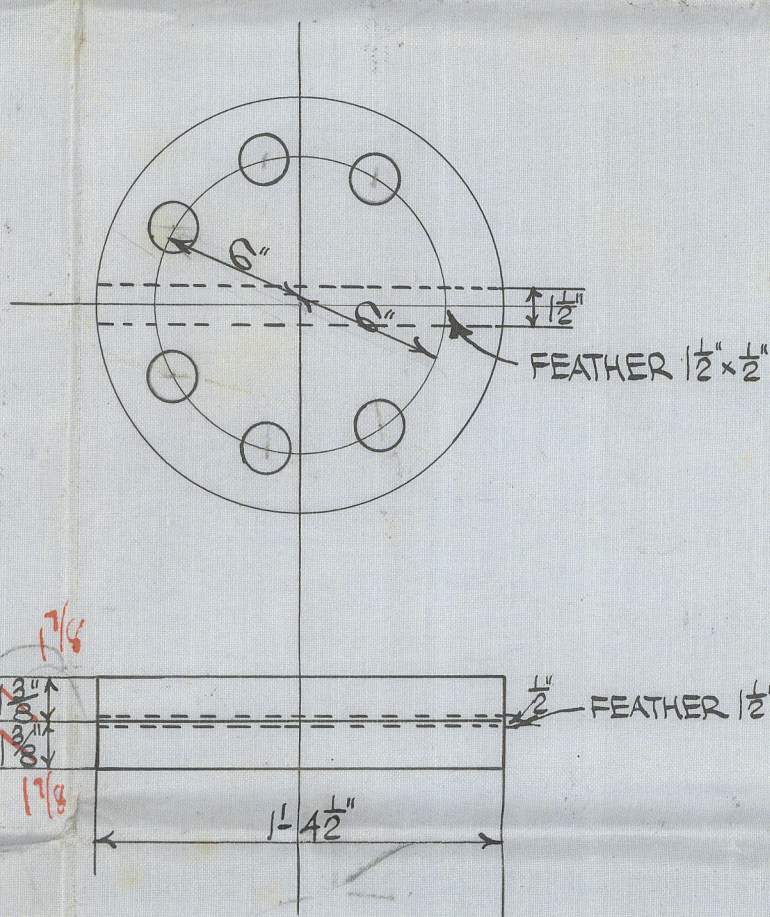
S. S. N^o 274. / 5. STERNPOST & RUDDER

SCALE 1"=ONE FOOT.

DETAIL OF PINTLE.
SCALE 1/2"=ONE FOOT.



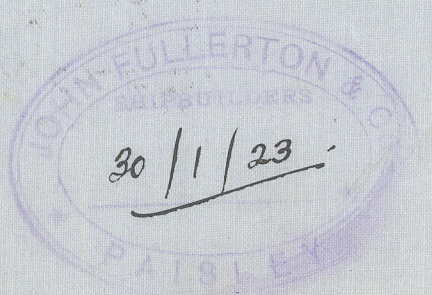
DETAIL OF COUPLING.
SCALE 1/2"=ONE FOOT.
G 'FITTED' BOLTS 1/8" DIA.



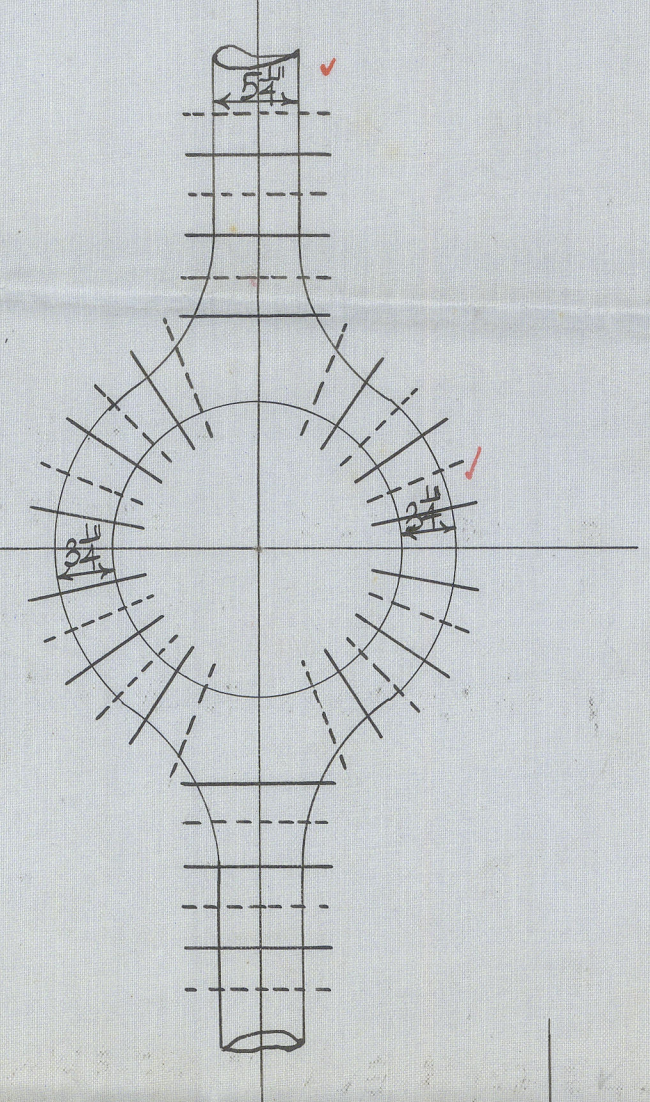
ALL TO BE BORED FOR RIVETS. RUDDER STOCK AND PINTLES TO BE TURNED. STERNPOST BOSS BORED AND FACED. SNUGS ON STERNPOST BORED FOR PINTLES. LIFTING TOP ON TOP PINTLE ONLY. ALL FINISHED COMPLETE TO LLOYD'S REQUIREMENTS.

HOLES IN STERNPOST BELOW COUNTER LINE.
1" DIA 5" PITCH.

HOLES IN STERNPOST ABOVE COUNTER LINE.
7/8" DIA 4 3/8" PITCH.



SECTION THRO' BOSS.
SHOWING CENTRES OF RIVETS.

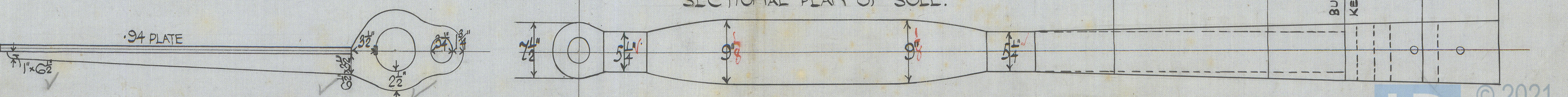


AREA = 68.52 SQ. FT.
D = 2.67 FT.
A x D = 183.
SPEED UNDER 10 KNOTS.

RIVET HOLES IN ARMS SPACED 4 1/2" DIAS. APART.
18 RIVETS.
STOCK INCREASED 10% IN WAY OF ARMS AND KEY FITTED AS PER RULE.

PLATE .94 THICK
SUPPLIED BY SHIPBUILDER.

SECTIONAL PLAN OF SOLE.



Stem post.
+ Rudder



Sainte Bernadette

"Loui Rose"

Glasgow Rpt. Co.

143820

J. Fullerton & Co.

274

"Fullerton Rose"

- No. 275 -

44620



© 2021

Lloyd's Register
Foundation

008641-008697-0162