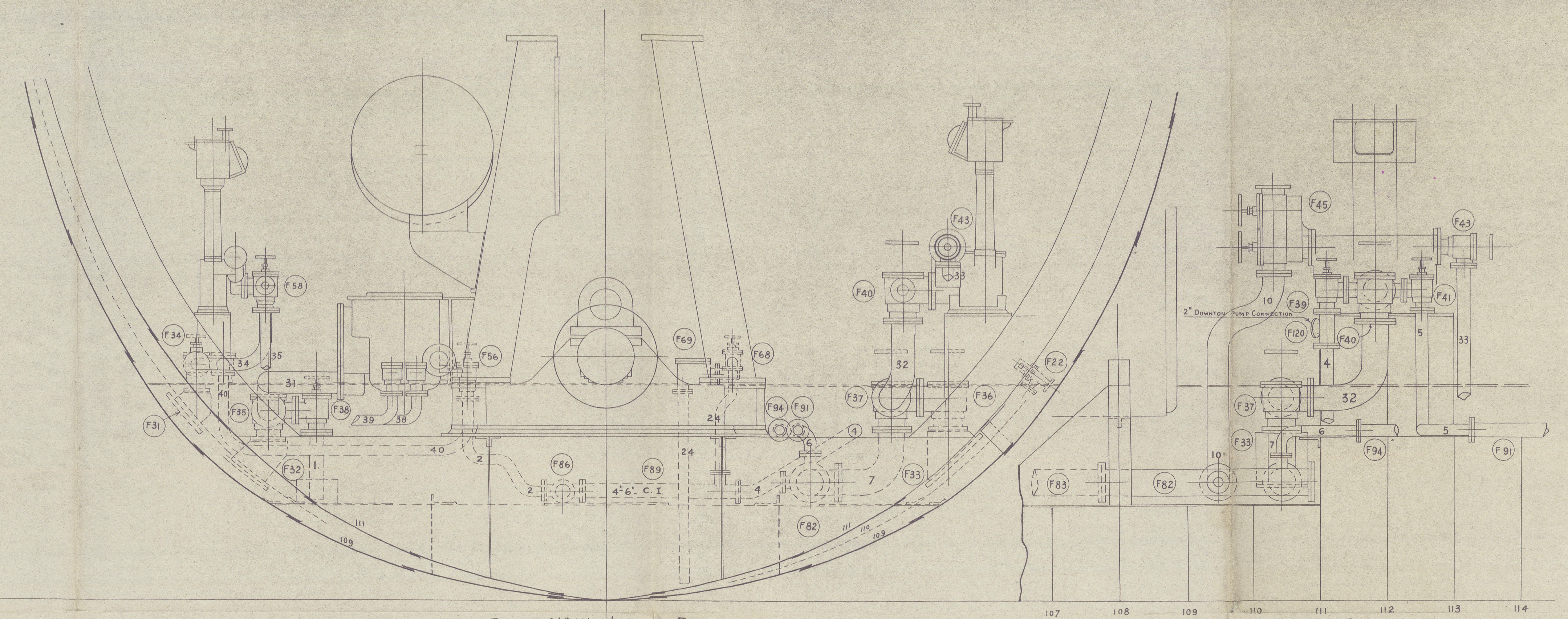
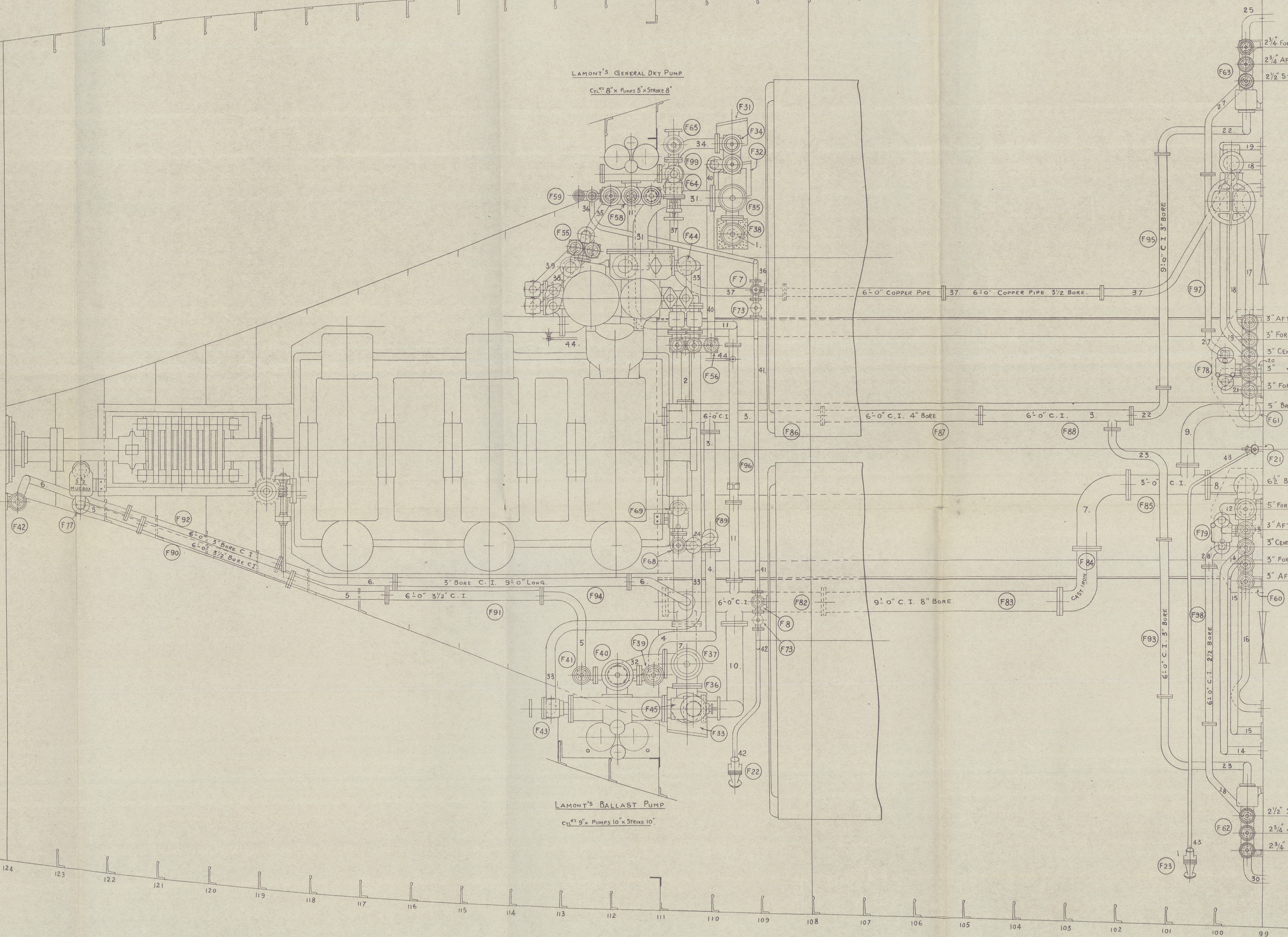
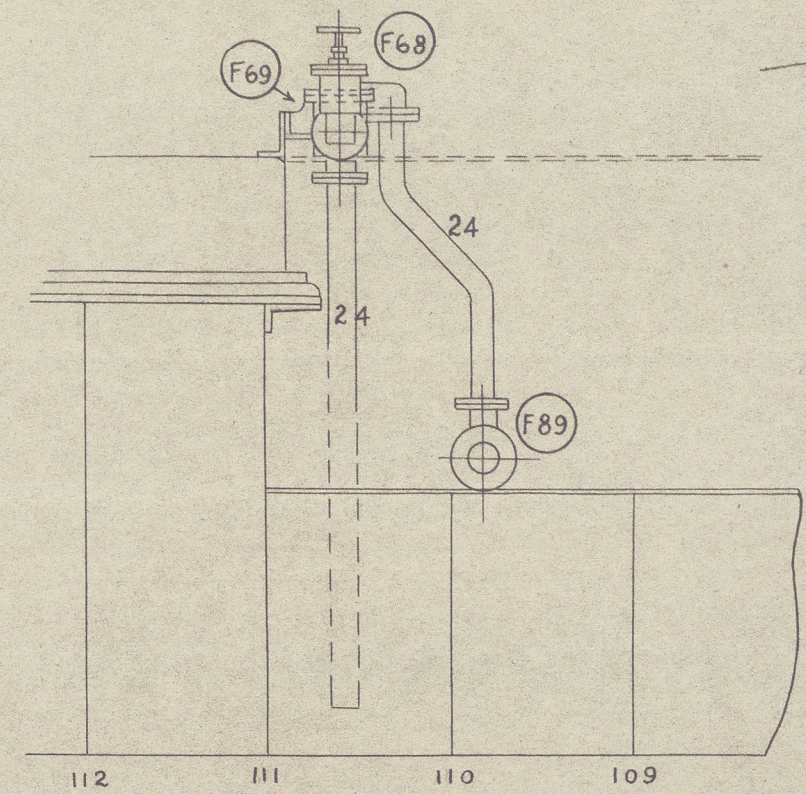
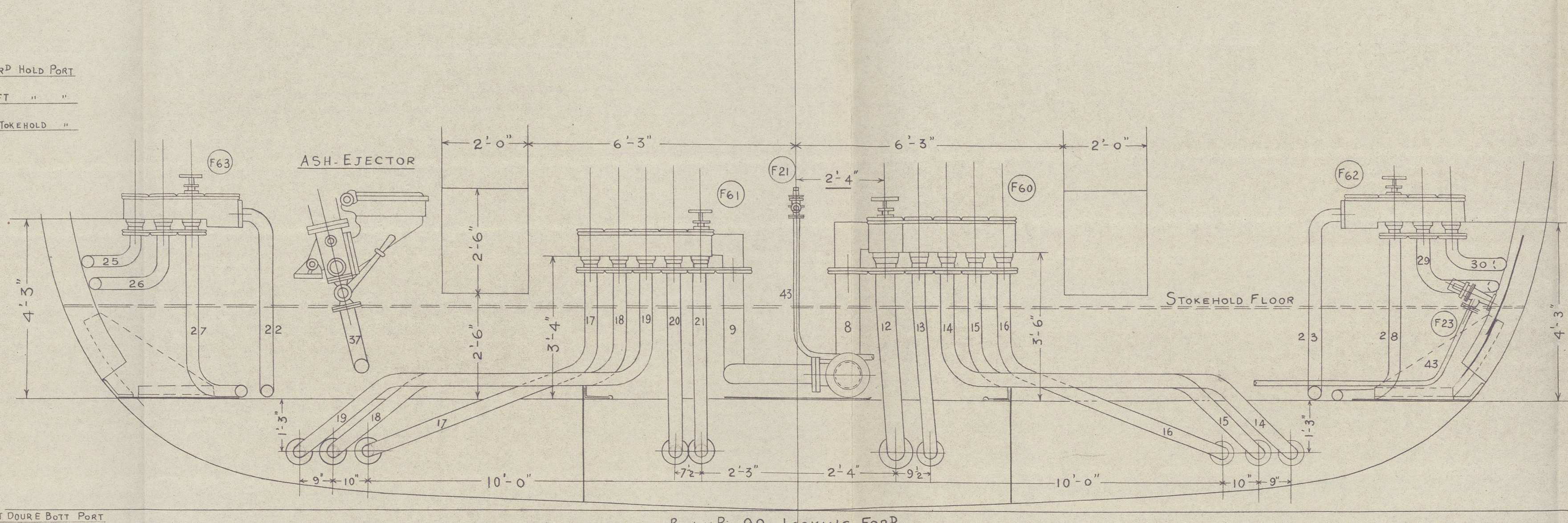


E.R. Centre Muxbox & Connections

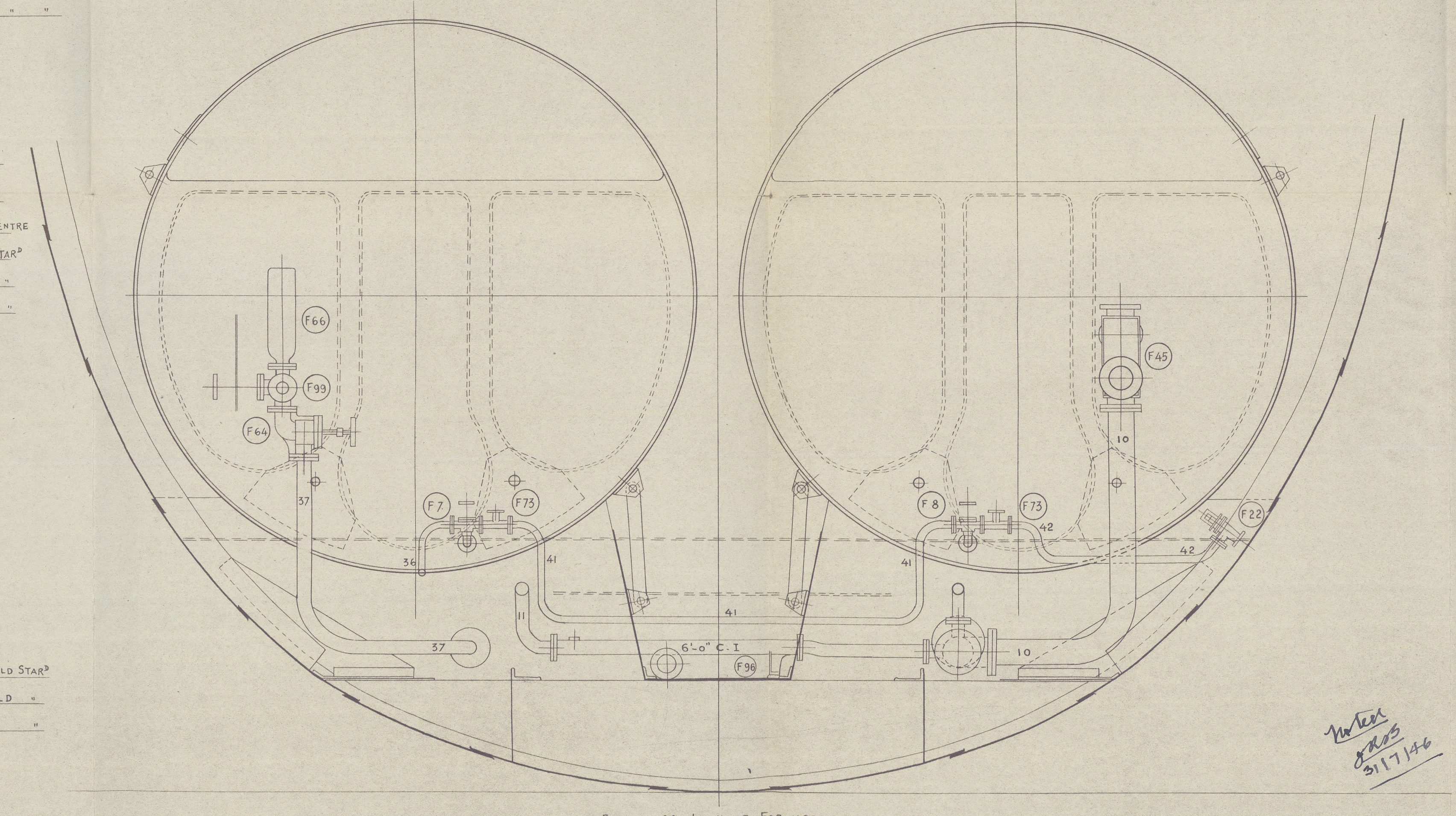


FRAME N° 111. LOOKING FORWARD

9" x 10" x 10" BALLAST PUMP & CONNECTIONS



BULK 99 LOOKING FORWARD



FRAME 109 LOOKING FORWARD

N°	NAME OF PIPE	BORE	MINIMUM	W.G.
1	BILGE INJECTION	4 1/2"	LEAD	
2	" PUMP SUCTION FROM BILGE MAIN	5"	"	
3	" MAIN	4"	"	
4	BALLAST PUMP SUCTION FROM BILGE MAIN	4"	LEAD	
5	" " " SPECIAL BILGE	3 1/2"	LEAD	
6	" " " AFT PEAK TANK	3"	"	
7	" " " TANKS	8"	"	
8	" " " STAR? TANK BOX	6 1/2"	LEAD	
9	" " " PORT	5"	"	
10	" " DISCHARGE TO TANKS	7"	"	
11	GENERAL DRY PUMP SUCTION FROM TANKS	3"	LEAD	
12	BALLAST SUCTION FROM FORE PEAK	5"	LEAD	
13	" " " AFT DOUBLE BOTTOM CENTRE	3"	"	
14	" " " CENTRE " " STAR?	3"	"	
15	" " " FORE " " "	3"	"	
16	" " " AFT " " "	3"	"	
17	" " " " " PORT	3"	"	
18	" " " FORE " " "	3"	"	
19	" " " CENTRE " " "	3"	"	
20	" " " " " CENTRE	3"	"	
21	" " " " " FORE	3"	"	
22	CONNECTION TO STOKERHOLD PORT MUXBOX	3"	LEAD	
23	" " " STAR?	3"	"	
24	BILGE SUCTION FROM E.R. CENTRE	2 1/2"	LEAD	
25	" " " FORE HOLD PORT	5"	"	
26	" " " AFT " " "	3"	"	
27	" " " STOKERHOLD " "	2 1/2"	LEAD	
28	" " " " " STAR?	2 1/2"	"	
29	" " " AFT HOLD " "	3"	LEAD	
30	" " " FORE " " "	3"	"	
31	MAIN INJECTION	6 1/2"	CONV. 12	
32	BALLAST PUMP SUCTION FROM SEA OR TANKS	8"	"	11
33	" " DISCHARGE TO COND?	4"	"	13
34	GENERAL DRY PUMP SUCTION FROM SEA	4"	"	13
35	" " " " " HOTWELL	2 1/2"	"	14
36	" " " " " BOILER	1 1/2"	"	15
37	" " DISCHARGE TO ASH EJECTOR	3 1/2"	"	7
38	INNER FEED PUMP SUCTION FROM HOTWELL	2 1/2"	"	14
39	OUTER " " " " "	2 1/2"	"	14
40	FORE BILGE " " " SEA	2 1/2"	"	14
41	BOTTOM BLOW OFF FROM PORT BOILER	1 1/2"	"	15
42	" " " " " COMMON TO SHIPS SIDE	1 1/2"	"	15
43	FIREMEN'S WATERSERVICE	1"	"	15
44	AUXILIARY FEED FROM TANKS	1 1/2"	"	

BILGE BALLAST & WATER PIPE ARRANGEMENT FOR ENGINES N° 1126

SCALE 1/2 INCH = ONE FOOT

J. FULLERTON & CO. S.S. N° 274

Machine P^{ale} et Quipians

S/S Sainte Bernadette.

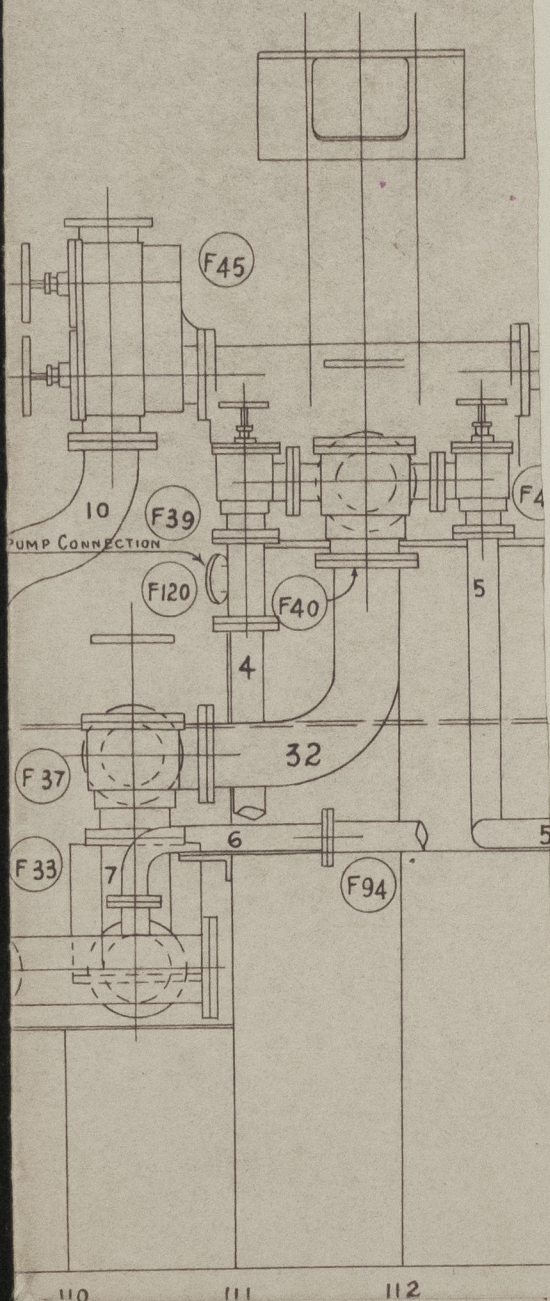
Alg rept No. 1641.



© 2021

Lloyd's Register
Foundation

008641-008647-0170



London City



© 2021

Lloyd's Register
Foundation