

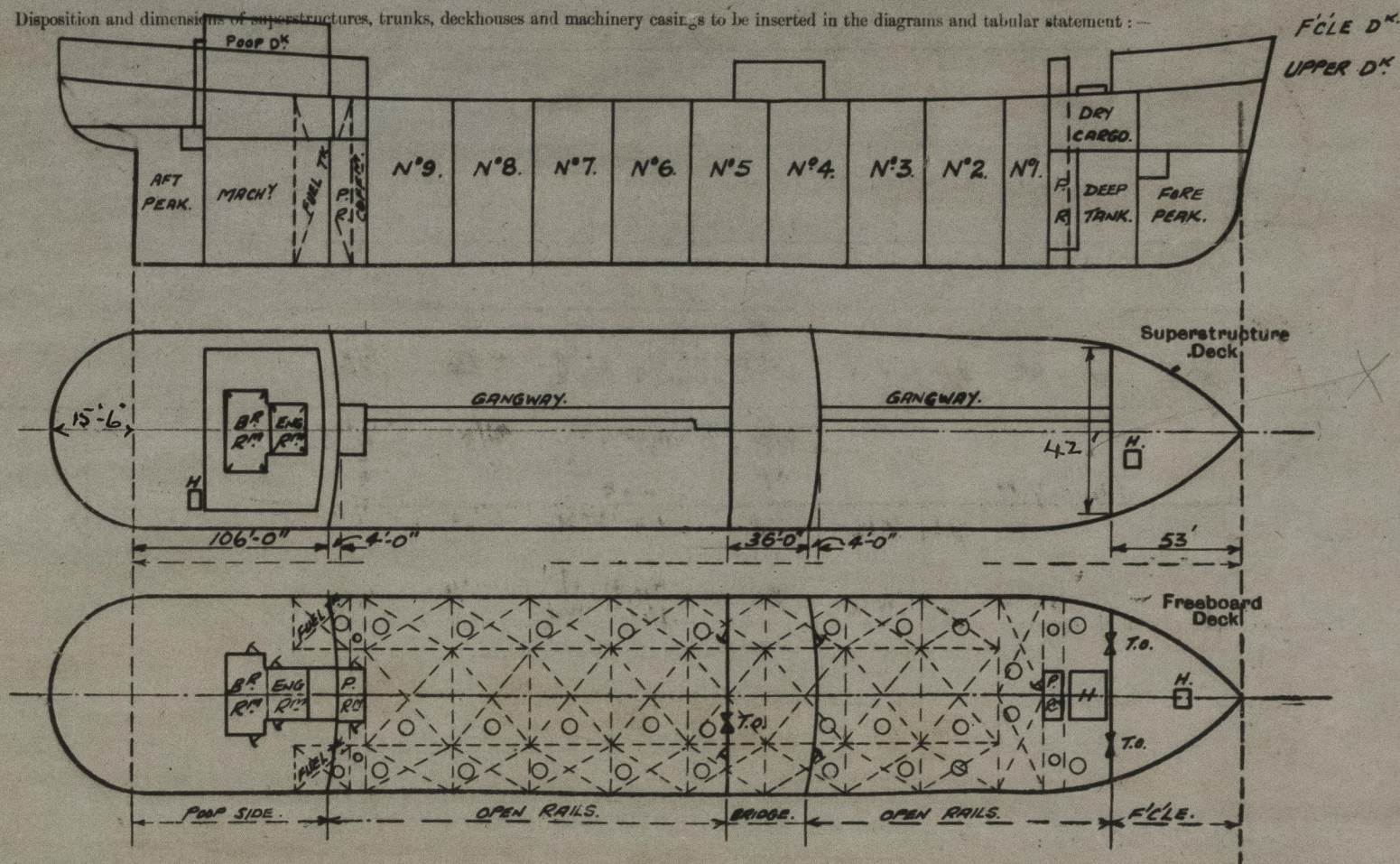
Lloyd's Register of Shipping.

SURVEYS FOR FREEBOARD.

(CONDITIONS OF ASSIGNMENT.)

Ship's Name "OILFIELD" & "Hovenweep" Port of Survey Swansea
 Official Number 169217 Surveyor's Signature W. Malcolm
 Nationality and Port of Registry British Newcastle-on-Tyne Date of Survey Oct 24/48; Nov 16/46; Dec 8th/1947.

Disposition and dimensions of superstructures, trunks, deckhouses and machinery casings to be inserted in the diagrams and tabular statement:—



Particulars of Superstructures, Trunks, Casings, Deckhouses.

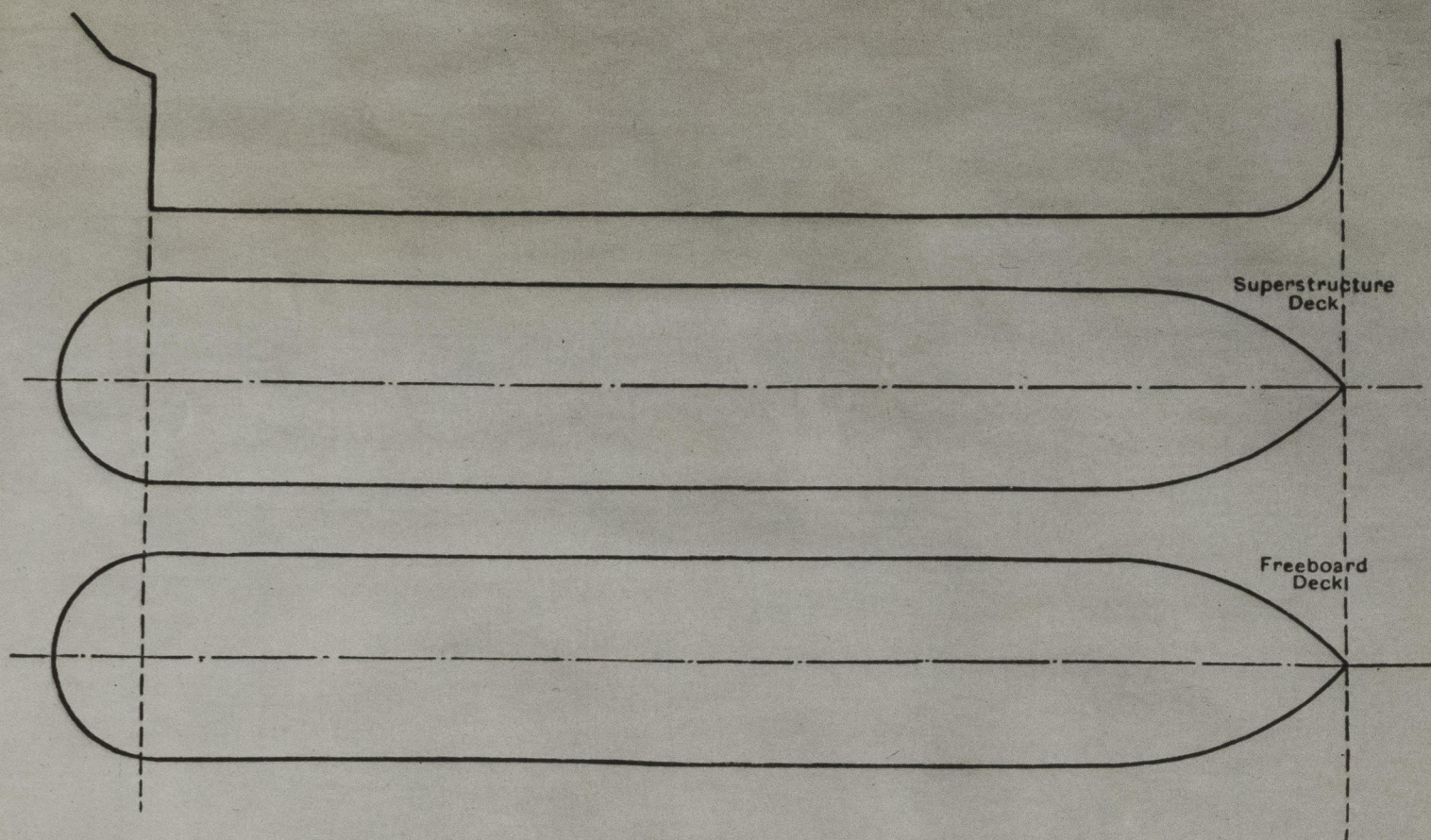
	Coaming	Plating	Stiffeners	Spacing	End Attachments of Stiffeners	Size of Openings	Height of Sills	Height of Casings
Poop Bulkhead ...	7/16	7/16	Flanged plate 9 x 4 x 7/16	30	SW. T. & B.	2, 60' x 48'	18"	8'-0"
Raised Quarter Deck Bulkhead ...								
Bridge, After Bulkhead ...	5/16	5/16	4 x 3 x 5/16	30	SW. T. & B.	2, 5'6" x 3'-0"	18"	8'-0"
Bridge, Forward Bulkhead ...	7/16	7/16	Flanged plate 9 x 4 x 7/16	30	"	2, 60' x 48'	18"	8'-0"
Forecastle Bulkhead ...	5/16	5/16	4 x 3 x 5/16	30	"	{ 1, 5'3" x 3'-0" 1, 5'8" x 4'-1"	18"	10'-0"
Trunk, Aft ...	None							
Trunk, Forward Pump Rm. Aft	7/16	7/16	Flanged plate 9 x 4 x 7/16	30	SW. T. & B.	60' x 26'	18"	8'-0"
Exposed Machinery Casings on Freeboard or Raised Quarter Deck ...	PR. 5/16	5/16	32 x 22 x 5/16	27"	"	"	18"	8'-0"
Exposed Machinery Casings on Superstructure Decks ...			none					
Machinery Casings within Superstructures not fitted with Class I Closing Appliances ...	None							
Deckhouses on Flush Deck Ships ...	None							

Particulars of Closing Appliances (state if capable of being manipulated from both sides).

Poop Bulkhead ...	Hinged steel W.T. Door (P.&S.) capable of being manipulated from both sides
Raised Quarter Deck Bulkhead ...	
Bridge, After Bulkhead ...	Hinged steel W.T. doors capable of being manipulated from both sides. Portable steel plates secured by hook bolts.
Bridge, Forward Bulkhead ...	Hinged steel W.T. doors capable of being manipulated from both sides.
Forecastle Bulkhead ...	Hinged steel W.T. doors capable of being manipulated from both sides.
Exposed Machinery Casings on Freeboard or Raised Quarter Deck ...	Portable steel plates secured by hook bolts.
Exposed Machinery Casings on Superstructure Decks ...	Pump Rooms - Hinged steel W.T. doors capable of being manipulated from both sides.
Machinery Casings within Superstructures not fitted with Class I Closing Appliances ...	No openings.
Deckhouses on Flush Deck Ships ...	No openings

PARTICULARS OF PROTECTION TO OPENINGS, ETC.

The following diagrams should be used to indicate the positions of cargo and coaling hatchways, gangway, cargo and coaling ports, ventilators, companionways, etc., which would affect the seaworthiness of the ship:—



Particulars of fiddle, funnel and ventilator coamings, engine room skylight and other openings in machinery casing tops and their means of closing:—

Fiddle openings fitted with gratings and hinged steel flaps.

E.R. & BR. ventilator and funnel coamings strongly constructed of steel.

E.R. & Pump Room skylights strongly constructed of steel.

Particulars of Flush Bunker Scuttles:— *one, on poop deck over counter, to rope store, of steel, substantially constructed, with bayonet joint and chain attachment.*

Particulars of Companionways:— Pump Rooms - Hinged steel W.T. doors, manipulated from both sides, openings 60" x 36" sill 18"
Poop Deckhouse - plating steel, openings in sides and ends 60" x 26", sills 14" with hinged steel W.T. doors manipulated from both sides.

Particulars of Ventilators in exposed positions on freeboard and superstructure decks:—

Forecastle Deck:— *Steel coamings 12" dia x 3/8" th. height 5'-0" (brackets) To 7' cl. Store: 10" " x 3/8" " 3'-0"*

Upper Deck:— *Steel 2 to hold, 18" dia x 7/16", stayed to fide post, height 12'-6" 2 to off P.R. 24" x 1/2", derrick post. 2 off P.R. 24" x 1/2", Ah. 15'-0" stayed*

Bridge Deck:— *Steel 2, to hold, 18" dia x 7/16", stayed to fide post, height 12'-6" 2, to hold, 18" dia x 7/16", stayed to fide post, height 12'-6"*

Poop Deck:— *2, to hold, 18" dia x 7/16", stayed to fide post, height 12'-6" 2, to hold, 18" dia x 7/16", stayed to fide post, height 12'-6"*

2 on fore P.R. top, 14" x 3/8" x 3'-0" high, hinged W.T. covers.

Particulars of Air Pipes in exposed positions on freeboard, raised quarter, or superstructure decks:—

Forecastle Deck:— *1, 4" dia. to F.P. tank 3'-6" high. 2, 2" " 1 P. 15. 3'-3"*

Upper Deck:— *2, 6" dia. 1 P. 15. to deep tank, 9'-0" high. stayed. 2, 3" " to fide. off. 3'-6" 2, 3" " aft. 3'-6" 2, 6" " " OF. Tanks 7'-0" stayed.*

Poop Deck:— *1, 4" " A.P. tank 2'-6" high.*

Efficient closing appliances provided for all air escape pipes.

Particulars of Gangway Cargo and Coaling Ports:—

None.

OILFIELD.

Particulars of Scuppers and Sanitary Discharge Pipes:—

Scuppers and sanitary discharges from Poop accommodation led overboard below the freeboard deck and fitted with substantially constructed storm valves at ship's side.

Scuppers and sanitary discharges from Midship accommodation led overboard above the freeboard deck and fitted with substantially constructed storm valves at ship's sides.

Particulars of Side Scuttles:—

Poop Tween Decks:— side scuttles of strong construction fitted with hinged deadlights permanently attached.

Vertical distance of Sill of lowest Side Scuttle above top of keel

Particulars of Guard Rails:—

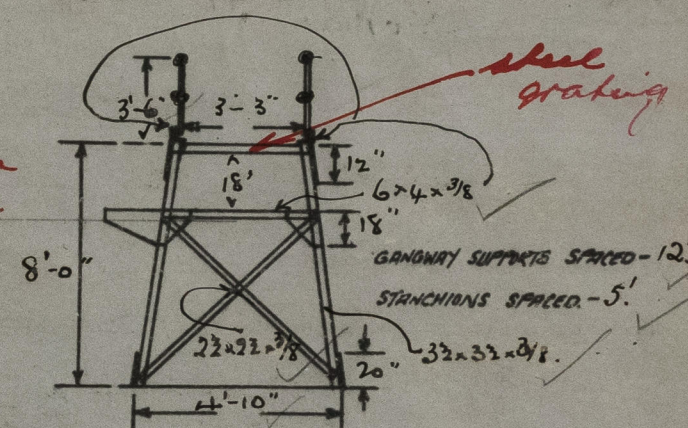
At sides of Upper, Forecastle & Poop Decks

Stanchions 3'-6" in height spaced 5'-0" apart and fitted with 2 rails

additional rail fitted to stanchions on upper deck between the lower rail & deck.

Particulars of Gangways, Lifelines, etc.:—

Fore and aft gangway fitted between the forecastle and bridge deck and bridge and poop deck. Supports spaced 12'-0" apart.



PARTICULARS OF FREING ARRANGEMENTS.

	Length of Bulwark	Height of Bulwark	Size of Freeing Ports	Number each side	Area each side	Rule area each side
After Well ...						
Forward Well ...						

State position of each freeing port ... (After Well:—

(P. and A. position and height above deck edge) (Forward Well:—

State whether the freeing ports are fitted with shutters, bars, or rails, and give particulars of such:—

Additional area where sheer is less than standard.



© 2021

Lloyd's Register Foundation

210 0145

PARTICULARS OF PROTECTION TO OPENINGS, ETC.

		HATCHWAYS ON FREEBOARD AND SUPERSTRUCTURE DECK						SUPERSTR. OTHER SMALL HATCHES	
		FREEBOARD DECK		SUPERSTR. DECK					
Description of Hatchway		TO STORE	TO CARGO HOLD	TO OIL TANKS	TO FORE & AFT.	TO DEEPTO C.F. TANK BUNKERS	TO STEWARD STORE	TO File to Magazine	
Dimensions of Hatchway		3'x3'	11'4"x15'-0"	4' dia.	25' dia.	95' dia.	2'-8" dia.	2'-9"x2'-9"	
COAMINGS	Height above Deck	30"	30"	30"	24"	24"	30"	24"	
	Thickness	1/2"	1/2"	1/2"	1/2"	1/2"	1/2"	1/2"	
	Stiffeners	✓	✓	✓	✓	✓	✓	✓	
	Brackets, Stays	✓	✓	✓	✓	✓	✓	✓	
HATCH BEAMS	Number	9x32x7/8							
	Spacing								
	Scantling and Sketch								
	Bearing Surface	NONE	NONE	NONE	NONE	NONE	NONE	NONE	
FORE AND AFTERS	Number		2 inter.						
	Spacing		plates						
	Unsupported Lengths		5' x 1/2"						
	Scantling* and Sketch	NONE	NONE	NONE	NONE	NONE	NONE	NONE	
	Bearing Surface		End to Corner.						
HATCH COVERS	Material	STEEL W.T.	STEEL W.T.	STEEL W.T.	STEEL W.T.	STEEL W.T.	STEEL W.T.	STEEL W.T.	
	Thickness	3/8"	5/8"	3/8"	3/8"	3/8"	3/8"	3/8"	
	How fitted	Hinged	Hinged	Hinged	Hinged	Hinged	Hinged	Hinged	
	Bearing Surface	W.T.	W.T.	W.T.	W.T.	W.T.	W.T.	W.T.	
Spacing of Cleats		6 hinged	7/8" hinged	8; 7/8"	5; 3/4"	5; 3/4"	6; 7/8"	5; 3/4"	
Number of Tarpaulins		7/8" bolts	bolts	bolts	bolts	bolts	bolts	bolts	
			22" spec.	bolts	bolts	bolts	bolts	bolts	

*Are wood fore and afters steel shod at all bearing surfaces? -

Are battens and wedges efficient and in good condition? -

Are tarpaulins in good condition and in accordance with rule requirements? -

Are lashings provided in accordance with rule requirements? -

Particulars of any special features:—

All cargo oil tank hatch covers fitted with ullage doors 10" diameter of strong construction secured by strongbacks.

Endorsement at first survey and at surveys for renewal of Certificate:—

The fittings and appliances are in accordance with the particulars shown on this form (or as now modified) and are in good condition.

Wm Malcolms
10/10/47.



© 2021

Lloyd's Register Foundation