

中央横断面图



T.S.M.V. 'KWANTO MARU'
YOKOHAMA DOCK YARD NO. 179.
MIDSHIP SECTION
OF AN
INTERMEDIATE VESSEL
BETW. TWO BASIC TYPES.
SCALE 1/2 TO 1/100

完成圖

PRINCIPAL DIMENSIONS.

LENGTH OVER ALL	479'-0"
LENGTH BET. P.P.	460'-0"
BREADTH MLD	61'-6"
DEPTH MLD TO UPPER DECK	39'-9"
LOADED DRAUGHT MLD	28'-0"
SHEER AT UPPER DECK	FORWARD 1/4" FT 3'-0"
TWEEN DECK H ¹ UPPER TO 2ND DECK	9'-2" @ 1/2" CENTER
" " " 2ND TO 3RD DECK	9'-0"
HEIGHT OF FOLE DECK	7'-9"
" " BRIDGE (BOTH SIDES OPEN)	7'-9"
" " BOAT	30'-0"
LENGTH OF FOLE DECK	85'-3"
LENGTH OF HOUSE ON UPPER DECK	79'-8"
" " " BRIDGE	42'-8"
" " " BOAT DECK	42'-8"

SCANTLING NUMERALS.

(INTERMEDIATE BETWEEN THE TWO BASIC TYPES)

D	39.75
L x D	460 x 39.75 = 18,285
L x (B+D)	460 x (61.5 + 39.75) = 46,575
L/D TO UPPER DECK	39.75 / 11.57 = 3.44
" " (FOR FRAMING) SEE TABLE OF MAINSIDE FRAMING BELOW.	
UNDER DECK TONNAGE COEFFICIENT	= .756

INTERPOLATION TO DRAUGHT.

BASIC TYPES	FOR FULL S.C.V. FOR COMB. SURV. FOR PROP. SHIP
LOAD DRAUGHT MLD	28'-11 1/2" 27'-0 1/2" 28'-0"
DIFF. LE	2'-11 1/2" 11 1/2"
RATIO	1/2 3/2

LIST OF EQUIPMENTS.

(RULE REQUIREMENT)

30-BOWER ANCHORS, STOCKLESS, (EACH)	77 CWT
1-STREAM ANCHOR, (EX. STOCK)	232 "
300 FATHOMS, 2 1/2" STUD CHAIN CABLES.	
120 " 4 1/2" STREAM STEEL WIRE (SPECIAL FLEXIBLE)	
130 " 5 1/2" FLEX STEEL WIRE (TOW LINE)	
4-100 " 8 MANILA ROPE (HAWSEYS & WARPS)	

* SEE OWNER'S REQUIREMENTS.

EQUIPMENT NUMBER.

L x (B+D)	460 x (61.5 + 39.75) = 46,575
FULE DECK	36.04 x 700 x 75 = 189
BRIDGE DECK	85.25 x 775 x 50 = 330
BRIDGE DECK HOUSE	79.75 x 775 x 50 = 309
BOAT DECK HOUSE	42.75 x 775 x 50 = 166
EQUIPMENT NUMBER	47,569

DECK PLATING & ANGLES.

(CONSIDERED AS TWO DECK VESSEL)

DECKS.	DECK OPENING	STRINGER PLATE FOR L & AT ENDS	DECK ABRIST OPENING	PLATE INSIDE OPENING	STRINGER ANGLES (FOR L & AT ENDS)	DECK SHEATHING
UPPER DECK	26'-0"	58' x 74"	41' x 44"	3/8"	160 x 150 x 22"	90 x 70 x 12 A SHEATHED FLEX WIRE BARS
2ND DECK.	26'-0"	51' x 48"	39' x 36"	3/8"	90 x 90 x 13"	90 x 90 x 12 A BARE.
3RD DECK (NON RULE).	26'-0"	51' x 34"	34' x 30"	3/8"	90 x 90 x 12"	"
BRIDGE DECK (OPEN)	33'-0"	60' x 30"	48' x 30"	3/8"	75 x 75 x 11 A	SHEATHED
FOLE DECK		36' x 38"	24' x 36"	3/8"	90 x 90 x 10 A	BARE
BOAT DECK		60' x 30"	24' x 36"	3/8"	75 x 75 x 10 A	SHEATHED

* SEE OWNER'S REQUIREMENTS.

TO CLASS TEISHINSHO'S 1ST CLASS
VESSEL & LLOYD'S 100A.1. WITH
FREEBOARD.

FORGING & CASTING.

STEM	ROLLED STEEL	10 1/2" x 2 1/2"
STERN FRAME	CAST STEEL AS PER PLAN.	
SHAFT BRACKETS	CAST STEEL AS PER PLAN.	
RUDDER	DOUBLE PLATED TYPE AS PER PLAN.	

SHELL PLATING.

ITEMS.	1/2 L	AT ENDS	END LAY	REMARKS.
PLATE PLATE KEEL	55' x 58' x 1/2"	70"	4R	80% MAINTAIN & THICK FOR AS PER RULE
BOTTOM PLATE (A) 1/2"	55' x 58' x 1/2"	70"	4R-3R	
SIDE PLATE (A) 1/2"	55' x 58' x 1/2"	70"	3R-3R	
UPPER DECK	55' x 58' x 1/2"	70"	4R-3R	
STRONG BEAM	55' x 58' x 1/2"	70"	4R-3R	
FOLE DECK	55' x 58' x 1/2"	70"	4R-3R	
PLATE PLATE ON SPECTACLE FR.	55' x 58' x 1/2"	70"	4R	

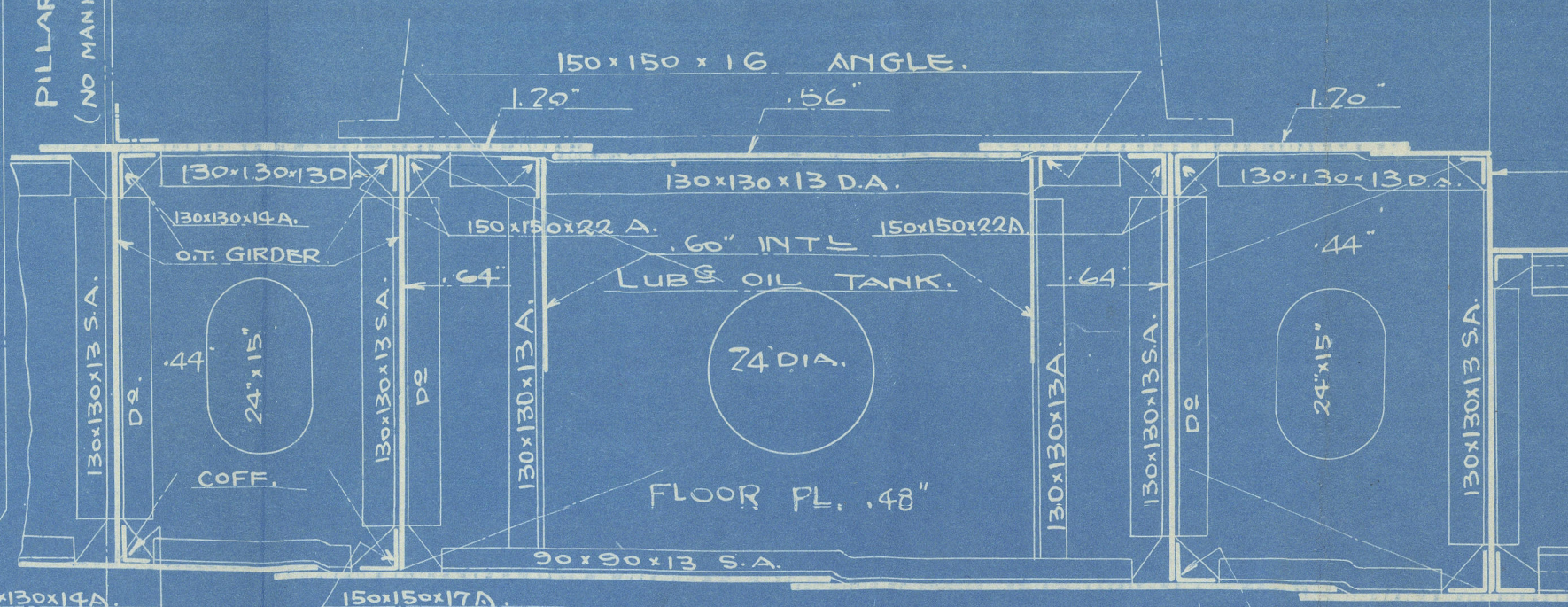
* FOR (A) & (B) STRIKES SEE OWNER'S REQUIREMENTS.

TANK SIDE CONNECTION.

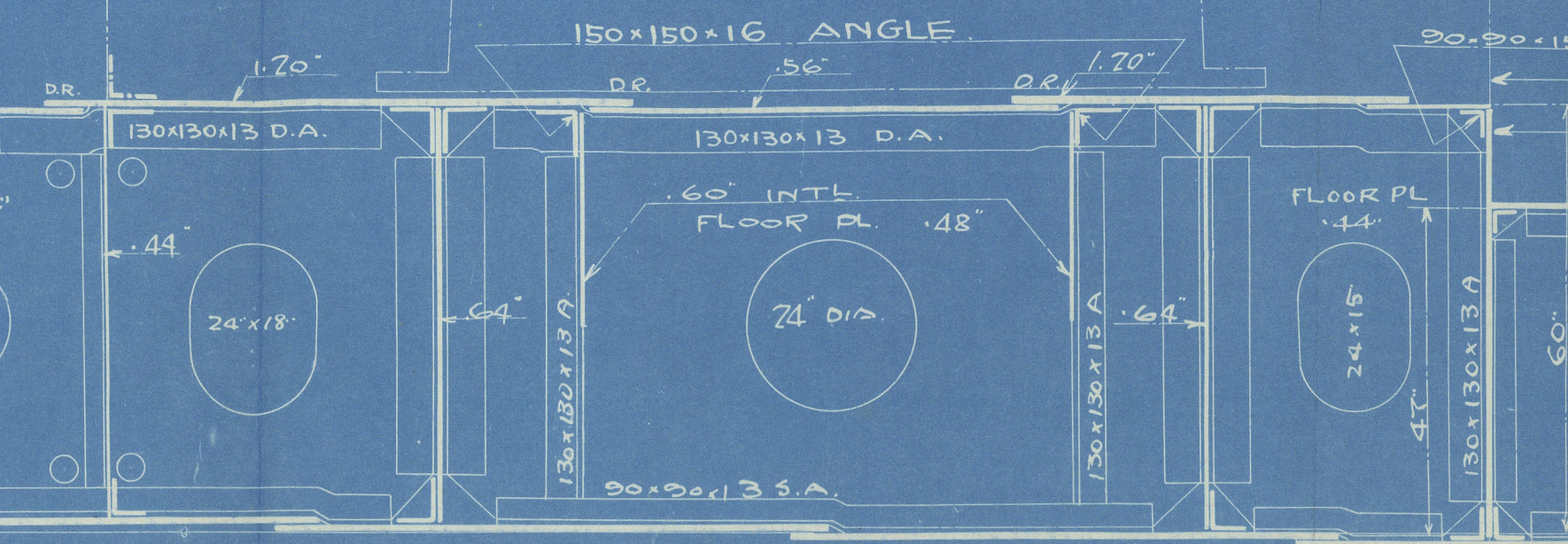
DESCRIPTION	DEEP OIL TANK FOR HOLS	MAIN ENG. SPACE	REMARKS.
2" FOR FRAMING	18'33"	18'33"	16'94"
1 1/2" SIDE BKT. PL.	50"	50"	50"
DEPTH OF M. PL.	48"	48"	48"
GUSSET PLATE	48"	48"	48"
MARGIN PL.	15'70" RIV.	15'70" RIV.	15'70" RIV.
OUTSIDE V. ANGLE	14'70" RIV.	14'70" RIV.	14'70" RIV.
INSIDE V. ANGLE	13'00" RIV.	13'00" RIV.	13'00" RIV.

* WHERE MARGIN PLATE IS HORIZONTAL, RIVET ATTACHMENT TO BE INCREASED AS SHOWN DUE TO OMISSION OF GUSSET CONNECTION IN WAY OF TUNNEL REC. & WING TANKS. SEE DETAILS.

SECTION UNDER MAIN ENGS. (AFT)



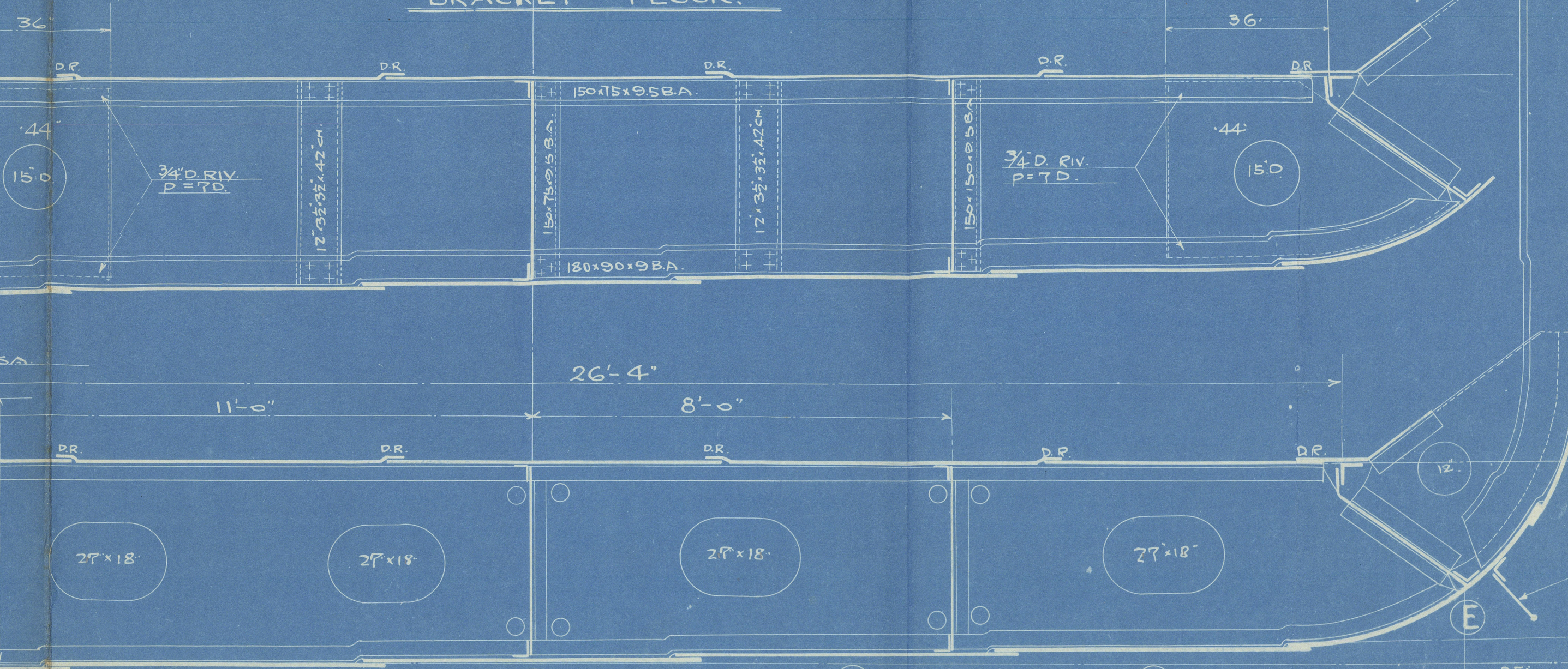
SECTION UNDER MAIN ENGS. (FOR P)



NOTES FOR DOUBLE BOTTOM.

- GIRDERS & FLOORS IN DOUBLE BOTTOM UNDER MAIN ENGINES AS SHOWN ON PLAN.
- ALL COMPARTMENTS IN DOUBLE BOTTOM TO BE INTENDED TO CARRY OIL, FUEL IN BULK OR WATER BALLAST.
- SOLID FLOORS TO BE FITTED ON EVERY FRAME IN ENG. SPACE & FOR FORWARD OF THE 3 1/2 L.B. & ALSO UNDER W.S. PILLARS & W.T. BOW, UNDER DEEP TANK, PARTIAL SOLID FLOORS UNDER THRUST SEATING & UNDER PILLARS, AND FLESHWAYS SOLID FLOORS FITTED ON EVERY THIRD FRAME.
- CLOSE CEILING 22" Q.P. ON 2 BATTENS ON TANK TOP IN CARGO HOLDS. DOUBLED UNDER HATCHWAYS.

BRACKET FLOOR.



DOUBLE BOTTOM.

DESCRIPTION	FOR L & AT ENDS	ENG. SP.	REMARKS.
PLATE	47' x 62"	48"	60' x 62"
UPPER DECK	20' x 10' x 11 B.A.	20' x 10' x 11 B.A.	20' x 10' x 11 B.A.
UPPER DECK	20' x 10' x 11 B.A.	20' x 10' x 11 B.A.	20' x 10' x 11 B.A.
UPPER DECK	20' x 10' x 11 B.A.	20' x 10' x 11 B.A.	20' x 10' x 11 B.A.
UPPER DECK	20' x 10' x 11 B.A.	20' x 10' x 11 B.A.	20' x 10' x 11 B.A.
UPPER DECK	20' x 10' x 11 B.A.	20' x 10' x 11 B.A.	20' x 10' x 11 B.A.
UPPER DECK	20' x 10' x 11 B.A.	20' x 10' x 11 B.A.	20' x 10' x 11 B.A.
UPPER DECK	20' x 10' x 11 B.A.	20' x 10' x 11 B.A.	20' x 10' x 11 B.A.
UPPER DECK	20' x 10' x 11 B.A.	20' x 10' x 11 B.A.	20' x 10' x 11 B.A.
UPPER DECK	20' x 10' x 11 B.A.	20' x 10' x 11 B.A.	20' x 10' x 11 B.A.

DOUBLE BOTTOM.

DESCRIPTION	FOR L & AT ENDS	ENG. SP.	REMARKS.
PLATE	47' x 62"	48"	60' x 62"
UPPER DECK	20' x 10' x 11 B.A.	20' x 10' x 11 B.A.	20' x 10' x 11 B.A.
UPPER DECK	20' x 10' x 11 B.A.	20' x 10' x 11 B.A.	20' x 10' x 11 B.A.
UPPER DECK	20' x 10' x 11 B.A.	20' x 10' x 11 B.A.	20' x 10' x 11 B.A.
UPPER DECK	20' x 10' x 11 B.A.	20' x 10' x 11 B.A.	20' x 10' x 11 B.A.
UPPER DECK	20' x 10' x 11 B.A.	20' x 10' x 11 B.A.	20' x 10' x 11 B.A.
UPPER DECK	20' x 10' x 11 B.A.	20' x 10' x 11 B.A.	20' x 10' x 11 B.A.
UPPER DECK	20' x 10' x 11 B.A.	20' x 10' x 11 B.A.	20' x 10' x 11 B.A.
UPPER DECK	20' x 10' x 11 B.A.	20' x 10' x 11 B.A.	20' x 10' x 11 B.A.
UPPER DECK	20' x 10' x 11 B.A.	20' x 10' x 11 B.A.	20' x 10' x 11 B.A.

DOUBLE BOTTOM.

DESCRIPTION	FOR L & AT ENDS	ENG. SP.	REMARKS.
PLATE	47' x 62"	48"	60' x 62"
UPPER DECK	20' x 10' x 11 B.A.	20' x 10' x 11 B.A.	20' x 10' x 11 B.A.
UPPER DECK	20' x 10' x 11 B.A.	20' x 10' x 11 B.A.	20' x 10' x 11 B.A.
UPPER DECK	20' x 10' x 11 B.A.	20' x 10' x 11 B.A.	20' x 10' x 11 B.A.
UPPER DECK	20' x 10' x 11 B.A.	20' x 10' x 11 B.A.	20' x 10' x 11 B.A.
UPPER DECK	20' x 10' x 11 B.A.	20' x 10' x 11 B.A.	20' x 10' x 11 B.A.
UPPER DECK	20' x 10' x 11 B.A.	20' x 10' x 11 B.A.	20' x 10' x 11 B.A.
UPPER DECK	20' x 10' x 11 B.A.	20' x 10' x 11 B.A.	20' x 10' x 11 B.A.
UPPER DECK	20' x 10' x 11 B.A.	20' x 10' x 11 B.A.	20' x 10' x 11 B.A.
UPPER DECK	20' x 10' x 11 B.A.	20' x 10' x 11 B.A.	20' x 10' x 11 B.A.

17'-0" 16'-0" 15'-0" 14'-0" 13'-0" 12'-0" 11'-0" 10'-0" 9'-0" 8'-0" 7'-0" 6'-0" 5'-0" 4'-0" 3'-0" 2'-0" 1'-0" 0'-0"

BASE LINE

TOP OF KEEL

DEPTH 35'-0" MLD

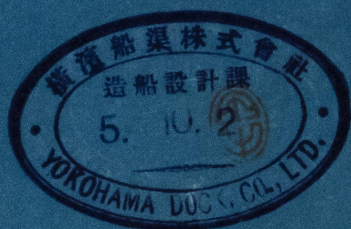
LOAD DRAUGHT 28'-0" MLD

中央横断面

一七九

關東丸

縮尺三分之四



5. 9. 27. A.K.

T. S. M. V. "KWANTO MARU"
YOKOHAMA DOCK YARD NO. 179.

MIDSHIP SECTION.

OF AN

INTERMEDIATE VESSEL
BETW. TWO BASIC TYPES.

SCALE $\frac{1}{2}$ TO 1 FT.

船設
七九〇協第一五號

"Kanto Maru" Yen. 4588

ex KWAY TO MARU



© 2021

Lloyd's Register
Foundation