

25 JUN 1953

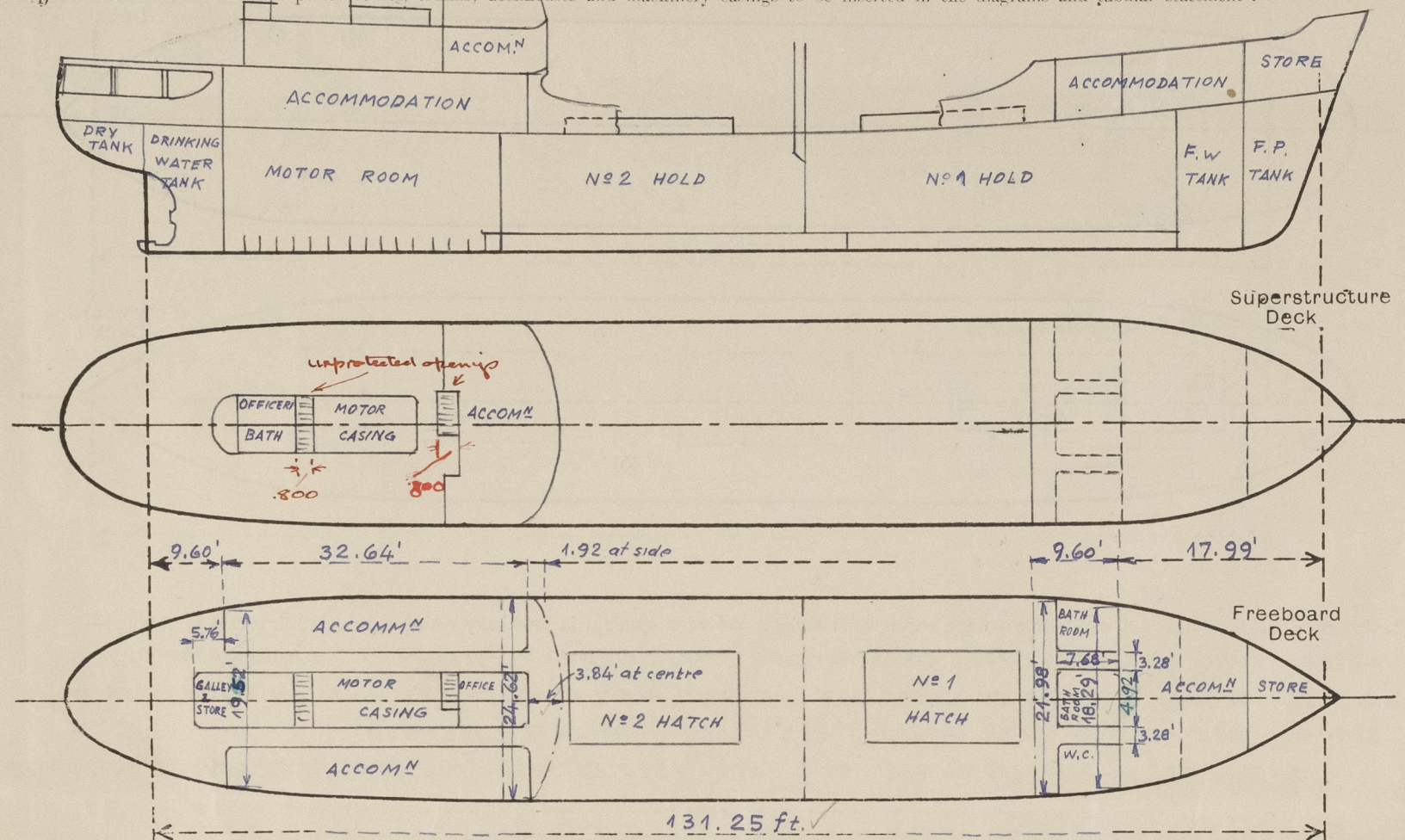
# Lloyd's Register of Shipping.

## SURVEYS FOR FREEBOARD.

### (CONDITIONS OF ASSIGNMENT.)

Ship's Name "INSUMAR" Port of Survey TRIESTE  
 Official Number ✓ Surveyor's Signature Alex M. Hopkins  
 Nationality and Port of Registry INDONESIAN — DJAKARTA Date of Survey DURING CONSTRUCTIONS

Disposition and dimensions of superstructures, trunks, deckhouses and machinery casings to be inserted in the diagrams and tabular statement:—



Particulars of Superstructures, Trunks, Casings, Deckhouses.

	Coaming	Plating	Stiffeners	Spacing	End Attachments of Stiffeners	Size of Openings	Height of Sills	Height of Casings
Poop Bulkhead ... ..	6 <sup>m</sup> / <sub>m</sub> ✓	5 <sup>m</sup> / <sub>m</sub> ✓	50 x 4 <sup>m</sup> / <sub>m</sub> flats ✓	650 <sup>m</sup> / <sub>m</sub> ✓	WELDED TOP & BOTTOM ✓	✓	✓	2100 <sup>m</sup> / <sub>m</sub> ✓
Raised Quarter Deck Bulkhead ...			✓					
Bridge, After Bulkhead ... ..			✓					
Bridge, Forward Bulkhead ... ..			✓					
Forecastle Bulkhead (WITH RECESSES)	5 <sup>m</sup> / <sub>m</sub> ✓	4.5 <sup>m</sup> / <sub>m</sub> ✓	50 x 4 <sup>m</sup> / <sub>m</sub> flats ✓	500 <sup>m</sup> / <sub>m</sub> ✓	WELDED TOP & BOTTOM ✓	2 @ 600 x 1900 2 @ 650 x 1900 ✓	320 <sup>m</sup> / <sub>m</sub> ✓	2100 <sup>m</sup> / <sub>m</sub> ✓
Trunk, Aft ... ..			✓					
Trunk, Forward ... ..			✓					
Exposed Machinery Casings on Freeboard or Raised Quarter Decks ...	5 <sup>m</sup> / <sub>m</sub> ✓	5 <sup>m</sup> / <sub>m</sub> ✓	70 x 5.5 <sup>m</sup> / <sub>m</sub> flats ✓	585 <sup>m</sup> / <sub>m</sub> ✓	WELDED TOP & BOTTOM ✓	2 @ 700 x 1300 ✓	610 <sup>m</sup> / <sub>m</sub> ✓	2100 <sup>m</sup> / <sub>m</sub> ✓
Exposed Machinery Casings on Superstructure Decks ... ..	5 <sup>m</sup> / <sub>m</sub> ✓	4 <sup>m</sup> / <sub>m</sub> ✓	50 x 5 <sup>m</sup> / <sub>m</sub> flats ✓	585 <sup>m</sup> / <sub>m</sub> ✓	WELDED TOP & BOTTOM ✓	✓	✓	2100 <sup>m</sup> / <sub>m</sub> ✓
Machinery Casings within Superstructures not fitted with Class I Closing Appliances ... ..			NONE					
Deckhouses on Flush Deck Ships ...			NONE					

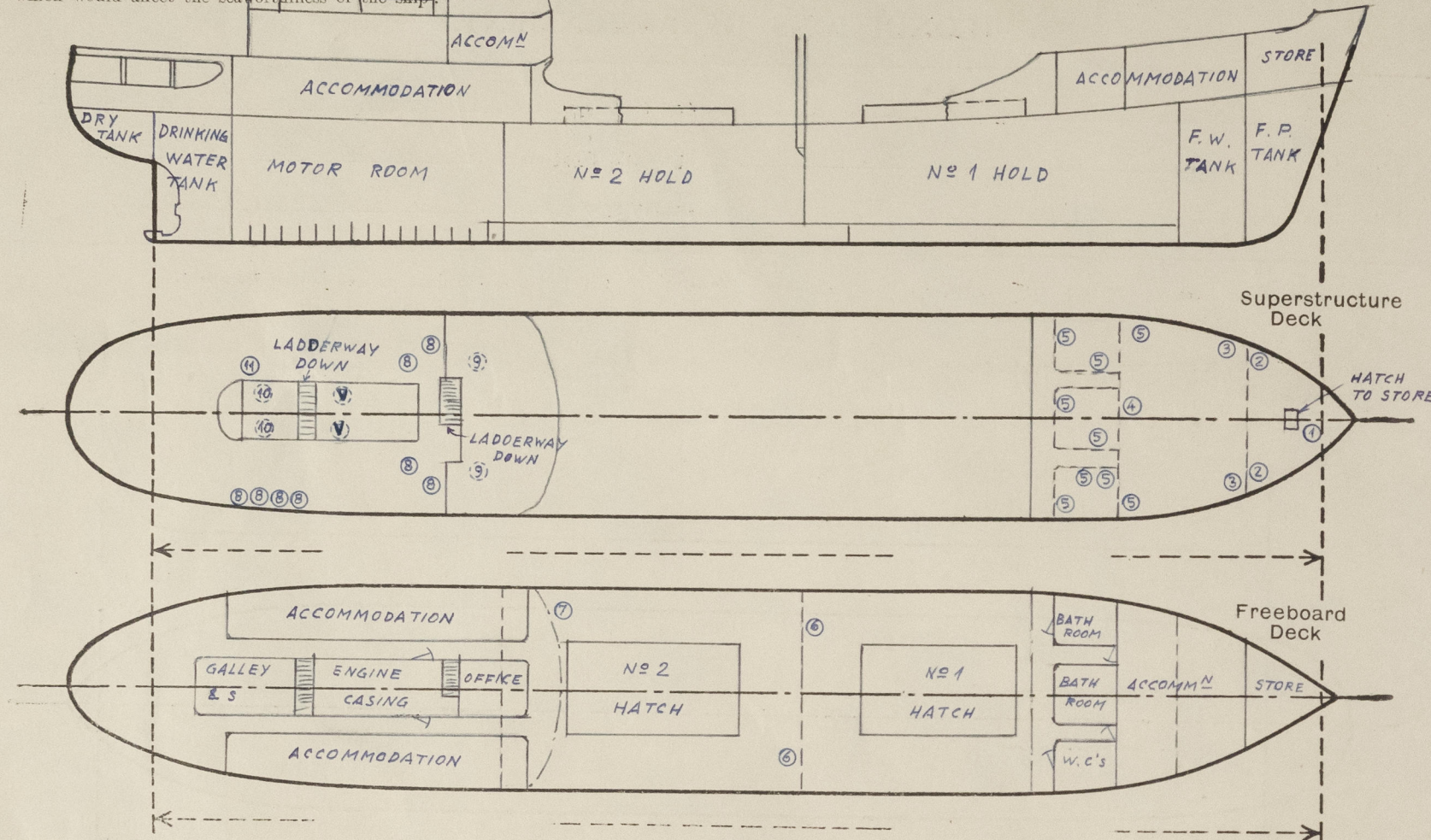
Particulars of Closing Appliances (state if capable of being manipulated from both sides).

Poop Bulkhead ... ..	OPEN POOP ✓
Raised Quarter Deck Bulkhead ...	✓
Bridge, After Bulkhead ... ..	✓
Bridge, Forward Bulkhead ... ..	✓
Forecastle Bulkhead ... ..	WOOD DOORS CAPABLE OF BEING OPERATED FROM BOTH SIDES. ✓
Exposed Machinery Casings on Freeboard or Raised Quarter Decks ...	STEEL HINGED DOORS CAPABLE OF BEING OPERATED FROM BOTH SIDES. ✓
Exposed Machinery Casings on Superstructure Decks ... ..	✓
Machinery Casings within Superstructures not fitted with Class I Closing Appliances ... ..	✓
Deckhouses on Flush Deck Ships ...	✓



## PARTICULARS OF PROTECTION TO OPENINGS, ETC.

The following diagrams should be used to indicate the positions of cargo and coaling hatchways, gangway, cargo and coaling ports, ventilators, companionways, etc., which would affect the seaworthiness of the ship.



Particulars of filley, funnel and ventilator coamings, engine room skylight and other openings in machinery casing tops and their means of closing :—  
 MOTOR CASING OF STRONG STEEL CONSTRUCTION, EFFICIENTLY STIFFENED 2100 mm ABOVE POOP DECK  
 FUNNEL STEPPED DIRECTLY ON CASING TOP. ENGINE ROOM & GALLEY SKYLIGHTS ON CASING TOP OF STRONG CONSTRUCTION WITH HINGED STEEL FLAPS EFFICIENTLY SECURED  
 VENTILATORS — 2 @ 500 mm DIA x 5 mm THICK x 1350 ABOVE CASING TOP, EFFICIENTLY SUPPORTED.

Particulars of Flush Bunker Scuttles :—

NONE

Particulars of Companionways :—

NONE

Particulars of Ventilators in exposed positions on freeboard and superstructure decks :—

DIST. NUMBER	Nº	M/M DIA	M/M THK.	M/M HGT	POSITION	LEADING TO
1	1	200	7.5	965	F'CLE DECK	BOS'UNS STORE
2	2	200	G.N.	460	" "	" "
3	2	200	7.5	965	" "	CREWS ACCOMM
4	1	300	8.5	965	" "	HOLD Nº 1
5	9	200	5.0	300	M.V. " "	CREWS ACC, W.C'S ETC.
6	2	300	8.5	965	MAIN DECK	HOLDS Nº 1 & 2
7	1	300	8.5	965	" "	HOLD Nº 2
8	8	200	5.0	300	M.V. POOP DECK	ACCOMMODATION
9	2	200	5.0	300	M.V. BRIDGE DECK	"
10	2	200	5.0	300	M.V. CASING TOP	OFFICER'S BATH
11	1	200	G.N.	460	POOP DECK	GALLEY

VENTILATORS EFFICIENTLY SUPPORTED AS REQUIRED COWL VENTILATORS SUPPLIED WITH WOOD PLUGS AND CANVAS COVERS.  
 G.N. VENTS SUPPLIED WITH HINGED STEEL W.T. COVERS.

Particulars of Air Pipes in exposed positions on freeboard, raised quarter, or superstructure decks :—

Nº	POSITION	M/M SIZE	LEADING TO
1	FORECASTLE DECK	73 x 83	FORE PEAK TANK
2	" "	60 x 70	F.W. TANK
2	" "	60 x 70	Nº 1 D.B. TANK
2	MAIN DECK	73 x 83	Nº 2 D.B. TANK
2	" "	47 x 57	COFFERDAM
2	" "	73 x 83	Nº 3 D.B. TANK
2	" "	73 x 83	Nº 4 D.B. TANK
2	POOP DECK	60 x 70	DRINKING WATER TANK
1	MAIN DECK	47 x 57	RUDDER TRUNK
1	" "	47 x 57	DRY TANK AFT.

AIR PIPES TO OIL TANKS FITTED WITH PERFORATED PLATES AND HINGED COVERS. REMAINDER OF AIR PIPES FITTED WITH HINGED COVERS  
 ALL HINGED COVERS SECURED BY SPRING CLIPS  
 AIR PIPES 915 mm HIGH ON MAIN DECK AND 460 mm HIGH ON POOP AND FORECASTLE DECKS.

Particulars of Gangway Cargo and Coaling Ports :—

NONE

Particulars of Scuppers and Sanitary Discharge Pipes :—

SCUPPERS FROM POOP & FORECASTLE DECKS DRAIN ON FREEBOARD DECK. FREEBOARD DECK SUPPERS 64 mm DIA, 5 IN Nº (P & S) DRAIN DIRECTLY OVERBOARD. / AT LOWER ENDS.  
 SUPPERS FROM CREW'S QUARTERS DISCHARGE TO MOTOR ROOM BILGE WITH SELF CLOSING COCKS.  
 ALL SANITARY DISCHARGES ARE FROM SPACES ABOVE FREEBOARD DECK AND DISCHARGE TO A COLLECTOR PIPE WITH NON-RETURN VALVE AT SHIPS SIDE ABOVE L.W.L.

Particulars of Side Scuttles :—

SIDE SCUTTLES FITTED ON SHELL IN WAY OF FORECASTLE AND POOP OF BRASS STRONGLY CONSTRUCTED AND FITTED WITH HINGED DEADLIGHTS.

Vertical distance of Sill of lowest Side Scuttle above top of keel 4.5 METRES

Particulars of Guard Rails :—

GUARD RAILS ON FORECASTLE DECK 1000 mm HIGH, 4 RAILS STANCHIONS SPACED 1500 mm APART.

Particulars of Gangways, Lifelines, etc. :—

LIFELINES PROVIDED (P AND S) FROM FORECASTLE TO POOP.

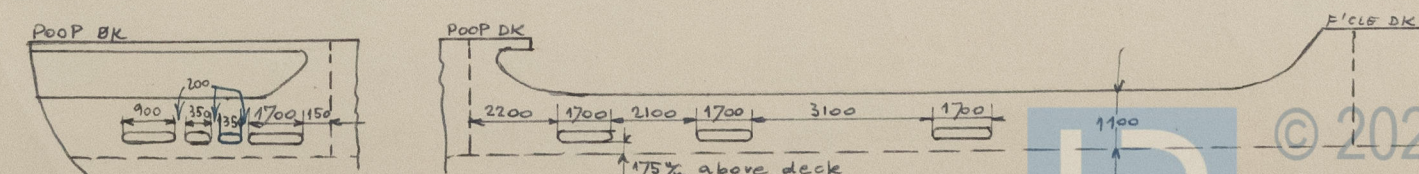
### Particulars of Freeing Arrangements.

	Length of Bulwark	Height of Bulwark	Size of Freeing Ports	Number each side	Area each side	Rule area each side
After Well ...	5.90 m.	1100 mm	1 @ 1700 x 250 mm 1 @ 200 x 250 mm 2 @ 350 x 250 mm	FOUR	.792 m <sup>2</sup>	.783 m <sup>2</sup>
Forward Well ...	18.72 m. 19.805	1100 mm	1700 mm x 250 mm	THREE	1236 m <sup>2</sup>	1.192 m <sup>2</sup>

State position of each freeing port ... { After Well :— }  
 (P. and A. position and height above deck edge) { Forward Well :— } SEE SKETCH

State whether the freeing ports are fitted with shutters, bars, or rails, and give particulars of such :— VERTICAL BARS 3 IN Nº, SPACED 125 mm APART.

Additional area where sheer is less than standard.

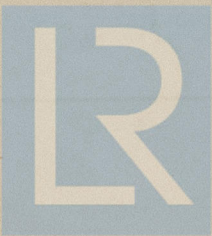




PARTICULARS OF PROTECTION TO OPENINGS, ETC.

		HATCHWAYS ON FREEBOARD AND SUPERSTRUCTURE DECKS.													
		← MAIN DECK →		F/CLE DECK											
Description of Hatchway ...		Nº 1	Nº 2	HATH TO STORE											
Dimensions of Hatchway ...		CARGO	CARGO	585x800											
COAMINGS	Height above Deck ...	900 mm	10 mm	610 mm											
	Thickness { Sides ...	10 mm	10 mm	7 mm											
	{ Ends ...	10 mm	10 mm	7 mm											
	Stiffeners ...	180x60 flanged plate	✓	✓											
Brackets, Stays ...		180x9 bulb plate	✓	✓											
HATCH BEAMS	Number ...	3	1460 mm	✓											
	Spacing ...	60x8	270x8	✓											
	Scantling and Sketch ...	150x9	80 mm	✓											
	Bearing Surface ...	80 mm	80 mm	✓											
FORE AND AFTERS	Number ...			✓											
	Spacing ...			✓											
	Unsupported Lengths ...			✓											
	Scantling* and Sketch ...	← NONE →	← NONE →	✓											
Bearing Surface ...				✓											
HATCH COVERS	Material ...	YANGWOOD	65 mm	HINGED STEEL											
	Thickness ...	65 mm	65 mm	W.T. COVER											
	How fitted ...	F. & A.	65 mm	RUBBER											
	Bearing Surface ...	65 mm	65 mm	PACKING											
Spacing of Cleats ...		610 mm	2	SECURED											
Number of Tarpaulins...		2	2	WITH TOGGLES											
*Are wood fore and afters steel shod at all bearing surfaces? ✓															
Are battens and wedges efficient and in good condition? YES															
Are tarpaulins in good condition and in accordance with rule requirements? YES															
Are lashings provided in accordance with rule requirements? YES															

Particulars of any special features :—



© 2021

Lloyd's Register  
Foundation