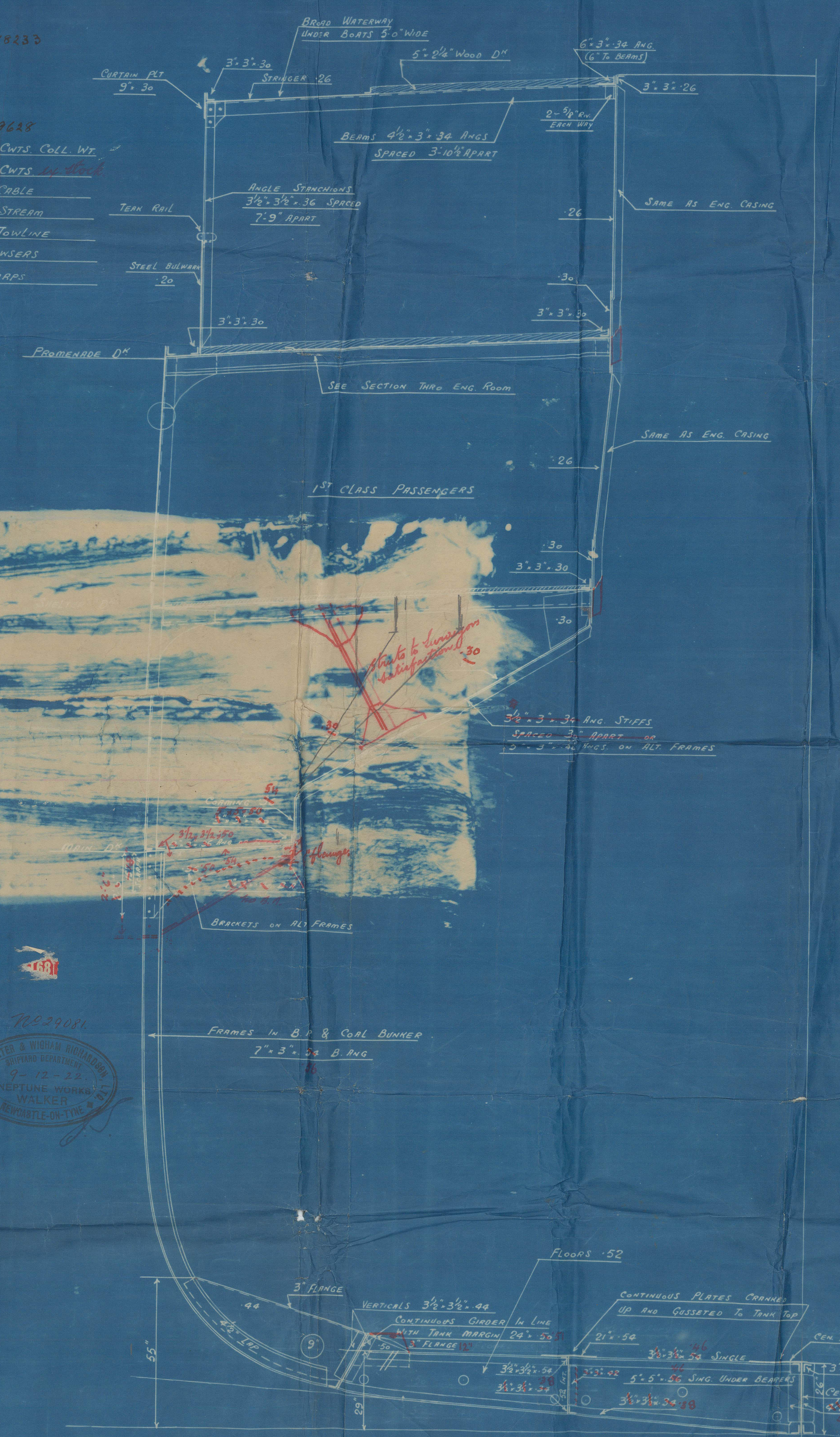
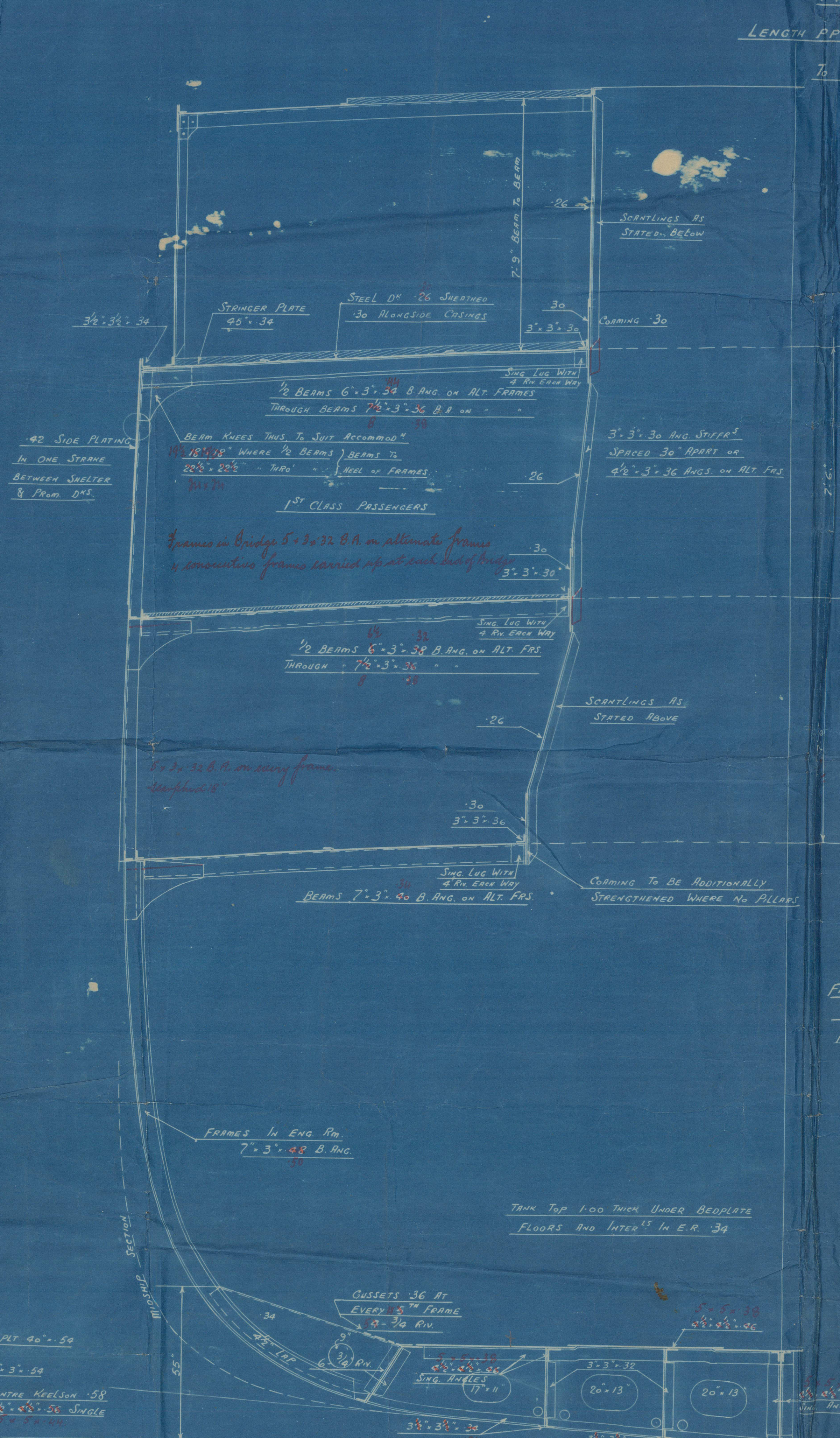


15-12-22

EQUIPMENT NO.
L. (B+D) = 15122 18233
BRIDGE 629
HOUSE ART 138
HOUSES & CHIMNEY 488
EQUIPMENT NO. = 15122 18233
3 BOWEN HUGHES STOCKLESS 110 CWTs COLL. WT.
1 STEAM HULLER 10 CWTs COLL. WT.
240 FMS OF 1 1/2" STUP CHAIN CABLE
75 - 4 1/2" STEEL WIRE STEAM
90 - 4" " " TAILLINE
2 - 90 FMS - 2 1/2" " " HANDERS
2 - 90 - 2 1/4" " " WIRKS



SECTION TWO BOILER ROOM



SECTION TWO ENGINE ROOM

Nº 1146

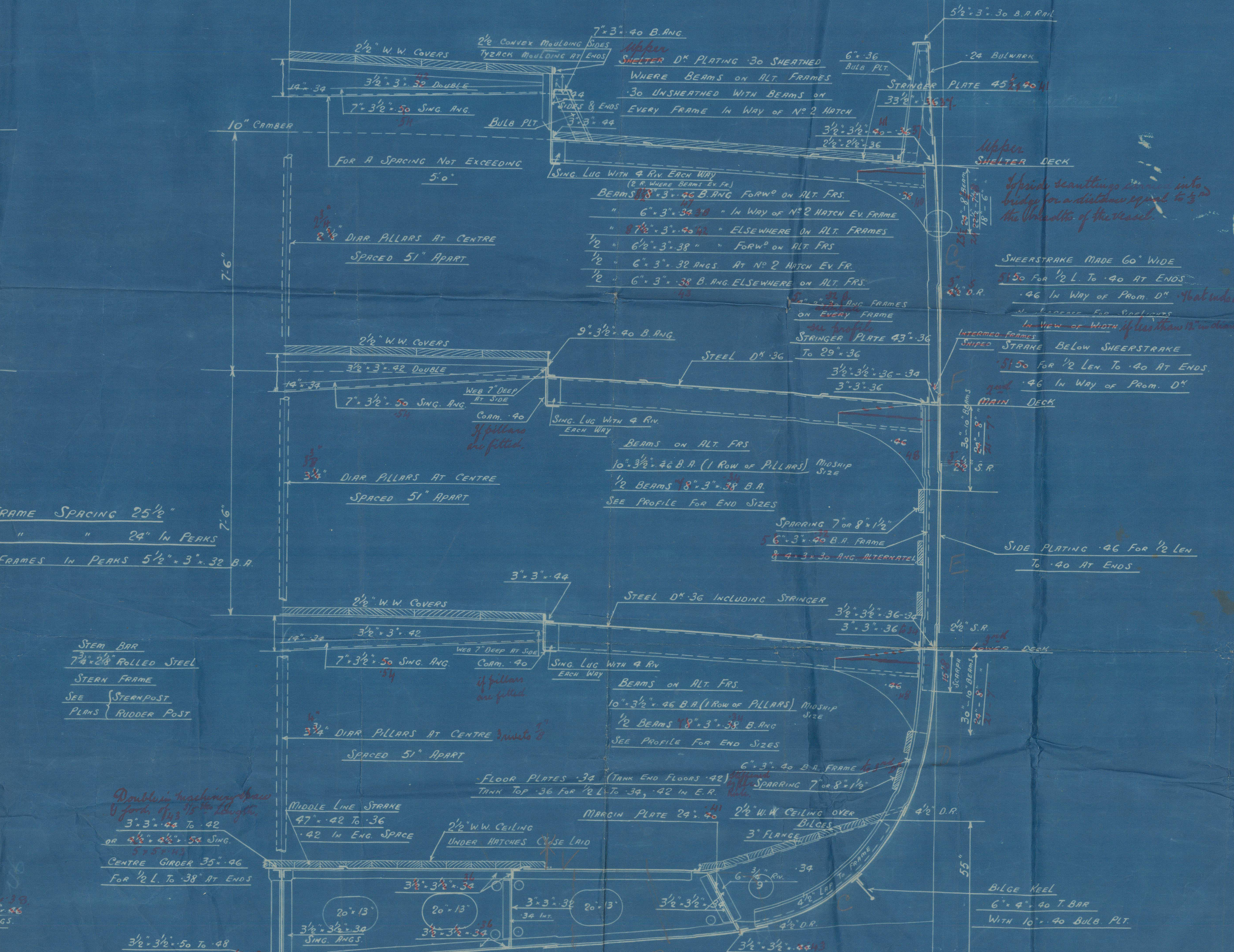
MIDSHIP SECTION

LENGTH A.P. 280'-0" x 39'-10" M.P. x 25'-0" to 34'-0"

To CLASS LLOYDS 100 A.I. WITH FREEBOARD

SCALE 1/2" = 1 FOOT

SECTION TWO HOLDS



Bottom Plating .40 for 1/2" to .42 at Ends
Midship Thickness of Two Strakes in Bottom
Plating Maintained to Rule Position of Collision and

TABLE OF MATERIALS

ITEM	QUANTITY	UNIT	REMARKS
STEEL PLATE	40.00	SQ. FT.	
STEEL BEAMS	10.00	TONS	
STEEL RAILS	10.00	TONS	
STEEL BOLTS	10.00	TONS	
STEEL NUTS	10.00	TONS	
STEEL WELDS	10.00	TONS	
STEEL RIVETS	10.00	TONS	
STEEL BRACKETS	10.00	TONS	
STEEL ANCHORS	10.00	TONS	
STEEL SHROUDS	10.00	TONS	
STEEL KICKERS	10.00	TONS	
STEEL STAYS	10.00	TONS	
STEEL TRUSS	10.00	TONS	
STEEL GIRDERS	10.00	TONS	
STEEL JOISTS	10.00	TONS	
STEEL FLOORS	10.00	TONS	
STEEL CEILING	10.00	TONS	
STEEL WALLS	10.00	TONS	
STEEL DOORS	10.00	TONS	
STEEL WINDOWS	10.00	TONS	
STEEL VENTS	10.00	TONS	
STEEL EXHAUSTS	10.00	TONS	
STEEL PIPES	10.00	TONS	
STEEL VALVES	10.00	TONS	
STEEL FITTINGS	10.00	TONS	
STEEL WELDS	10.00	TONS	
STEEL RIVETS	10.00	TONS	
STEEL BRACKETS	10.00	TONS	
STEEL ANCHORS	10.00	TONS	
STEEL SHROUDS	10.00	TONS	
STEEL KICKERS	10.00	TONS	
STEEL STAYS	10.00	TONS	
STEEL TRUSS	10.00	TONS	
STEEL GIRDERS	10.00	TONS	
STEEL JOISTS	10.00	TONS	
STEEL FLOORS	10.00	TONS	
STEEL CEILING	10.00	TONS	
STEEL WALLS	10.00	TONS	
STEEL DOORS	10.00	TONS	
STEEL WINDOWS	10.00	TONS	
STEEL VENTS	10.00	TONS	
STEEL EXHAUSTS	10.00	TONS	
STEEL PIPES	10.00	TONS	
STEEL VALVES	10.00	TONS	
STEEL FITTINGS	10.00	TONS	

TABLE OF MATERIALS

ITEM	QUANTITY	UNIT	REMARKS
STEEL PLATE	40.00	SQ. FT.	
STEEL BEAMS	10.00	TONS	
STEEL RAILS	10.00	TONS	
STEEL BOLTS	10.00	TONS	
STEEL NUTS	10.00	TONS	
STEEL WELDS	10.00	TONS	
STEEL RIVETS	10.00	TONS	
STEEL BRACKETS	10.00	TONS	
STEEL ANCHORS	10.00	TONS	
STEEL SHROUDS	10.00	TONS	
STEEL KICKERS	10.00	TONS	
STEEL STAYS	10.00	TONS	
STEEL TRUSS	10.00	TONS	
STEEL GIRDERS	10.00	TONS	
STEEL JOISTS	10.00	TONS	
STEEL FLOORS	10.00	TONS	
STEEL CEILING	10.00	TONS	
STEEL WALLS	10.00	TONS	
STEEL DOORS	10.00	TONS	
STEEL WINDOWS	10.00	TONS	
STEEL VENTS	10.00	TONS	
STEEL EXHAUSTS	10.00	TONS	
STEEL PIPES	10.00	TONS	
STEEL VALVES	10.00	TONS	
STEEL FITTINGS	10.00	TONS	

No 1146

Hunter & Higham Richardson & Co

Plan of Midship Section

No 2

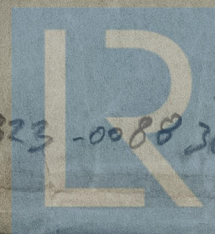
Zonadich

S. S. "HADRIAN."

NEWCASTLE ON TYNE.

Report No. 46839.

008823-008830-0055



© 2021

008823-008830-0055 Lloyd's Register
Foundation