

NOS 14 - 5

# SINGLE SCRW COASTERS

## MIDSHIP SECTION

SCALE 1/2" = 1 FT

28.11.19

### RIVETING

- BUTTS OF KEEL STRAKE OVERLAPPED & RIVETED AT ENDS
- BOTTOM PLATING TO UPPER TURN OF BILGE D.R. THROUGHOUT
- STRAKE BELOW SHEER IN WAY OF M.D. T.R. FOR EL D.R. AT ENDS
- STRAKE IN WAY OF 1/2" D.R. THROUGHOUT
- SHEERSTRAKE IN WAY OF M.D. T.R. FOR EL D.R. AT ENDS
- 1/2" D.R. FOR EL D.R. AT ENDS
- MAIN D.K. STRINGER PLATE T.R. FOR EL D.R. AT ENDS
- QUARTER D.K. OVERLAPPED & D.R. THROUGHOUT
- DECK PLATES D.R. FOR EL S.R. AT ENDS
- CENTRE GIRDER D.R. THROUGHOUT
- MARGIN PLATE
- MIDDLE LINE STRAKE
- INNER BOTTOM D.R. FOR EL S.R. AT ENDS

Shake below R.R. then T.R. for 1/2" D.R. at ends.

LENGTH BETWEEN PERPS.	165' 0"
BREADTH MOULDED	25' 6"
DEPTH	12' 0"
AT RAISED Q.S. D.K.	15' 0"
IN WAY OF MAIN DECK	9' 5"
QUARTER DECK	12' 5"
BOILER ROOM	13' 6"

ANG. N° IN WAY OF MAIN D.K.	37.5
QUARTER D.K.	40.5
MAIN D.K.	6187.5
QUARTER D.K.	6682.5
IN WAY OF MAIN D.K.	13.75
QUARTER D.K.	11

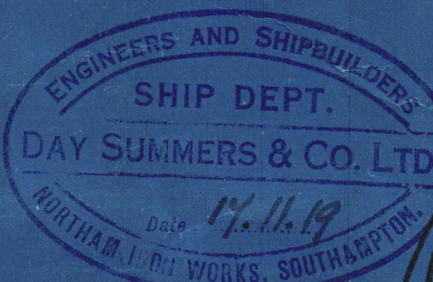
### EQUIPMENT NUMERAL

LONGITUDINAL N°	6187.50
RAISED QUARTER D.K.	306.00
BRIDGE D.K.	55.13
FORECASTLE D.K.	121.00
E & B CASING	161.25
	6830.88

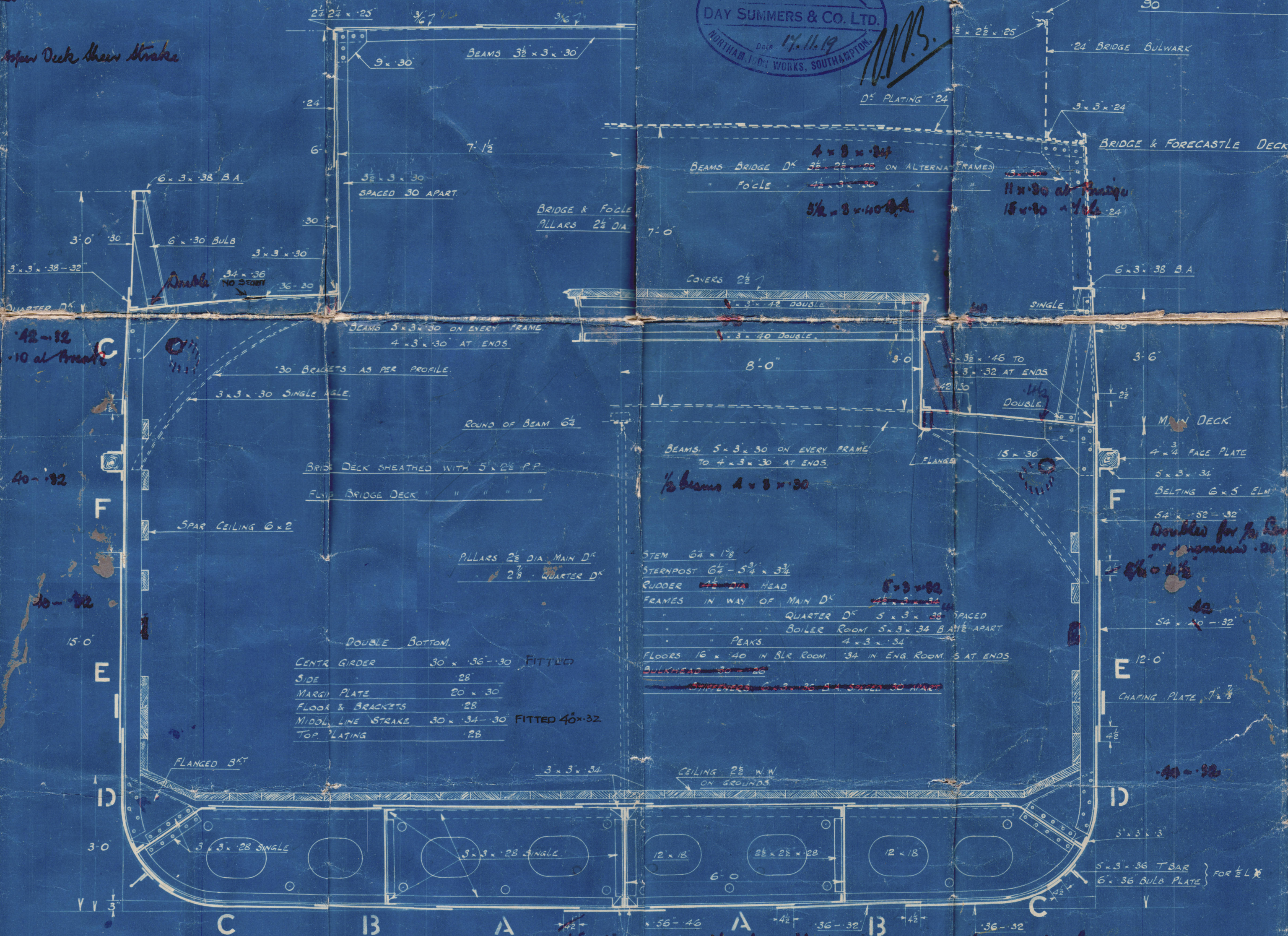
### EQUIPMENT

2 BOWER ANCHORS	122 CWTs.	STOCKLESS
1 " " "	25 " "	" "
1 STREAM " "	4 " "	EX STOCK
1 KEDGE " "	1 1/2 " "	" "
195 FATHOMS	1 1/2 " "	STUD CHAIN CABLE
60 " "	2 1/2 " "	STEEL WIRE ROPE
75 " "	2 1/2 " "	" " OR 8" MANILLA
30 " "	6 " "	WARP

CLASS 100 A LLOYDS.



SHELL RIVETS THROUGH MIDSHIP EL SPACED 3/8" apart  
plating & frames  
ALL SHELL RIVETS 1/2" in way of Upper Deck then Strake



42-32  
measured 10 at front

40-32

30-32

15' 0"

E

D

C

B

A

13

13

C

D

E

42

54

4

3

3

3

3

3

3

3

3

3

3

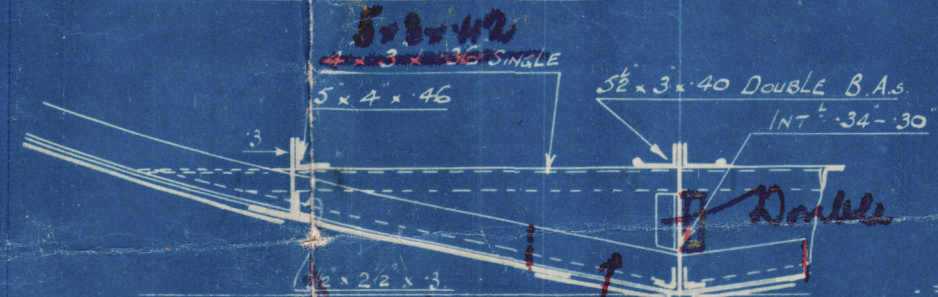
3

3

3

3

### SECTION TWO B.L. ROOM



Midship thickness of A & B taken from  
to Rule for of hull plate  
SECTION AT MIDSHIP EL SHEWS  
ADDITIONAL INTERCOSTALS FORWARD

Half piece to be fitted  
for 1/2" beam.

Doubles forward of 1/2" beam  
cannot be for forward as practicable

R.M.M.  
28.11.19.

DRC N° 525





Messrs Day Sumner

S.S. No 184 - S

Midship Section

S.S. No 188.

S/S. Cambalu.

Sou. 10767.

S/S. Allanwater

Sou 10809.

Manwith  
Lead

"Blackcock"

Sou 11065

\* Monrovia Lined  
Wreck Bay 169

Plans transferred to  
Section 4 to  
Gashaw

S. S. K.



© 2021

Lloyd's Register  
Foundation

008855-008862-0093