

Lloyd's Register of Shipping.

SURVEYS FOR FREEBOARD.

(CONDITIONS OF ASSIGNMENT.)

15 FEB 1954

Ship's Name M/T "H A V J A R L"

Port of Survey Malmö.

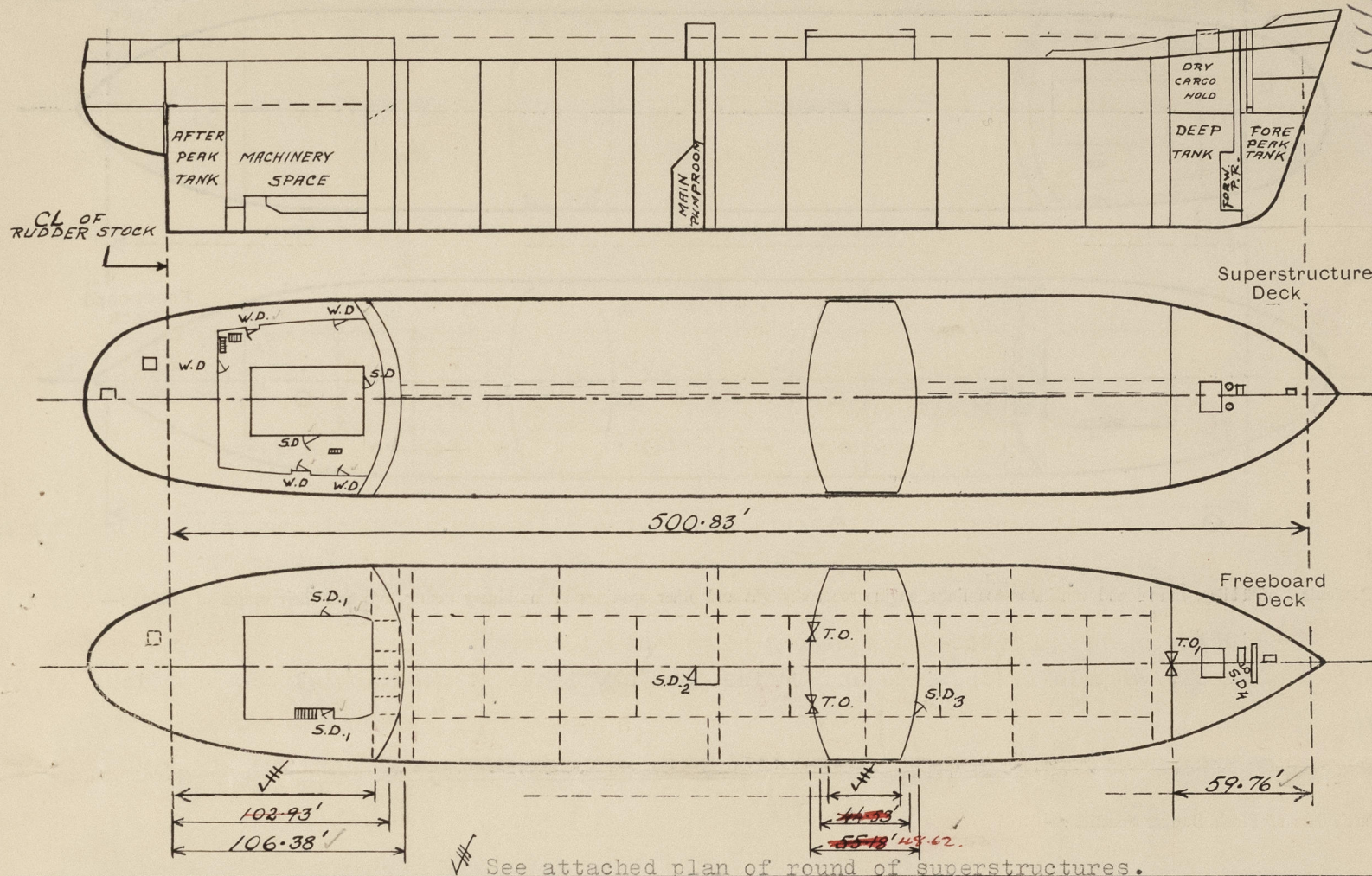
Official Number

Surveyor's Signature *Föransoy.*

Nationality and Port of Registry Norwegian, Oslo.

Date of Survey Whilst Building.

Disposition and dimensions of superstructures, trunks, deckhouses and machinery casings to be inserted in the diagrams and tabular statement:—

GOVT. COPY ISSUED
OWNERS' C.11 ISSUED

Particulars of Superstructures, Trunks, Casings, Deckhouses.

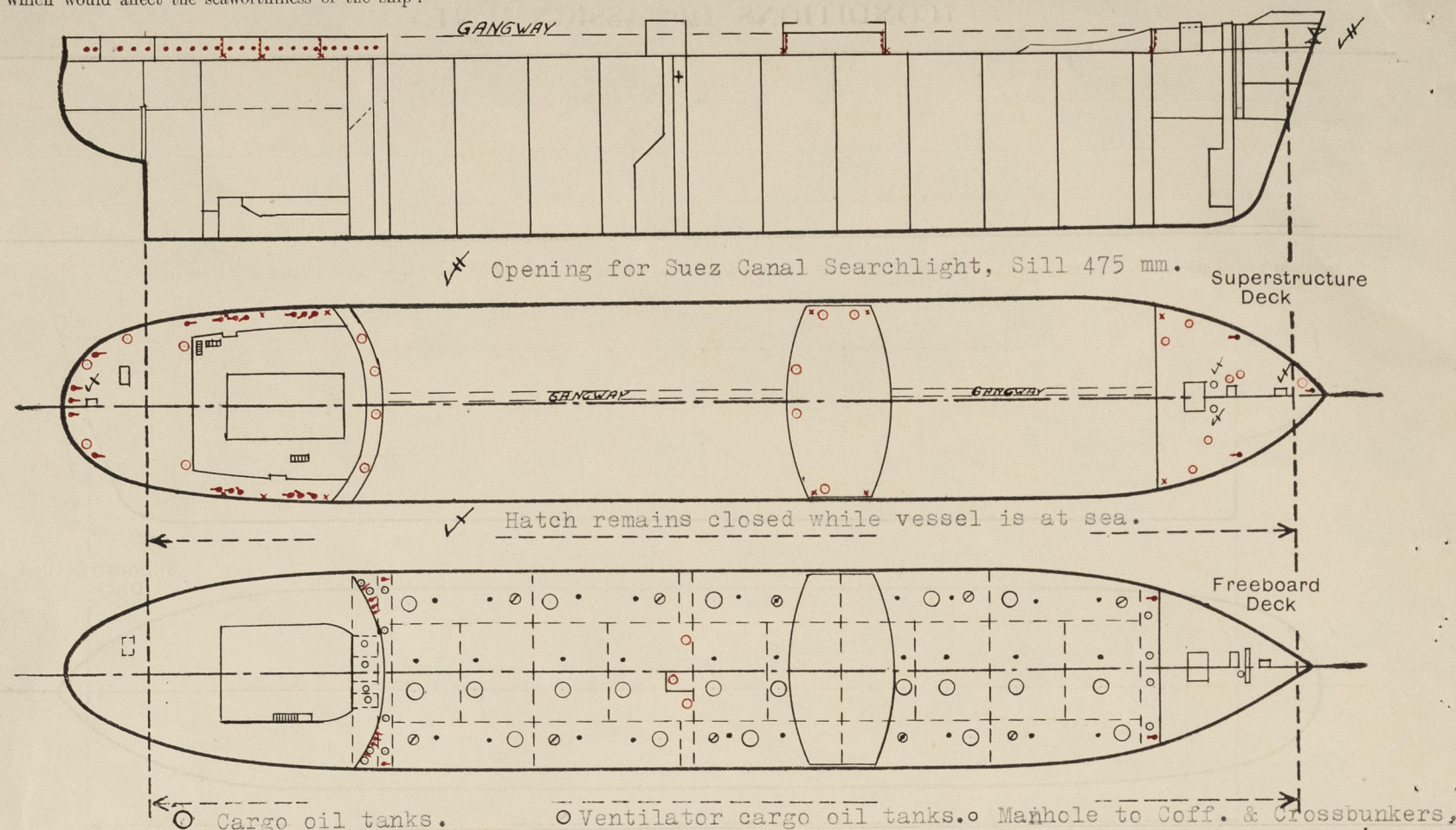
	Coaming	Plating	T Stiffeners	Spacing mm.	End Attachments of Stiffeners	Size of Openings mm.	Height of Sills mm.	Height of Casings mm.
Poop Bulkhead ...	-	.52	250x100x135	810-980	T: R & W. ✓ B: W. ✓	-	-	2410
Raised Quarter Deck Bulkhead ...	-	-	-	-	-	-	-	-
Bridge, After Bulkhead ...	-	.32	65x65x8.5	800-850	T: W. ✓ B: W. to Br. ✓	1315x935	580 ✓	2425
Bridge, Forward Bulkhead ...	-	.52	250x90x11.5	835-850	T: R & W. to Br. ✓ B: W. to Br. ✓	1525x945	460 ✓	2435
Forecastle Bulkhead ...	-	.30	4"x3"x3/8"	825-850	T: W. ✓	1610x1255	430 ✓	2750
Trunk, Aft ...	-	-	-	-	-	-	-	-
Trunk, Forward Pump Room ...	-	-	-	-	-	-	-	-
Exposed Machinery Casings on Freeboard or Raised Quarter Decks ...	-	.30	3 1/2"x3"x.32	555-595	T: W. to Br. ✓	1490x860	1290 X	3000 X
Exposed Machinery Casings on Superstructure Decks Pump Room Fwd ...	-	.30	3 1/2"x2 1/2"x.32	840	T: W. ✓	1600x740	320 ✓	2745
Machinery Casings within Superstructures not fitted with Class I Closing Appliances ...	-	-	-	-	-	-	-	-
Deckhouses on Flush Deck Ships ...	-	-	-	-	-	-	-	-

Particulars of Closing Appliances (state if capable of being manipulated from both sides).

Poop Bulkhead ...	---
Raised Quarter Deck Bulkhead ...	---
Bridge, After Bulkhead ...	Tonnage openings closed by steel plates secured by hook bolts. X
Bridge, Forward Bulkhead ...	Strong hinged W.T. steel door capable of being manipulated from both sides. X
Forecastle Bulkhead ...	Tonnage opening closed by steel plates secured by hook bolts. X
Exposed Machinery Casings on Freeboard or Raised Quarter Decks ...	Strong hinged W.T. steel door capable of being manipulated from both sides. X
Exposed Machinery Casings on Superstructure Decks Pump Room Fwd ...	Strong hinged W.T. steel door capable of being manipulated from both sides. X
Machinery Casings within Superstructures not fitted with Class I Closing Appliances ...	---
Deckhouses on Flush Deck Ships ...	---

PARTICULARS OF PROTECTION TO OPENINGS, ETC.

The following diagrams should be used to indicate the positions of cargo and coaling hatchways, gangway, cargo and coaling ports, ventilators, companionways, etc., which would affect the seaworthiness of the ship :-



Particulars of fiddle, funnel and ventilator coamings, engine room skylight and other openings in machinery casing tops and their means of closing :-

Fiddle openings fitted with strong hinged steel covers. X
Funnel, ventilator coamings and engine room skylights of substantial construction. X

Particulars of Flush Bulker Scuttles :-

NONE. X

Particulars of Companionways :-

Entrance to crews' accommodation thro' steel deck house.

W.D. = Wood door, Sill 455 mm. X
S.D. = Steel door, " 340 " X
S.D.1 = " " " 350 " X
S.D.2 = " " " 1290 " X
S.D.3 = " " " 460 " X
S.D.4 = " " " 320 " X
T.O. = Tonnage opening, " 580 " X
T.O.1 = " " " 430 " X
All doors capable of being manipulated from both sides. X

Particulars of Ventilators in exposed positions on freeboard and superstructure decks :-

Forecastle deck: 4-18" diameter x 36" high. X
1-12" " x 36" " X
2-9" " x 36" " X
Bridge deck: 5-12" " x 30" " X
2-12" " x 33" " X
Poop deck: 3-12" " x 30" " X
2-9" " x 33" " X
2-6" " x 33" " X
Main deck: 1-18" " x 30" " (On P.R. ent.top) X
2-26" " (derrick posts) X

Ventilator coamings are of strong construction and provided with efficient means of closing. Ventilators over 33" are adequately supported. X

Particulars of Air Pipes in exposed positions on freeboard, ~~deck~~ or superstructure decks :-

Forecastle deck: 3-4" diameter x 36" high. X
Poop deck: 3-2" " x 30" " X
4-2 1/2" " x 30" " X
9-3" " x 30" " X
3-3 1/2" " x 30" " X
Main deck: 8-3 1/2" " x 36" " X
4-4" " x 36" " X

All air pipes are of gooseneck type. Air pipes on main deck are substantially supported to poop and forecastle bulkheads. X
Air pipes to cofferdams, forward and aft, are provided with means of closing in form of screw down valve. X
Oil fuel tank air pipes are provided with wire gauge and canvas cover, remainder with wood plugs.

Particulars of Gangway Cargo and Coaling Ports :-

NONE.

Harlan. 15 FEB 1954

Particulars of Scuppers and Sanitary Discharge Pipes :-

Forecastle deck and space are drained on to weather deck thro' holes in forecastle bulkhead. Holes from forecastle space fitted with screwed plugs attached by chains to bulkhead. X
Bridge deck drained by scuppers port and starboard thro' forward and aft bridge bulkheads on to weather deck. X
Poop deck drained by scuppers port and starboard sides thro' poop side plating. X
Sanitary discharges from bridge accommodation are led into cofferdam of midship pumproom, starboard side and thro' shell plating above W.L. and fitted with screw down non-return valve and spindle to upper deck with openshut indicator. X
Sanitary discharges from poop deck house and from poop space are led overboard in engine room below W.L. and fitted with screw down non-return valves in easy accessible positions. X

Particulars of Side Scuttles :-

All side scuttles are of strong construction and are fitted with hinged dead lights. X

Vertical distance of Sill of lowest Side Scuttle above top of keel. About 13890 mm. X

Particulars of Guard Rails :-

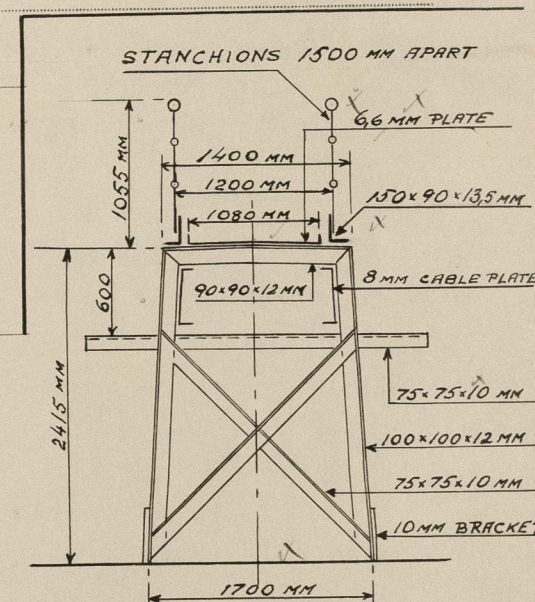
Poop deck: Open rails above stem height 1050 mm. 3 rods. Bulwarks at sides and in front.

Forecastle deck: Open rails height 1055 mm. 3 rods. X

Main Deck: Open rails height 1025 mm. 3 rods except for about 15 metres at fore end where bulwark is fitted. X

Particulars of Gangways, Lifelines, etc. :-

Gangway fitted as per sketch from poop to bridge and bridge to forecastle supports spaced 3000 mm. apart.



Particulars of Freeing Arrangements.						
	Length of Bulwark	Height of Bulwark	Size of Freeing Ports	Number each side	Area each side	Rule area each side
After Well ...						
Forward Well ...						
State position of each freeing port ... { After Well :- (F. and A. position and height above deck edge) { Forward Well :-						
State whether the freeing ports are fitted with shutters, bars, or rails, and give particulars of such :-						
Additional area where sheer is less than standard.						

PARTICULARS OF PROTECTION TO OPENINGS, ETC.

HATCHWAYS ON FREEBOARD AND SUPERSTRUCTURE DECKS.											
Description of Hatchway			F.P.	Cargo	Cargo	Ventilator	Manhole	Forecastle	Pump	Hawser	Dry
Dimensions of Hatchway			Store.	oil	oil	holes	to coff.	prov.	Focle.	room	openings
			1025x	1225mm	1225mm	1225mm	1225mm	1225mm	1225mm	1225mm	1225mm
			785 mm.	815mm	265mm.	-	115 mm.	75mm.	380mm.	615mm.	130mm.
COAMINGS	Height above Deck	Sides	225mm.	815mm	265mm.	-	115 mm.	75mm.	380mm.	615mm.	130mm.
	Thickness	Ends	6.5mm.	13mm.	10mm.	-	10 mm.	12.5mm.	8.5mm.	8 mm.	10mm.
	Stiffeners	...	-	-	-	-	-	-	-	-	-
	Brackets, Stays	...	-	-	-	-	-	-	-	-	-
HATCH BEAMS	Number	...	-	-	-	-	-	-	-	-	-
	Spacing	...	-	-	-	-	-	-	-	-	-
	Scantling and Sketch	...	-	-	-	-	-	-	-	-	-
	Bearing Surface	...	-	-	-	-	-	-	-	-	-
FORE AND AFTERS	Number	...	-	-	-	-	-	-	-	-	-
	Spacing	...	-	-	-	-	-	-	-	-	-
	Unsupported Lengths	...	-	-	-	-	-	-	-	-	-
	Scantling* and Sketch	...	-	-	-	-	-	-	-	-	-
HATCH COVERS	Material	...	Steel	Steel	Steel	Brass	Steel	Wood	Steel	Steel	Steel
	Thickness	...	5.5mm.	12 mm.	13 mm.	15 mm.	10 mm.	2 1/2"	8.5mm.	8.5mm.	12mm.
	How fitted	...	Hinged	Dished	Hinged	Bolted	Bolted	Slab	Hinged	closed	W.T.
	Bearing Surface	...	Closed	Closed	Closed	12 bolts	18 bolts	-	-	-	-
Spacing of Cleats			-	-	-	-	-	-	-	-	-
Number of Toggles			2	-	5	-	-	-	6	4	4
*Are wood fore and afters steel shod at all bearing surfaces? Are battens and wedges efficient and in good condition? Are tarpaulins in good condition and in accordance with rule requirements? Are lashings provided in accordance with rule requirements?											

Particulars of any special features:—

Longitudinal framing. Electric welded. ✓

Steel cover on dry cargo hatch of focle.dk:—

.36 thick stiffened by 7"x3 1/2"x.40 angles spaced 845 mm. apart. ✓

Note:—

Deckline to be placed 915 mm. from top of steel deck produced.

Description:		Prov.	Aft
Dimensions:		1415x 1120mm.	1015x 695 mm.
Coamings:		465 mm. ✓	150 mm. ✓
Height above dk.		10 mm.	10 mm.
Thickness.		10 mm.	10 mm.
Hatch Covers:		Steel	Steel
Material		8.5mm. ✓	8 mm. ✓
Thickness		Hinged	Closed
How fitted		10 ✓	8 ✓
No.of toggles		10	8

UPPER DECK

RAD. 500MM

SHEER STRAKE



© 2021

Lloyd's Register
Foundation