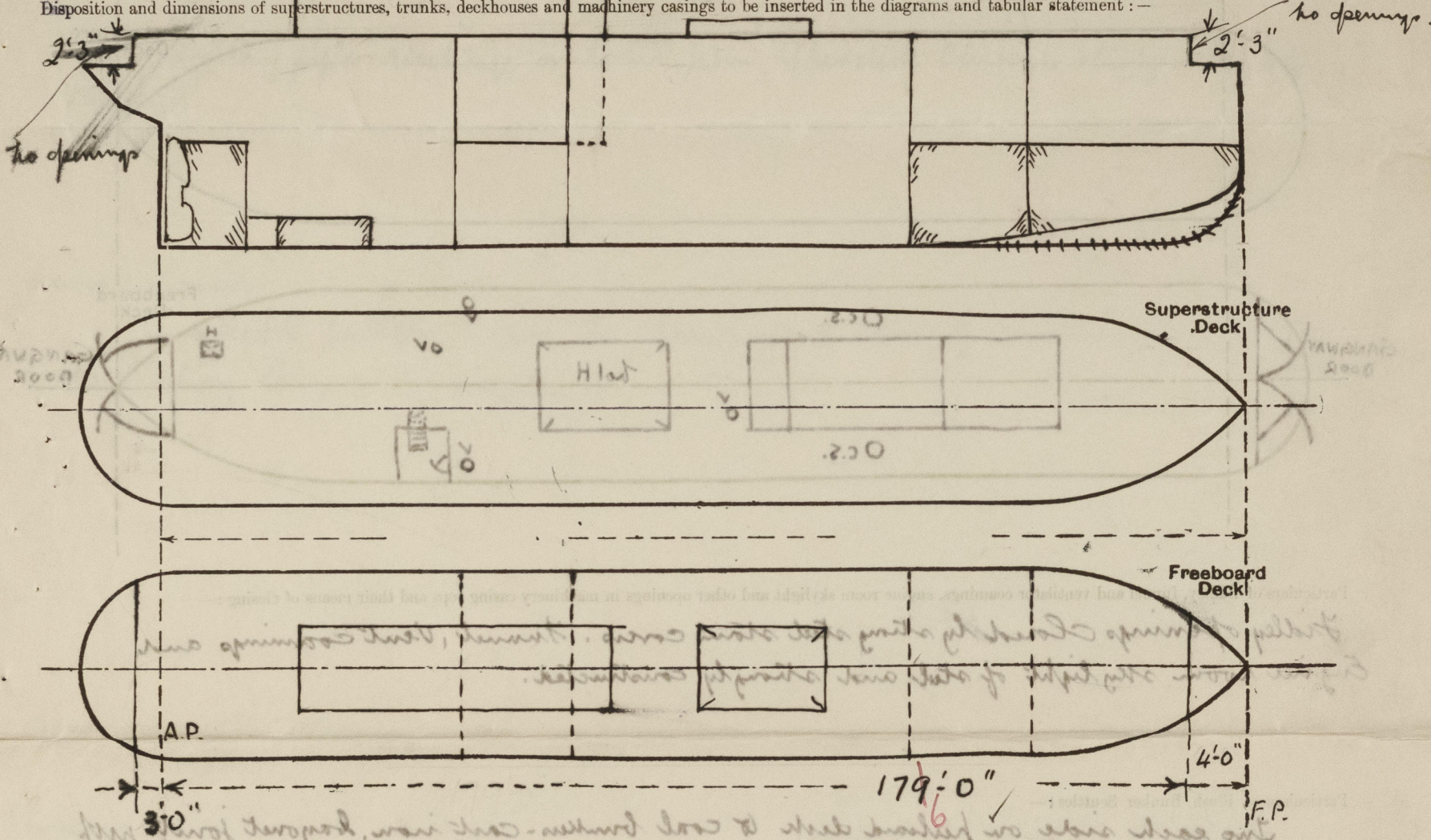


Lloyd's Register of Shipping.
SURVEYS FOR FREEBOARD.
(CONDITIONS OF ASSIGNMENT.)

Ship's Name "ECEABAT" Port of Survey Newcastle-on-Tyne.
Official Number - Surveyor's Signature E.H. Dean.
Nationality and Port of Registry Turkey - Istanbul Date of Survey During Construction.

Disposition and dimensions of superstructures, trunks, deckhouses and machinery casings to be inserted in the diagrams and tabular statement:—



Particulars of Superstructures, Trunks, Casings, Deckhouses.

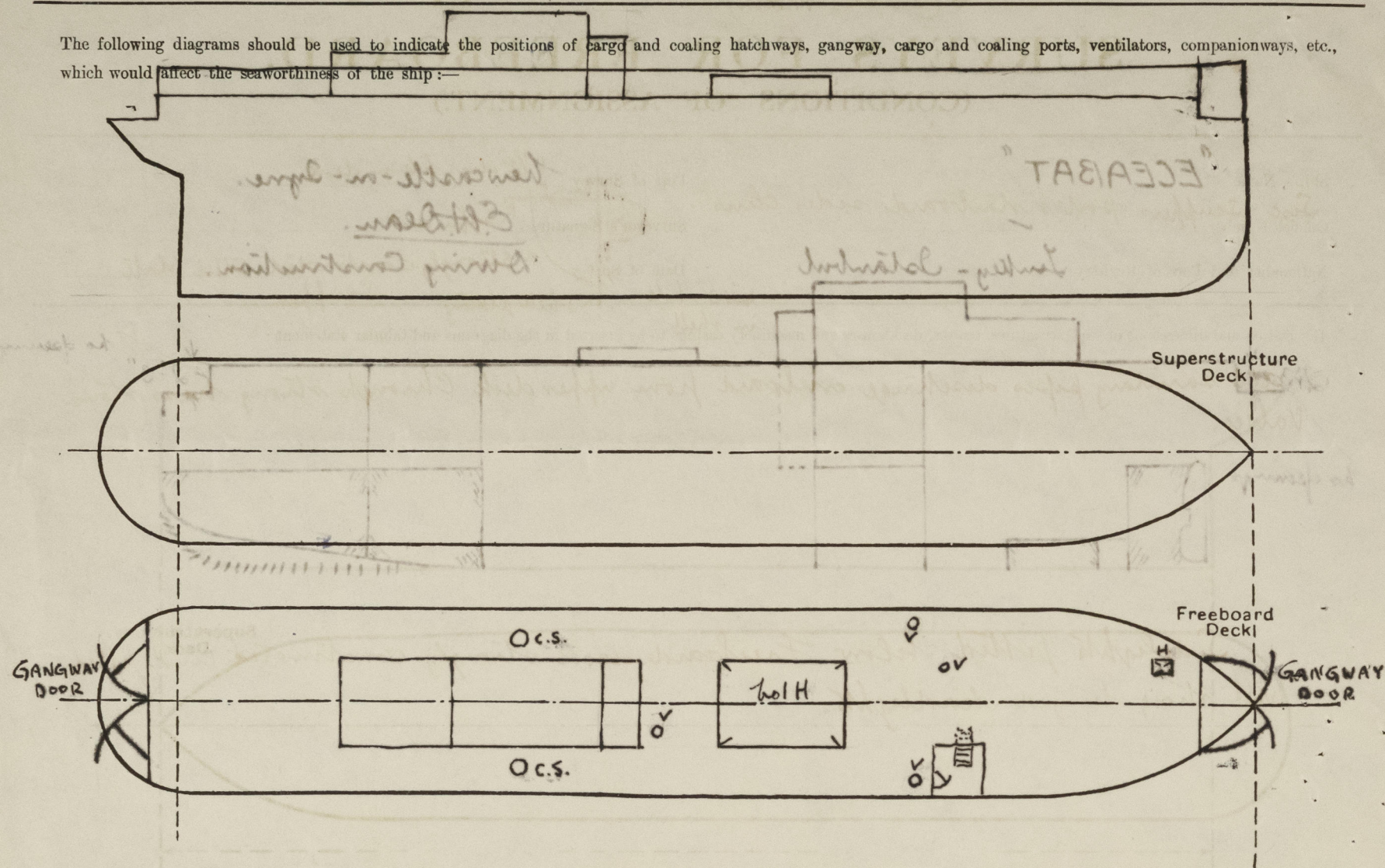
	Coaming	Plating	Stiffeners	Spacing	End Attachments of Stiffeners	Size of Openings	Height of Sills	Height of Casings
Poop Bulkhead ...	✓							
Raised Quarter Deck Bulkhead ...	✓							
Bridge, After Bulkhead ...	✓							
Bridge, Forward Bulkhead ...	✓							
Forecastle Bulkhead ...	✓							
Trunk, Aft ...	✓							
Trunk, Forward ...	✓							
Exposed Machinery Casings on Freeboard or Raised Quarter Deck ...	✓	30	4x3x 5/16	1'-10" to 2'-9"	Weld. top	2x5 4'-10" x 1'-0" end 2'-0"	18"	7'-0" & 12'-0"
Exposed Machinery Casings on Superstructure Decks ...	✓							
Machinery Casings within Superstructures not fitted with Class I Closing Appliances ...	✓							
Deckhouses on Flush Deck Ships ...	✓							

Particulars of Closing Appliances (state if capable of being manipulated from both sides).

Poop Bulkhead ...	✓
Raised Quarter Deck Bulkhead ...	✓
Bridge, After Bulkhead ...	✓
Bridge, Forward Bulkhead ...	✓
Forecastle Bulkhead ...	✓
Exposed Machinery Casings on Freeboard or Raised Quarter Deck ...	✓ Hinged steel doors operated both sides.
Exposed Machinery Casings on Superstructure Decks ...	✓
Machinery Casings within Superstructures not fitted with Class I Closing Appliances ...	✓
Deckhouses on Flush Deck Ships ...	✓

PARTICULARS OF PROTECTION TO OPENINGS, ETC.

The following diagrams should be used to indicate the positions of cargo and coaling hatchways, gangway, cargo and coaling ports, ventilators, companionways, etc., which would affect the seaworthiness of the ship:—



Particulars of fiddle, funnel and ventilator coamings, engine room skylight and other openings in machinery casing tops and their means of closing:—

Fiddle openings closed by strong steel stow covers. Funnel, vent coamings and engine room skylight of steel and strongly constructed.

Particulars of Flush Bunker Scuttles:—

Two each side on foreboard deck to coal bunkers. Cast iron, bayonet joint with chain attachment. 20" dia.

Particulars of Companionways:—

To forward accomms - steel house, strongly constructed, with door 58" x 24" sill 18" operated both sides.

Particulars of Ventilators in exposed positions on freeboard and superstructure decks:—

1 - 15" dia. P.S. to hold fwd. end. 5'4" high x .36" casing supported.
1 - 9" " P. to crew's accomms. 36" " x .32" "
1 - 15" " S. " hold aft end. 36" " x .36" "

a number of vents fitted at ships sides P.S. under bulwarks, strongly constructed thus:— 8' x 4' all vent coamings closed, wood plugs & canvas covers.

Particulars of Air Pipes in exposed positions on freeboard, raised quarter or superstructure deck:—

To F.P. Tank - 3" air pipe 36" high.
To F.W. " - 3 1/2" air & filling pipe 36" high.
To Ballast Tank - Engine Room - 3" air & filling pipe & 2 1/2" air pipe P.S. 36" high.
To A.P. Tank - 3" air pipe 36" high.
all air pipes closed, wood plugs & canvas covers.

No. 98652.

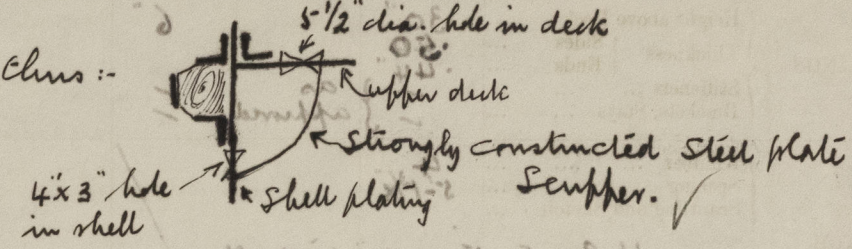
0005

Particulars of Gangway Cargo and Coaling Ports:—

at fore and after ends in way of bulwarks, strongly constructed. (See also sketch).

Particulars of Scuppers and Sanitary Discharge Pipes:—

Side scuppers ports & starboard sides thus:—



all sanitary pipes discharge overboard from upper deck through strong brass storm valves.

Particulars of Side Scuttles:—

Sidelights fitted below freeboard deck strongly constructed and fitted with strong hinged deadlights.

Vertical distance of Sill of lowest Side Scuttle above top of keel

12'-10"

Particulars of Guard Rails:—

Particulars of Gangways, Lifelines, etc.:—

Provision made for rigging lifelines in all parts of the ship which might have to be used by the crew in the regular working ship.

Particulars of Freeing Arrangements.						
	Length of Bulwark	Height of Bulwark	Size of Freeing Ports	Number each side	Area each side	Rule area each side
Aft Well	179'-0"	3'-9"	3'-0" x 1'-1 1/2"	11	36 sq	24.6 for 7L
Forward Well	✓	✓	✓	✓	✓	✓
State position of each freeing port ... Aft Well:— as approved (P. and A. position and height above deck edge) Forward Well:— 7"						
State whether the freeing ports are fitted with shutters, bars, or rails, and give particulars of such:— Hinged flaps and one horizontal Rod, hinges fitted with brass pins.						
Additional area where sheer is less than standard. ✓						

२५०००

Particulars of any special features :—

Depth woulded to step forward & aft end 12'-9"
85% " " " " " " " " 10'-10"

moulded displacement @ 10'-10" moulded draught 1436 tons
 " Coefficient .644.

Endorsement at first survey and at surveys for renewal of Certificate :—

The fittings and appliances are in accordance with the particulars shown on this form (or as now modified) and are in good condition.