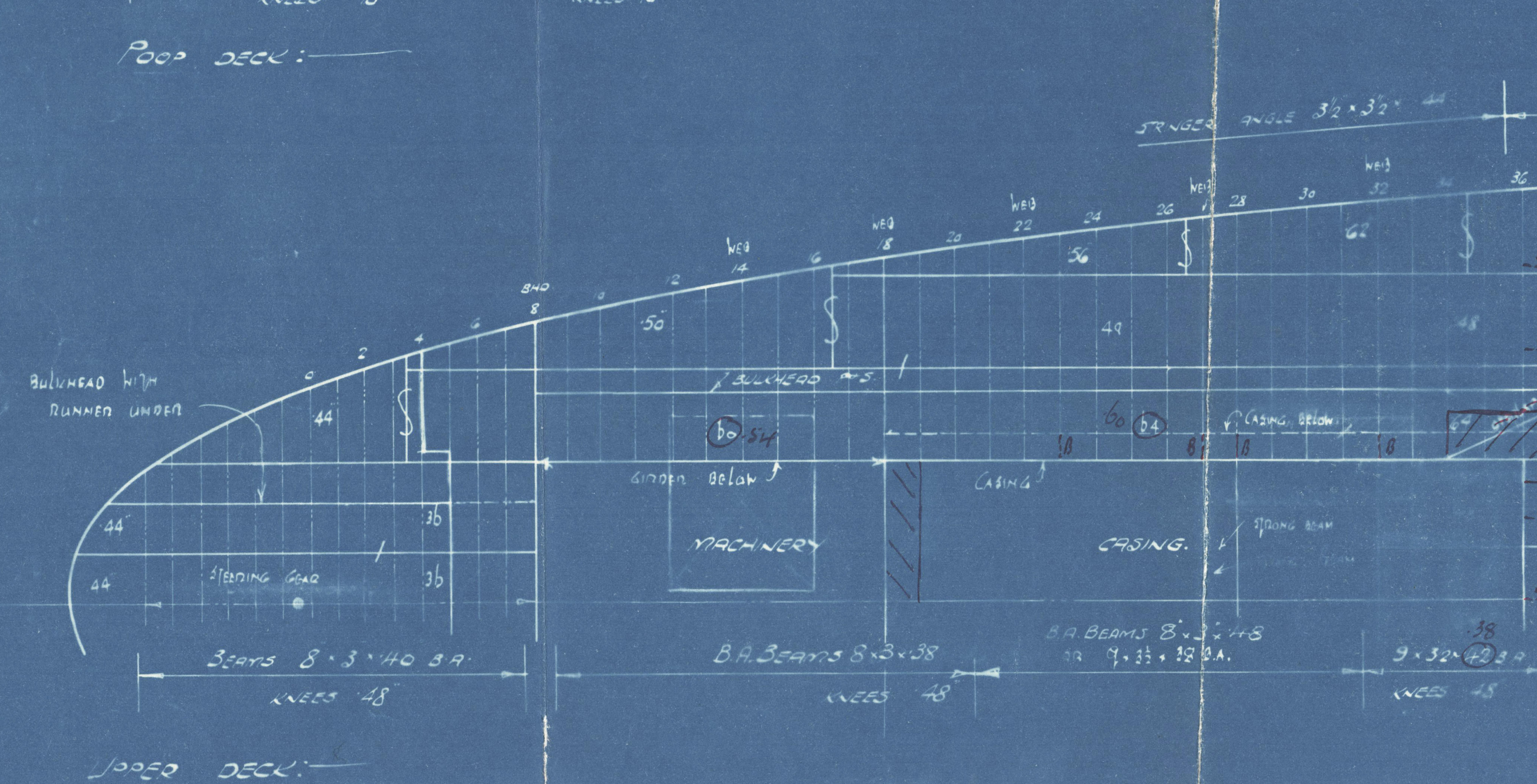
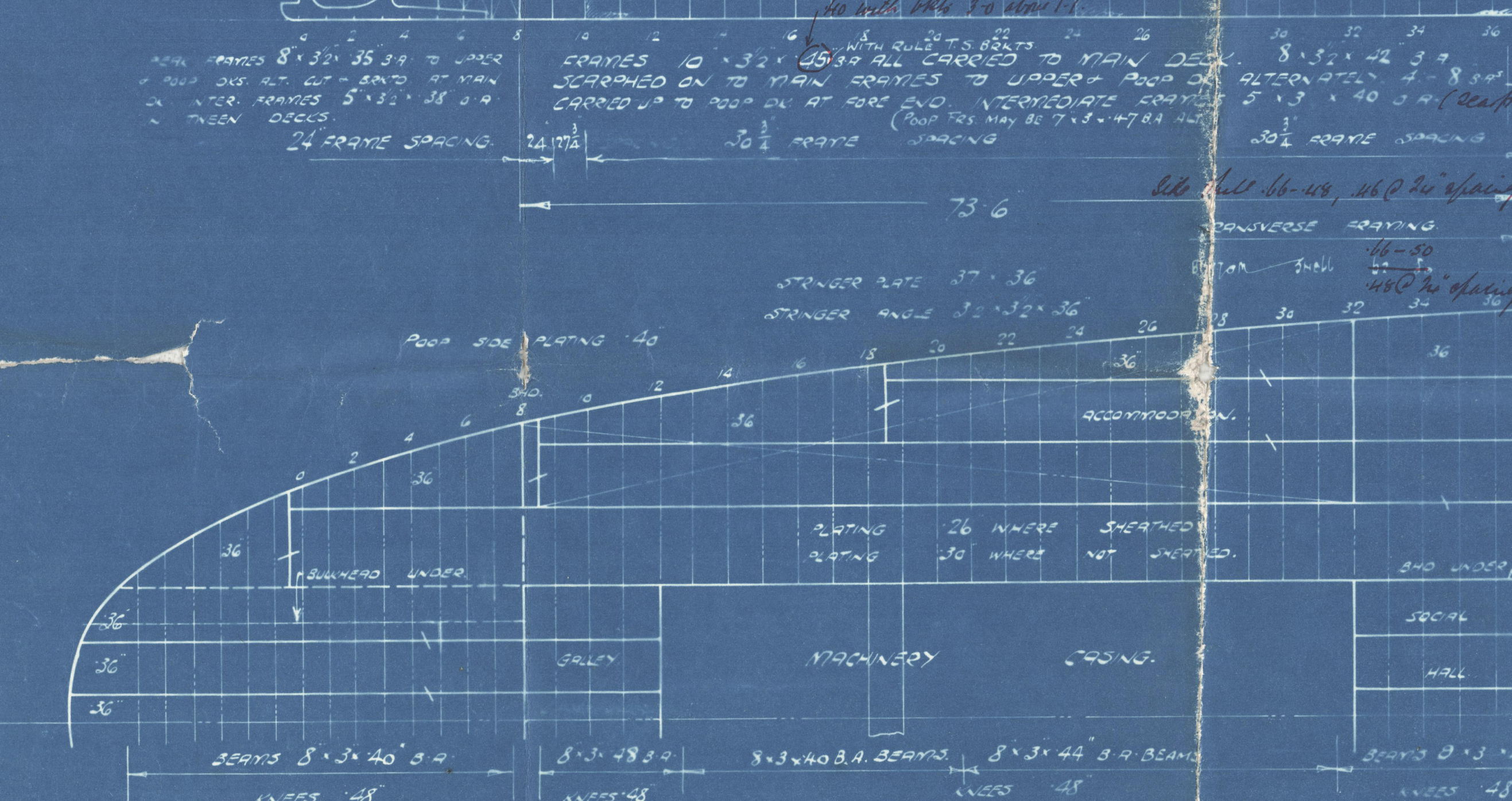
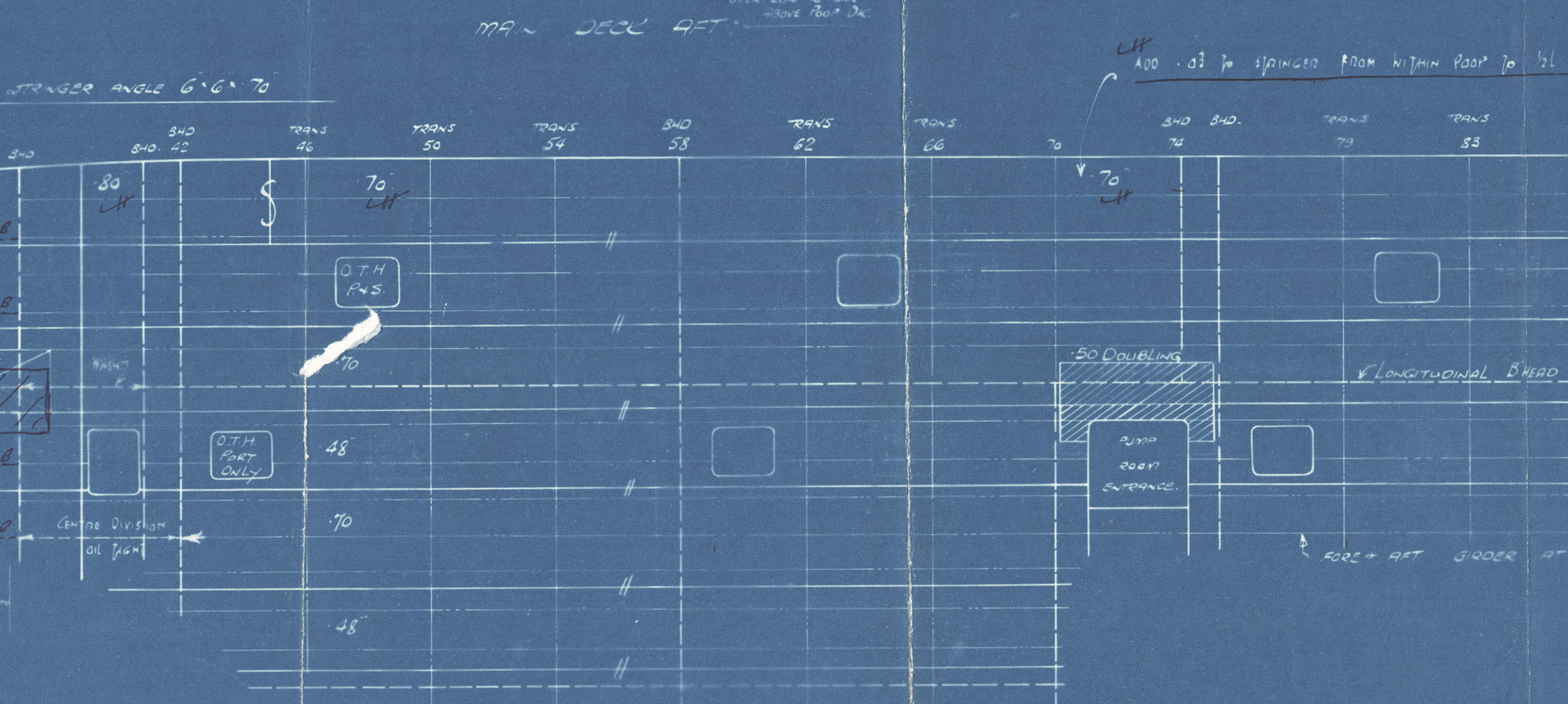
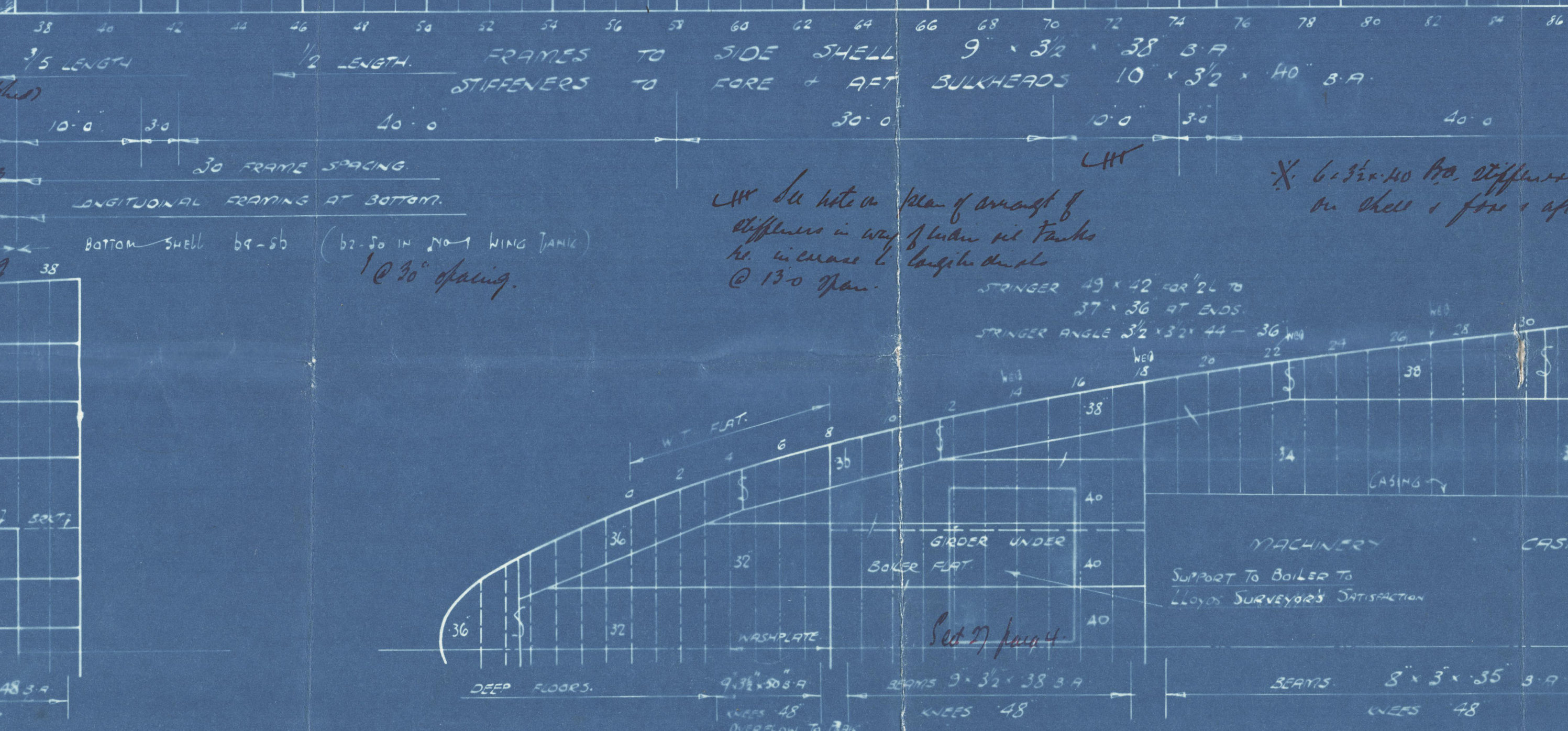
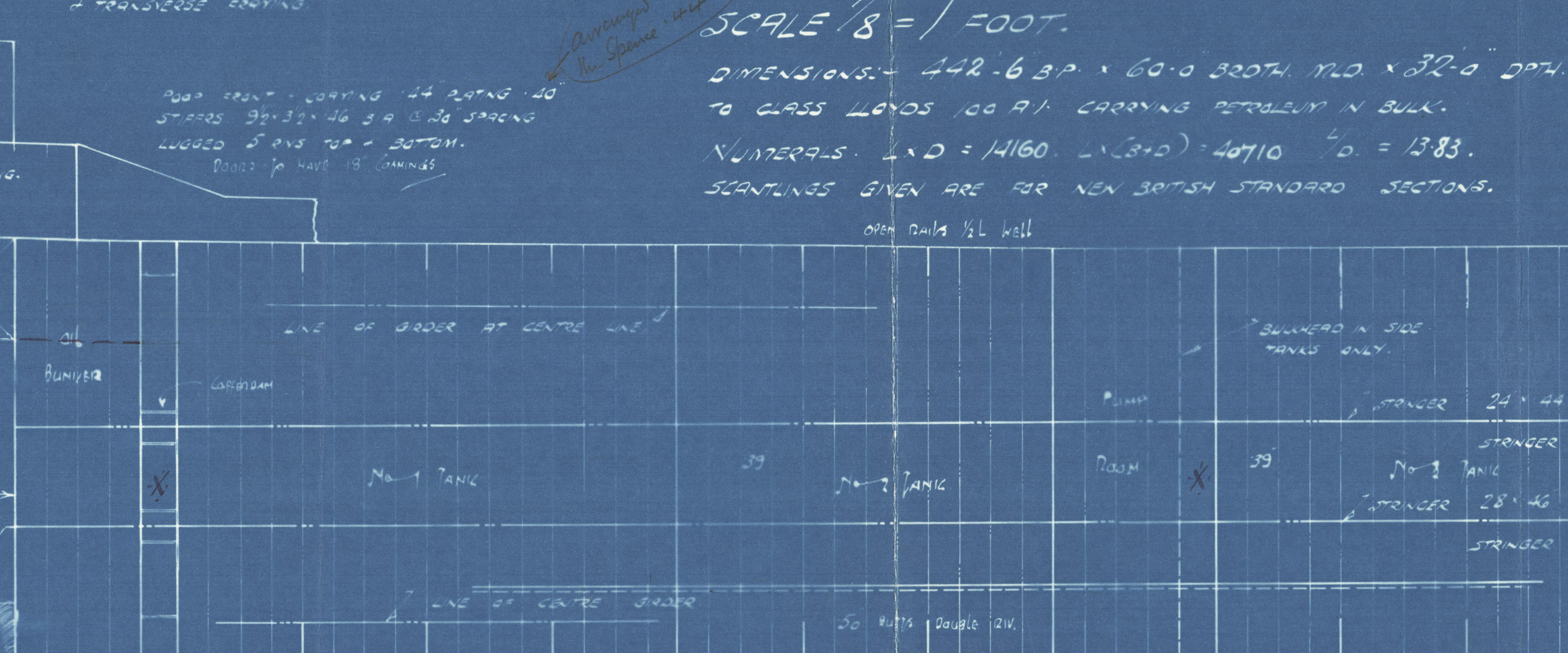


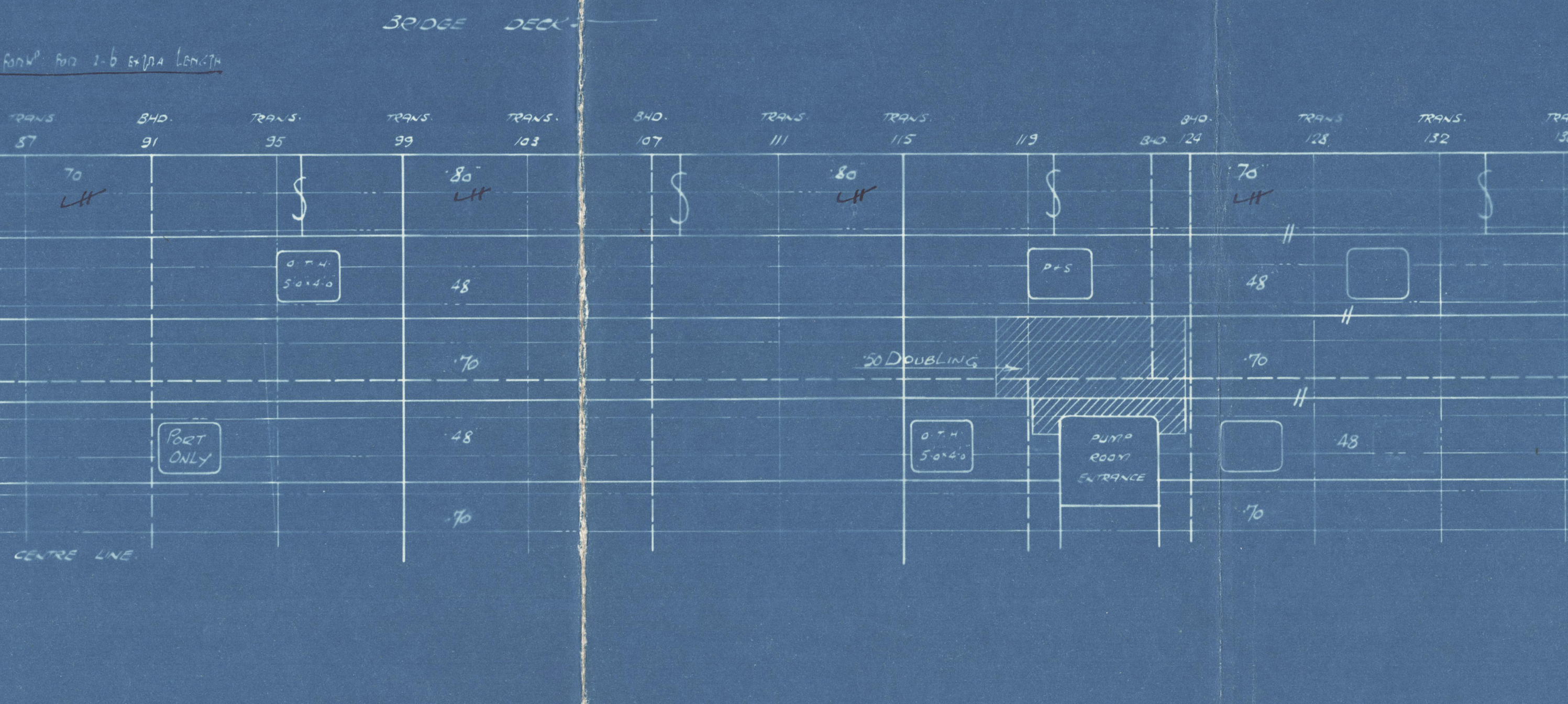
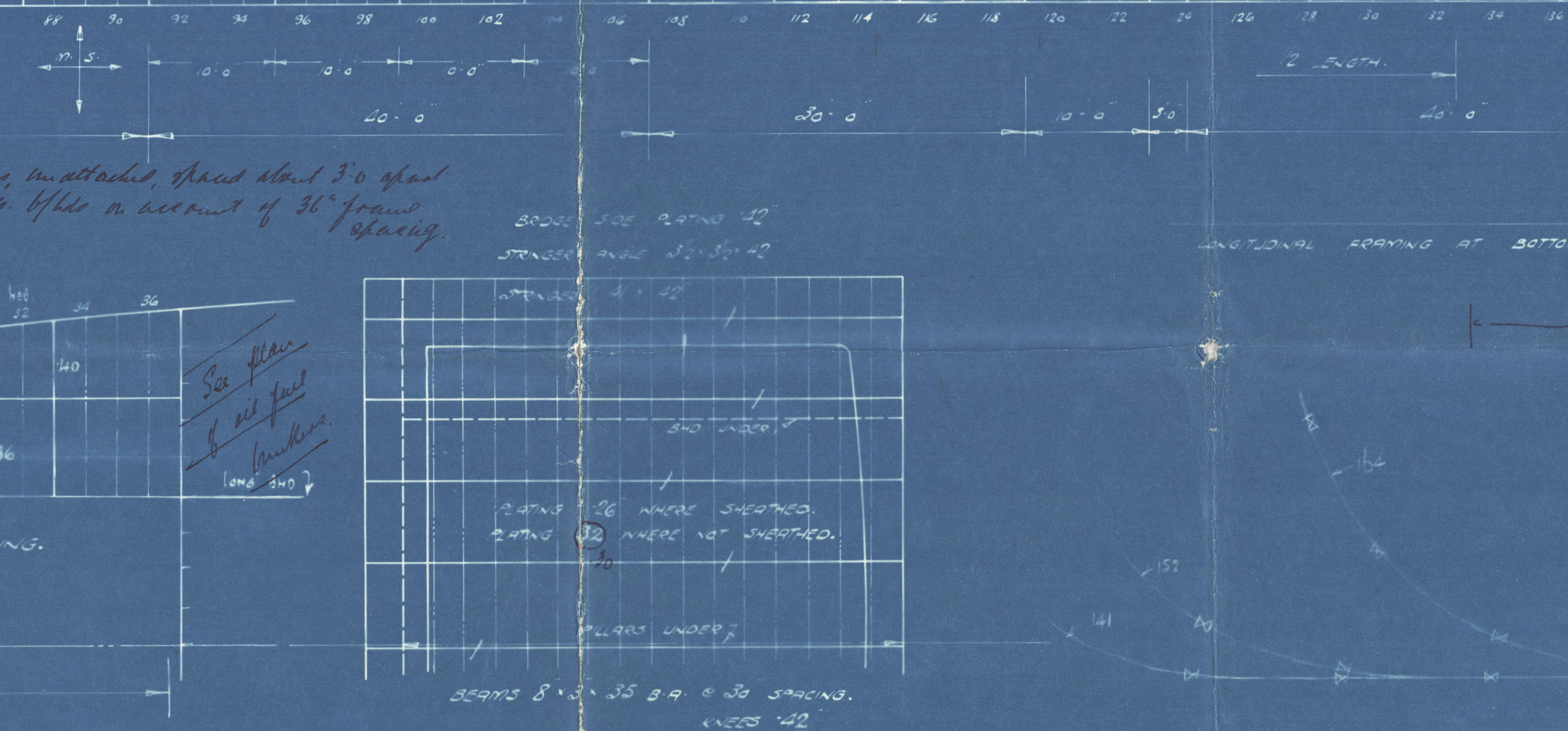
PORT BEAM BULKHEAD.
BOUNDARY BEAM 3' 3 1/2" x 36" 50 (S.S. NAME)
STIFFENERS 12" x 10" AT BOTTOM STANCE
STIFFENERS 11" x 3 1/2" x 36" 50 IN DEEP TANK. BULKHEAD AT 30' STANCE
STIFFENERS 3' 3 1/2" x 36" 50 IN DEEP TANK. BULKHEAD AT 30' STANCE



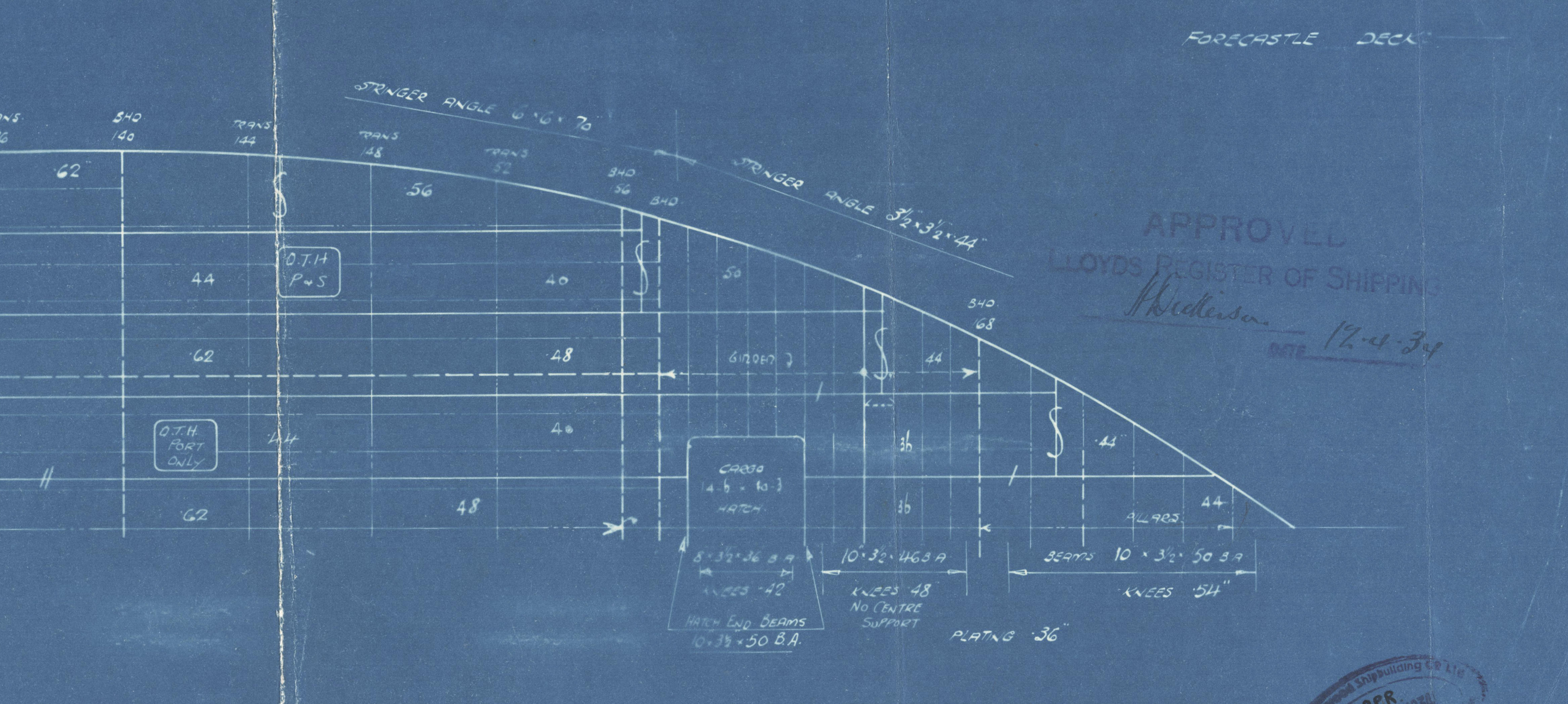
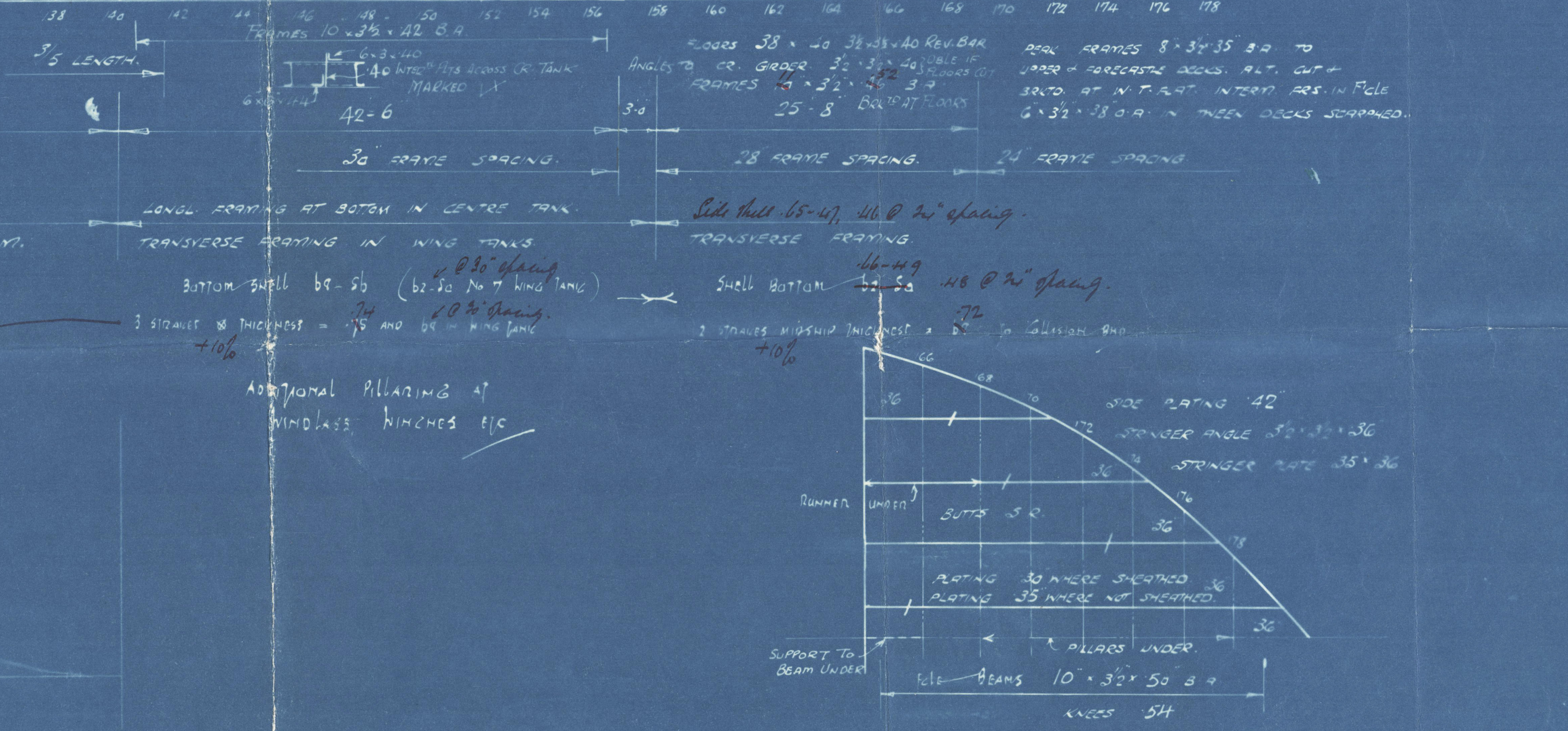
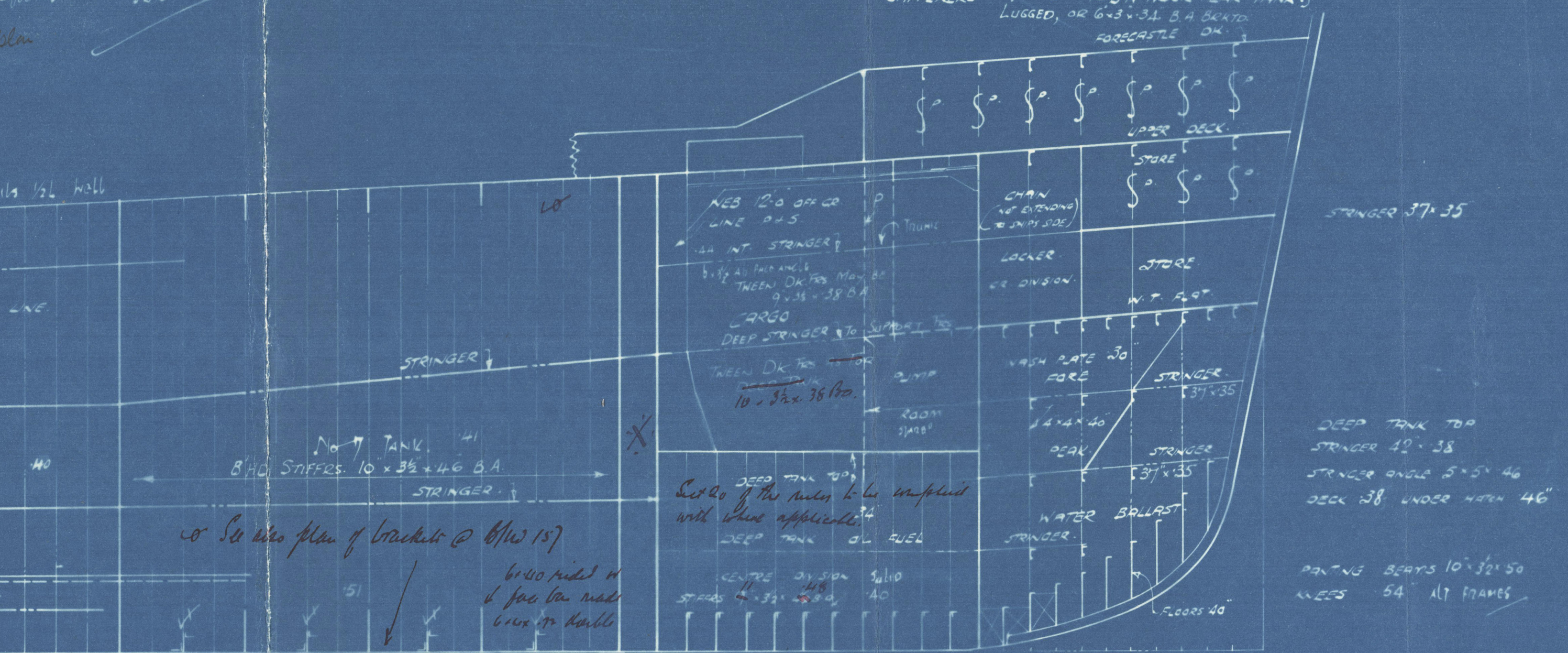
WEST IN MACHINERY SPACE
WEB PLATE 3' 3 1/2" x 36" 50
FACE PLATE 3' 3 1/2" x 36" 50
FRAME ANGLE 3' 3 1/2" x 36" 50
STIFFENERS 3' 3 1/2" x 36" 50
FACE PLATE 3' 3 1/2" x 36" 50
FRAME ANGLE 3' 3 1/2" x 36" 50
STIFFENERS 3' 3 1/2" x 36" 50



PORT BEAM BULKHEAD.
BOUNDARY BEAM 3' 3 1/2" x 36" 50
STIFFENERS 12" x 10" AT BOTTOM STANCE
STIFFENERS 11" x 3 1/2" x 36" 50 IN DEEP TANK. BULKHEAD AT 30' STANCE
STIFFENERS 3' 3 1/2" x 36" 50 IN DEEP TANK. BULKHEAD AT 30' STANCE



PORT BEAM BULKHEAD.
BOUNDARY BEAM 3' 3 1/2" x 36" 50
STIFFENERS 12" x 10" AT BOTTOM STANCE
STIFFENERS 11" x 3 1/2" x 36" 50 IN DEEP TANK. BULKHEAD AT 30' STANCE
STIFFENERS 3' 3 1/2" x 36" 50 IN DEEP TANK. BULKHEAD AT 30' STANCE



Wm Blythwood L.B. Co.

Yard No 34.

Amended Profile & Decks.

SEE ALSO PLAN OF

MIDSHIP SECTION.

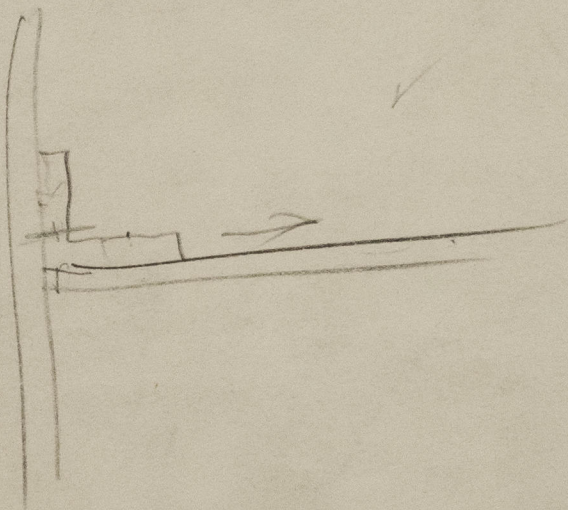
(AS BUILT).

Freeboard

GLASGOW/REPORT No. 55139

San Amado

GLASGOW REPORT No. 55339



© 2020

Lloyd's Register
Foundation

009015-009020-0001