

TWIN SCREW MOTOR VESSEL

MIDSHIP SECTION

DIMENSIONS 116'-0" O.A. x 21'-0" MLD x 9'-0" MLD DEPTH 3'-0" QUARTER DR

NO 497

SCALE 1/2" = ONE FT

DRAWING NO 2/497

Office

TO CLASS 100-A1 LLOYDS

B.P. LENGTH = 116'-0" x 98% = 113'-6" L x D = 113'-6" x 9'-0" = 1022'-4" L (B+D) = 113'-6" x (31+9) = 3340'-9" d AT ROD = 11'-0" d AT MD = 8'-0"

1/2" AT MAIN DECK 113'-6" / 9 = 12'-8" 1/2" AT R.Q.D. 113'-6" / 12 = 9'-5"

SCANTLING SHOWN ON THIS PLAN ARE PRESUMED TO BE A MINIMUM WHICH COULD BE EXCEEDED FOR THE CLASS CONTEMPLATED, IF NOT REDUCED SAME TO A MINIMUM. ANY OWNERS REQUIREMENTS TO BE ADDED LATER.

RINETING

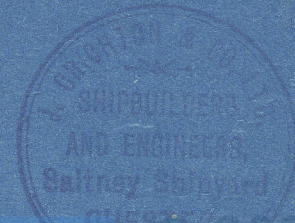
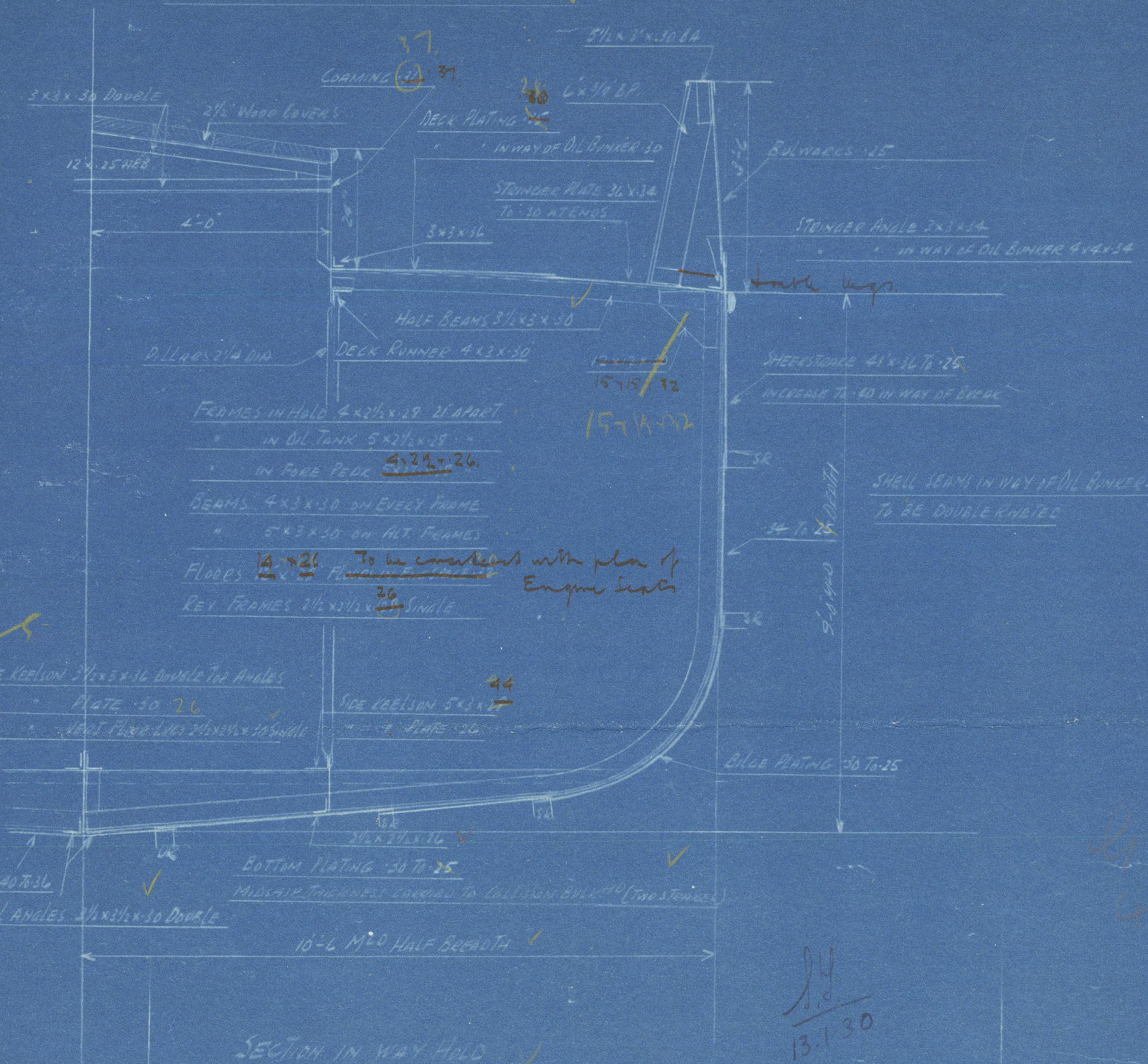
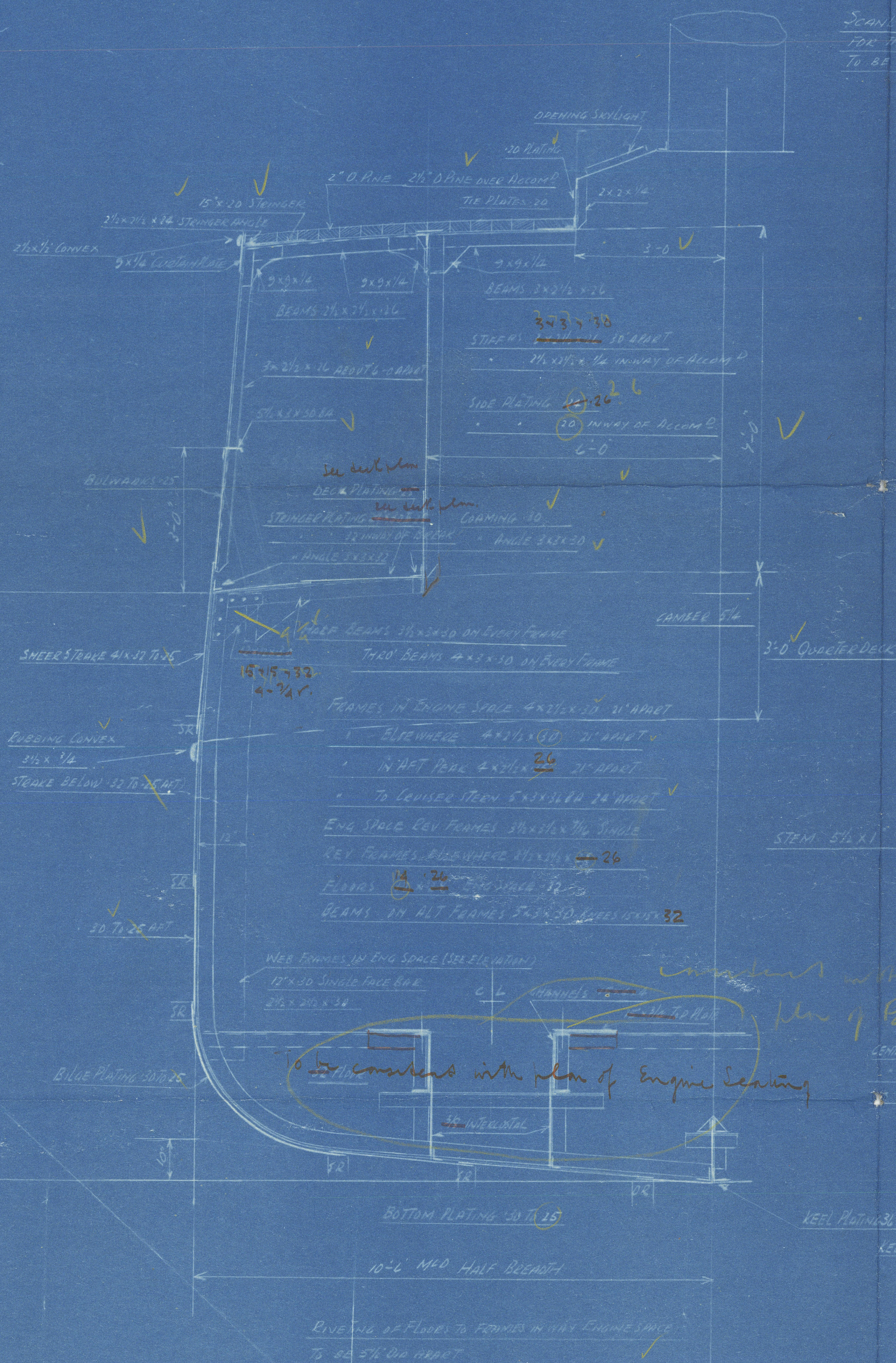
- END LAPS OF SHEERSTAKE DOUBLE ENDED F.H. ✓
- OF KEEL 75 RICH 1/4" TO DE ✓
- SHELL TO UPPER TERN OR FOREPART ✓
- FROM UPPER TERN TO LOWER TERN OR F.H. ✓
- IF STAKE BELOW OR F.H. ✓
- IF QUARTER DECK PLATING OR F.H. ✓
- OF MAIN " " OR F.H. ✓
- END LAPS OF DECK PLATING OR T.B.R. ✓

EQUIPMENT

- 2 BOWER ANCHORS EACH 2 1/2 CWT. (STOCK) ✓
- STREAM ANCHOR 1 1/4 CWT. AT STAKE ✓
- 135 FATHS 1 1/2" DIA. STOD LINK CABLE ✓
- 45 FATHS 2" STEEL WIRE (STREAM) ✓
- 75 FATHS 2 1/2" STEEL WIRE TOWLINE ✓
- 90 FATHS 4" HEMP HAWSE ✓

EQUIPMENT NUMBER

- L x (B+D) = 113'-6" x 31'-9" = 3360'-2 1/2" ✓
- R.Q.D. = 63'-15" x 3' = 191'-25" ✓
- FORECASTLE 21'-5" x 7'-5" = 112'-84" ✓
- DECK HOUSES 49'-7" x 5'-5" = 141'-50" ✓
- 381'-6" x 2" ✓



Midship Section.

J. Crichton's N°497

~~GEN. BOX N°~~

~~216~~

'Sir Charles Pitt'



© 2021

Lloyd's Register
Foundation

009050-009057-0258