

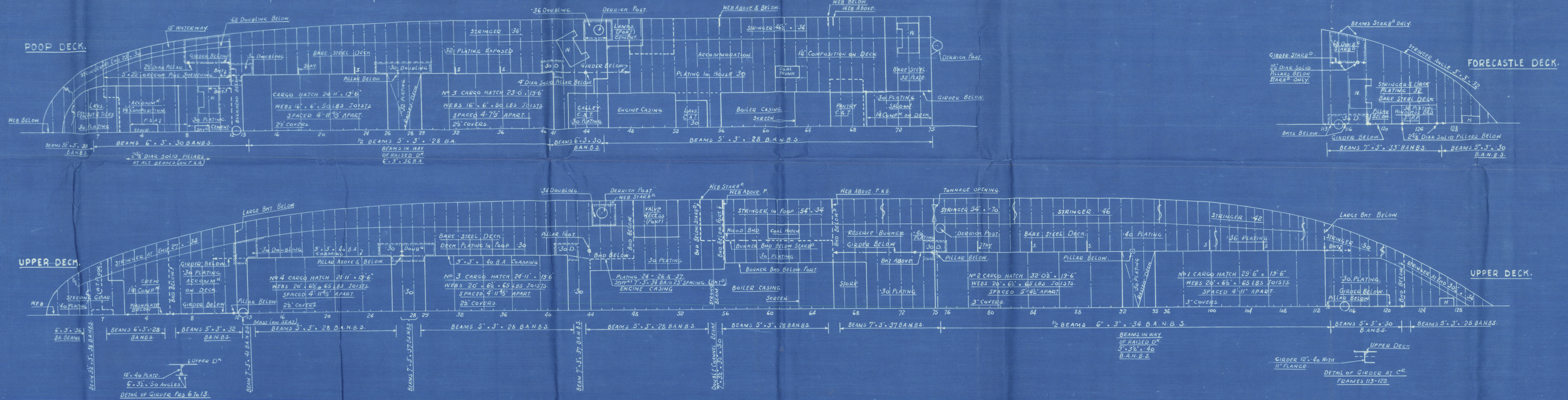
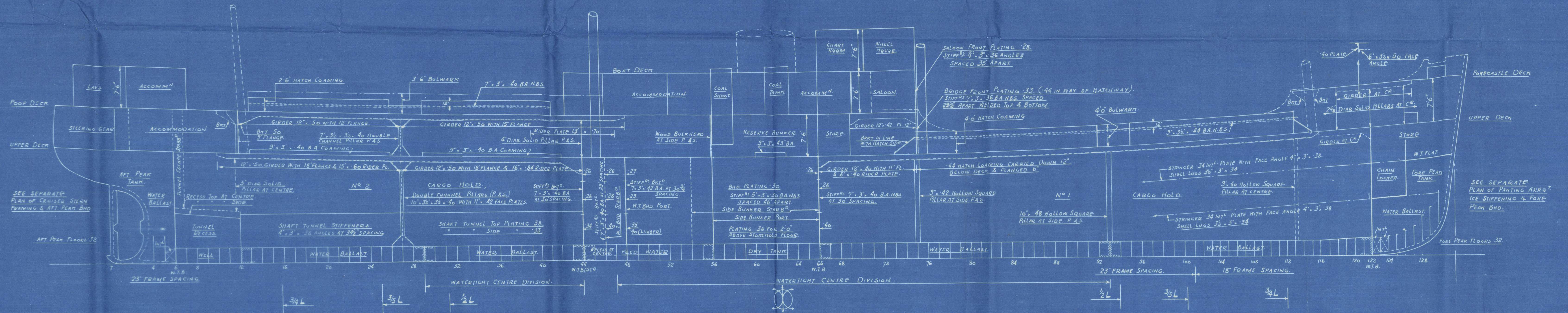
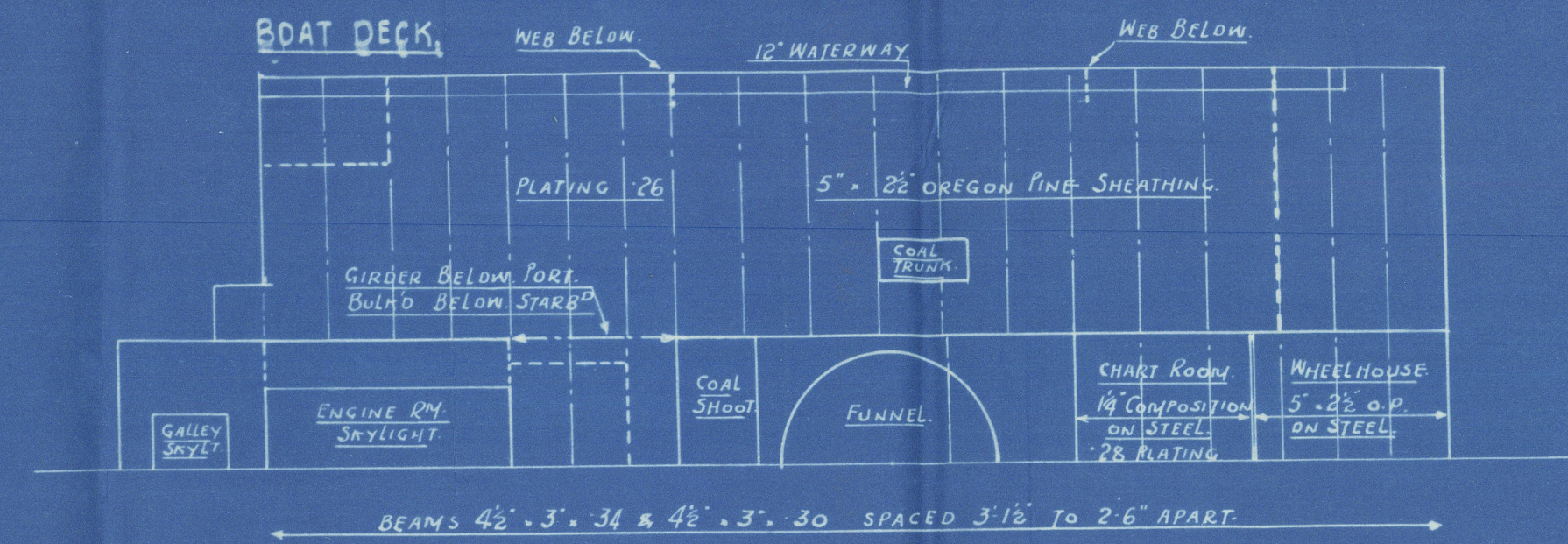
# S.S. "LIDA"

## PROFILE AND DECK PLAN.

DIMENSIONS: 240' O.R.P. x 38' 6" B.M.P. x 16' 1/2" D.M.P. TO UPPER D.K.  
TO CLASS LLOYDS \* 100AL. STRENGTHENED FOR NAVIGATION IN ICE.

SCALE: 1/8" = 1'-0"

SCANTLINGS SUITABLE FOR A MAXIMUM TIMBER DRAFT.



N<sup>o</sup> 143  
13 9 38  
LLOYD'S REGISTER  
MARITIME  
FOUNDATION



SWAN HUNTERS 1602.

S/S 'LIDA'

PROFILE + DECKS (AS FITTED)

S/S "Lida"

NEWCASTLE ON TYNE.

Report No. 96820.



© 2021

Lloyd's Register  
Foundation

009058-009066-0141