

Ex N.YK  
14.5.34

NEWCASTLE-ON-TYNE No. 81572

Index No. 32424  
(For London Office only.)

20 JUL 1927

# Lloyd's Register of Shipping.

## SURVEYS FOR FREEBOARD.-STEAM SHIPS.

PARTICULARS RELATING TO ALL STEAM SHIPS EITHER FLUSH DECKED, OR WITH  
FORECASTLES, SHORT POOPS AND BRIDGE HOUSES DISCONNECTED, OR  
TOP GALLANT FORECASTLES HAVING LONG POOPS, OR RAISED QUARTER DECKS  
WITH GALLANT FORECASTLES HAVING LONG POOPS, OR OTHERWISE.

Port of Survey **NEWCASTLE-ON-TYNE**

Date of Survey **9<sup>th</sup> July 1927**

Name of Surveyor **W. H. Brown**

Ship's Name. **T. S. MONAGAS**  
Palmer's No. 972  
Number in Register Book  
Port of Registry and Nationality. **Newcastle UK.**  
Official Number. **149439**  
Gross Tonnage.  
Date of Build. **1927**  
Particulars of Classification. **+100 A1. Carrying petroleum in bulk Contemplated**

Registered dimensions from Ship's Register.	LENGTH.	BREADTH.	DEPTH.	UNDER DECK TONNAGE.
	305.2	50.2	16.3	1890.13
Length on LOADLINE.	305	Mean Frame Depth 10 Rule " 5	No Ceiling +.20 Sheer -.60	Peak } Incl'd Tanks } deep floors in E.T.B. +26.6
CORRECTED DIMENSIONS.	305.0	49.70	15.86	1916.73

Co-efficient of fineness.....

.80

Any modification necessary [Para. 4 (a) to (e)]\*

Longitudinal framing +.01

Co-efficient as corrected .....

.81

Sheer { Stem..... 54" } 84" ÷ 2 = 42" Mean  
at { Sternpost ... 30" }

Sheer at 1/2 of the length from { Stem 6 1/2" } 13" ÷ 2 = 6 1/2" Mean  
{ Sternpost 6 1/2" }

Gradual mean Sheer ..... Plotted. 17.0

Standard mean Sheer [Table, Para. 18] ..... 40.5 Correction  
Difference..... 28.5 ÷ 4 = 5.875

§ If limited as Para. 18 (f) ..... 76.3' abaft + 5 1/4  
Sheer in level (Parallel to base) for 167'-9" is for 91'-6" forward

Rise in Sheer { At front of bridge house.....  
from amidships {  
[Para. 18 (e)] { At after end of forecastle .....

Fall in Sheer {  
Para. 18 (d) { ÷ 2 =

Length uncovered ..... Correction

### ALLOWANCE FOR DECK ERECTIONS :-

Freeboard, Table C..... 0 - 9 1/2  
Correction for Length, if required (Para. 12, 13, and 14) .....

Freeboard by Table A, corrected for sheer, and for length, if required (Para. 12, 13, and 14) } 3 - 5 1/2

Difference ..... 2 - 8

Percentage as below ..... 45.6%

Trunk I - 18.0 x 25.5 ÷ 30.0 x 8/10 = 7.34

153.0 x 30.0 ÷ 30.0 x 8/10 = 73.44

Correction for R. Q. Dk. if engine and boiler openings not covered by bridge house (Para. 11) }

Allowance for Deck Erections ..... - 1 - 2 1/2

	Length.	Length allowed.	Height.
Forecastle.....	33.43	33.30	7.3"
Bridge House.....	22.0	11.00	7.3"
Trunk including part of Raised Qr. Dk. (under bridge).....	203.0	80.78	7.3"
Poop.....	68.7	75.10	7.3"
Total .....	305	200.18	= .656

Length of Ship ..... 305

Corresponding percentage { 45.6%  
(Para. 11, 12, 13, or 14)

FREEBOARD recommended amidships from centre of Disc to top of Statutory Deck Line, (Steel) Deck :-

Fresh Water Line	above centre of Disc	...
Indian Summer Line	" " "	...
Winter Line	below " "	...
Winter North Atlantic Line	" " "	...

22 JUL 1927

If the frames, skin planking, or ceiling are of unusual thickness the breadth of vessel to inside of ceiling should be reported if possible.  
In vessels obtaining an allowance for deck erections under Para. 11 where the sheer drops abaft amidships the height of the R.Q.D. is to be taken from the level of the top of the amidship beam.  
In flush-decked vessels the total standard mean sheer means the sheer measured at the stem and sternpost. In vessels having poops and forecastles, it means the sheer measured at points distant one-eighth of the vessel's length from stem and sternpost.

Moulded Depth as measured..... 16'-6"

Addition for Keel below base line for draught record..... inches.

### CORRECTION FOR LENGTH

Length of Ship on Loadline..... 305

Length in Table ..... 198

Difference ..... 107

Correction for 10ft., Table A. .... 1.0 Table C.

× Difference divided by 10 ..... 10.7 (if required.)

If 1/10ths length covered divide by 2 5.35" + 5 1/4"

P. B. F. = .391 Trunk .381

### CORRECTION FOR IRON DECK.

Proportion covered, if less than 1/10ths length covered : 722 no wood deck

Thickness of usual wood deck, less stringer ..... 3 1/2" - 3 1/2"

### CORRECTION FOR ROUND OF BEAM.

Breadth at Gunwale amidships..... 50.0

Round of Beam ..... 12 1/2"

Normal round..... 12 1/2"

Difference ..... ÷ 2 =

Proportion of Deck uncovered (Para. 19) .....

NOTE. - The round of beam should be reported on the full breadth of vessel at the gunwale.

Freeboard, Table A .....	2 - 11 3/4
Correction for Sheer .....	+ 5 1/4
	3 - 5 1/2
Correction for Length .....	+ 5 1/4
	3 - 10 3/4
Allowance for Deck Erections .....	- 1 - 2 1/2
	2 - 8 1/4

Correction for Round of Beam.....

Correction for fall in Sheer (if any).....

Correction for Steel Deck (if required) ..... - 3 1/2

2 - 4 3/4

Additions for non-compliance with provisions of Para. 11 (d) and (e) †

Other Corrections (if any) .....

Winter Freeboard .....	2 - 4 3/4
Summer Freeboard .....	2 - 2 1/2
Indian Summer Freeboard .....	2 - 0 1/4
N. A. Winter Freeboard .....	2 - 6 3/4

Correction necessary because clearside amidships, measured in accordance with the Statute is not taken at the intersection of the wood or steel deck with side. + 1 3/4"

Winter Freeboard from deck line .....	2 - 6 1/2
Summer " " " " .....	2 - 4 1/4
Indian Summer " " " " .....	2 - 2
N. A. Winter " " " " .....	2 - 8 1/2

2 - 4

3 1/2

2 1/2

4 1/2

State dimensions of freeing port area on back of this form.

The Surveyor should state whether the fall in sheer as reported is measured relatively to the straight line of keel or to the water line. If measured relatively to water line the vessel's draft at time of survey, and also the usual load draft forward and aft should be reported.

RECEIVED 20.7.27

009067-009073-0090



*Longitudinal framing as appd.*

Do all the Frames extend to the top height in the Poop? *Yes* Raised Quarter Deck? *Yes* Bridge House? *Yes* Forecastle? *part longid. as appd.*

To what height do the Reverse Frames extend? *yes. see sketch*

Has the Poop or Raised Quarter Deck an efficient Iron Bulkhead at the fore end? *no openings*

Give particulars of the means for closing the openings in Bulkhead *no openings*

Is the Poop or Raised Quarter Deck connected with the Bridge House? *yes. by trunk* Has the Bridge House an efficient Bulkhead at the fore end? *no. open clear of trunk*

Give particulars of the means for closing the openings in Bulkhead

What is the thickness of the Bridge Front plating? *✓* and Coaming plate? *✓*

Give scantlings and spacing of the Stiffeners *✓*

Are bracket plates fitted at each end of the Stiffeners? *✓* Are hor'l. brackets fitted connecting Bridge Bulk'd. with Bulwarks? *✓*

Has the Bridge House an efficient Iron Bulkhead at the after end? *no, open clear of trunk*

How are the openings closed?

Is the Forecastle at least as high as the main or top-gallant rail? *yes. ✓* Has the Forecastle an efficient Iron or Wood Bulk'd. at after end? *see sketch.*

Are the Engine and Boiler openings covered by a Bridge, Poop, Raised Quarter Deck, or enclosed by a Strong Iron or Steel Deckhouse? *covered by poop. ✓*

If the openings are not so protected are the exposed parts of the Casings efficiently constructed?

Give thickness of plating; scantlings and spacing of Stiffeners

What is the height of the exposed Casings? Are suitable means provided for closing all openings in them in bad weather?

Are the Weather Deck Hatchways efficiently constructed and at least equal to the requirements of Section 28 of the Rules for 1904-5? Give particulars below:— *yes all steel oil tight covers as rule ✓*

Position and Size.		Ship.	Rule.	Ship.	Rule.	Ship.	Rule.	Ship.	Rule.	Ship.	Rule.
COAMING.	Item.										
	Height above top of <i>trunk</i>	<i>9"</i>									
	Thickness { Sides.....	<i>9 1/2" x 40"</i>									
	Ends.....	<i>BA</i>									
SHIFTING BEAMS OR WEB PLATES.	Number .....										
	Section and Scantlings .....										
	Material .....										
* FORE AND AFTERS.	Number .....										
	Section and Scantlings .....										
	Material .....										
HATCHES Thickness .....		<i>30 plate</i>									
Remarks.....		<i>3 F&amp;A stiffeners at 5'3" x 40 angles 1" 6'6" x 40 "</i>									

\* The depth of Fore and Afters should be stated from the underside of the hatches in all cases.

(If the sill of the lowest side scuttle will be less than 6 inches above the Indian Summer Load Line if assigned under the tables, state vertical distance from top of deck at side amidships to lower edge of lowest side scuttle.)

The following information is to be given in all Cases of vessels dealt with under Paras. 11, 12 (under 15 feet Moulded depth) and under Shelter Deck Rules.

What is the thickness of the Bridge Sheerstrake? *Strake between Main and Bridge Sheerstrakes?*

Delete the words *The Crew are, are not, berthed in the bridge house.*  
that do not apply *The arrangements to enable them to get backwards and forwards from their quarters are, are not satisfactory.*

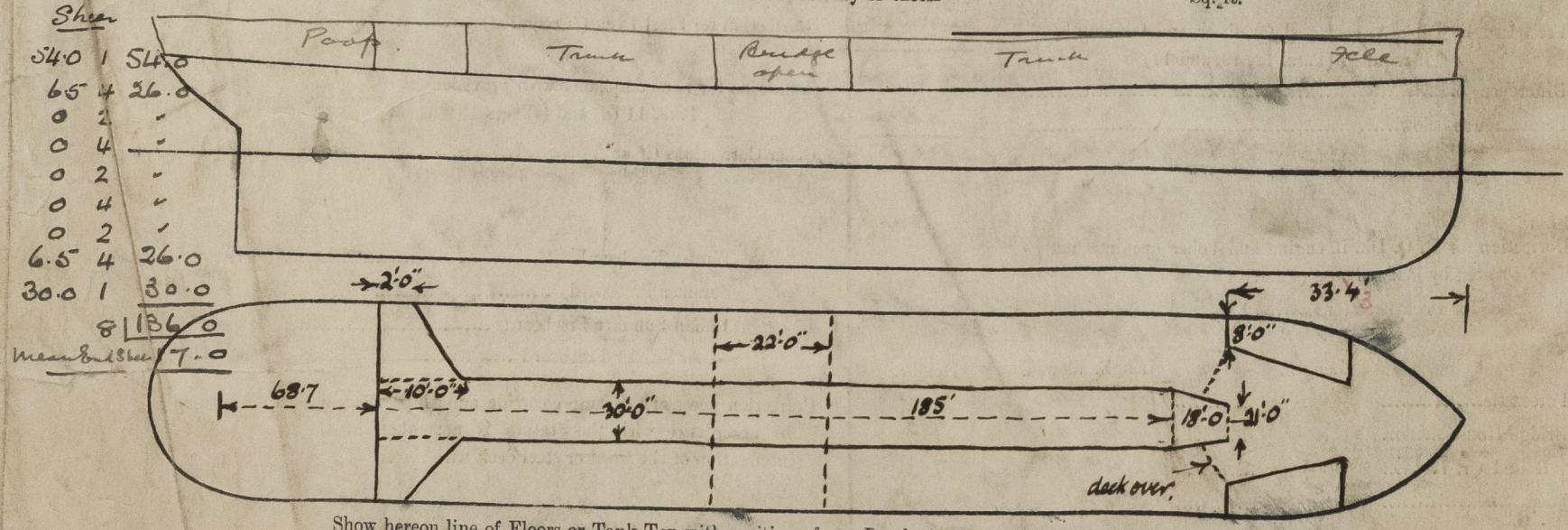
Length of Bulwarks in well

Area of Freeing Ports required by Para. 11 (e) each side of vessel = *Sq. ft.*

*open rails*

Ft.	Tenths.	Ft.	Tenths.	No.	} Freeing Ports (each side of vessel).	= <i>Sq. ft.</i>
x	x	x	x			
x	x	x	x			

Total deficiency or excess = *Sq. ft.*



Show hereon line of Floors or Tank Top with position of any Breaks in same; also height of Peak Tank tops, &c., &c.

State any special features in the construction of the Vessel

Builder's name and yard number *Palmers Co' No 972*

Names of sister vessels *Vessel is a repeat of 'BOLIVAR' Report No 81454.*

Owners *Palmers S.B. & Co Ltd - for voyage out; Final owners Venezuelan Gulf oil*

Address

Approx Fee £ *7 : 6 : 8* Received by me

