

T. S. S. HAKOZAKI MARU.

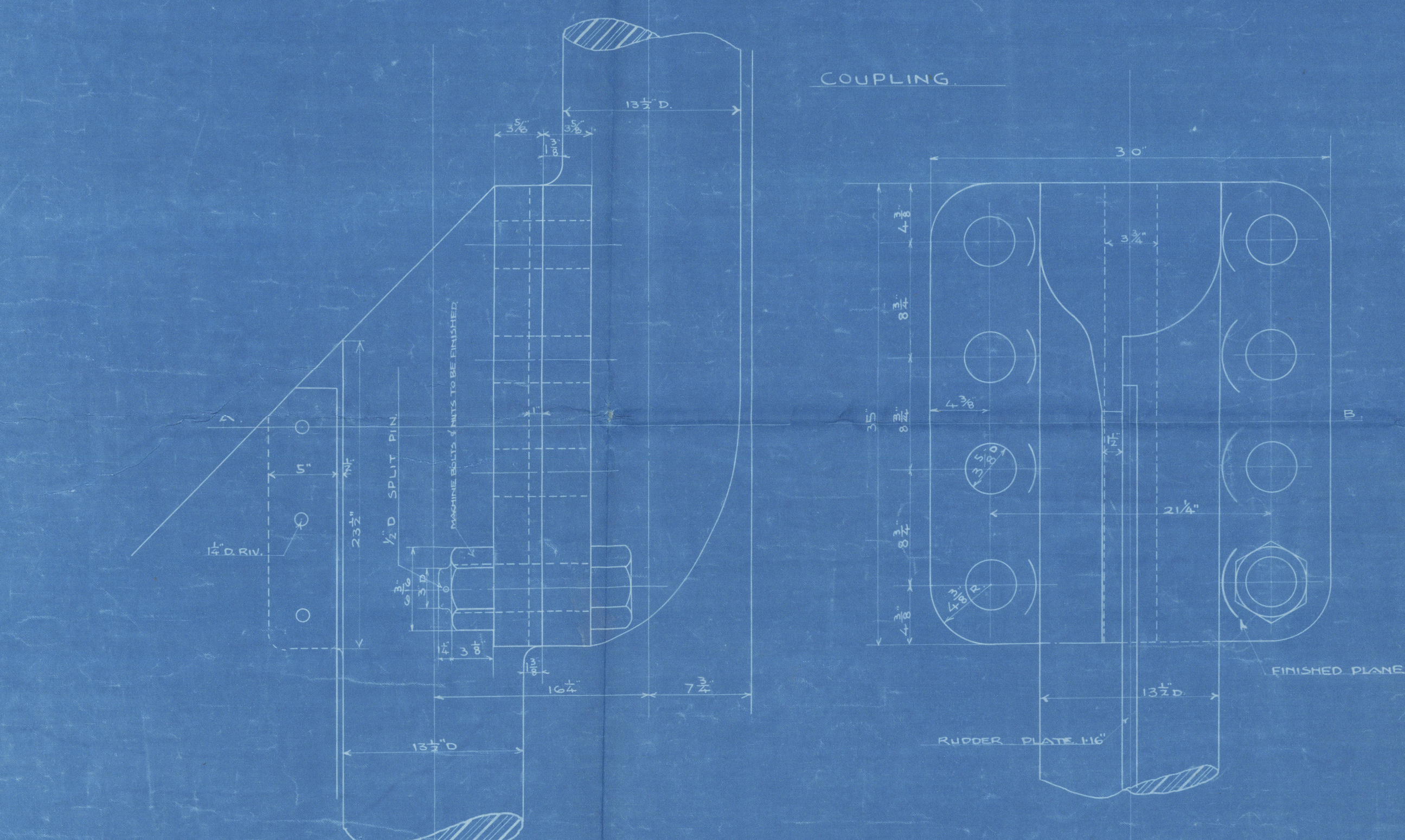
RUDDER.

SCALE $\frac{1}{2}$ INCH TO ONE FOOT.

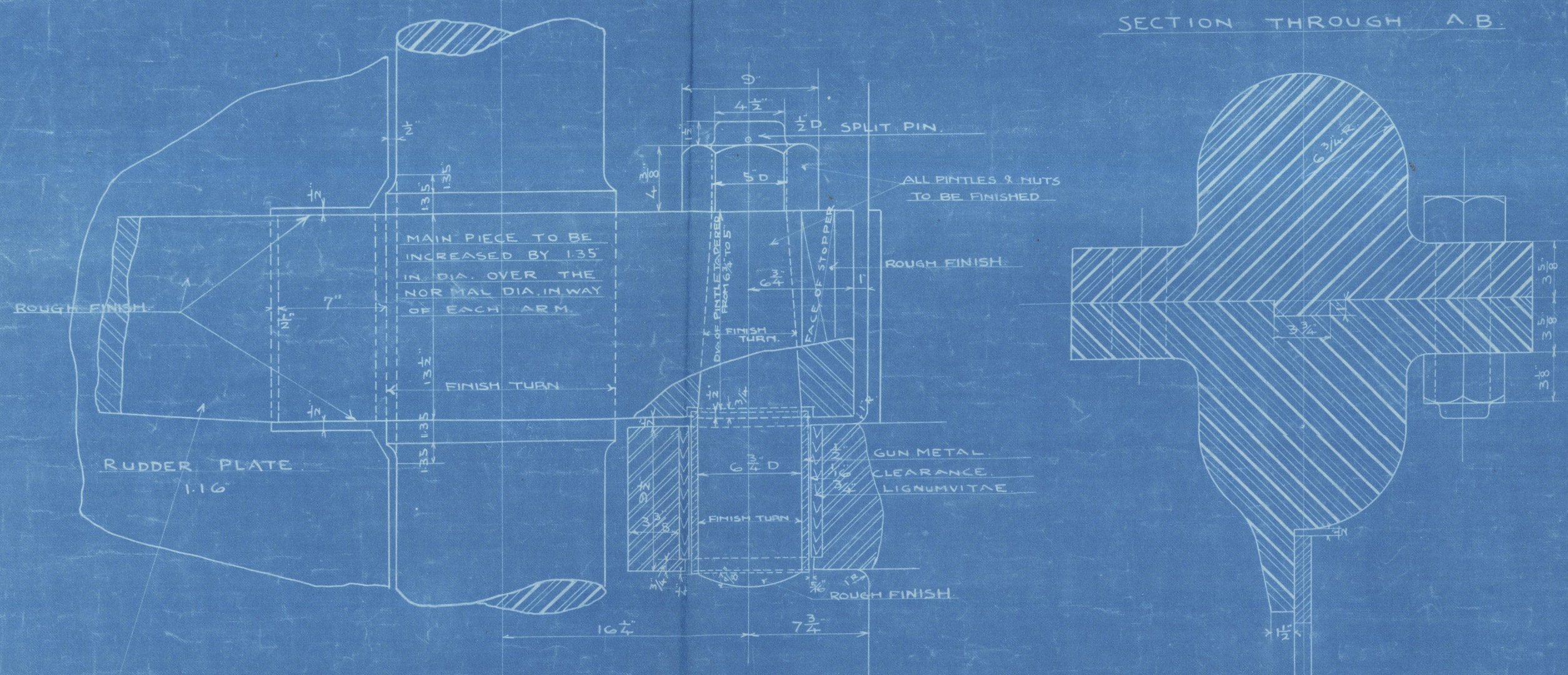
DETAILS $\frac{1}{2}$ INCH TO ONE FOOT.

DETAILS

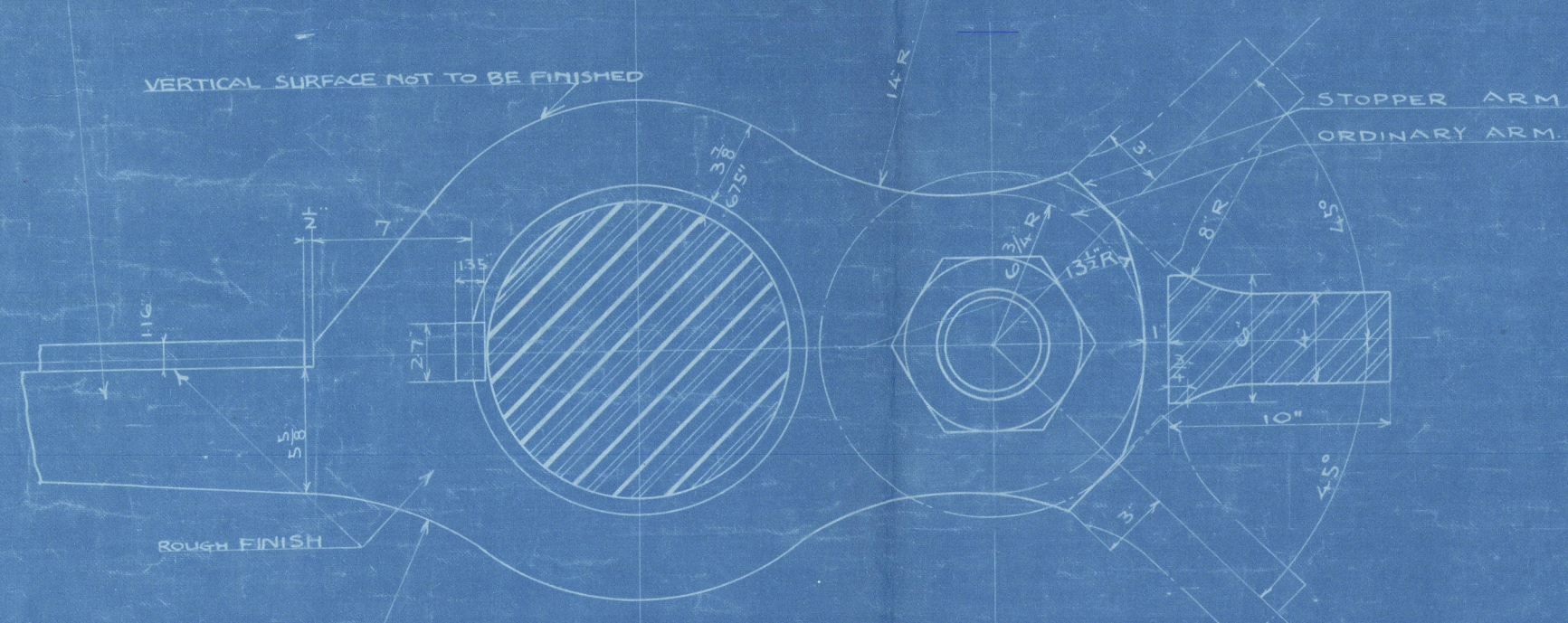
SCALE $\frac{1}{2}$ TO ONE FOOT



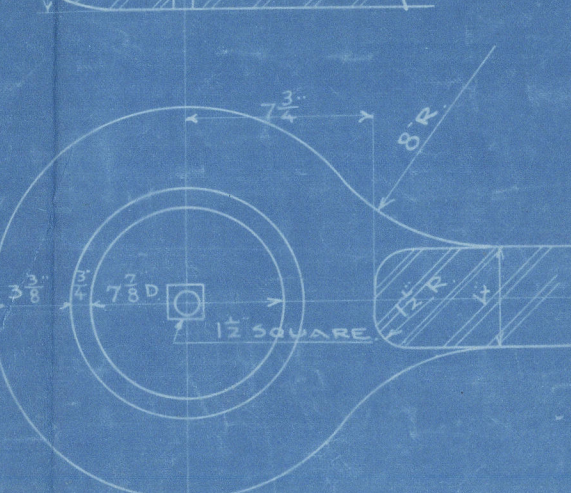
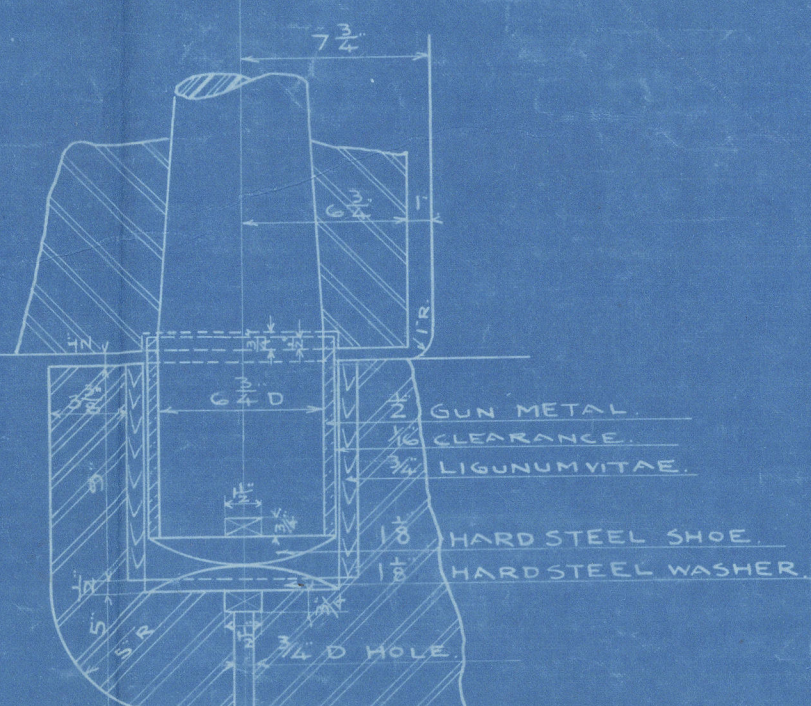
STOPPER ARM



RUDDER ARM TAPERED FROM $13 1/2 \times 2 1/2$ AT WELDLINE TO $8 \times 1 1/2$ AT POINT

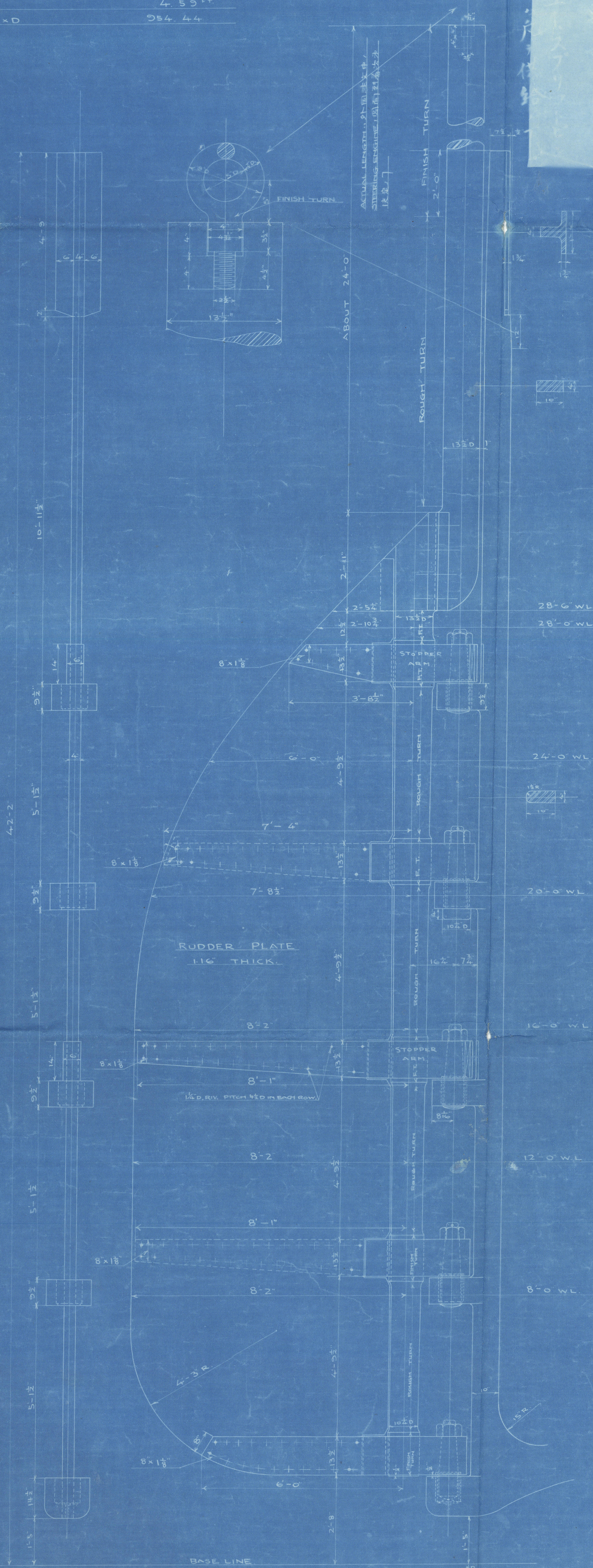


HEEL BRACE

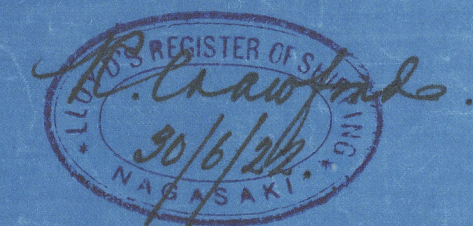


RUDDER STOCK PINTLES: FORGED STEEL
RUDDER ARMS: CAST

SCANTLING NUMBER.
FOR SEA SPEED NOT EXCEEDING 14 KNOTS.
A (TOTAL AREA) 207.94 SQ. FT.
D 4.55 FT.
A x D 954.44



WEIGHTS:-
RUDDER STOCK 6.37 TONS (ABOUT)
MAIN PIECE 5.81 " "
5-ARMS 5.59 " "
17.77 TONS.



ZOSEN KAISHA
NAGASAKI WORKS
SHIP DESIGNER'S OFFICE 'A'
DRAWN BY
CHECKED BY
APPROVED BY
DESIGNER'S OFFICE NO.
DATE JUN. 9, 1922

V. L. L. L.
8. 7. 20



© 2021
Lloyd's Register
Foundation

Rudder,

No. 34 8.

Nitubishi Zosen Kaisha

Yagasaki, Report No. 1364

"Hakozaki Maru"



© 2021

Lloyd's Register
Foundation

009116-009121-0149