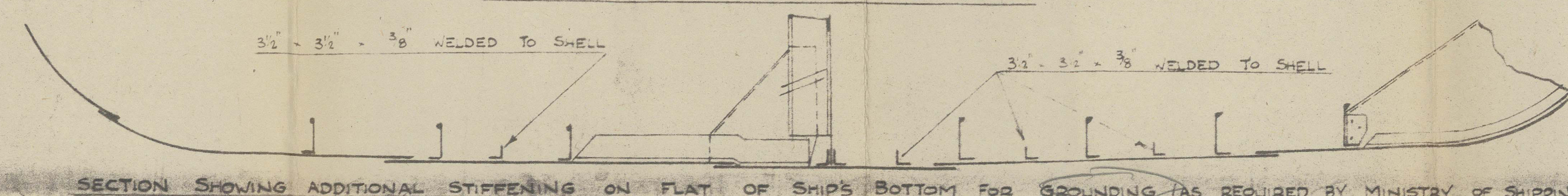
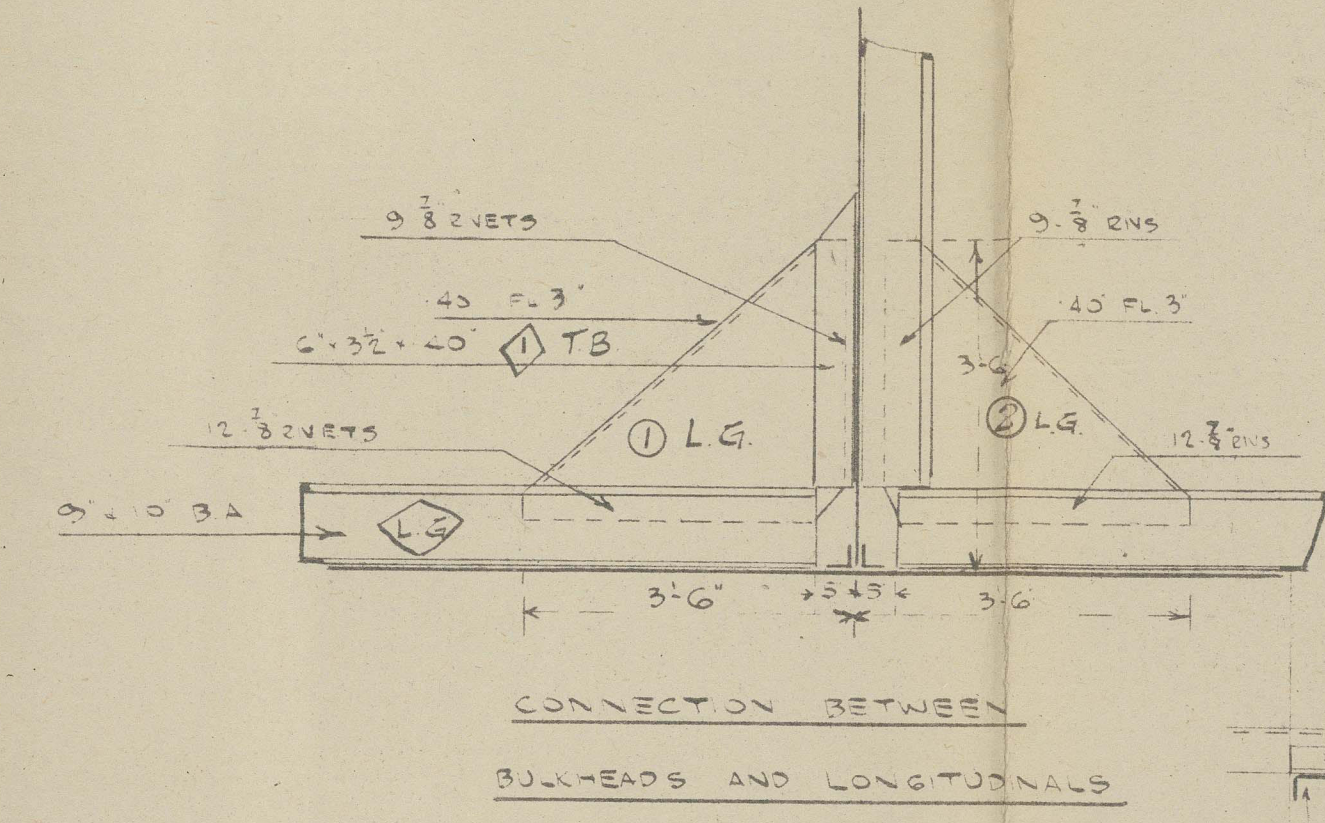
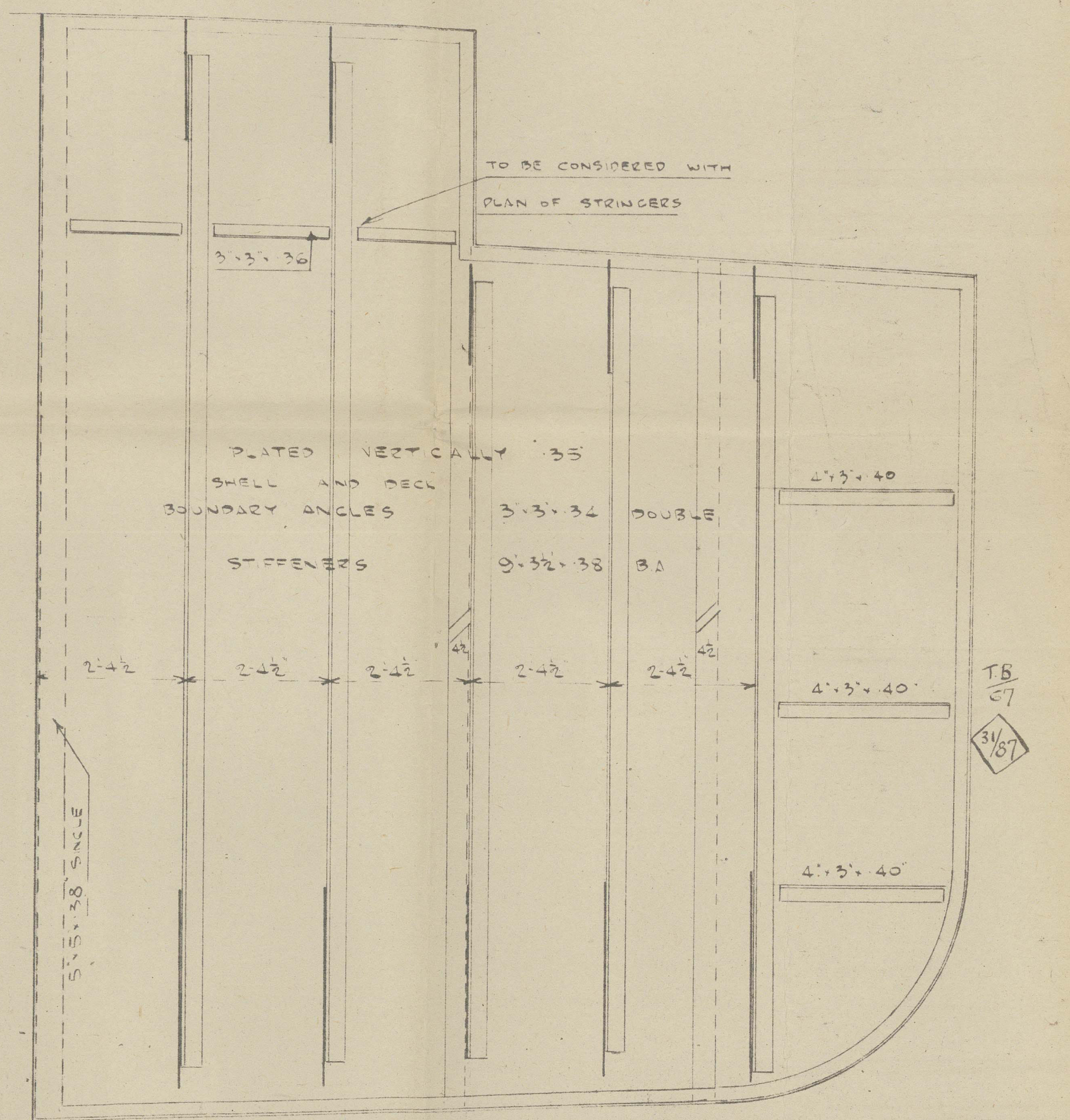
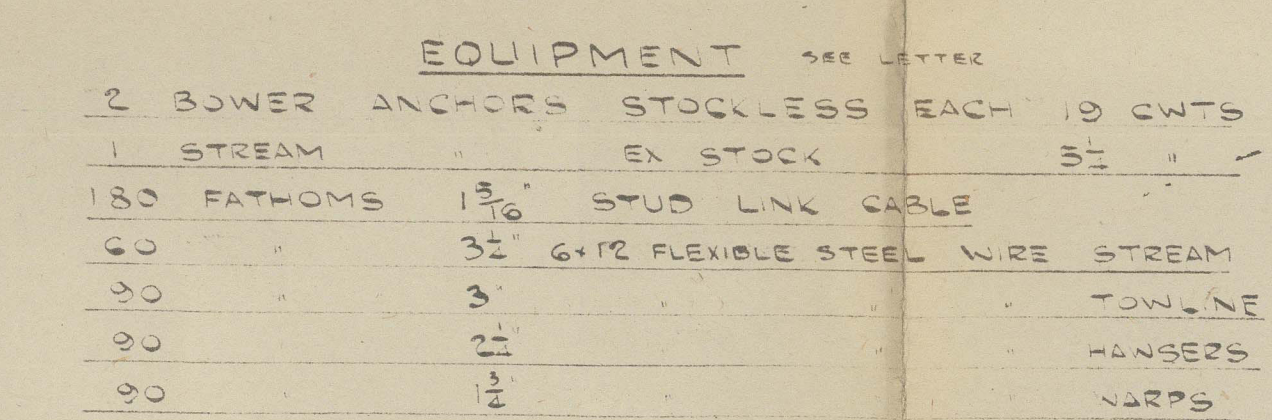


LONGITUDINAL FRAMING AT BOTTOM & AT DECK

MODIFIED AS AMENDED BY LLOYD 23-10-40



(15)

Blythswood S. B. Co. Ld.

67 Empire Broom

Midship Section (as built)

GLASGOW REPORT No. 64862



© 2021

Lloyd's Register
Foundation

009222-009231-0171