

30.7.31

SHIP NR. 51 & 52. STERNPOST AND RUDDER.

STERNFRAME OF CAST STEEL
RUDDERHEAD OF FORGED STEEL
RUDDER OF CAST STEEL
PINTLES OF STEEL WITH METAL BUSHES
SPEED OF VESSEL 12 KNOTS

A x D = 375

Rule
DIAM. OF MAINPIECE $14\epsilon + 10\% (3\epsilon\epsilon) = 160.6^{mm}$
MAINPIECE INCREASED TO 180^{mm} (i.e. $12\frac{1}{2}\%$ above L.R. Rule for the)
STERNFRAME AND RUDDER INCREASED 25% ABOVE THE RULES
LLOYDS CERTIFIKAT TO BE DELIVERED.

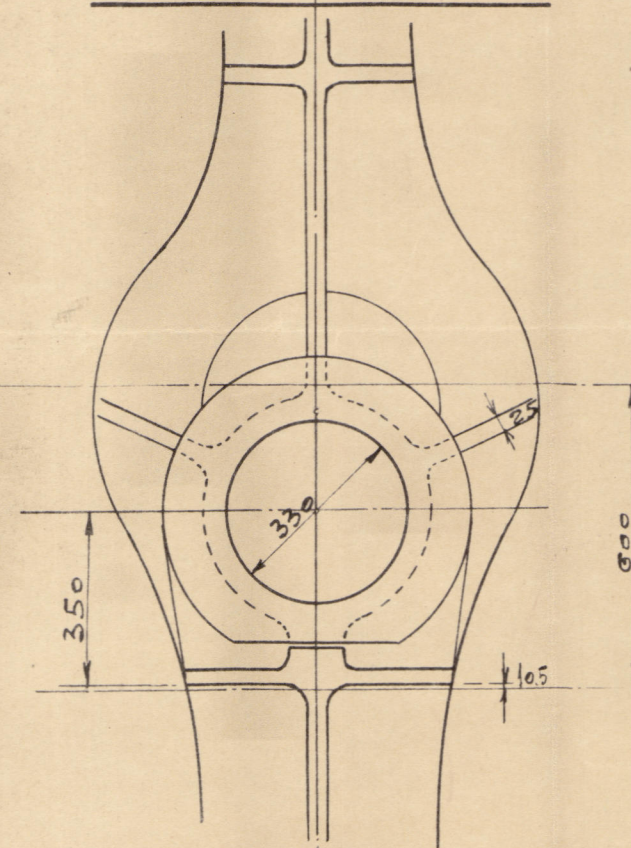
FITTED COUPLING BOLTS

G OFF 5/16" BOLTS.

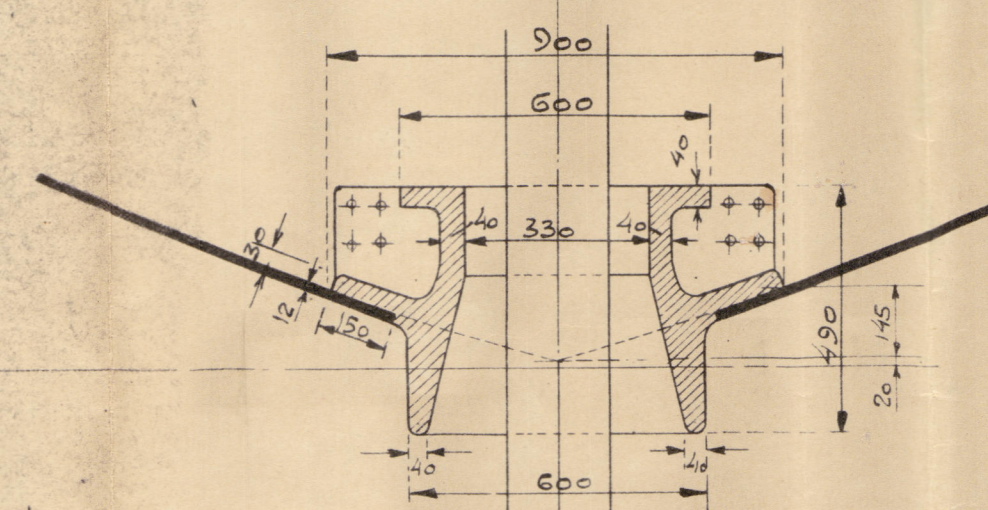
57

Plan of bruser stem to be submitted

STERNFRAME IN WAY OF RUDDERHEAD
SEEN FROM ABOVE.



SECTION THROUGH CENTRE OF RUDDERHEAD



GUDGEON.

SCARP OF RUDDERHEAD

G OFF 5/16" FITTED BOLTS.

57

IN WAY OF RUDDERHEAD. KONTURSTRECKUNGSLINIE
SEEN FROM BELOW.

SEEN FROM BELOW.

GUN METAL
MINIMUM VITAE BUSH

RUDDERPLATE 9.5" H.
22" H. RIV. SPACED 110" H.
HAKES TO BE DRILLED ONLY ON ONE SIDE OF
RUDDERFRAME

FOOT GUDGEON

BASIS LINE

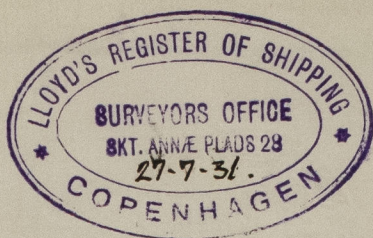
GUN METAL

MINIMUM VITAE BUSH

BYGN. NR 51 & 52.
STERNPOST & RUDDER.

1:15 & 1:15 25-7-31

W.P.
30.7.31



Sternpost & Rudder

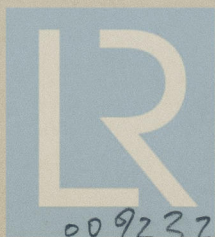
Nakskov Yard

N^o 51 & 52

S.S. "Slask"

s/s. "Gieszyn" of Gdynia

Copr. Rpt. No. 8722.



© 2020

Lloyd's Register
Foundation

009232-009234-0053