

T.S.M.V. "DOLORES DE URQUIZA"

Nº 725^P

MIDSHIP SECTION

SCALE: 1/2 INCH = 1 FOOT



To CLASS AT LLOYDS, 100, A.I.

EQUIPMENT

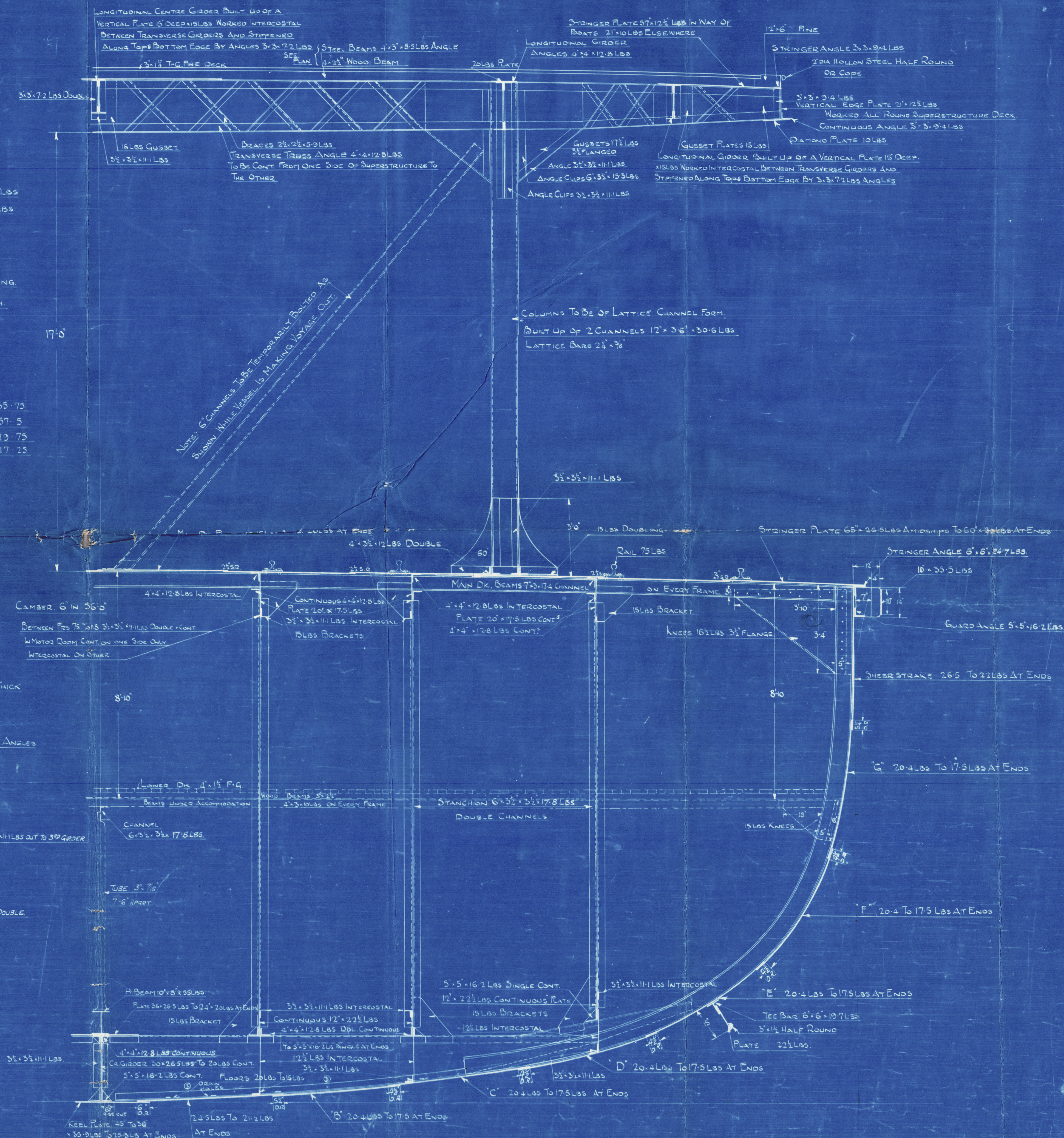
- 2 - PATENT ANCHORS STOCKLESS EACH 4300 LBS
- 1 KEDGE ANCHOR 1100 LBS
- 270 FATHOMS 1 1/8" STUO LINK CHAIN
- 2 - 30 " 6" MANILA ROPES
- 2 - 30 " 5" " "
- 1 - 50 " 2" " " FOR TOWING SPRING
- 4 - 6" MANILA MOORING LINES 25 FATHOMS EACH
- 30 FATHOMS 3/4" STEEL WIRE HANDBER

LLOYDS NUMERALS

L	335'-3"	335.75
B	57'-6"	57.5
D	13'-3"	13.75
d	17'-3"	17.25
L x D	335.75 x 13.75	= 6631
L x (B+D)	335.75 x 77.25	= 25936
B		= 17.0

SCANTLING

- STEM: TO BE A STEEL CASTING
- STERN POST 3" x 4" RUDDER STOCK 8" DIA. RUDDER PLATE 1" THICK
- BULKHEADS BOTTOM PLATING 15 LBS REMAINDER 12 1/2 LBS
- STIFFENERS SEE BULKHEAD PLAN
- DIAGONAL BRACES ON LONGITUDINAL GIRDERS 5" x 4" x 1/4" LBS ANGLES
- ONE ROW ON EACH SIDE
- MAIN FRAMES 8" x 3 1/2" x 20 LBS BULB ANGLE
- SPACED 2' APART THROUGHOUT
- BOTTOM FRAMES 3 1/2" x 3 1/2" x 11 LBS
- REVERSE FRAMES 3 1/2" x 3 1/2" x 11 LBS FOR 1/2 LAMIDSHIPS. BEYOND 1/2 LAMIDSHIPS OUT TO 3" GRIDER
- CENTRE GIRDER 30" x 26 LBS TO 20 LBS AT ENDS
- FLOORS 30" DEEP x 20 LBS TO 15 LBS AT ENDS
- WEB FRAMES 18" x 16 1/2 LBS TO 15 LBS AT ENDS
- DOUBLE FACE ANGLES 3 1/2" x 3 1/2" x 11 LBS. WEB FRAME BAR 3 1/2" x 3 1/2" x 11 LBS DOUBLE
- DOUBLE REVERSE IN ENGINE ROOM 3 1/2" x 3 1/2" x 11 LBS ACROSS FLOORS



DOLORES DE URQUIZA

Nº 725 P.

A + J. Ingho Rte

Midship Section

Vessel as Buñó

Dolores de Urquiza

GLASGOW REPORT No 46022

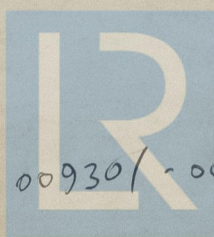
1.5.57.

Mr. "Delfina Mitre."

GLASGOW REPORT No 46022.

~~866 Carmine Avellaneda~~

~~GLASGOW REPORT No 46046~~



© 2021

009301-009310-0158

Lloyd's Register
Foundation