

# • N<sup>o</sup> 256 • STERNPOST & RUDDER

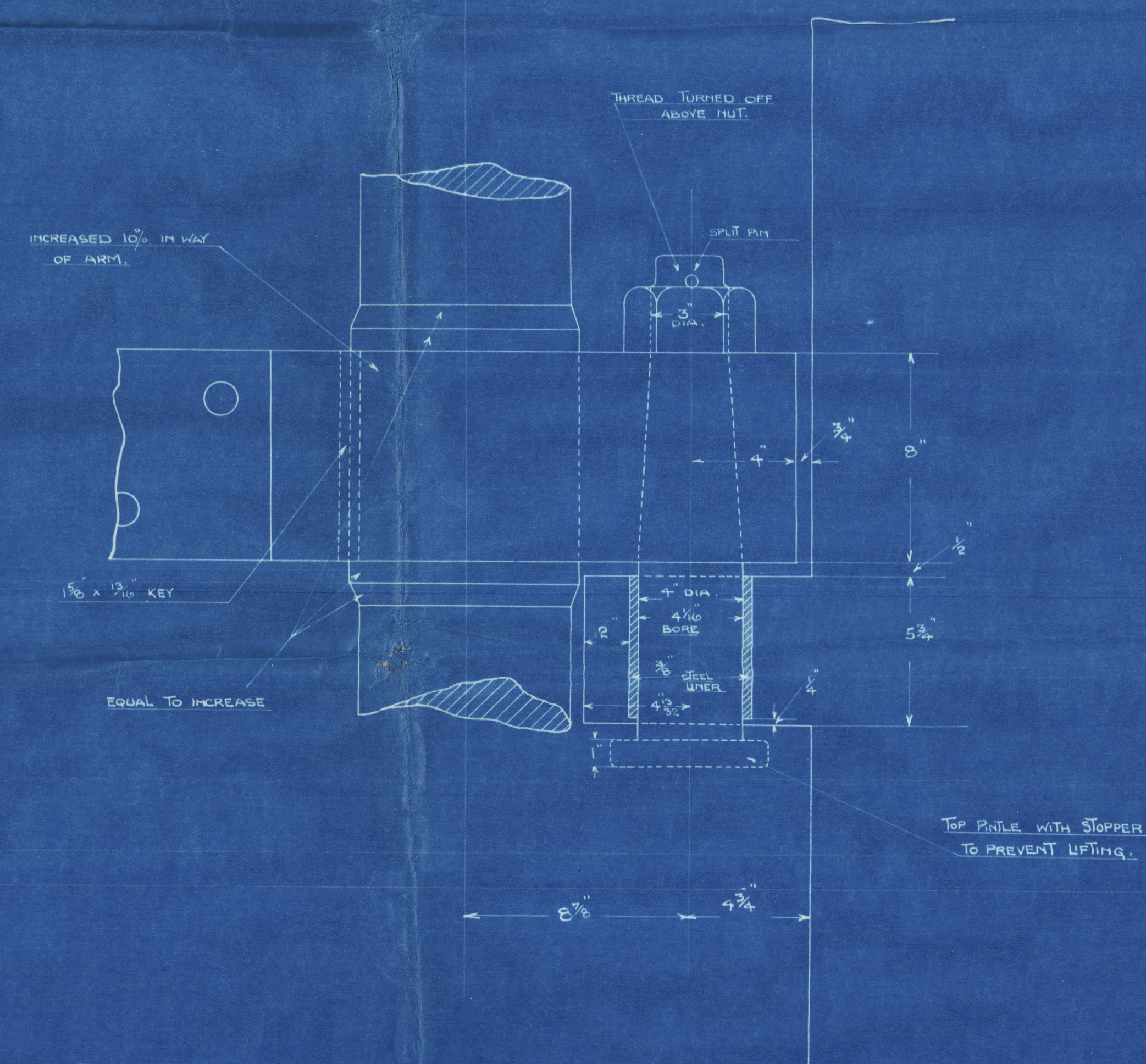
Scale  $\frac{3}{4}$ " = 1 foot  
DETAILS AS MARKED

"LLOYDS 100 A-1 SPECIAL SURVEY"  
LLOYDS LONG<sup>t</sup> N<sup>o</sup> 20325

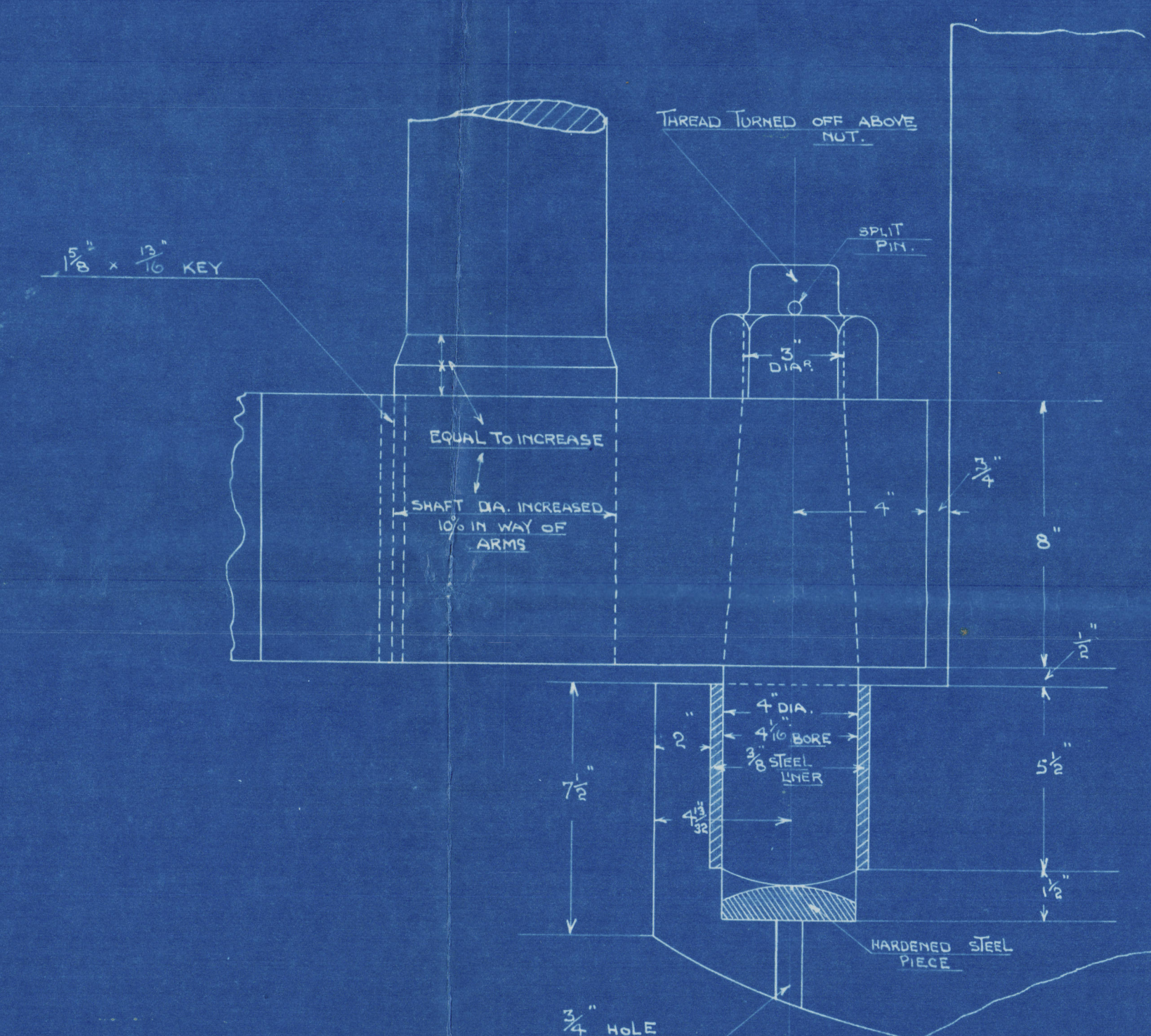
STERNFRAME, RUDDER POST, RUDDER ARMS TO BE OF  
BEST FORGED IRON.  
RUDDER ARMS SHRUNK ON & KEYED TO STOCK.

$A \times D = 101.29 \times 3.1 = 314$   
SPEED OF SHIP UNDER 10 KNOTS.

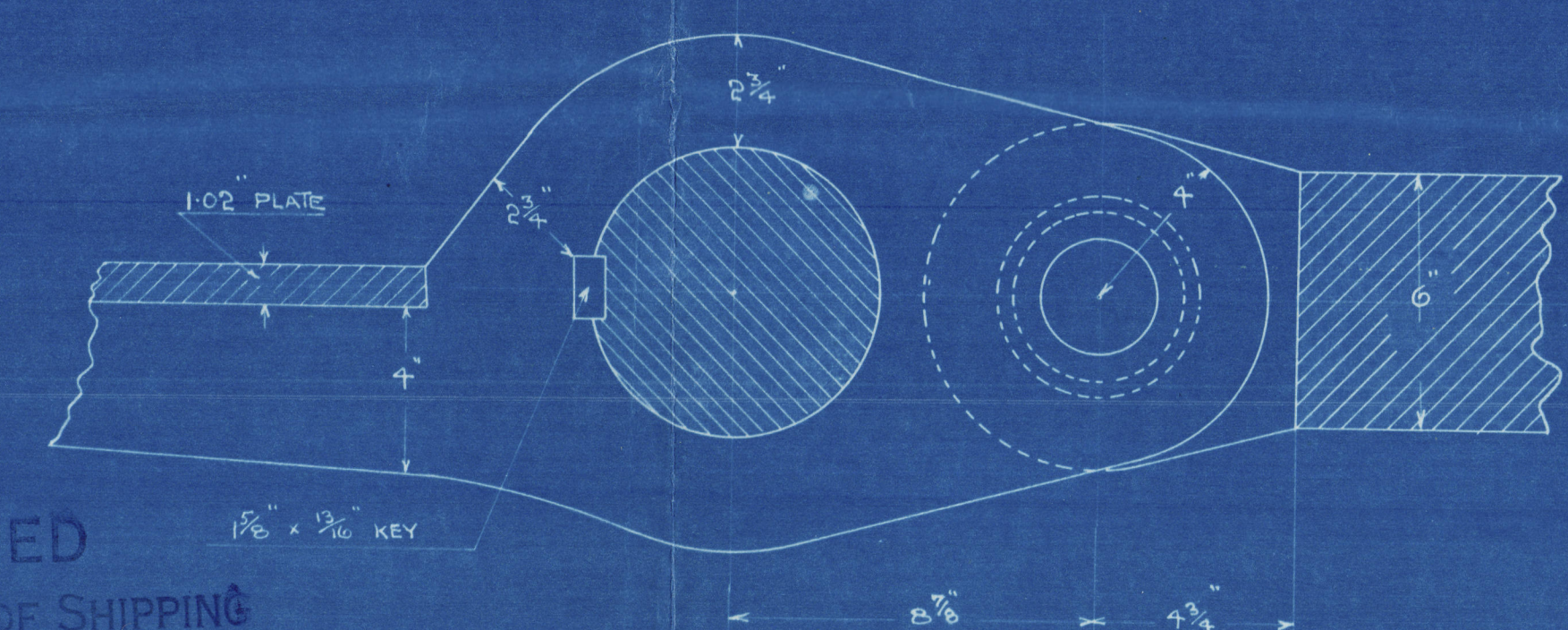
FERGUSON BROS.  
(PORT-GLASGOW) LT<sup>D</sup>  
SHIPBUILDERS & ENGINEERS.



DETAIL OF PINTLE & GUDGEON.  
Scale  $\frac{3}{4}$ " = 1 foot.



DETAIL OF BOTTOM PINTLE & GUDGEON.  
Scale  $\frac{3}{4}$ " = 1 foot.



APPROVED  
LLOYDS REGISTER OF SHIPPING  
1914

DRAWING N<sup>o</sup> 7  
DATE 15 Aug. 1914



# • N<sup>o</sup> 256 • STERNPOST & RUDDER

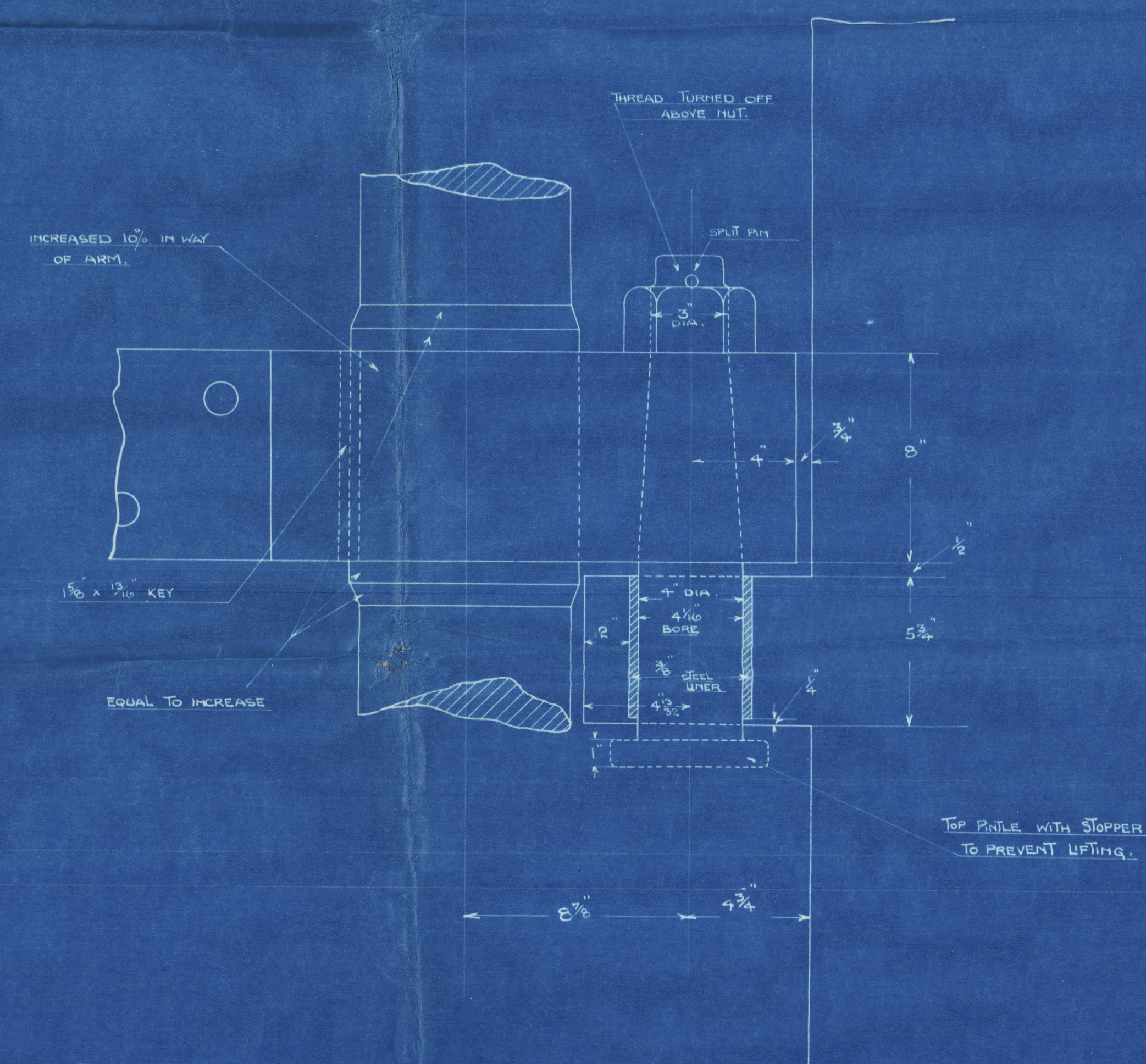
Scale  $\frac{3}{4}$ " = 1 foot  
DETAILS AS MARKED

"LLOYDS 100 A-1 SPECIAL SURVEY"  
LLOYDS LONG<sup>t</sup> N<sup>o</sup> 20325

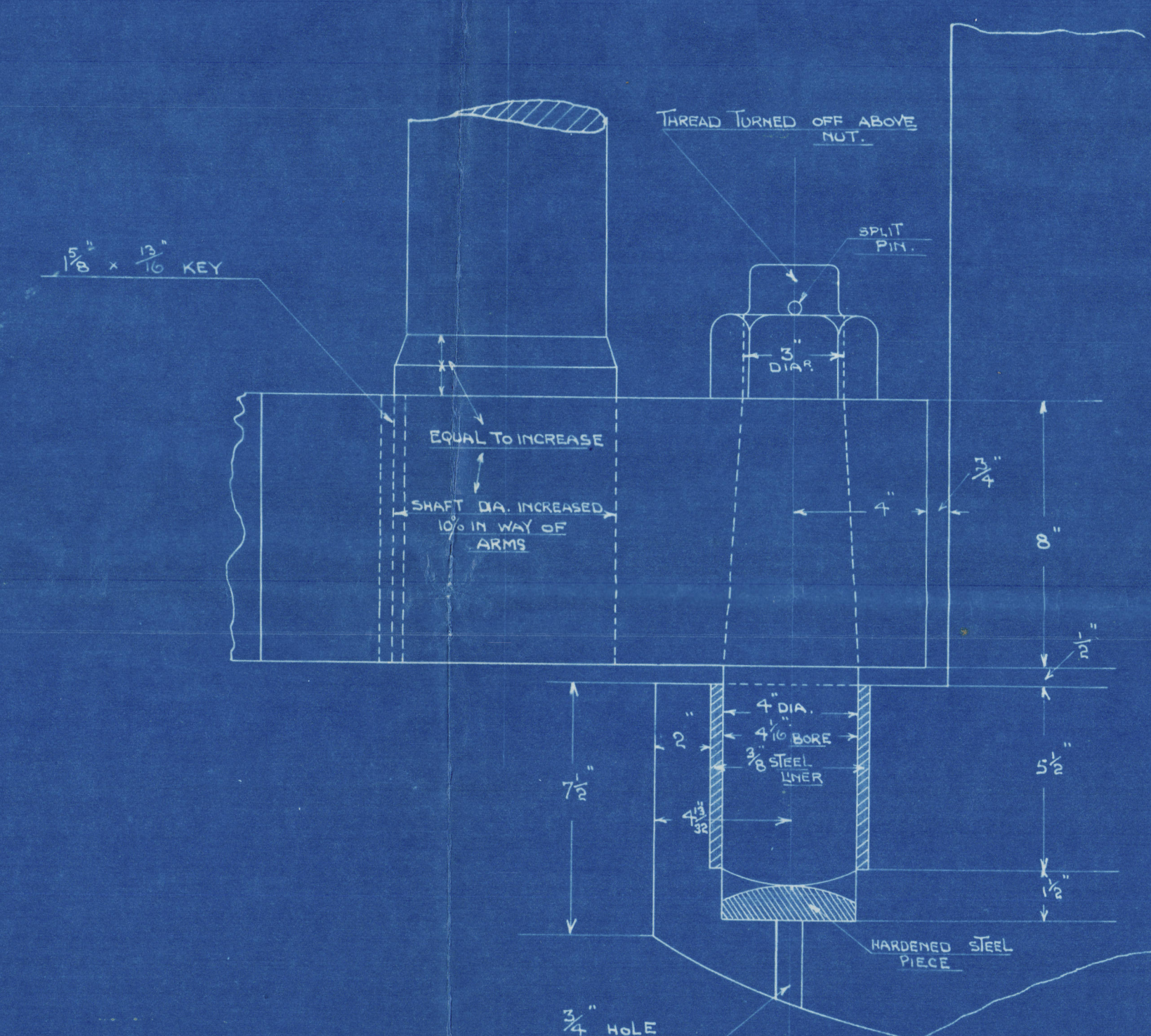
STERNFRAME, RUDDER POST, RUDDER ARMS TO BE OF  
BEST FORGED IRON.  
RUDDER ARMS SHRUNK ON & KEYED TO STOCK.

$A \times D = 101.29 \times 3.1 = 314$   
SPEED OF SHIP UNDER 10 KNOTS.

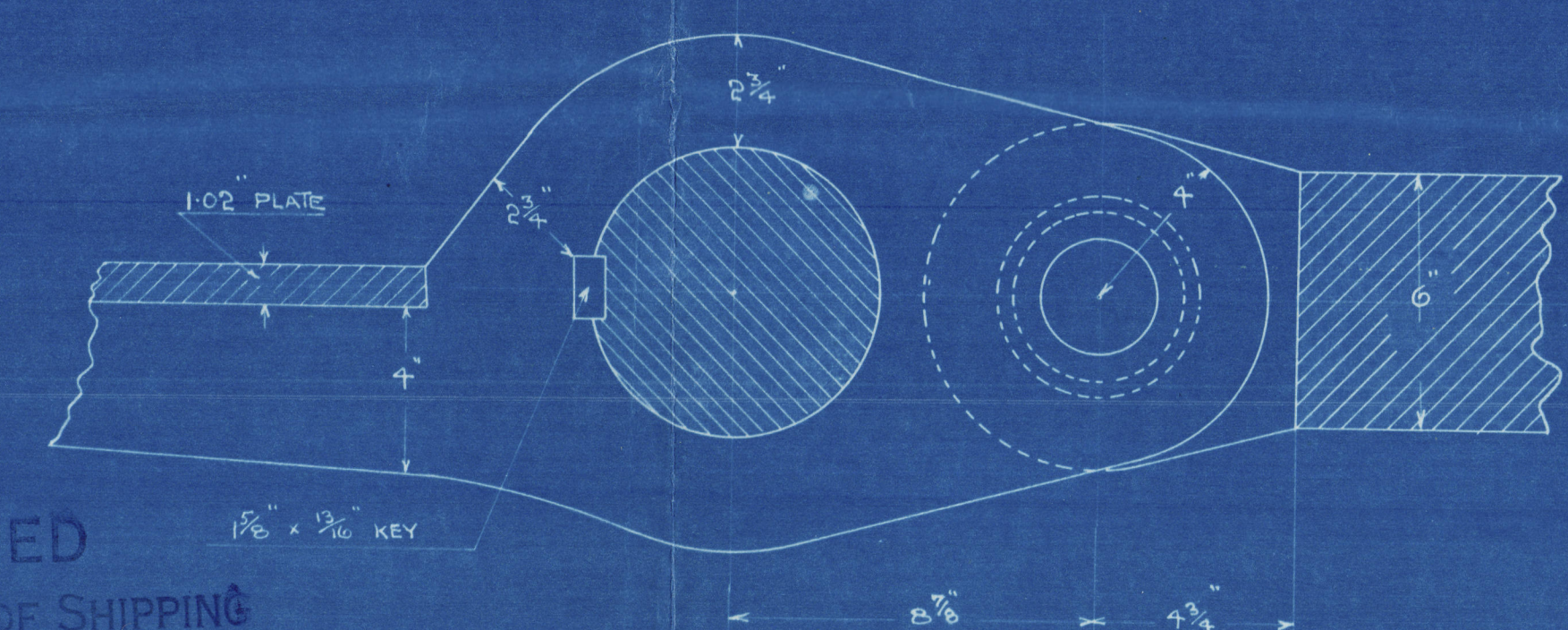
FERGUSON BROS.  
(PORT-GLASGOW) LT<sup>D</sup>  
SHIPBUILDERS & ENGINEERS.



DETAIL OF PINTLE & GUDGEON.  
Scale  $\frac{3}{4}$ " = 1 foot.



DETAIL OF BOTTOM PINTLE & GUDGEON.  
Scale  $\frac{3}{4}$ " = 1 foot.



APPROVED  
LLOYDS REGISTER OF SHIPPING  
M. S. P. 1914

DRAWING N<sup>o</sup> 7  
DATE 15 Aug. 1914



Messrs Ferguson Bros & Co

No 256.

Sternpost & Rudder.

S. S. "Ellen Stub"

Greenock Rep No 17739

r/n "Jaigano."

ex

"Okhta"



© 2020

Lloyd's Register  
Foundation

009451-009458-0231